

Spare parts list

Trowel

STG 36



General information

This spare parts list applies to the following:

Part number	Description
4812 0550 01	Trowel STG 36

Use only authorized parts. Any damage or malfunction caused by the use of unauthorized parts is not covered by Warranty or Product Liability. Any unauthorized use or copying of the contents or any part thereof is prohibited. This applies in particular to trademarks, model denominations, part numbers, and drawings.

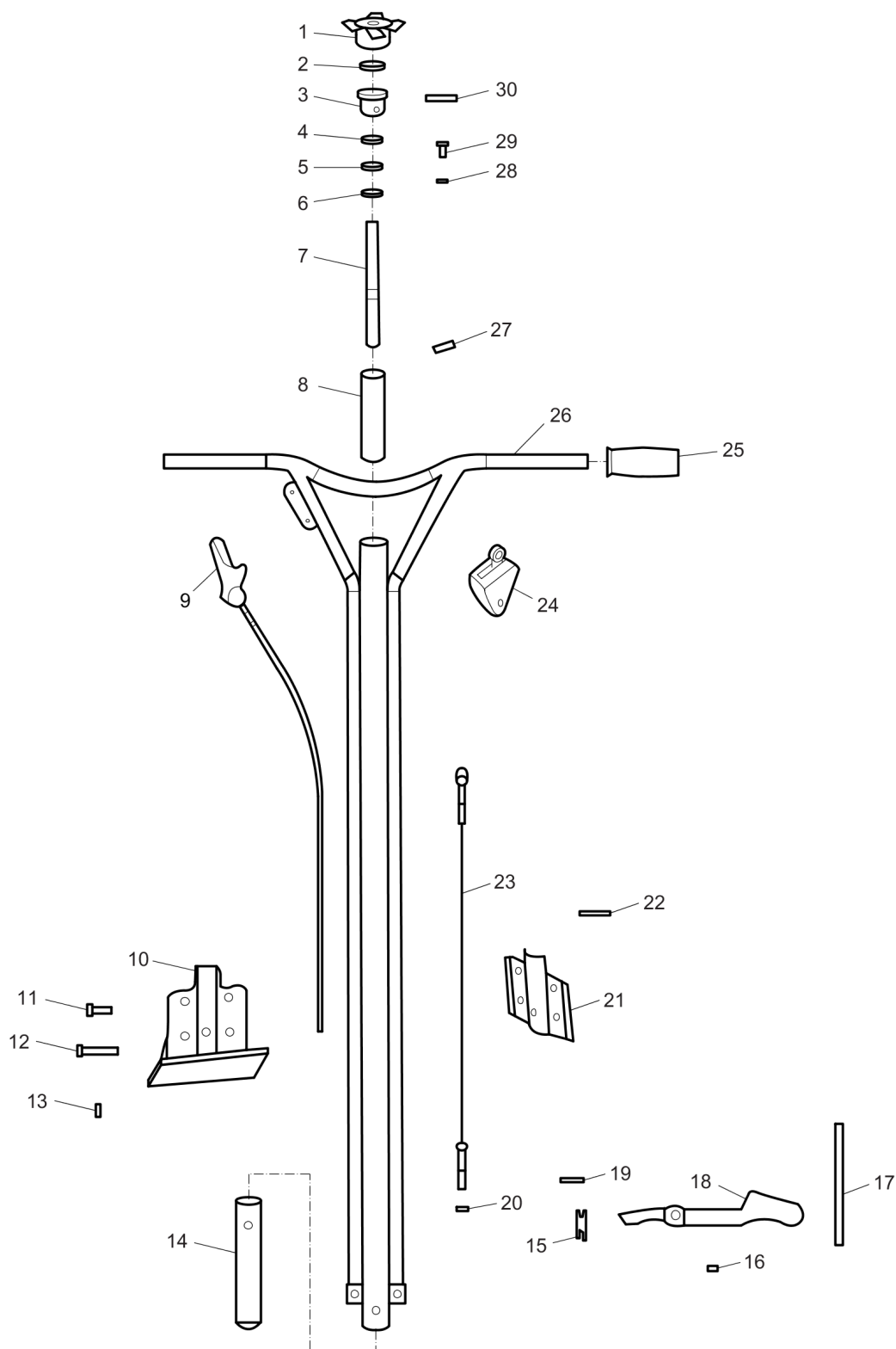
Instructions for use

This spare parts list contains no safety regulations and is merely intended to assist in the ordering of spare parts. For information about operating, servicing, or repairing, the relevant Safety and operating instructions must be consulted at all costs. Please observe the safety instructions listed in the relevant Safety and operating instructions!

Contents

Mechanical components

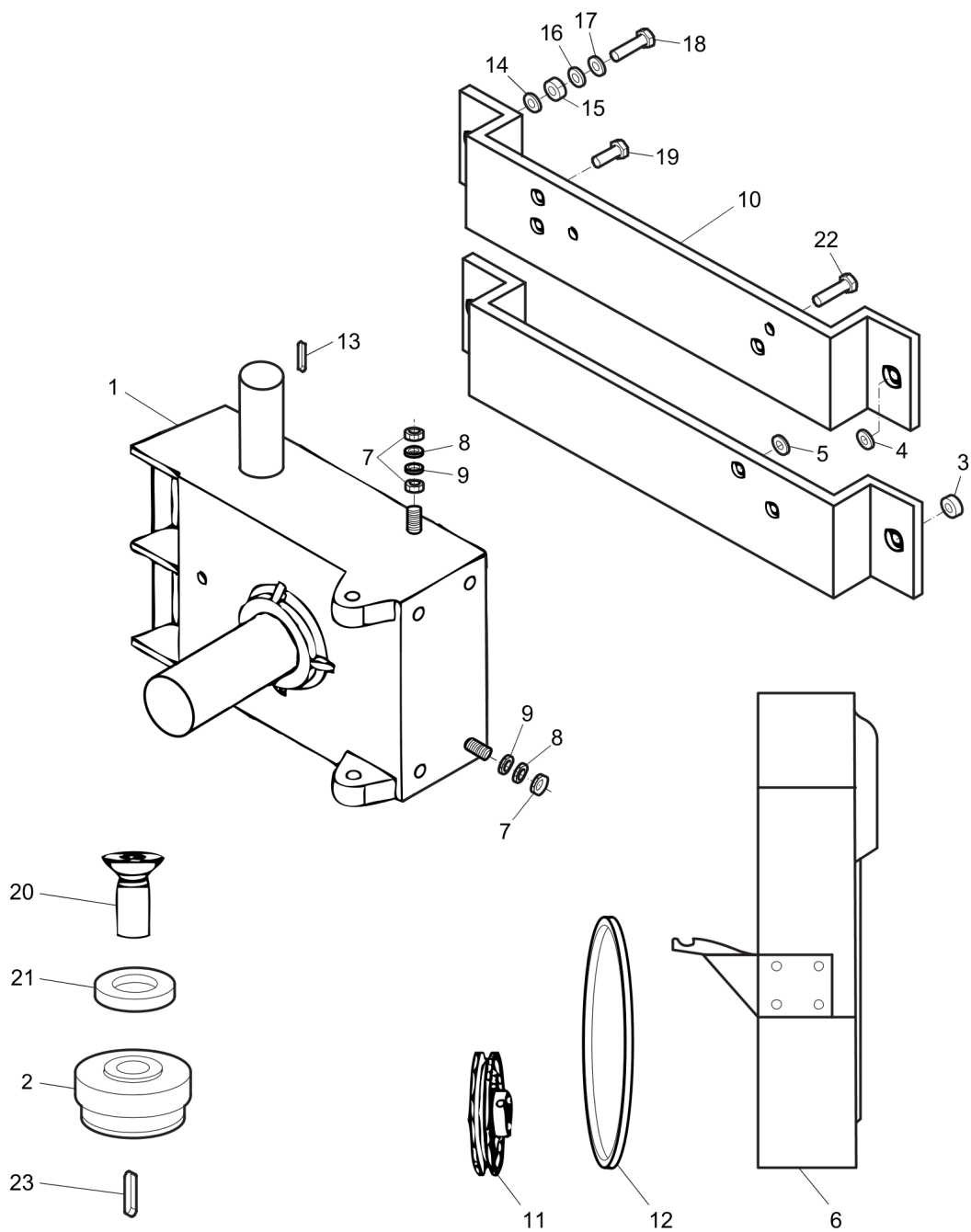
Frame	4
Gearbox & clutch	6
Blade assembly	8

Mechanical components Frame

Refer to Parts Online for the most up to date information. The printed information might be outdated.

Fri Apr 11 11:15:35 UTC 2014

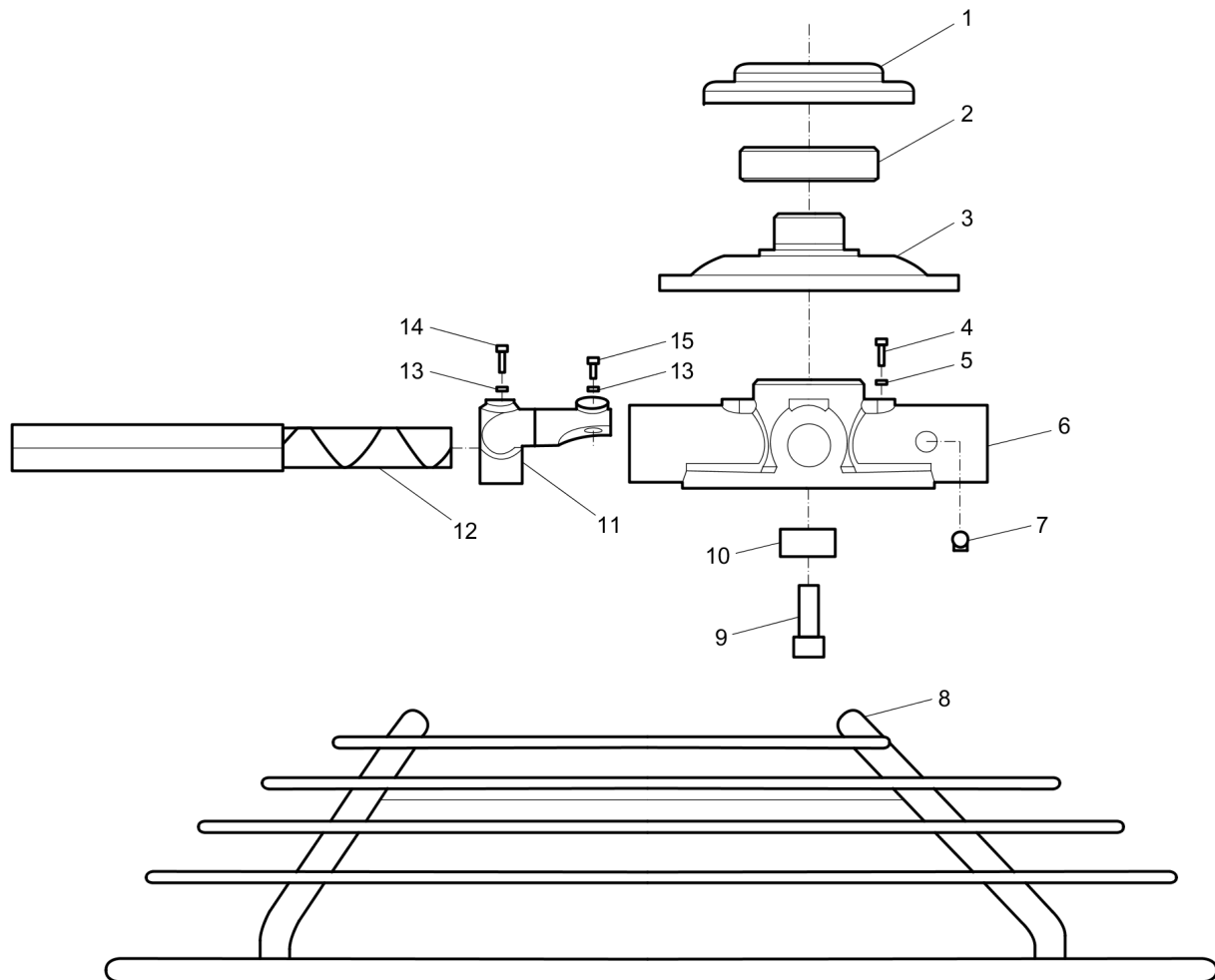
Item	Part Number	Name	Qty	L
1	4700369763	Knob	1	
2	4700369773	Bearing	1	
3	4700369764	Bushing	1	
4	-	Washer	1	
5	4700369766	Washer	1	
6	-	Washer	1	
7	4700369765	Adjust shaft	1	
8	4700369767	Adjust shaft bushing	1	
9	4700369684	Throttle control, complete	1	
10	4700369757	Lower joint plate	1	
11	-	Screw, M10 x 30 mm DIN933	4	
12	-	Screw, M10 x 60 mm DIN931	1	
13	-	Nut, M10 DIN985	5	
14	4700369771	Bushing	1	
15	4700369768	Throttle wire wheel	1	
16	4700369781	Retainer ring	1	
17	4700369769	Yoke arm shaft	1	
18	4700369770	Yoke arm	1	
19	4700369778	Pin	1	
20	-	Nut, M10 DIN985	1	
21	4700369756	Upper joint plate	1	
22	4700369777	Pin	1	
23	4700369772	Wire	1	
24	4700369755	Safety switch, complete	1	
25	4700369780	Handle	2	
26	4700369762	Frame	1	
27	-	Screw	1	
28	4700369704	Pin	1	
29	-	Screw	1	
30	4700369698	Pin	1	

Mechanical components Gearbox & clutch

Refer to Parts Online for the most up to date information. The printed information might be outdated.

Fri Apr 11 11:15:38 UTC 2014

Item	Part Number	Name	Qty	L
1	4700369788	Gearbox, complete	1	
2	4700369814	Clutch, complete	1	
3	-	Washer	4	
4	-	Washer	4	
5	-	Washer	4	
6	4812055122	Belt cover	1	
7	-	Nut, M10 DIN 934	6	
8	-	Washer, M10 DIN 125	5	
9	-	Spring washer, M10 DIN 127	5	
10	-	Engine plate	2	
11	4812055120	Pulley	1	
12	4812055121	Drive belt	1	
13	-	Key	1	
14	-	Washer	4	
15	-	Nut	8	
16	-	Washer	8	
17	-	Washer	8	
18	-	Screw	4	
19	-	Screw	6	
20	4700369813	Lock screw	2	
21	-	Bearing	1	
22	-	Screw	4	
23	4700369811	Key	1	

Mechanical components Blade assembly

Item	Part Number	Name	Qty	L
1	4700369791	Pressure plate cover	1	
2	4700369793	Bearing	1	
3	4700369792	Pressure plate	1	
4	-	Screw	4	
5	-	Spring washer	4	
6	4700369796	Blade holder	1	
7	4700369805	Oil cap	4	
8	4700369822	Guard ring	1	
9	-	Bolt	1	
10	4700369804	Bushing	1	
11	4700369802	Angle arm	4	
12	4700369801	Trowel arm	4	
13	-	Nut	8	
14	-	Screw	4	
15	-	Screw	4	

