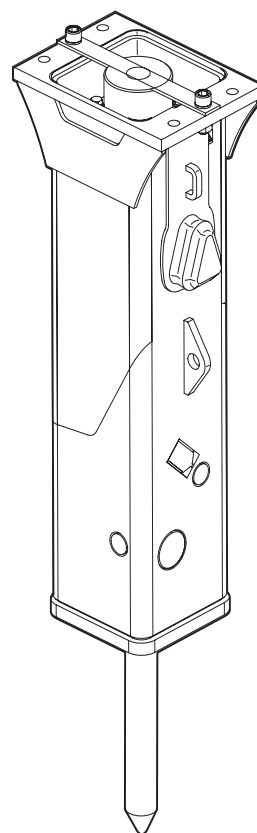


Spare parts list

Hydraulic breakers

RX 8 - II



General information

This spare parts list applies to the following:

Part number	Description
8460050068	RX 8 - II

Use only authorized parts. Any damage or malfunction caused by the use of unauthorized parts is not covered by Warranty or Product Liability. Any unauthorized use or copying of the contents or any part thereof is prohibited. This applies in particular to trademarks, model denominations, part numbers, and drawings.

Instructions for use

This spare parts list contains no safety regulations and is merely intended to assist in the ordering of spare parts.

For information about operating, servicing, or repairing, the relevant Safety and operating instructions must be consulted at all costs.

Please observe the safety instructions listed in the relevant Safety and operating instructions!

Contents

Service, repair and wear part kits

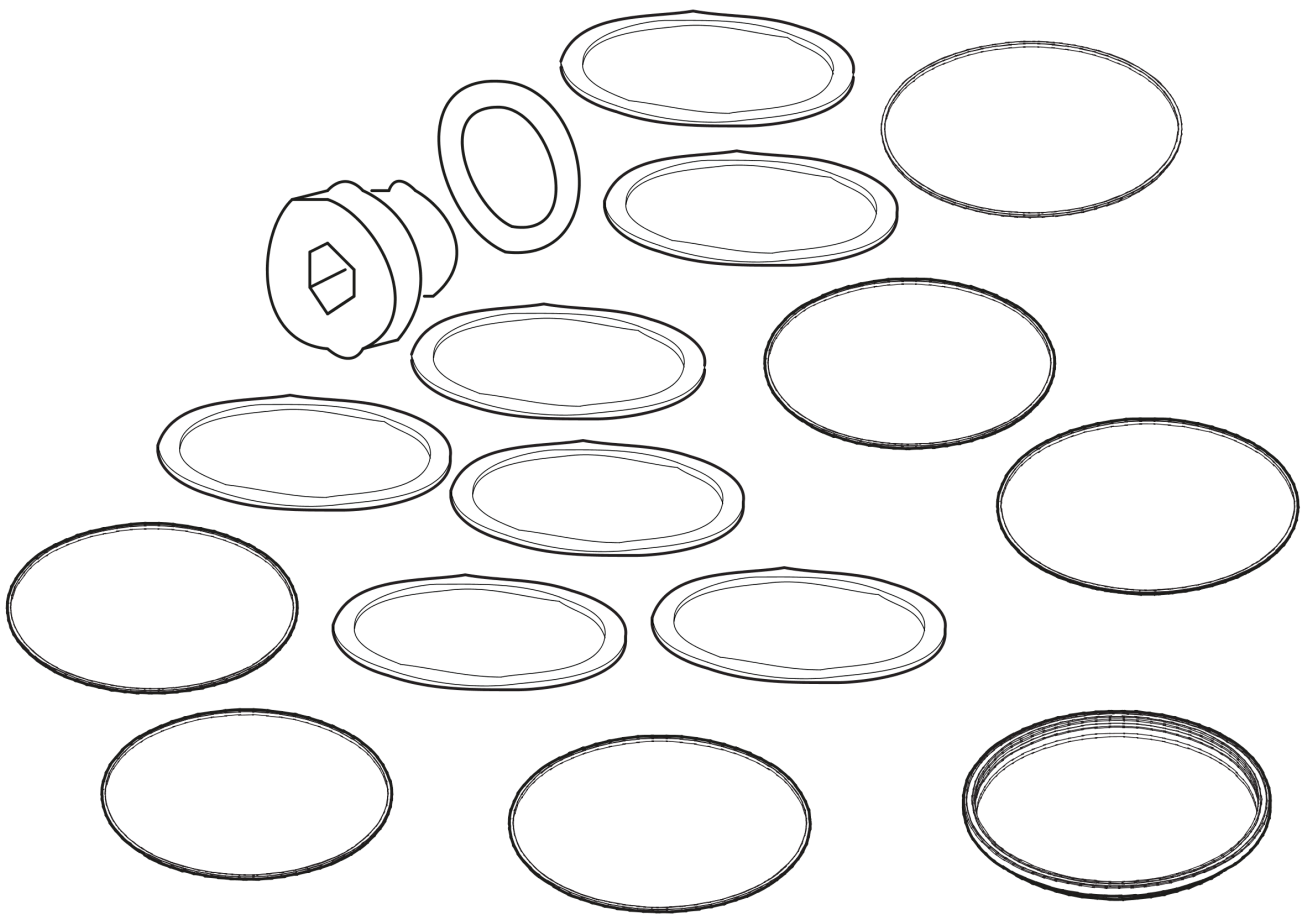
Seal kit	4
Label kit	6

Mechanical

Breaker body	8
Impact mechanism	10
Main dimensions, mm (in.)	12
Tightening torques	13
Assembly instruction	16

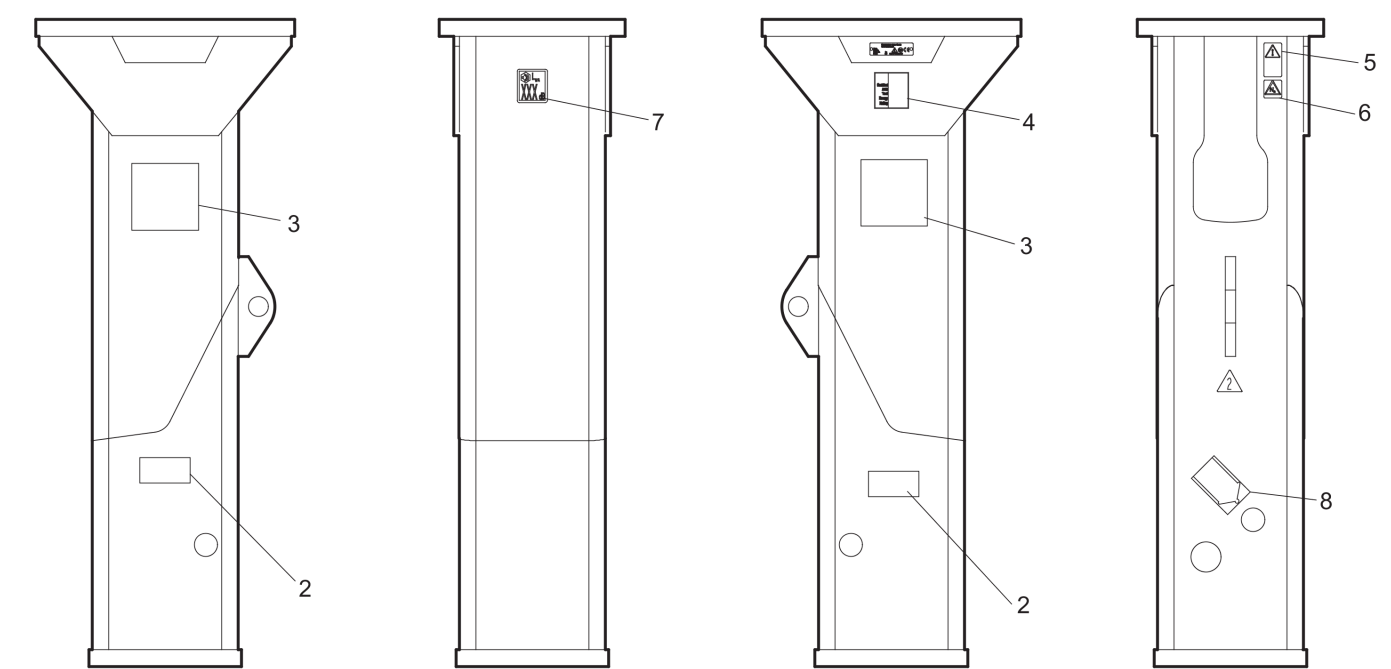
Options/accessories

Optional equipment	17
Hydraulic hose	20
Working tools RX 8	22

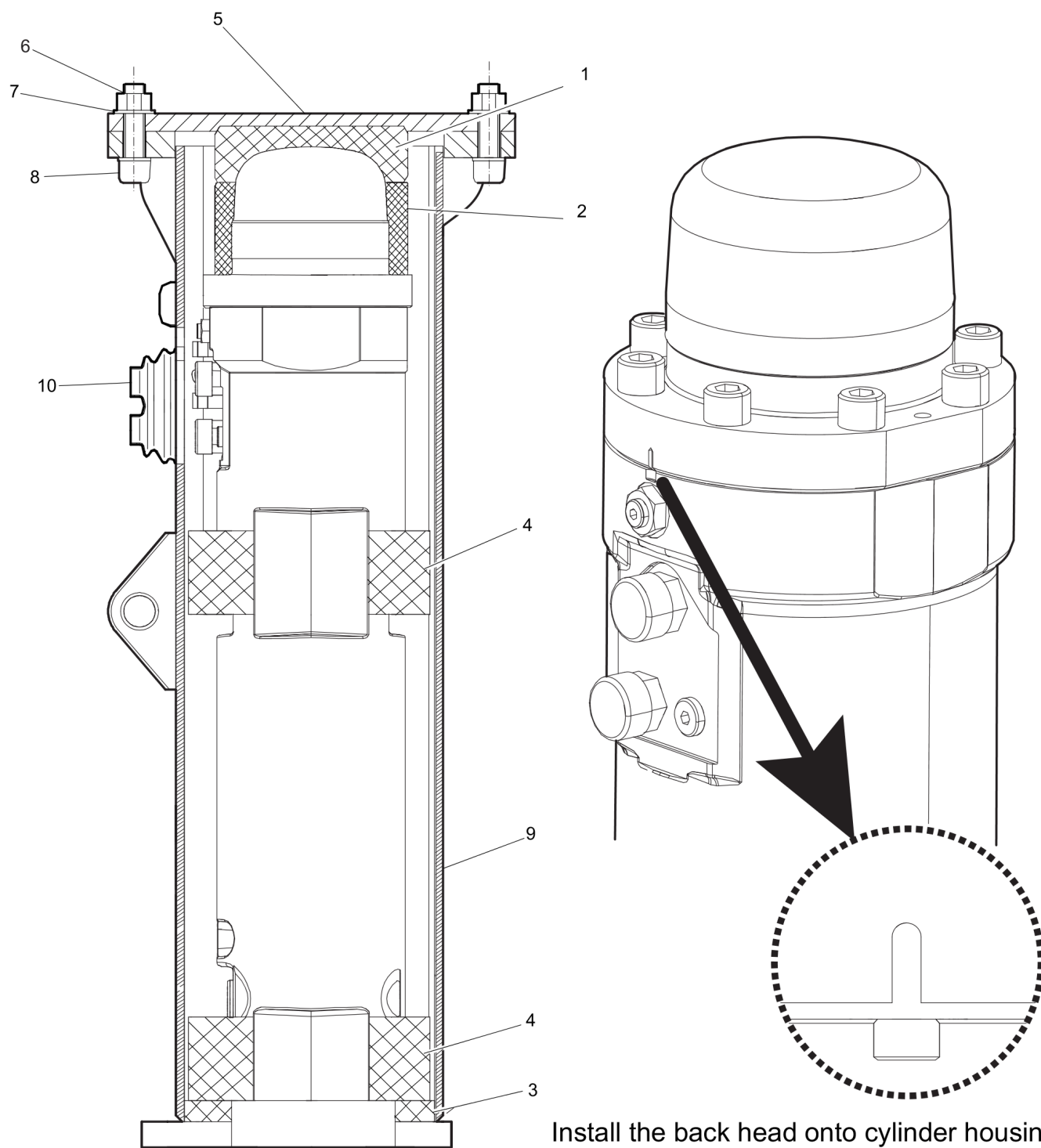
Service, repair and wear part kits Seal kit

Item	Part No.	Name	Qty	L
-	3382070011	Seal kit	1	
.-	0663212005	O-ring, 32 x 5.7 mm NBR 90°IRH	1	
.-	0663925100	O-ring, 15.08 x 2.62 mm	1	
.-	0665090014	Seal	1	
.-	3315296625	Seal, one piece	1	
.-	3360478426	Threaded plug	1	
.-	3361192002	Seal	1	
.-	3361192003	Seal	2	
.-	3361192004	O-ring, 81.92 x 5.33 mm	2	
.-	3361192007	O-ring, 132.75 x 5.33 mm	1	
.-	3361192008	Back-up ring, 134.09 x 4.65 mm	1	
.-	3361192011	O-ring, 126.37 x 5.33 mm	1	
.-	3361192013	Seal, 70 x 85.1 x 6.3 mm	1	
.-	3361192014	Step seal	1	
.-	3361192015	O-ring, 85.09 x 5.33 mm	1	
.-	3361192016	Wiper, 80 x 90 x 6.3 mm	1	
.-	3361192067	O-ring, 19.18 x 2.46 mm	1	
.-	3361192066	O-ring, 16.36 x 2.21 mm	2	

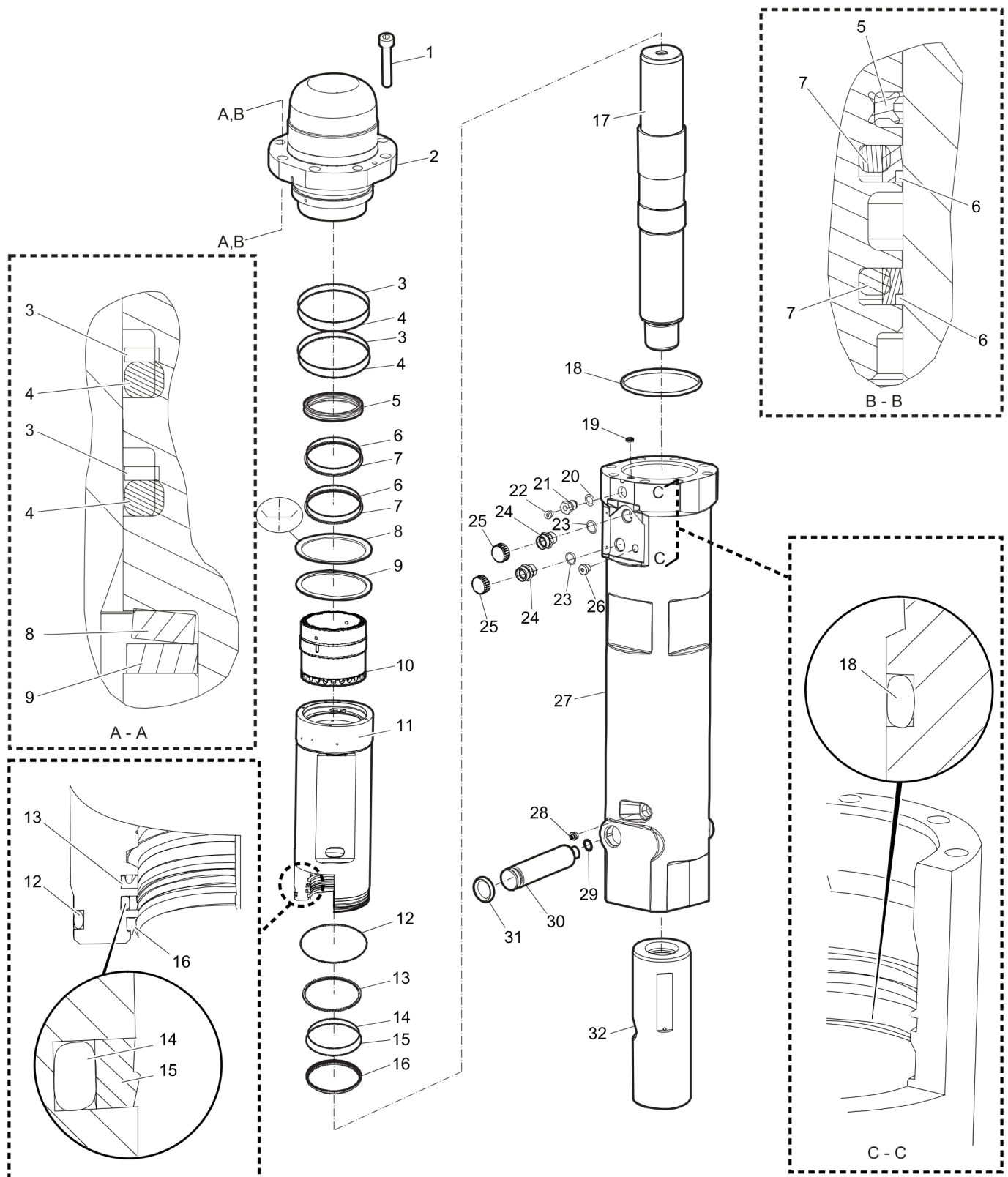
Service, repair and wear part kits Label kit



Item	Part No.	Name	Qty	L
1	3315386090	Label kit	1	
2	-	Product label	2	
3	-	Product label	2	
4	-	AEM sign	1	
5	3315262900	Safety label	1	
6	3315263000	Safety label	1	
7	-	Sound power label, 114 dB	1	
8	3360995411	Lubricating symbol	1	

Mechanical Breaker body

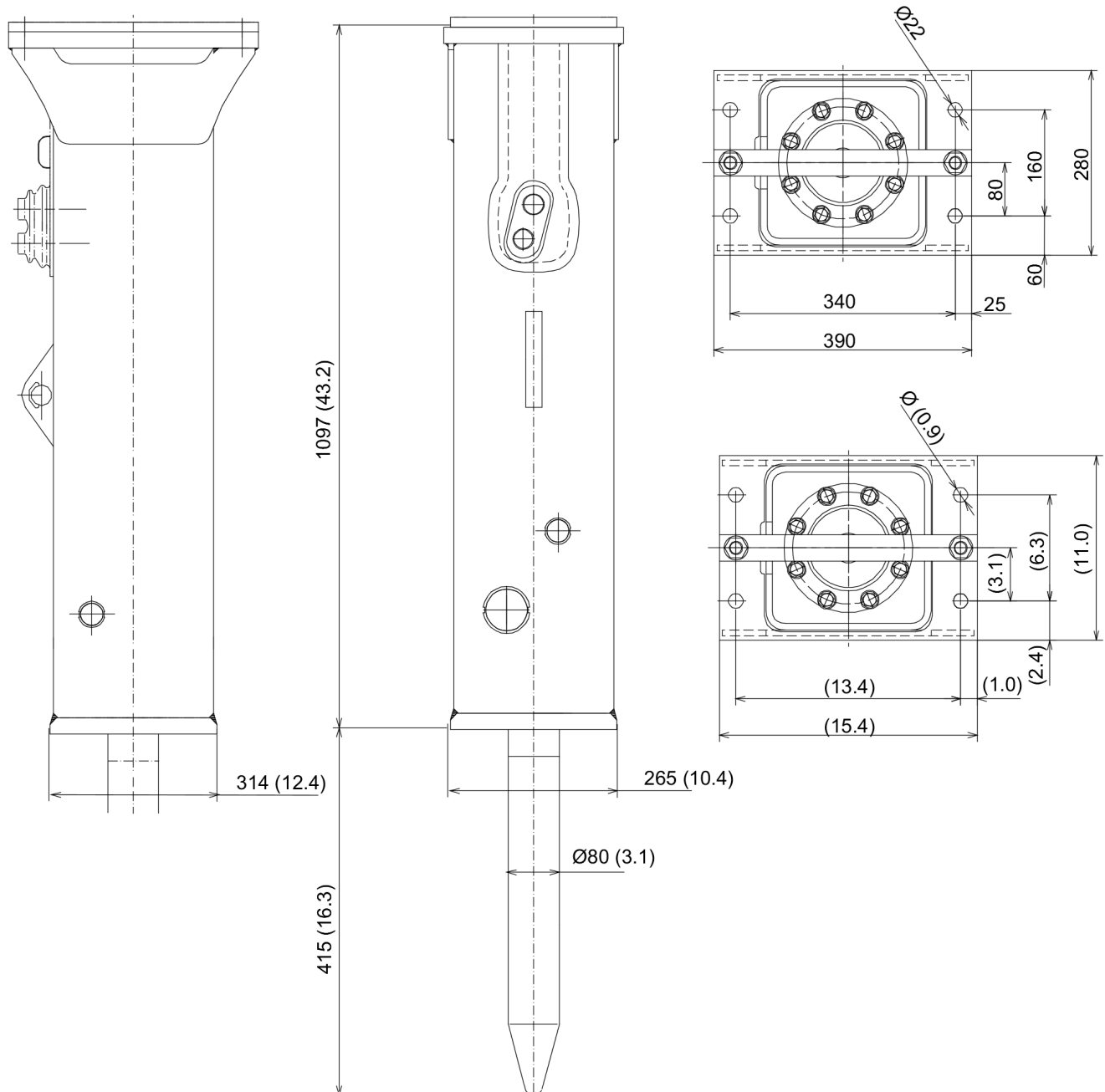
Item	Part No.	Name	Qty	L
1	3315422210	Shock absorber, upper	1	
2	3315422220	Spacer	1	
3	3315290200	Shock absorber	1	
4	3315425400	Lower guide	2	
5	-	Base plate, see "Optional equipment"	1	
6	3360103251	Nut	6	
7	3361850748	Pair of lock washers	12	
8	0211155703	Screw, optional, M20 x 80 mm	6	
9	3315289400	Breaker box	1	
10	3362491006	Cover	1	

Mechanical Impact mechanism

Refer to Parts Online for the most up to date information. The printed information might be outdated.

Wed Feb 18 10:12:50 MST 2015

Item	Part No.	Name	Qty	L
1	0211148303	Screw, M16 x 70 mm	8	
2	3315411000	Back head	1	
3	3361192008	Back-up ring, 134.09 x 4.65 mm	2	
4	3361192007	O-ring, 132.75 x 5.33 mm	2	
5	3361192002	Seal	1	
6	3361192003	Seal	2	
7	3361192004	O-ring, 81.92 x 5.33 mm	2	
8	3361150004	Plate spring	1	
9	3361150005	Spacer	1	
10	3361150106	Control valve	1	
11	3361150002	Cylinder bush	1	
12	3361192011	O-ring, 126.37 x 5.33 mm	1	
13	3361192013	Seal, 70 x 85.1 x 6.3 mm	1	
14	3361192028	Seal	1	
15	3361192014	Step seal	1	
16	3361192016	Wiper, 80 x 90 x 6.3 mm	1	
17	3315332800	Piston	1	
18	3315296625	Seal, one piece	1	
19	0665090014	Seal	1	
20	0663925100	O-ring, 15.08 x 2.62 mm	1	
21	3363087286	Filling valve complete	1	
22	3360478426	Threaded plug	1	
23	3361192067	O-ring, 19.18 x 2.46 mm	2	
24	3361031476	Nipple, M26 x 1.5 mm	2	
25	3361353486	Cap	2	
26	3363066963	Plug, M14 x 1.5 mm	1	
27	3315408000	Housing	1	
28	0544215300	Grease nipple	1	
29	3361192066	O-ring, 16.36 x 2.21 mm	1	
30	3315418100	Retainer	1	
31	0663212005	O-ring, 32 x 5.7 mm NBR 90°IRH	1	
32	3361150012	Wear bush	1	

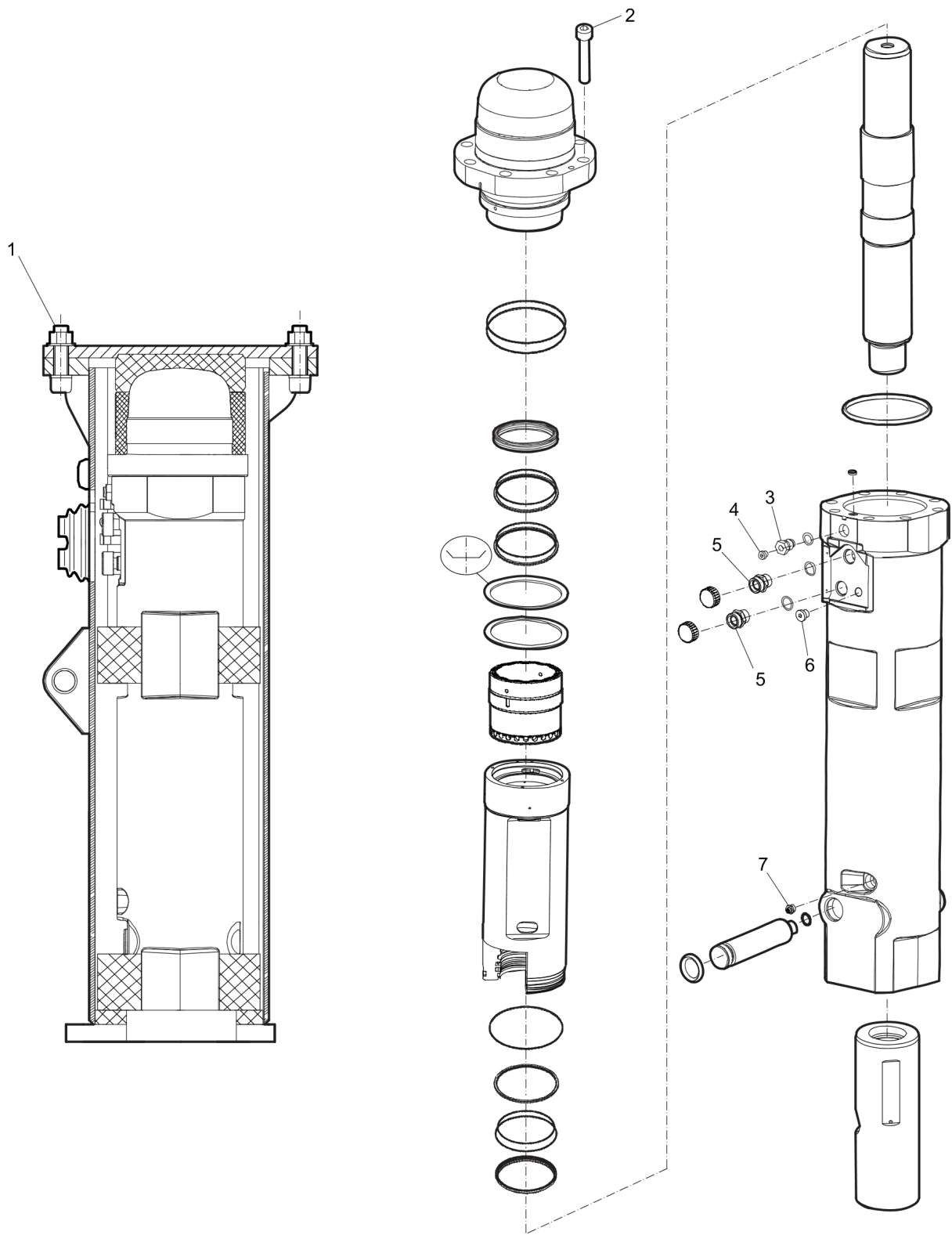
Mechanical Main dimensions, mm (in.)

Refer to Parts Online for the most up to date information. The printed information might be outdated.

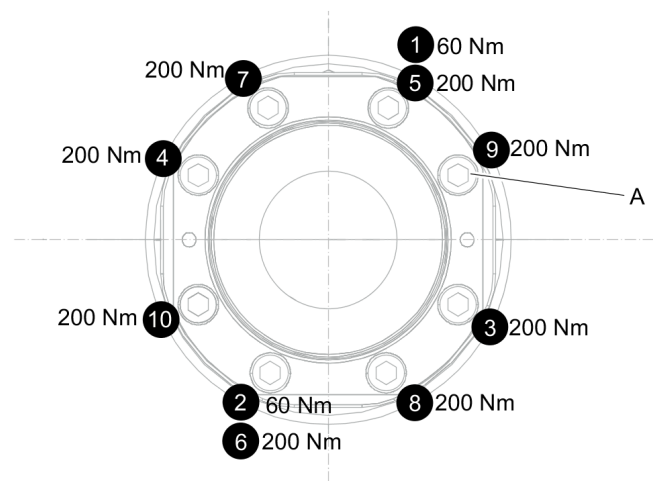
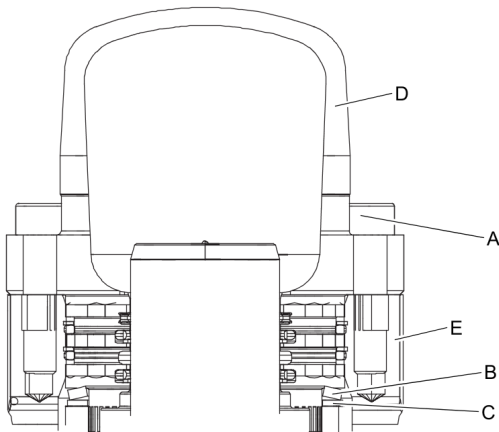
Wed Feb 18 10:12:51 MST 2015

This page intentionally left blank

Mechanical Tightening torques

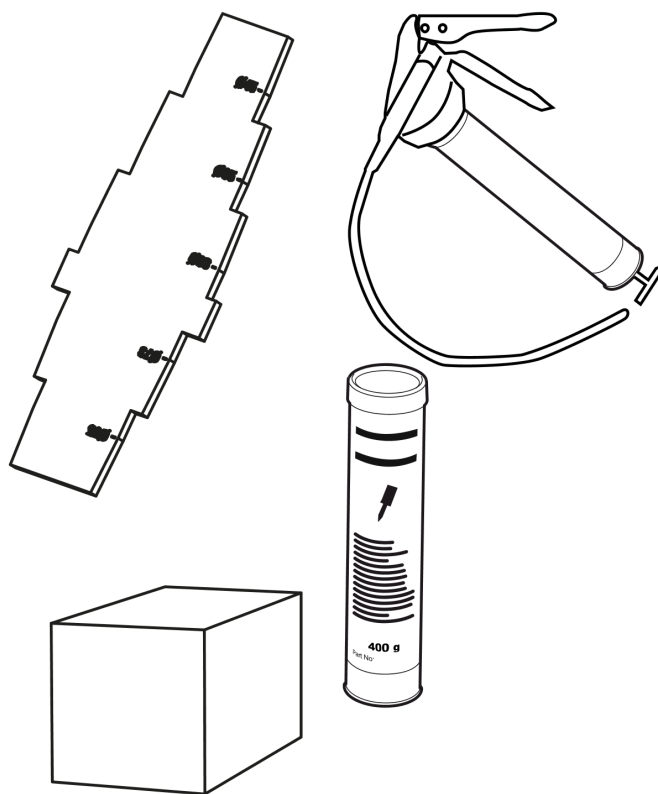


Item	Part No.	Name	Qty	L
1	-	Screw, 390 Nm	-	
2	-	Screw, 60 Nm/200 Nm, see "Assembly instruction"	-	
3	-	Filling valve, 130 Nm	-	
4	-	Threaded plug, 20 Nm	-	
5	-	Fitting, 90 Nm	-	
6	-	Plug, 30 Nm	-	
7	-	Grease nipple, 20 Nm	-	

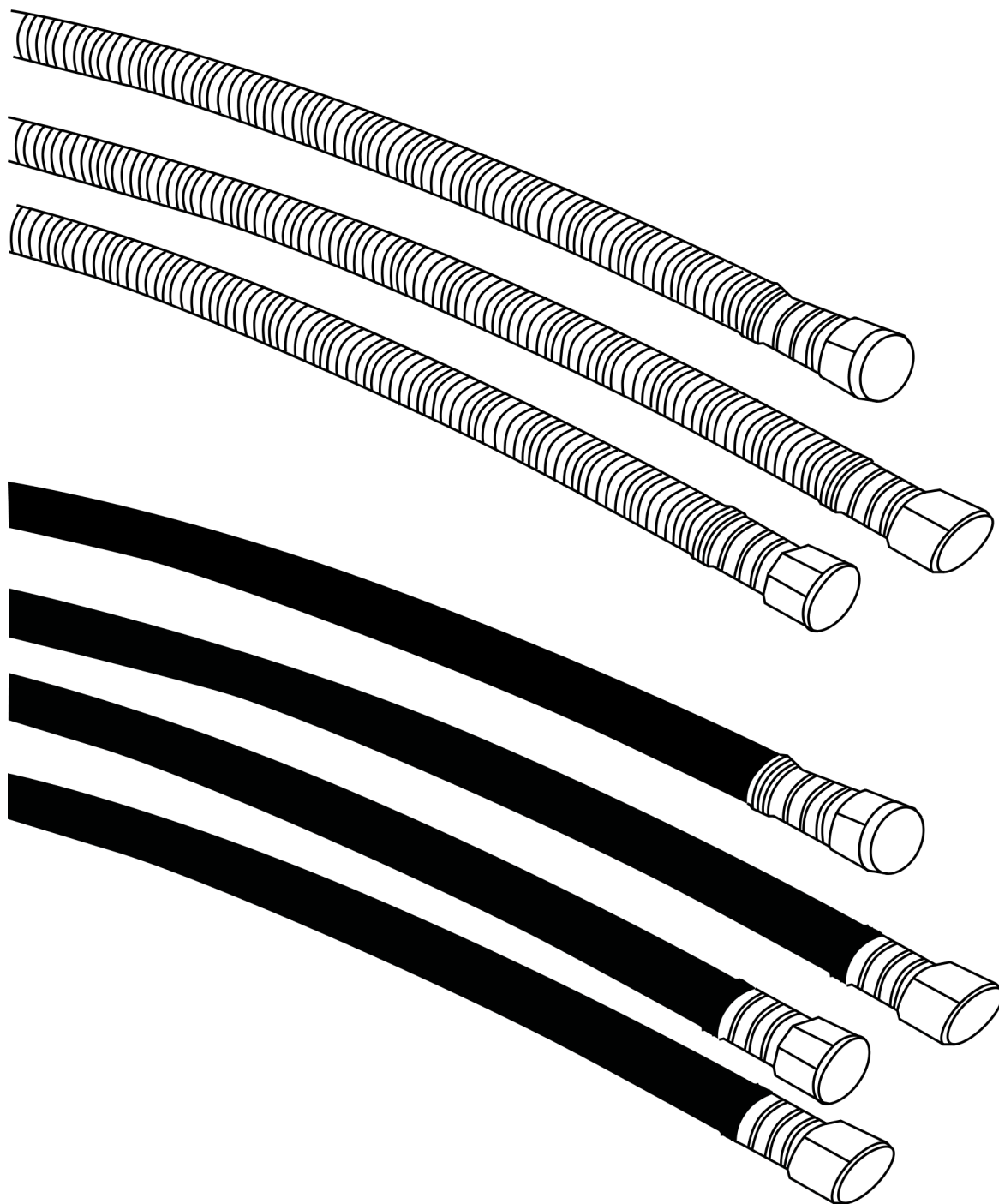
Mechanical Assembly instruction

1. Make sure the spring plate (B) and spacer (C) are centered before mounting the back head (D).
 2. Press the back head (D) down on the spring plate (B) and spacer (C).
 3. Grease the screws (A) with Molykote® 1000 (Molykote is a registered trademark of Dow Corning Corporation), and manually fit them on the back head (D)
 4. Torque the first two screws (A) in the order shown in picture above to 60 Nm. This will compress the spring plate (B), and fit the back head (D) into the cylinder housing (E). Torque the rest of screws (A) in the order shown in picture above to 200 Nm.
- NOTICE Always start by fitting screws by hands.
- NOTICE Tighten in two stages.
- Stage 1: 60 Nm
- Stage 2: 200 Nm

This page intentionally left blank

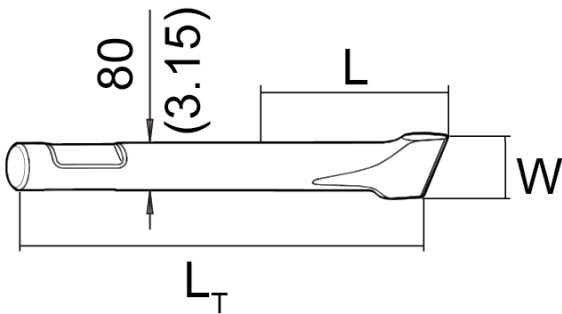
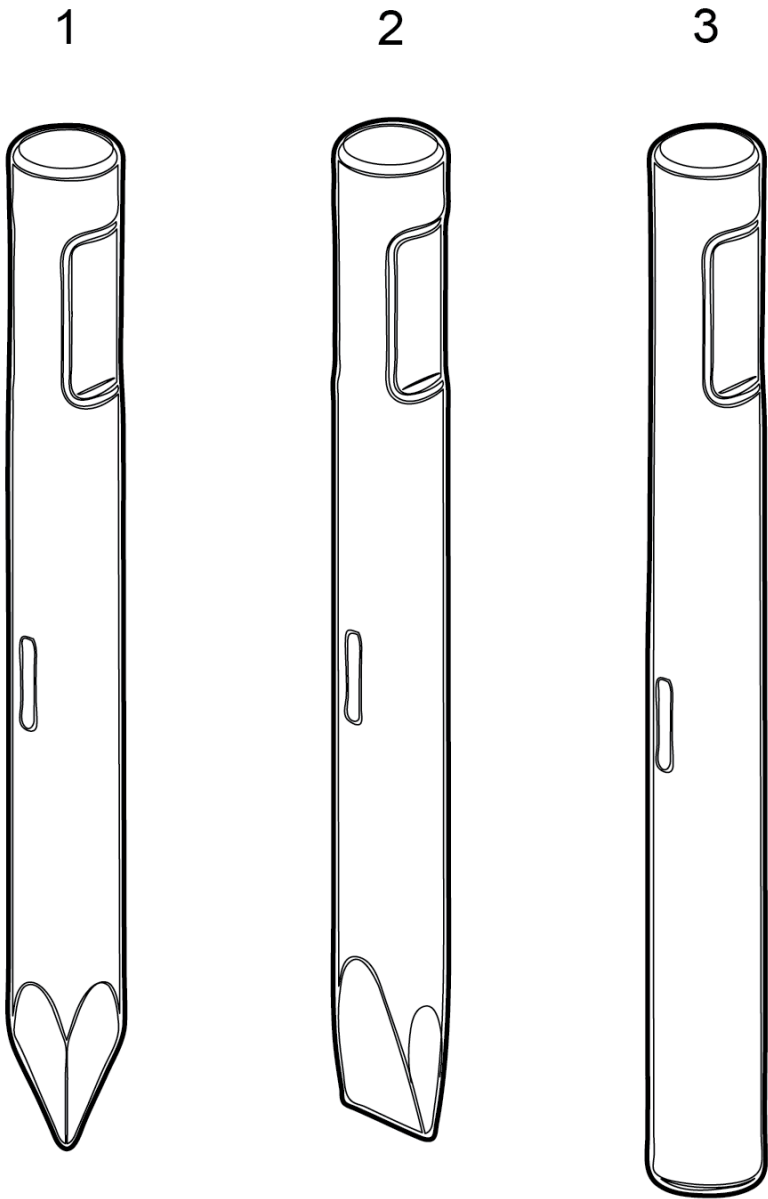
Options/accessories Optional equipment

Item	Part No.	Name	Qty	L
1	3363094913	Chisel paste cartridge, 400 g x 12 pcs, 0.88 lb x 12	1	
2	0909107100	Grease gun	1	
3	3315303700	Test gauge wear bush	1	
4	3363089844	Service box with nitrogen cylinder, 2 l, 0.43 gal (0.53 US gal)	1	
5	3363094940	Service box without nitrogen cylinder	1	
6	3363099701	Base plate, optional	1	
7	3363106508	Bolt kit	1	

Options/accessories Hydraulic hose

Item	Part No.	Name	Qty	L
1	-	Standard connection hoses	1	
2	3363491002	Hose, both ends 18 L(M26x1.5) length 1500 mm	2	
3	3363115423	Hose, both ends 18 L(M26x1.5) length 1750 mm	2	
4	3363115424	Hose, both ends 18 L(M26x1.5) length 2000 mm	2	
5	3363115425	Hose, both ends 18 L(M26x1.5) length 2400 mm	2	
6	-	Heavy duty connction hoses with spring protection	1	
7	3360995717	Hose, both ends 18 L(M26 x 1.5) length 1500 mm	2	
8	3363115426	Hose, both ends 18 L(M26x1.5) length 1750 mm	2	
9	3362235159	Hose, both ends 18 L(M26 x 1.5) length 2000 mm	2	
10	3363083313	Hose, both ends 18 L(M26 x 1.5) length 2400 mm	2	

Options/accessories Working tools RX 8



Item	Part No.	Name	Qty	L
1	4211105401	Moil point (conical)	1	A
2	4211105402	Chisel (cross)	1	B
3	4211105403	Blunt tool	1	C

Comments for Page: Working tools RX 8

(L)OCAL REMARKS

A | L=415 mm, LT=745 mm, Wt=26.3 kg

L=16.34 inch, LT=29.33 inch, Wt=58.0 lb

B | W= 80 L=415 mm, LT=745 mm, Wt=27.5 kg

W=3.15 inch, L=16.34 inch, LT=29.33 inch, Wt=60.5 lb

C | L=415 mm, LT=745 mm, Wt=28.7 kg

L=16.34 inch, LT=29.33 inch, Wt=63.3 lb

