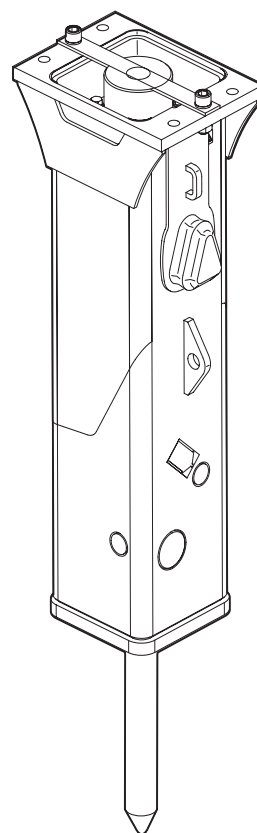


# **Spare parts list**

## **Hydraulic breakers**

### **RX 6 - II**

	Valid from serial number
RX 6 - II	BES43569



## General information

This spare parts list applies to the following:

Part number	Description
8460050067	RX 6 - II

Use only authorized parts. Any damage or malfunction caused by the use of unauthorized parts is not covered by Warranty or Product Liability. Any unauthorized use or copying of the contents or any part thereof is prohibited. This applies in particular to trademarks, model denominations, part numbers, and drawings.

### Instructions for use

This spare parts list contains no safety regulations and is merely intended to assist in the ordering of spare parts.

For information about operating, servicing, or repairing, the relevant Safety and operating instructions must be consulted at all costs.

Please observe the safety instructions listed in the relevant Safety and operating instructions!

## Contents

### Service, repair and wear part kits

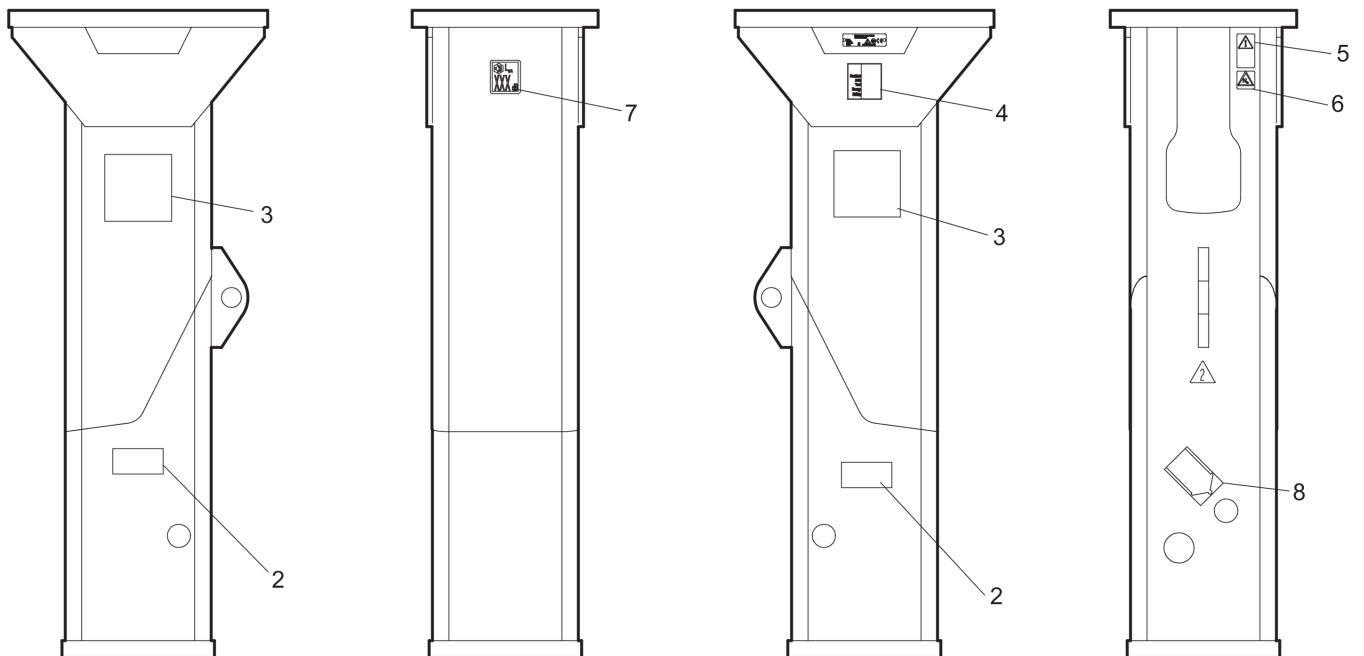
Label kit .....	1
Seal kit .....	3

### Mechanical

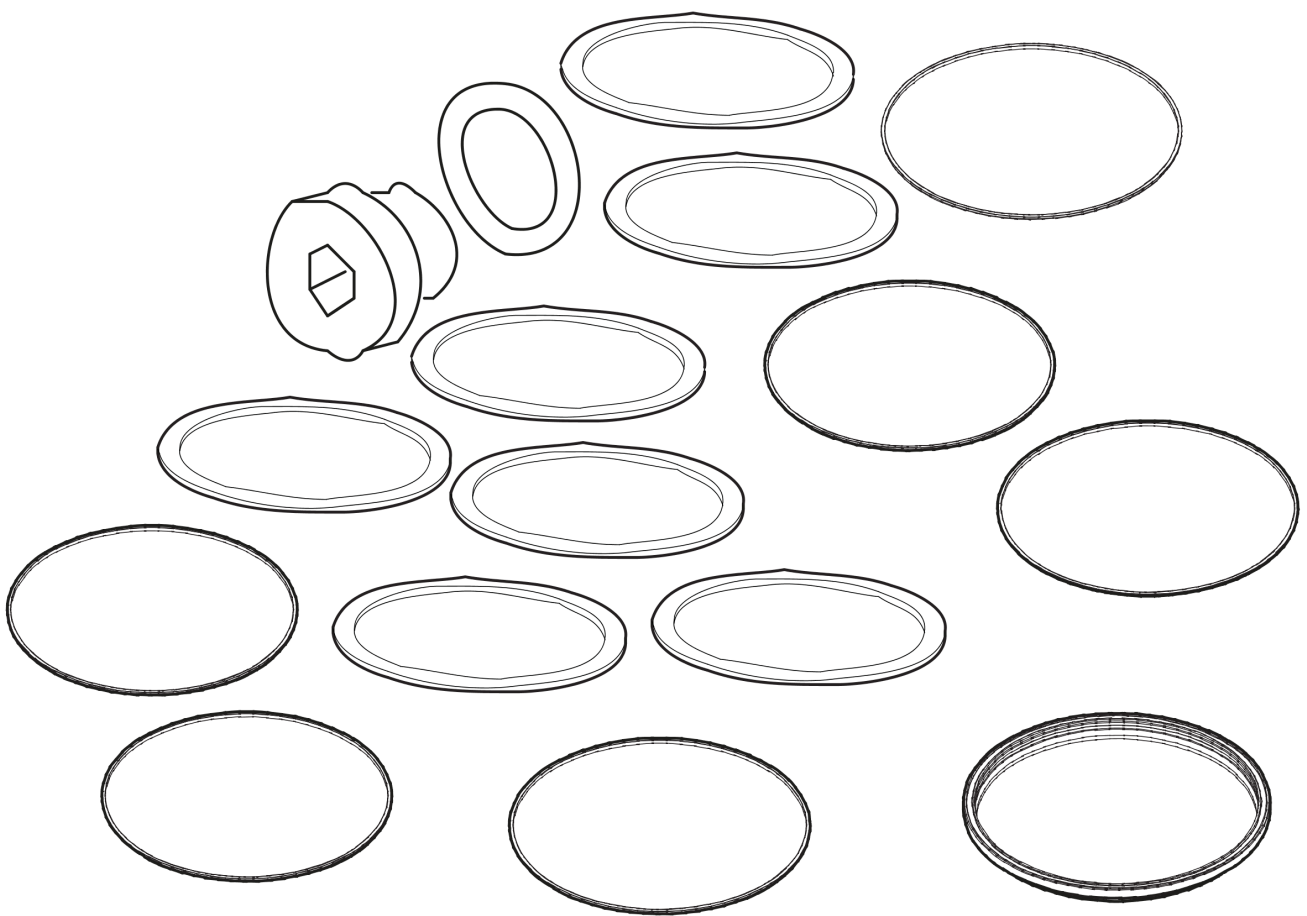
Breaker body .....	5
Impact mechanism .....	7
Main dimensions, mm (in.) .....	9
Tightening torques .....	10
Assembly instruction .....	13

### Options/accessories

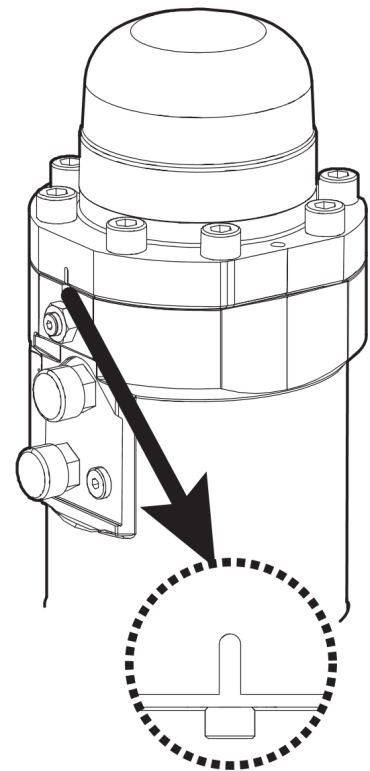
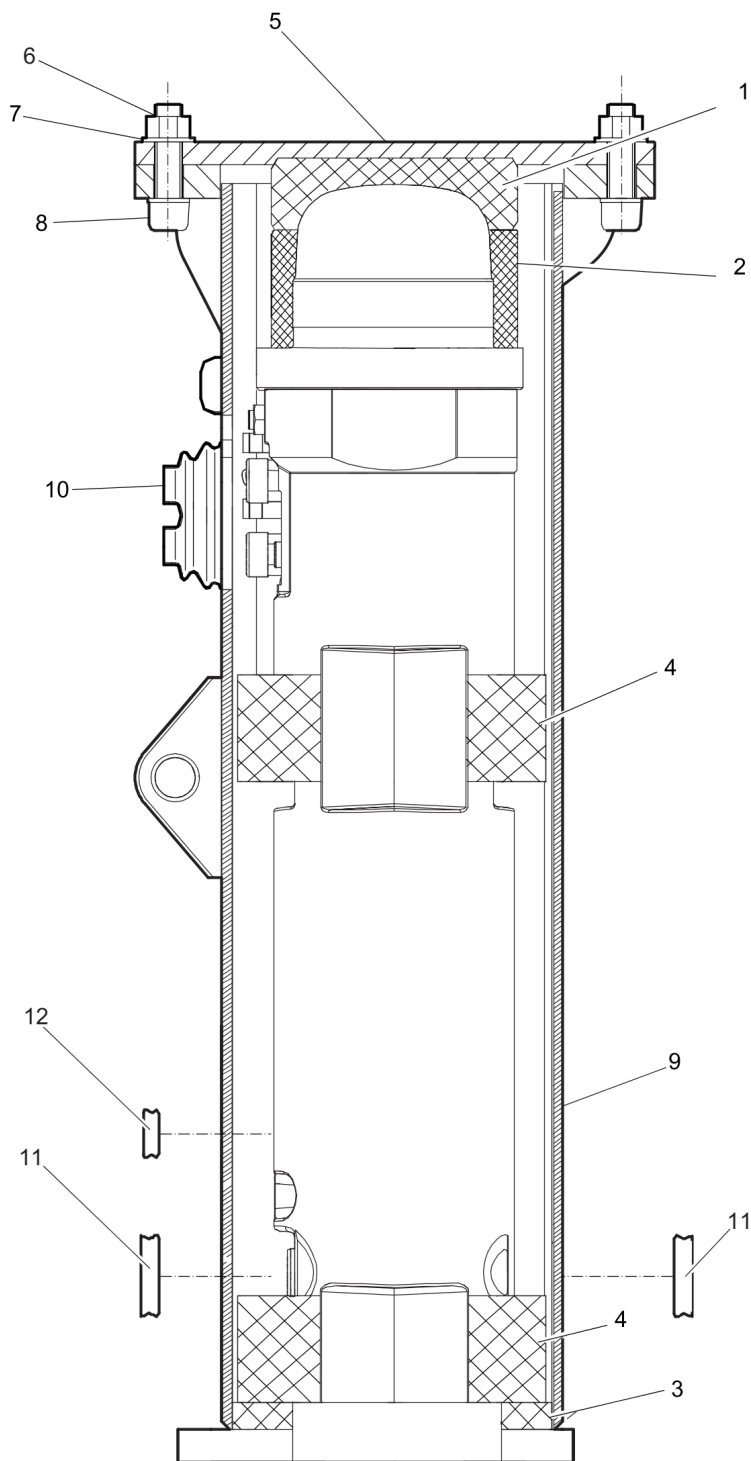
Optional equipment .....	14
Hydraulic hose .....	17
Working tools RX 6 .....	19

**Service, repair and wear part kits** Label kit

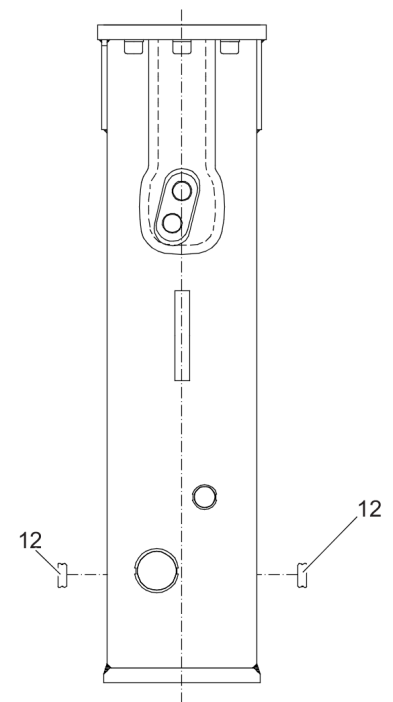
Item	Part No.	Name	Qty	L
1	3315385990	Label kit	1	
2	-	Product label	2	
3	-	Product label	2	
4	-	AEM sign	1	
5	3315262900	Safety label	1	
6	3315263000	Safety label	1	
7	-	Sound power label, 114 dB	1	
8	3360995411	Lubricating symbol	1	

**Service, repair and wear part kits** Seal kit

Item	Part No.	Name	Qty	L
-	3382070009	Seal kit	1	
.-	0663212006	O-ring, 26 x 6 mm	1	
.-	0663925100	O-ring, 15.08 x 2.62 mm	1	
.-	0665090014	Seal, SCR 10 x 16 x 2.4 mm	1	
.-	3360478426	Threaded plug	1	
.-	3361192017	Seal	1	
.-	3361192018	Seal	2	
.-	3361192019	O-ring, $\varnothing 72.39 \times 5.33$ mm , $\varnothing 2.85 \times 0.21$ in.	2	
.-	3315296620	One piece seal	1	
.-	3361192022	O-ring, $\varnothing 116.84 \times 5.33$ mm , $\varnothing 4.60 \times 0.21$ in.	1	
.-	3361192023	Back-up ring, $\varnothing 118.19 \times 4.65$ mm , $\varnothing 4.65 \times 0.18$ in.	1	
.-	3361192025	O-ring, $\varnothing 113.67 \times 5.33$ mm, 90 shore (NBR)	1	
.-	3361192027	Seal, 70 x 85.1 x 6.3 mm , 2.76 x 3.35 x 0.25 in.	1	
.-	3361192028	Seal	1	
.-	3361192029	O-ring, 75.57 x 5.33 mm , 2.98 x 0.21 in.	1	
.-	3361192030	Wiper, 70 x 80 x 6.3 x 9 mm , 2.76 x 3.15 x 0.25 x 0.35 in.	1	
.-	3361192066	O-ring, 16.36 x 2.21 mm	1	
.-	3361192067	O-ring, 19.18 x 2.46 mm	1	

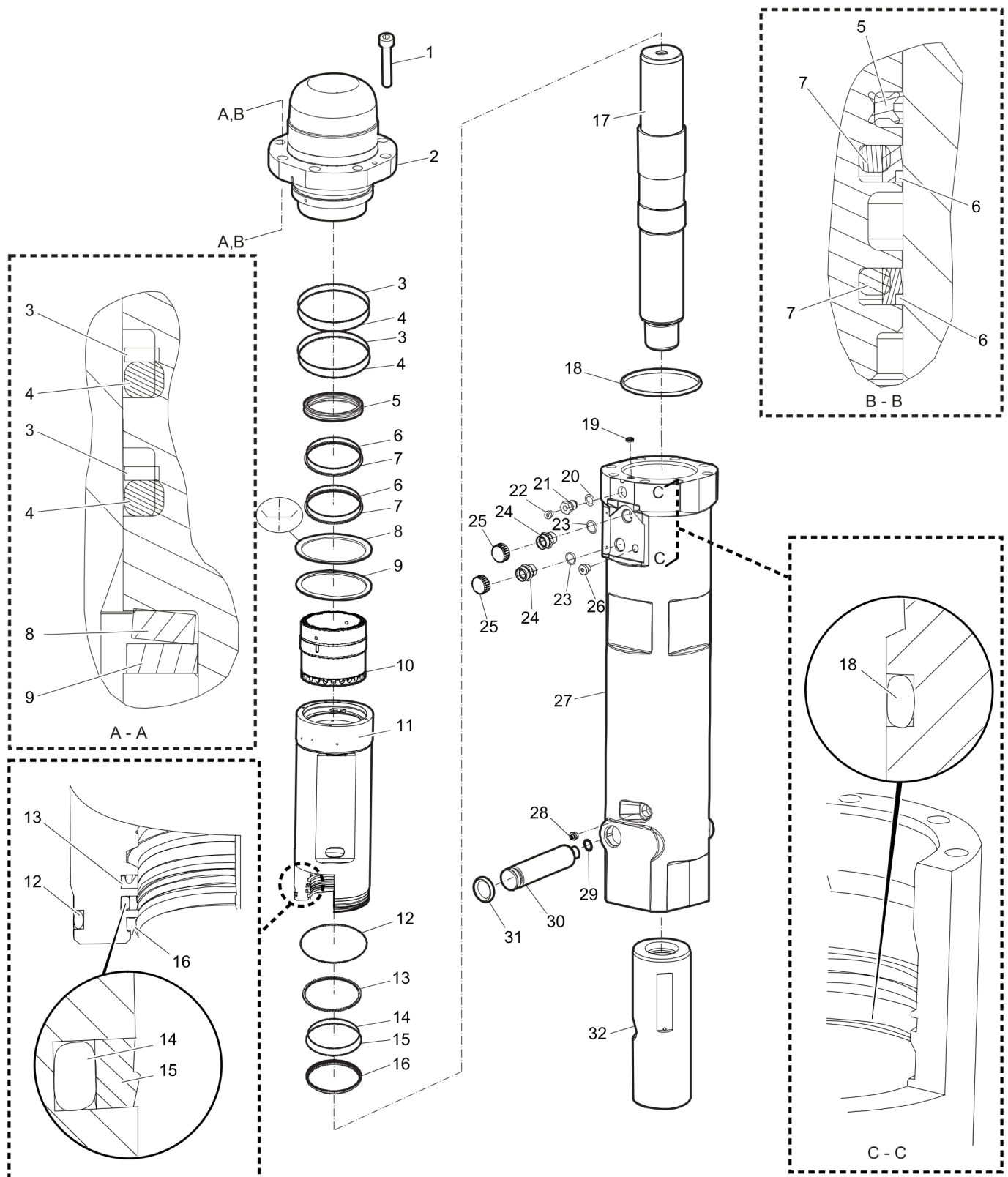
**Mechanical Breaker body**

Install the back head onto cylinder housing where the marks meet each other.





Item	Part No.	Name	Qty	L
1	3315416210	Shock absorber, upper	1	
2	3315416234	Spacer	1	
3	3362440001	Shock absorber	1	
4	3315404217	Lower guide	2	
5	3363099701	Base plate, optional	1	
6	3360103251	Nut	6	
7	3361850748	Pair of lock washers	12	
8	0211155703	Screw, optional, M20 x 80 mm	6	
9	3362140002	Breaker box	1	
10	3362491006	Cover	1	
11	3362491007	Plug	2	
12	3362491004	Plug	3	

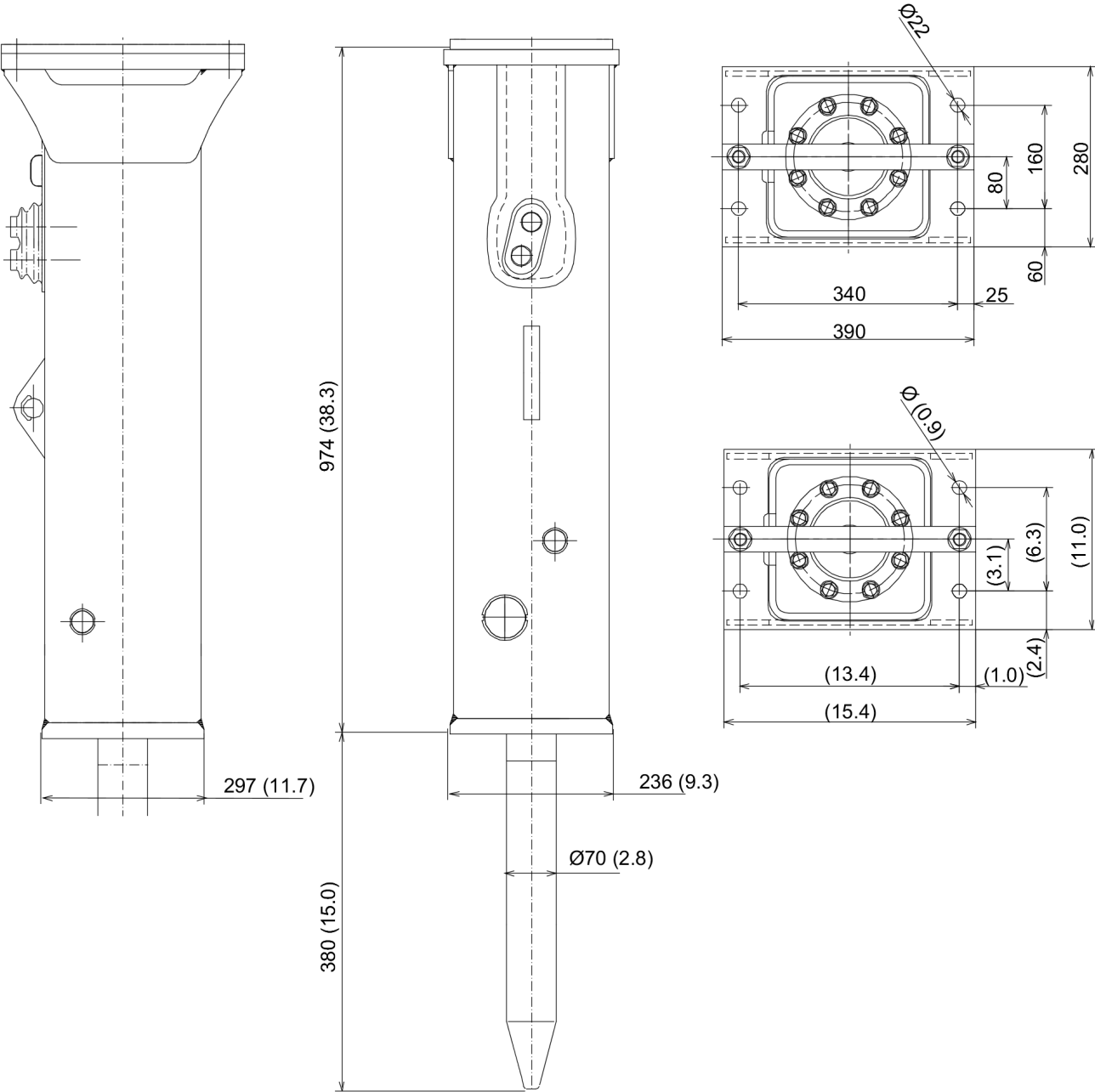
**Mechanical** Impact mechanism

Refer to Parts Online for the most up to date information. The printed information might be outdated.

Tue Apr 14 04:51:54 MDT 2015

Item	Part No.	Name	Qty	L
1	0211148303	Screw, M16 x 70 mm	8	
2	3315413300	Back head	1	
3	3361192023	Back-up ring, $\varnothing 118.19 \times 4.65$ mm , $\varnothing 4.65 \times 0.18$ in.	2	
4	3361192022	O-ring, $\varnothing 116.84 \times 5.33$ mm , $\varnothing 4.60 \times 0.21$ in.	2	
5	3361192017	Seal	1	
6	3361192018	Seal	2	
7	3361192019	O-ring, $\varnothing 72.39 \times 5.33$ mm , $\varnothing 2.85 \times 0.21$ in.	2	
8	3361140004	Plate spring	1	
9	3361140005	Spacer	1	
10	3361140106	Control valve	1	
11	3361140002	Cylinder bush	1	
12	3361192025	O-ring, $\varnothing 113.67 \times 5.33$ mm, 90 shore (NBR)	1	
13	3361192027	Seal, $70 \times 85.1 \times 6.3$ mm , $2.76 \times 3.35 \times 0.25$ in.	1	
14	3361192028	Seal	1	
15	3361140002	Cylinder bush	1	
16	3361192030	Wiper, $70 \times 80 \times 6.3 \times 9$ mm , $2.76 \times 3.15 \times 0.25 \times 0.35$ in.	1	
17	3315305100	Piston	1	
18	3315296620	One piece seal	1	
19	0665090014	Seal, SCR $10 \times 16 \times 2.4$ mm	1	
20	0663925100	O-ring, $15.08 \times 2.62$ mm	1	
21	3363087286	Filling valve complete	1	
22	3360478426	Threaded plug	1	
23	3361192067	O-ring, $19.18 \times 2.46$ mm	2	
24	3361031476	Nipple, M26 x 1.5 mm	2	
25	3361353486	Cap	2	
26	3363066963	Plug, M14 x 1.5 mm	1	
27	3315407000	Housing	1	
28	0544215300	Grease nipple, ISO 7-R 1/4	1	
29	3361192066	O-ring, $16.36 \times 2.21$ mm	1	
30	3315410210	Retainer	1	
31	0663212006	O-ring, $26 \times 6$ mm	1	
32	3361140009	Wear bush	1	

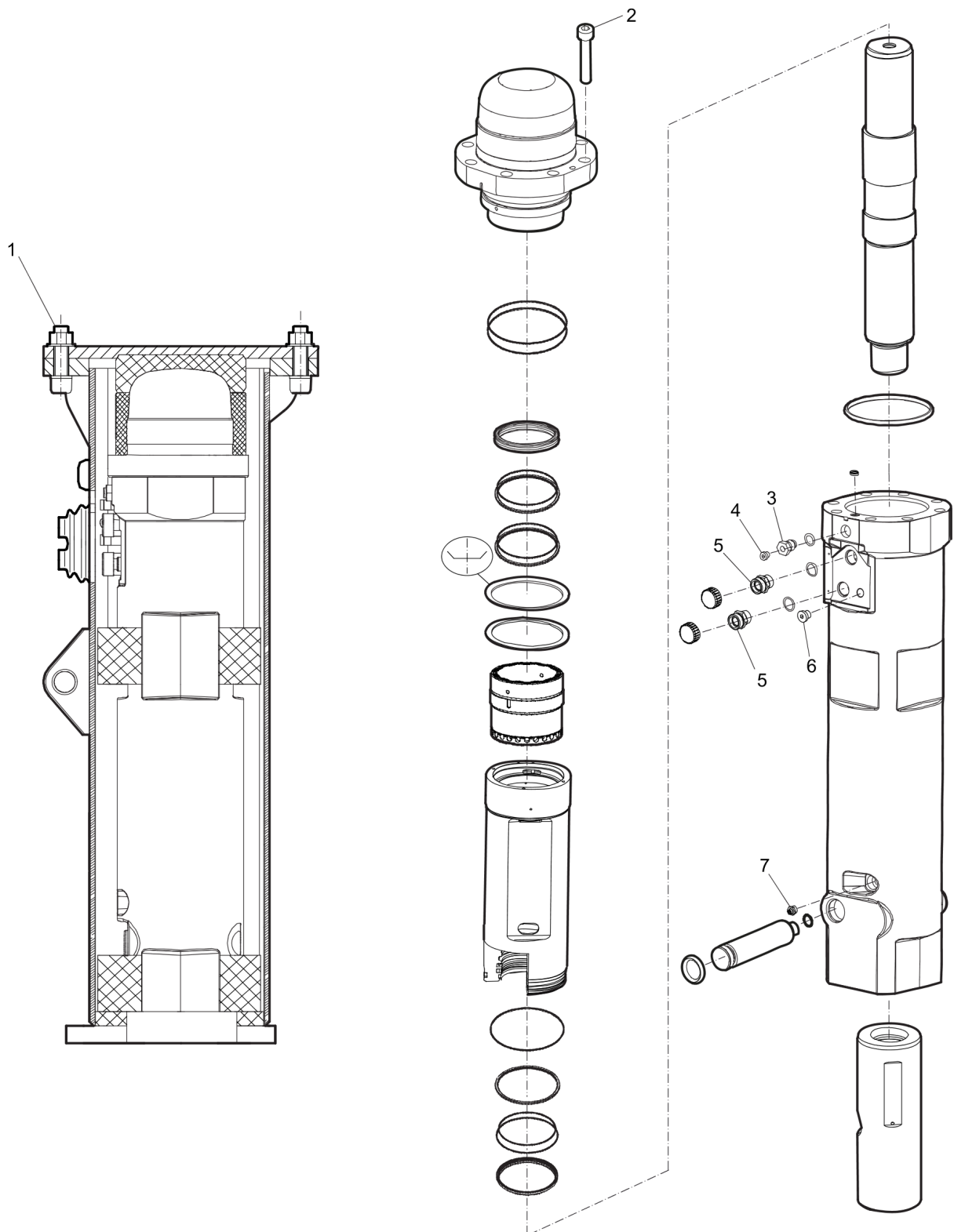
**Mechanical** Main dimensions, mm (in.)



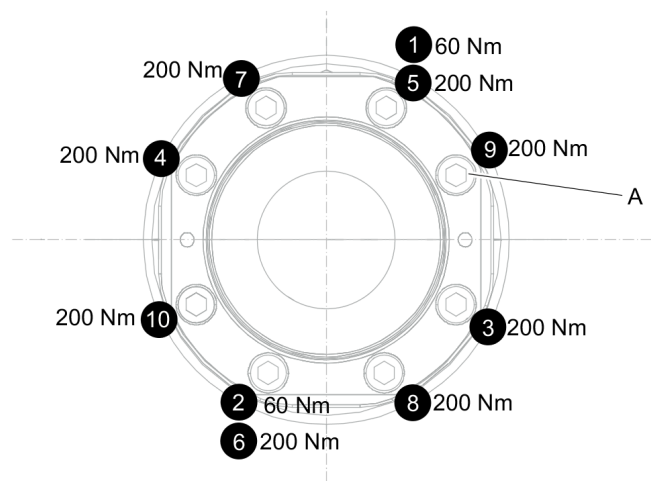
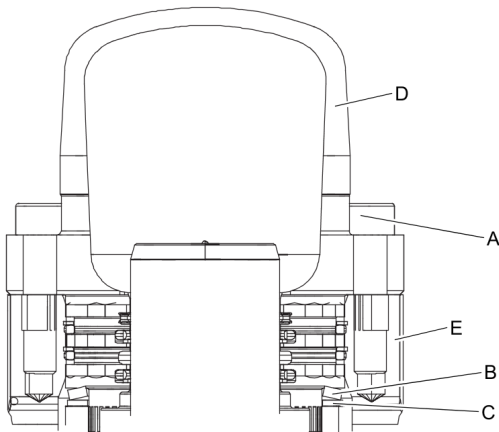
---

**Mechanical** Tightening torques

This page intentionally left blank



Item	Part No.	Name	Qty	L
1	-	Screw, 390 Nm	-	
2	-	Screw, 60 Nm/200 Nm, see "Assembly instruction"	-	
3	-	Filling valve, 130 Nm	-	
4	-	Threaded plug, 20 Nm	-	
5	-	Nipple, 90 Nm	-	
6	-	Plug, 30 Nm	-	
7	-	Grease nipple, 20 Nm	-	

**Mechanical** Assembly instruction

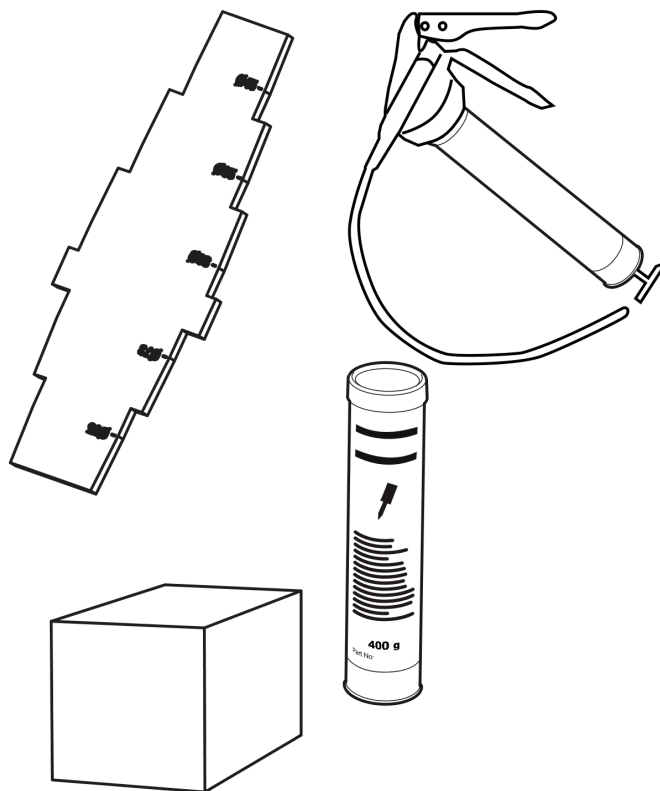
1. Make sure the spring plate (B) and spacer (C) are centered before mounting the back head (D).
  2. Press the back head (D) down on the spring plate (B) and spacer (C).
  3. Grease the screws (A) with Molykote® 1000 (Molykote is a registered trademark of Dow Corning Corporation), and manually fit them on the back head (D)
  4. Torque the first two screws (A) in the order shown in picture above to 60 Nm. This will compress the spring plate (B), and fit the back head (D) into the cylinder housing (E). Torque the rest of screws (A) in the order shown in picture above to 200 Nm.
- NOTICE Always start by fitting screws by hands.
- NOTICE Tighten in two stages.
- Stage 1: 60 Nm
- Stage 2: 200 Nm



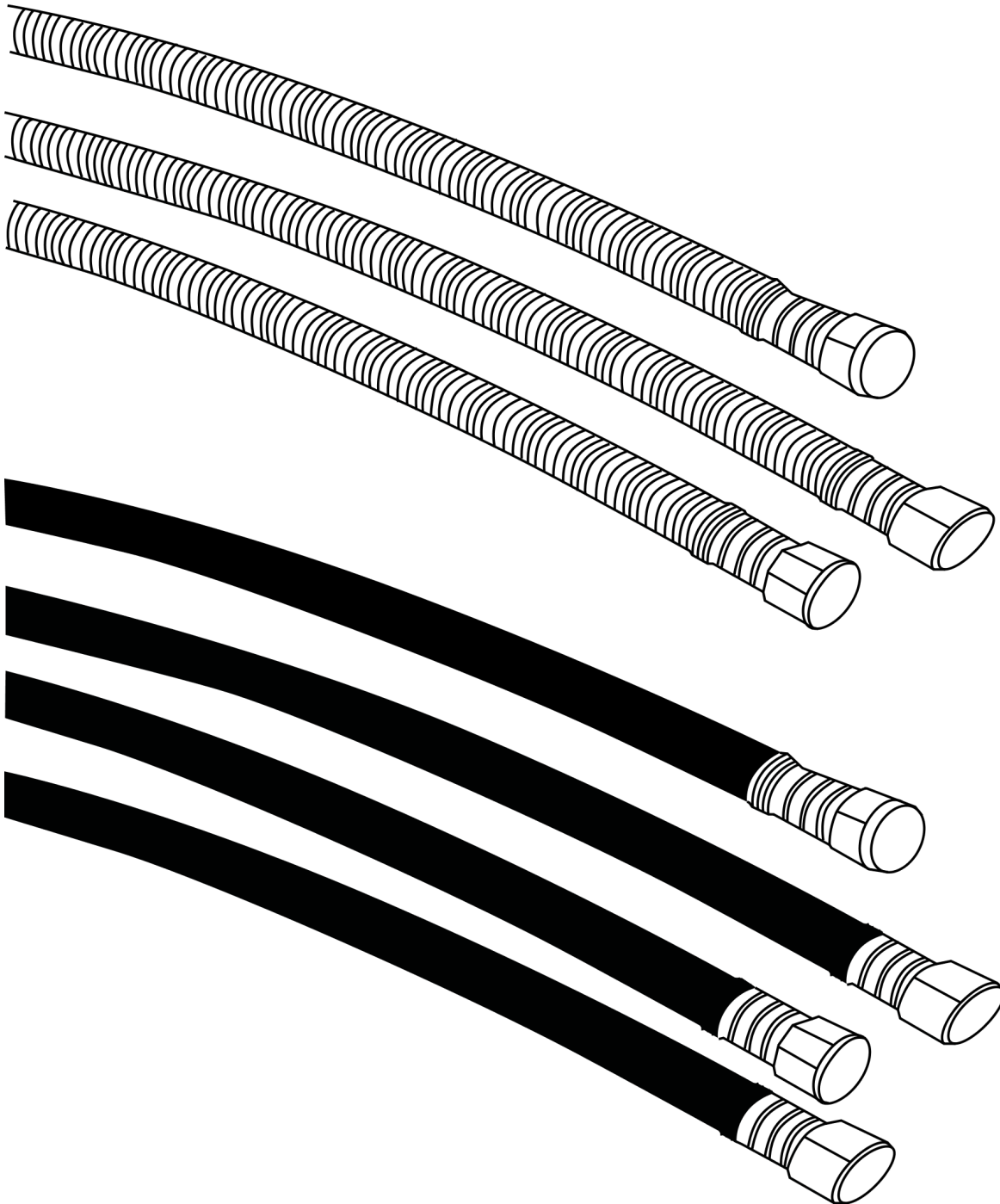
---

**Options/accessories** Optional equipment

This page intentionally left blank

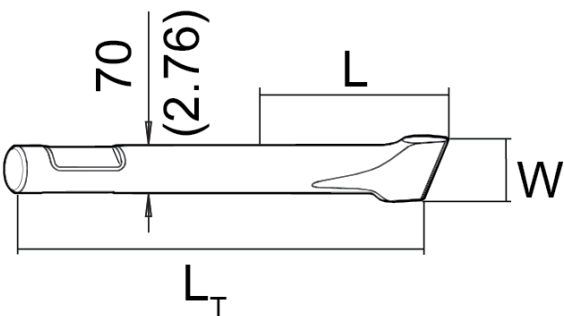
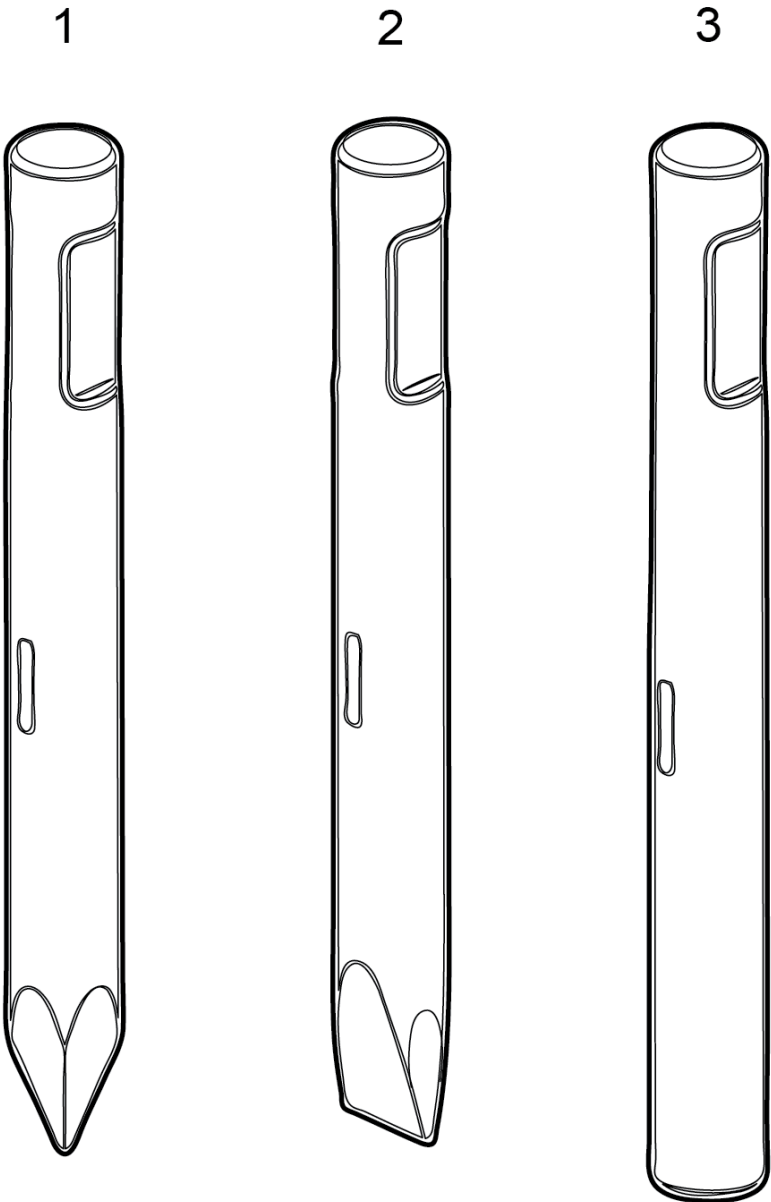


Item	Part No.	Name	Qty	L
1	3363094913	Chisel paste cartridge, 400 g x 12 pcs, 0.88 lb x 12	1	
2	0909107100	Grease gun	1	
3	3315303700	Test gauge wear bush	1	
4	3363089844	Service box with nitrogen cylinder, 2 l, 0.43 gal (0.53 US gal)	1	
5	3363094940	Service box without nitrogen cylinder	1	
6	3363099701	Base plate, optional	1	
7	3363106508	Bolt kit	1	

**Options/accessories** Hydraulic hose

Item	Part No.	Name	Qty	L
1	-	Standard connection hoses	1	
2	3363491002	Hose, both ends 18 L(M26x1.5) length 1500 mm	2	
3	3363115423	Hose, both ends 18 L(M26x1.5) length 1750 mm	2	
4	3363115424	Hose, both ends 18 L(M26x1.5) length 2000 mm	2	
5	3363115425	Hose, both ends 18 L(M26x1.5) length 2400 mm	2	
6	-	Heavy duty connction hoses with spring protection	1	
7	3360995717	Hose, both ends 18 L(M26 x 1.5) length 1500 mm	2	
8	3363115426	Hose, both ends 18 L(M26x1.5) length 1750 mm	2	
9	3362235159	Hose, both ends 18 L(M26 x 1.5) length 2000 mm	2	
10	3363083313	Hose, both ends 18 L(M26 x 1.5) length 2400 mm	2	

Options/accessories Working tools RX 6



Item	Part No.	Name	Qty	L
1	4211105301	Moil point (conical)	1	A
2	4211105302	Chisel (cross)	1	B
3	4211105303	Blunt tool	1	C

Comments for Page: Working tools RX 6

(L)OCAL REMARKS

A | W= - L=380 mm, Lt=665 mm, Wt=18.1 kg

B | W= 70 L=380 mm, Lt=665 mm, Wt=18.9 kg

C | W= - L=380 mm, Lt=665 mm, Wt=19.6 kg

