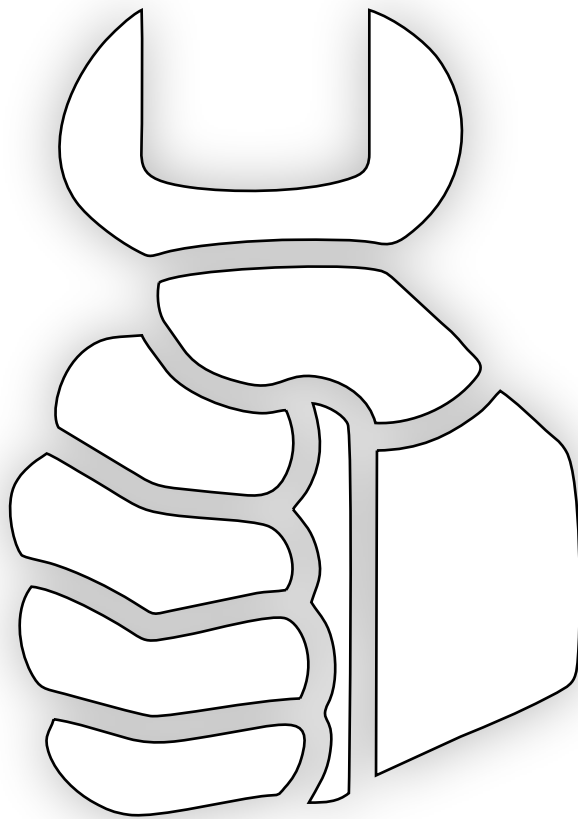


Parts online

Spare parts list



Contents

Service, repair and wear part kits

Label kit	1
Seal kit	3

Mechanical

Spare parts list	5
Hydraulic breaker	7
Tightening torques	9
Assembly instruction	11
Dimension	12

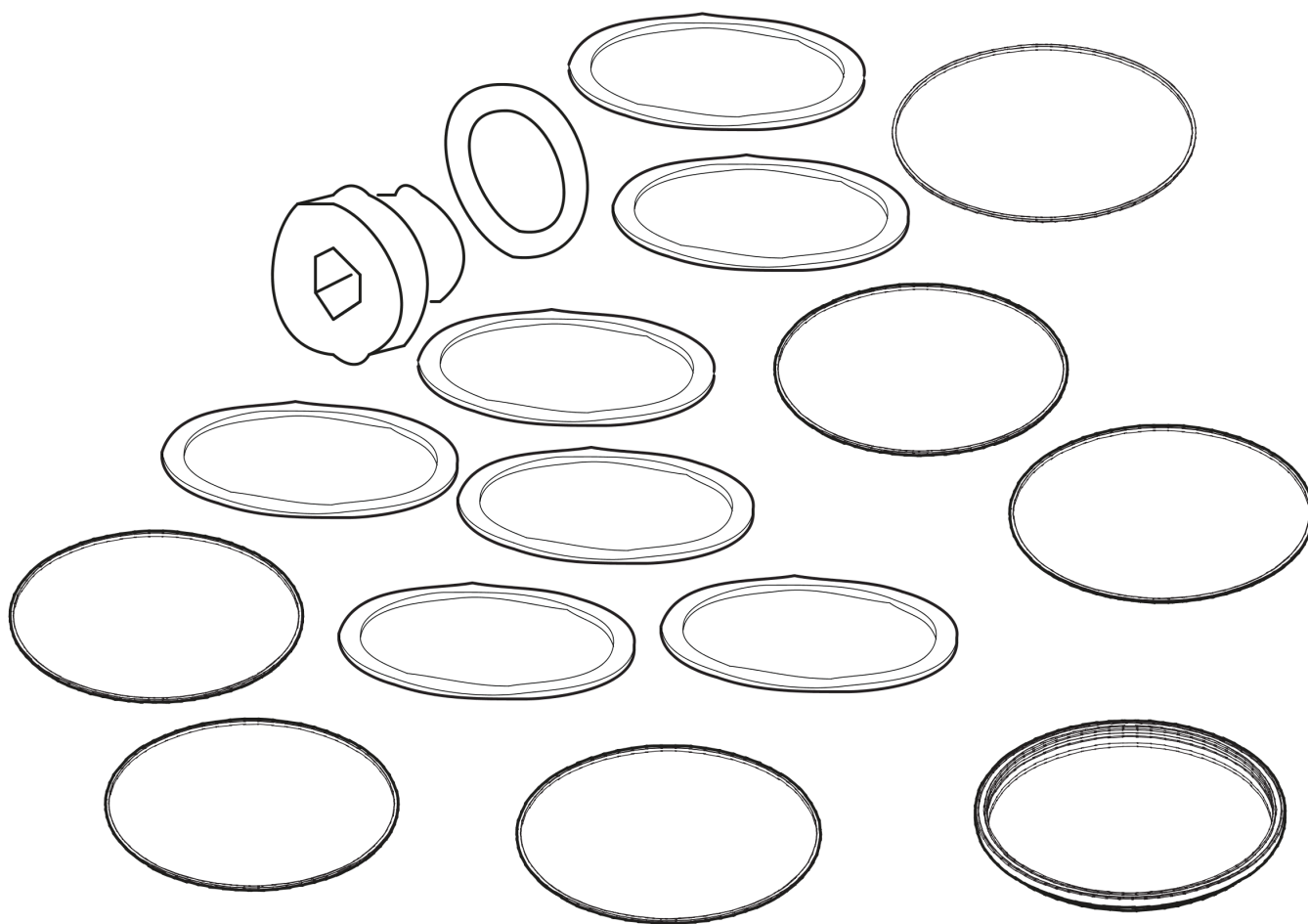
Options/accessories

Optional equipment	14
Hydraulic hoses	17

Service, repair and wear part kits Label kit

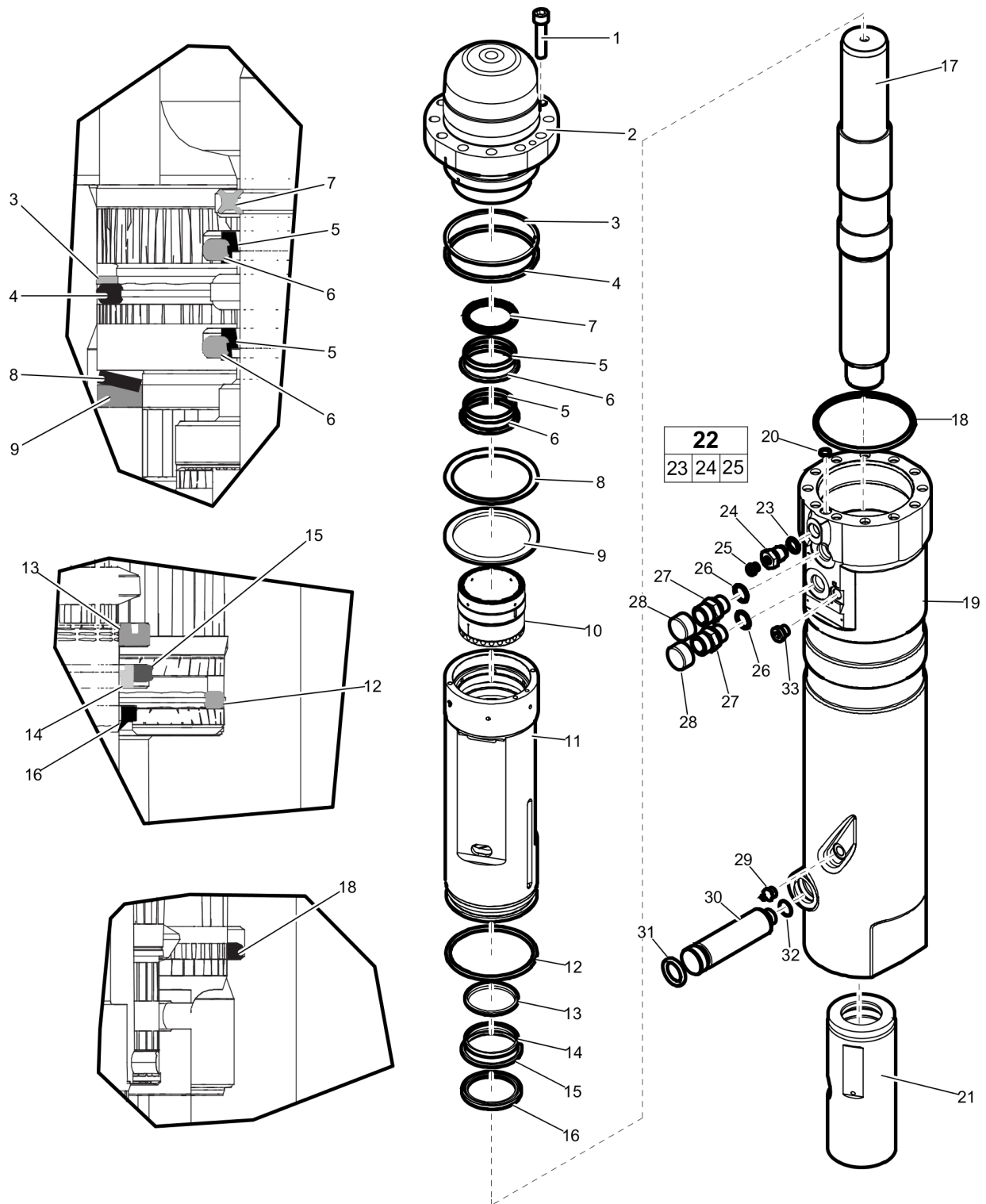
NO EXPLODED VIEW
AVAILABLE
FOR THIS BOM

Item	Part No.	Name	Qty	L
1	3315387100	Label kit	1	
Not Shown	-	Safety label	1	
Not Shown	-	Safety label	1	
Not Shown	-	Grease label	1	

Service, repair and wear part kits Seal kit

Item	Part No.	Name	Qty	L
1	3382070008	Seal kit	1	
2	0663211949	O-ring, 26 x 6 mm	1	
3	0663925100	O-ring, 15.08x2.62	1	
4	3115329002	Seal, SRC 8 x 14 x 2.4 mm	1	
5	3315296615	Seal, ø118 mm	2	
6	3360478426	Threaded plug	1	
7	3363091709	O-ring, 104.14 x 5.33 mm	1	
8	3361192031	Quadring, 56.69 x 5.33 mm	1	
9	3361192032	Seal	2	
10	3361192033	O-ring, 62.87 x 5.33 mm	2	
11	3361192035	O-ring, 107.32 x 5.33 mm	1	
12	3361192036	Back-up ring, 108.66 x 4.65 mm	1	
13	3361192038	Seal, 60 x 75.5 x 6.3 mm	1	
14	3361192039	Seal	1	
15	3361192040	O-ring, 66.04 x 5.33 mm	1	
16	3360192066	O-ring	1	
17	3361192067	O-ring	2	

Mechanical Spare parts list

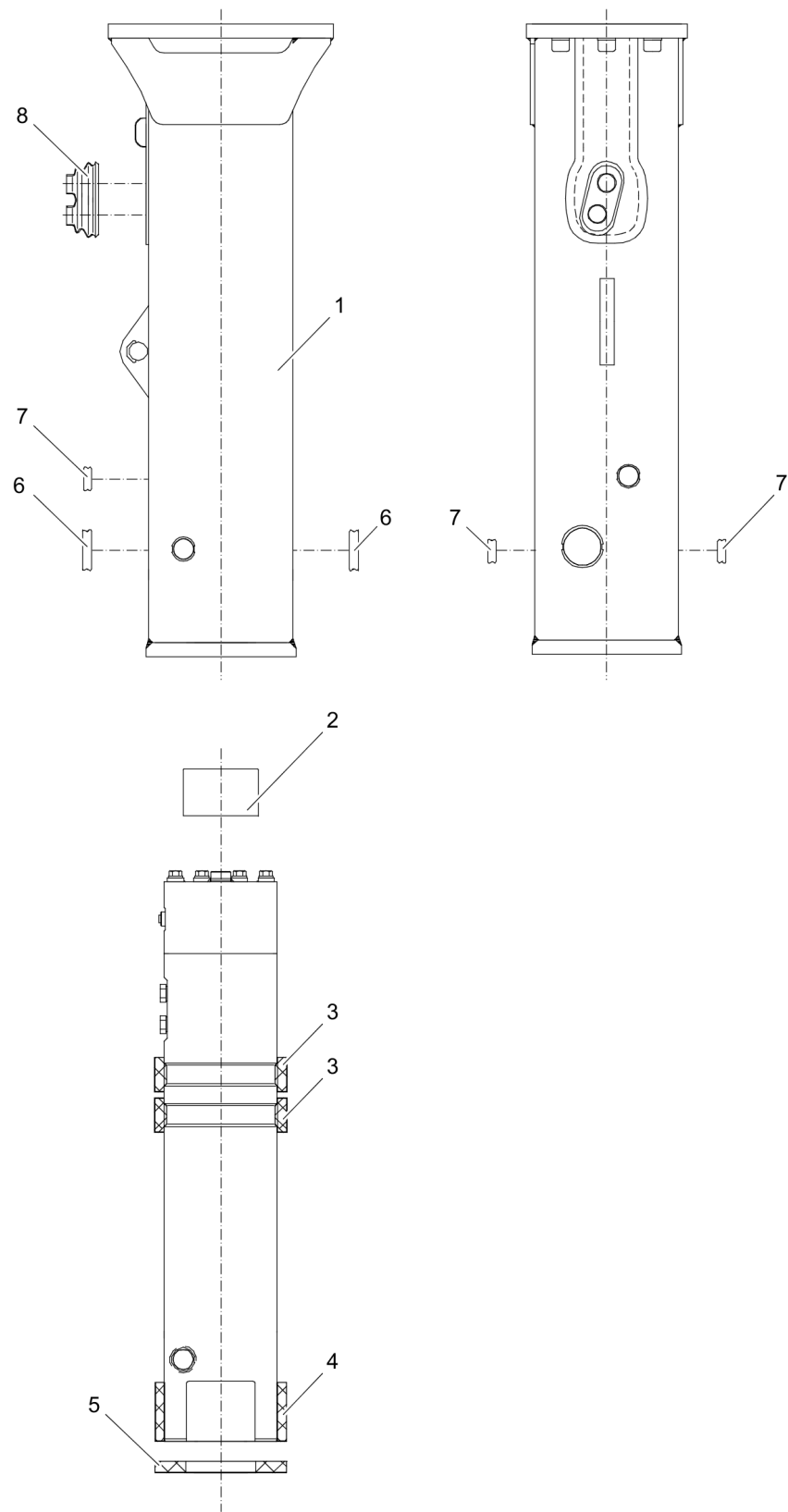


Refer to the Parts Online web page for most up-to-date information. The printed information might be outdated.

Item	Part No.	Name	Qty	L
1	3315431100	MC6S M12x55 8.8 g627	12	
2	3315416500	Back head	1	
3	3361192036	Back-up ring, 108.66 x 4.65 mm	1	
4	3361192035	O-ring, 107.32 x 5.33 mm	1	
5	3361192032	Seal	2	
6	3361192033	O-ring, 62.87 x 5.33 mm	2	
7	3361192031	Quadrang, 56.69 x 5.33 mm	1	
8	3361130004	Plate spring	1	
9	3361130005	Spacer	1	
10	3361130106	Control valve	1	
11	3361130002	Cylinder bush	1	
12	3361192005	O-ring, 104.14 x 5.33 mm	1	
13	3361192041	Wiper, 60 x 68 x 4 x 7 mm	1	
14	3361192039	Seal	1	
15	3361192040	O-ring, 66.04 x 5.33 mm	1	
16	3361192038	Seal, 60 x 75.5 x 6.3 mm	1	
17	3315332700	Piston	1	
18	3315296615	Seal, ø118 mm	1	
19	3315429500	Cylinder housing	1	
20	3115329002	Seal, SRC 8 x 14 x 2.4 mm	1	
21	3361130009	Wear bush	1	
22	3363087286	Filling valve complete	1	
23	0663925100	O-ring, 15.08x2.62	1	
24	3362264245	Filling valve	1	
25	3360478426	Threaded plug	1	
26	3361192067	O-ring	2	
27	3361031476	Nipple	2	
28	3361353486	Cap	2	
29	0544215300	Grease nipple, ISO 7-R 1/4	1	
30	3315429510	Retainer	1	
31	0663212006	O-ring, 26 x 6 mm	1	
32	3361192066	O-ring, 16.36x2.21	1	
33	3363066963	Plug, M14 x 1.5 mm	1	

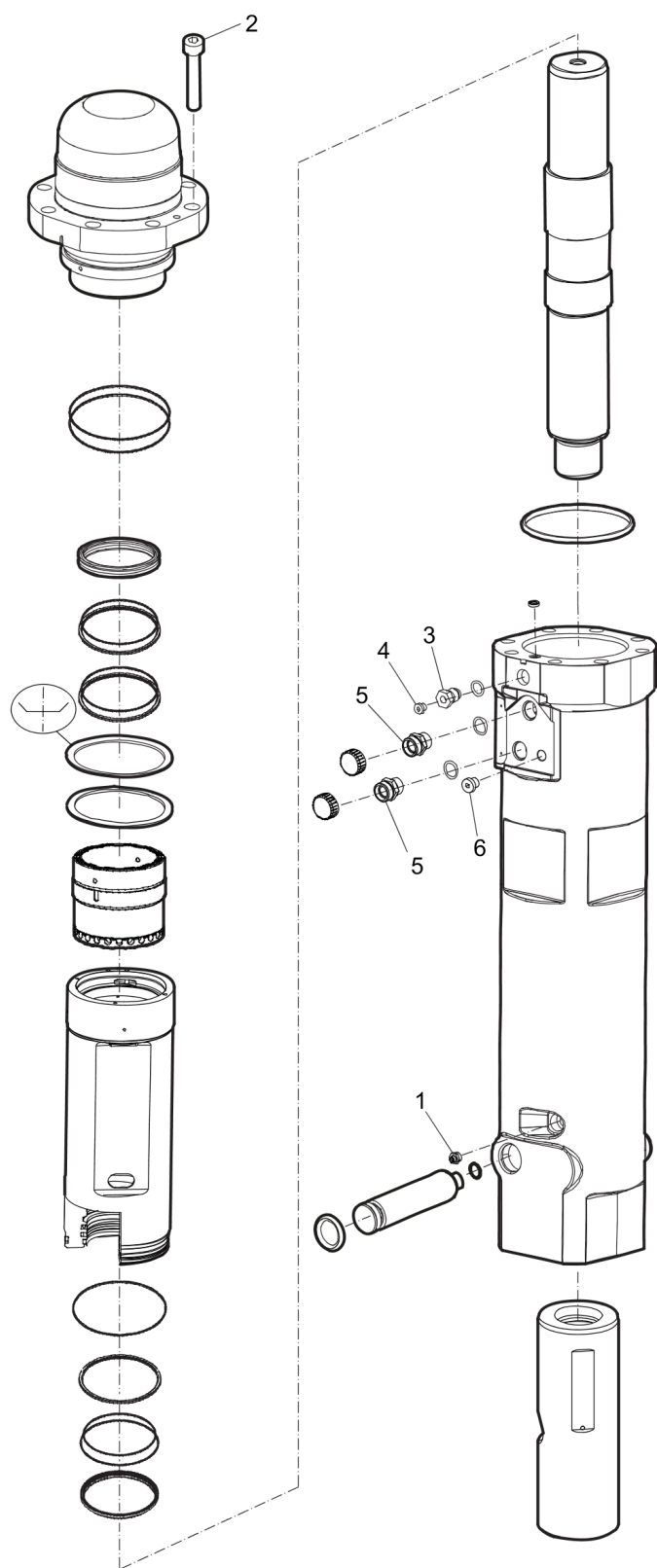
Refer to the Parts Online web page for most up-to-date information. The printed information might be outdated.

Mechanical Hydraulic breaker

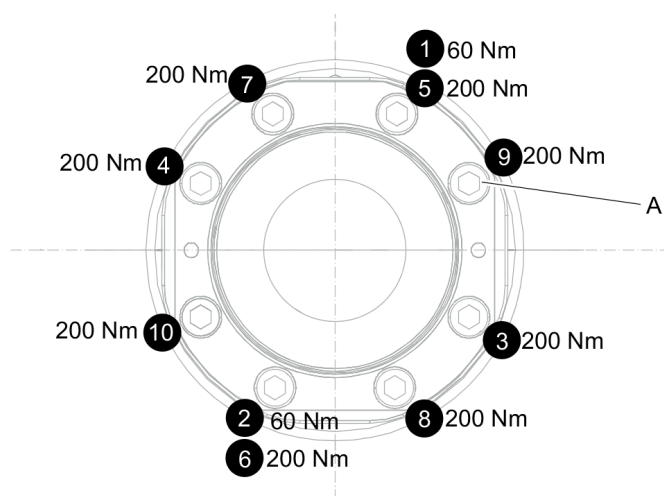
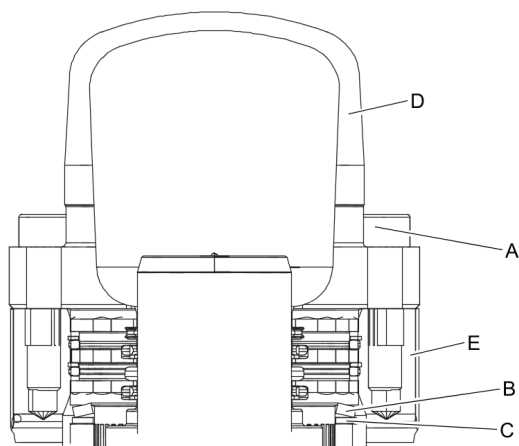


Item	Part No.	Name	Qty	L
1	3362130002	Breaker box	1	
2	3362491005	Elastic pad	1	
3	3362430003	Guide plate	2	
4	3362430002	Guide plate	1	
5	3362430001	Shock absorber	1	
6	3362491007	Plug	2	
7	3362491004	Plug	3	
8	3362491006	Cover	1	

Mechanical Tightening torques



Item	Part No.	Name	Qty	L
1	-	Grease nipple, 20 Nm	-	
2	-	Screw, 60 Nm/200 Nm, see "Assembly instruction"	-	
3	-	Filling valve, 130 Nm	-	
4	-	Threaded plug, 20 Nm	-	
5	-	Fitting, 90 Nm	-	
6	-	Plug, 30 Nm	-	

Mechanical Assembly instruction

1. Make sure the spring plate (B) and spacer (C) are centered before mounting the back head (D).
2. Press the back head (D) down on the spring plate (B) and spacer (C).
3. Grease the screws (A) with Molykote® 1000 (Molykote is a registered trademark of Dow Corning Corporation), and manually fit them on the back head (D)
4. Torque the first two screws (A) in the order shown in picture above to 60 Nm. This will compress the spring plate (B), and fit the back head (D) into the cylinder housing (E). Torque the rest of screws (A) in the order shown in picture above to 200 Nm.

NOTICE Always start by fitting screws by hands.

NOTICE Tighten in two stages.

Stage 1: 60 Nm

Stage 2: 200 Nm

This page intentionally left blank

This page intentionally left blank

Options/accessories Optional equipment

NO EXPLODED VIEW
AVAILABLE
FOR THIS BOM

Item	Part No.	Name	Qty	L
-	3363094913	Chisel paste cartridge for grease gun, 12 x 400 g (0.88 lbs)	1	A
-	0909107100	Grease gun for 400 g cartridge	1	
-	3363491004	Charging box with nitrogen cylinder, 2 l, 0.43 gal (0.53 US gal)	1	
-	3315303700	Test gauge wear bush	1	

Options/accessories Hydraulic hoses

NO EXPLODED VIEW
AVAILABLE
FOR THIS BOM

Item	Part No.	Name	Qty	L
-	3363491002	Hose, both ends 18 L(M26x1.5) length 1500 mm	2	