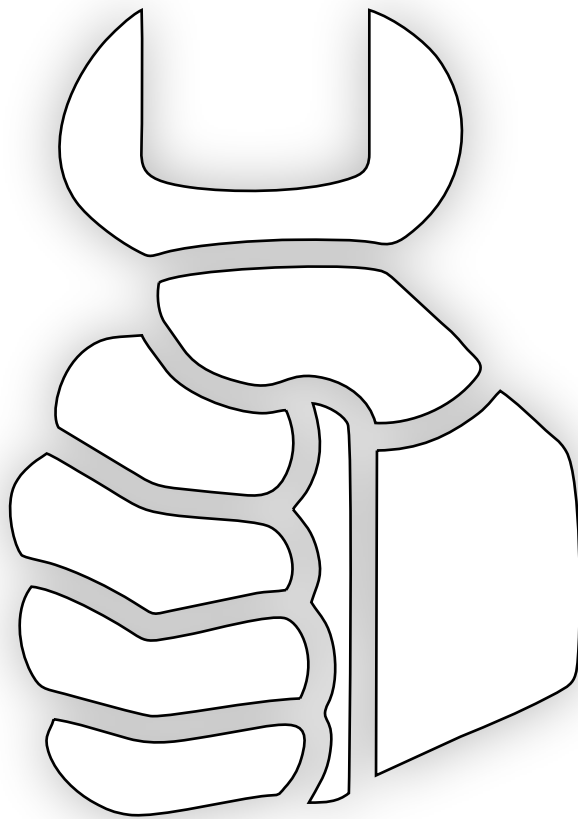


Parts online

Spare parts list



Contents

Service, repair and wear part kits

Seal kit	1
Label kit	3

Mechanical

Percussion unit	5
Hydraulic breaker	7
Label	9
Tightening torque	11
Dimensions RX 3	13

Options/accessories

Working tools RX 3	14
Hydraulic hoses	17
Optional equipment	19

Service, repair and wear part kits Seal kit

NO EXPLODED VIEW
AVAILABLE
FOR THIS BOM

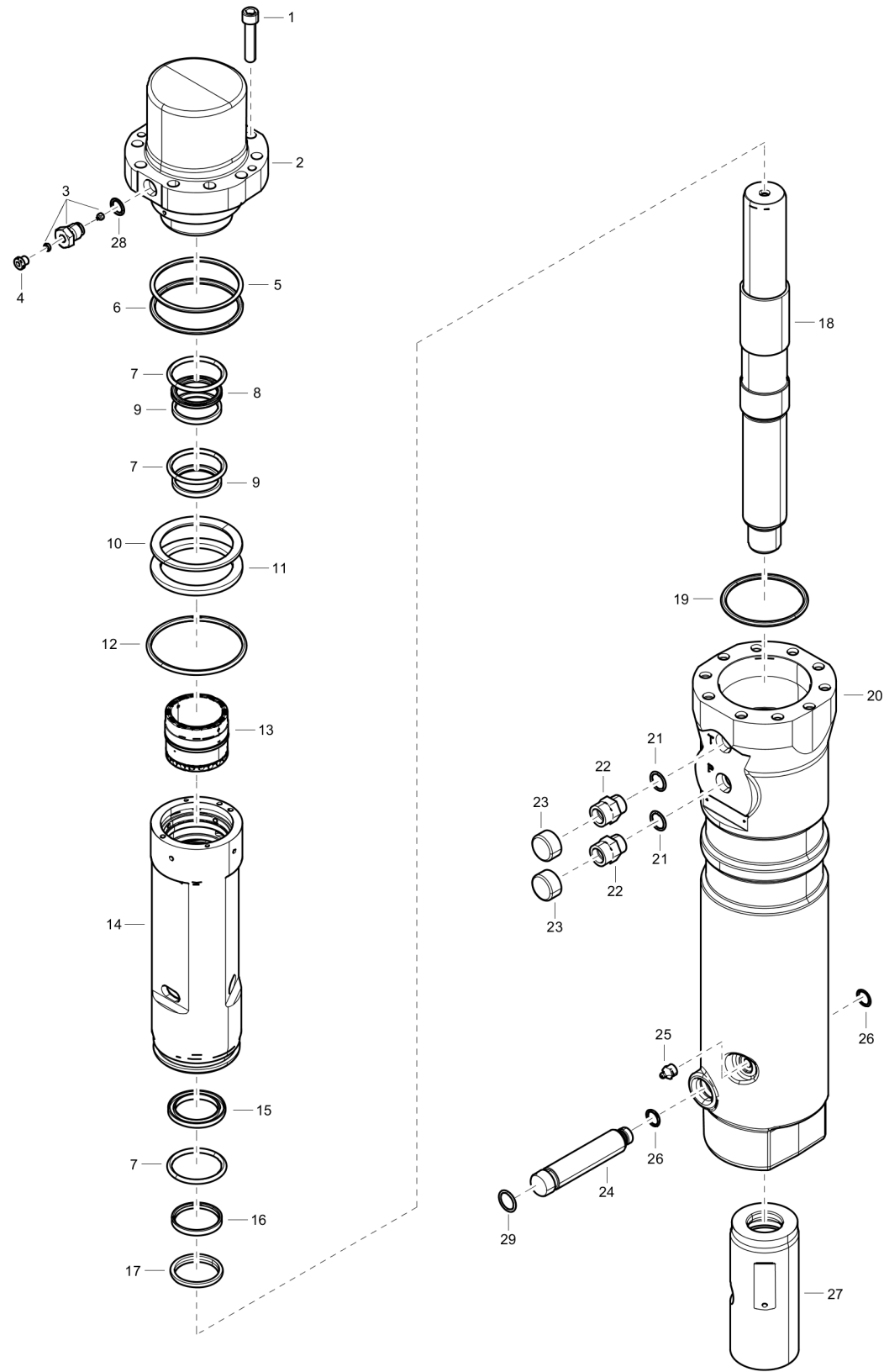
Item	Part No.	Name	Qty	L
1	3361120011	Seal kit	1	
Not Shown	-	O-ring	1	
Not Shown	-	Threaded plug	1	
Not Shown	-	Seal, 47 x 5.33 mm, 1.85 x 0.21 in.	1	
Not Shown	-	Seal	2	
Not Shown	-	O-ring, 56.52 x 5.33 mm, 2.23 x 0.21 in. (70 shore)	3	
Not Shown	-	O-ring, 69.22 x 5.33 mm , 2.73 x 0.21 in. (90 shore)	1	
Not Shown	-	Back-up ring, 70.31 x 4.65 mm , 2.77 x 0.18 in. (90 shore)	1	
Not Shown	-	O-ring, 94.62 x 5.33 mm , 3.72 x 0.21 in. (90 shore)	1	
Not Shown	-	Back-up ring, 94.83 x 4.65 mm , 3.73 x 0.18 in. (90 shore)	1	
Not Shown	-	Seal, Ø 104 mm, Ø 4.09 in	1	
Not Shown	-	O-ring, 88.25 x 5.33 mm , 3.47 x 0.21 in. (90 shore)	1	
Not Shown	-	Seal, 50 x 65.5 x 6 mm, 1.97 x 2.58 x 0.24 in.	1	
Not Shown	-	Seal	1	
Not Shown	-	Wiper of actuating cylinder	1	
Not Shown	-	O-ring, 19.18 x 2.46 mm , 0.76 x 0.10 in. (70 shore)	2	

Service, repair and wear part kits Label kit

NO EXPLODED VIEW
AVAILABLE
FOR THIS BOM

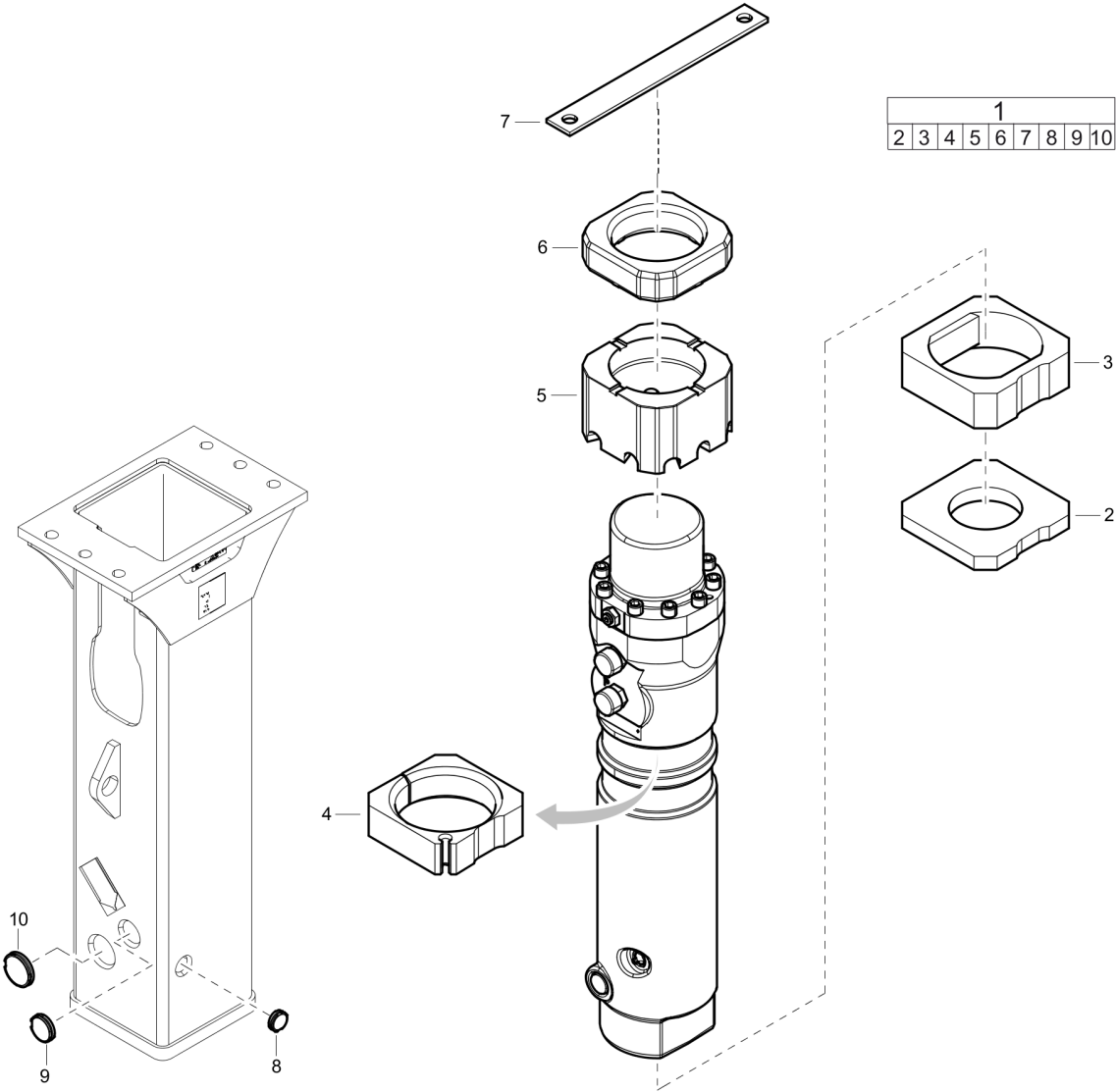
Item	Part No.	Name	Qty	L
1	3315385790	Label kit	1	

Mechanical Percussion unit



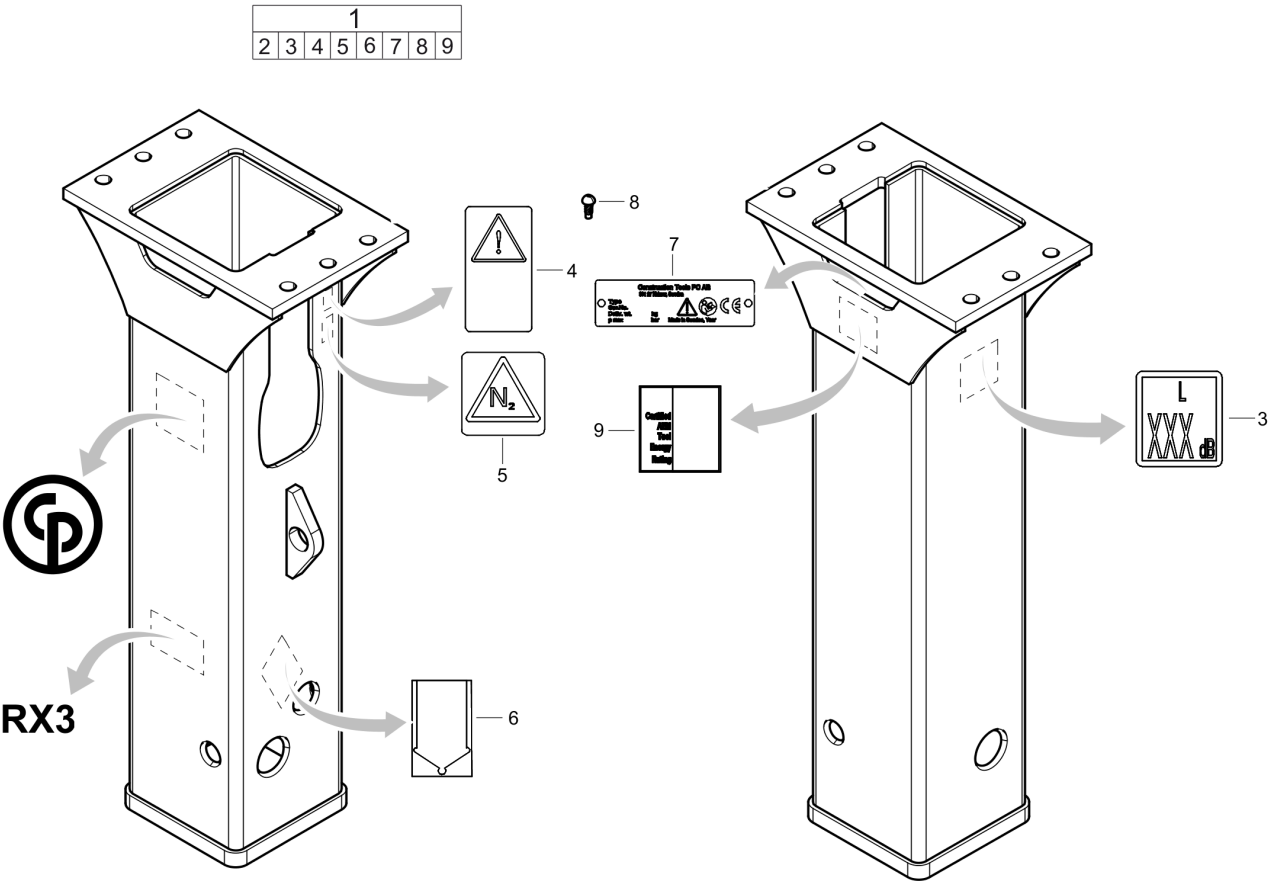
Item	Part No.	Name	Qty	L
-	3315429780	Percussion unit	1	
1	3315431100	MC6S M12x55 8.8 g627	10	
2	3315429600	Backhead	1	
3	3363087286	Filling valve complete	1	
4	3360478426	Threaded plug	1	
28	0663925100	O-ring, 15.08x2.62	1	
5	3361192021	Backup ring, 95	1	
6	3361192020	O-ring, 94.62x5.33	1	
7	3361192044	O-ring, 56.25x5.33	3	
8	3361192042	Quadring	1	
9	3361192043	Stepseal	2	
10	3361120004	Plate spring	1	
11	3361120005	Spacer	1	
12	3315296610	Sealing	1	
13	3361120106	Control valve	1	
14	3361120002	Cylinder body	1	
15	3361192049	Sealing	1	
16	3361192050	Stepseal	1	
17	3361192051	Wiper	1	
18	3315332600	Piston	1	
19	3361192047	O-ring, 88.25x5.33	1	
20	3315429700	Cylinder housing	1	
21	3361192067	O-ring	2	
22	3361031476	Nipple	2	
23	3361353486	Cap	2	
24	3315429800	Retainer	1	
25	0544215300	Grease nipple, ISO 7-R 1/4	1	
26	3361192066	O-ring, 16.36x2.21	2	
27	3361120009	Wear bushing	1	
29	0663212111	O-RING 22X3,5	1	

Mechanical Hydraulic breaker



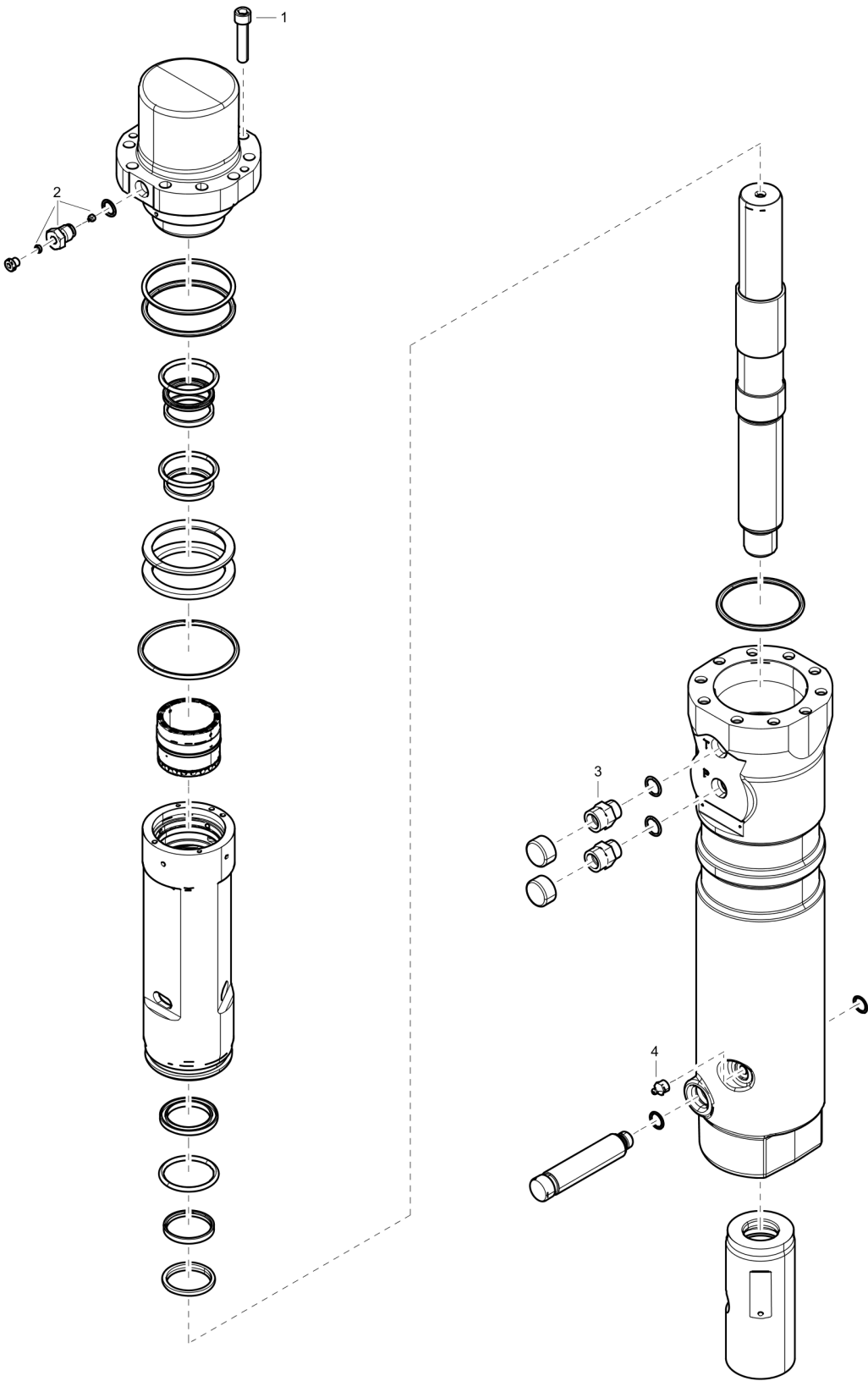
Item	Part No.	Name	Qty	L
1	3315432830	Hydraulic breaker RX3-II	1	
2	3362420001	Shock absorber	1	
3	3362420002	Guide plate	1	
4	3362420003	Guide plate	2	
5	3315431700	Spacer	1	
6	3315431600	Shock absorber	1	
7	3362491017	Retainer	1	
8	3362491015	Plug	2	
9	3362491014	Plug	1	
10	3362491013	Plug	2	

Mechanical Label



Item	Part No.	Name	Qty	L
1	3315416810	Painting and labeling	1	
3	-	Sound power label	1	
4	3115262900	Safety label	1	
5	3115263000	Safety label	1	
6	3360995411	Label - Lubricating symbol	1	
7	-	Data plate (Not available separately)	1	
8	244414400	Drive screw	2	
9	3315254600	AEM sign	1	

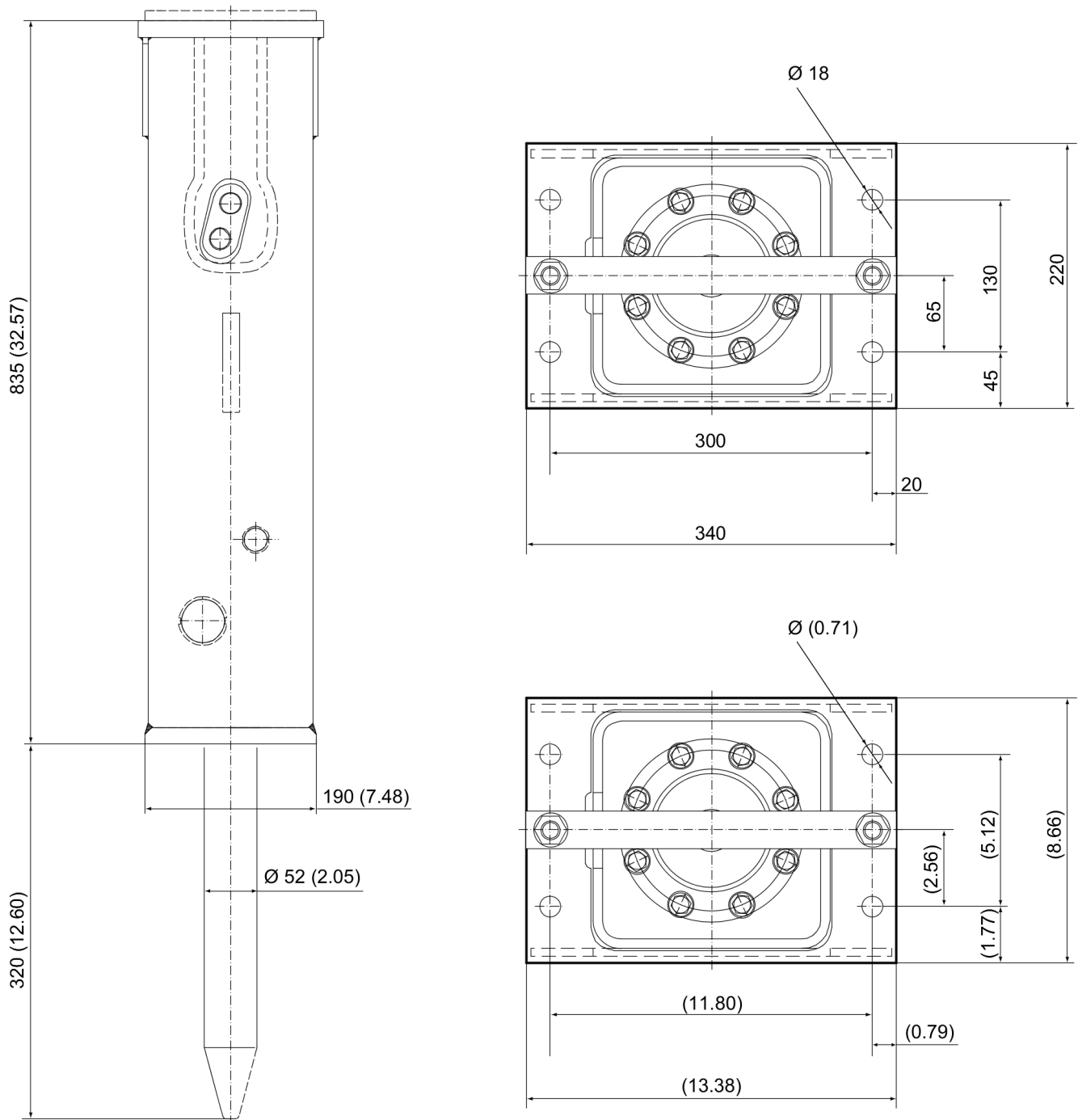
Mechanical Tightening torque



Refer to the Parts Online web page for most up-to-date information. The printed information might be outdated.

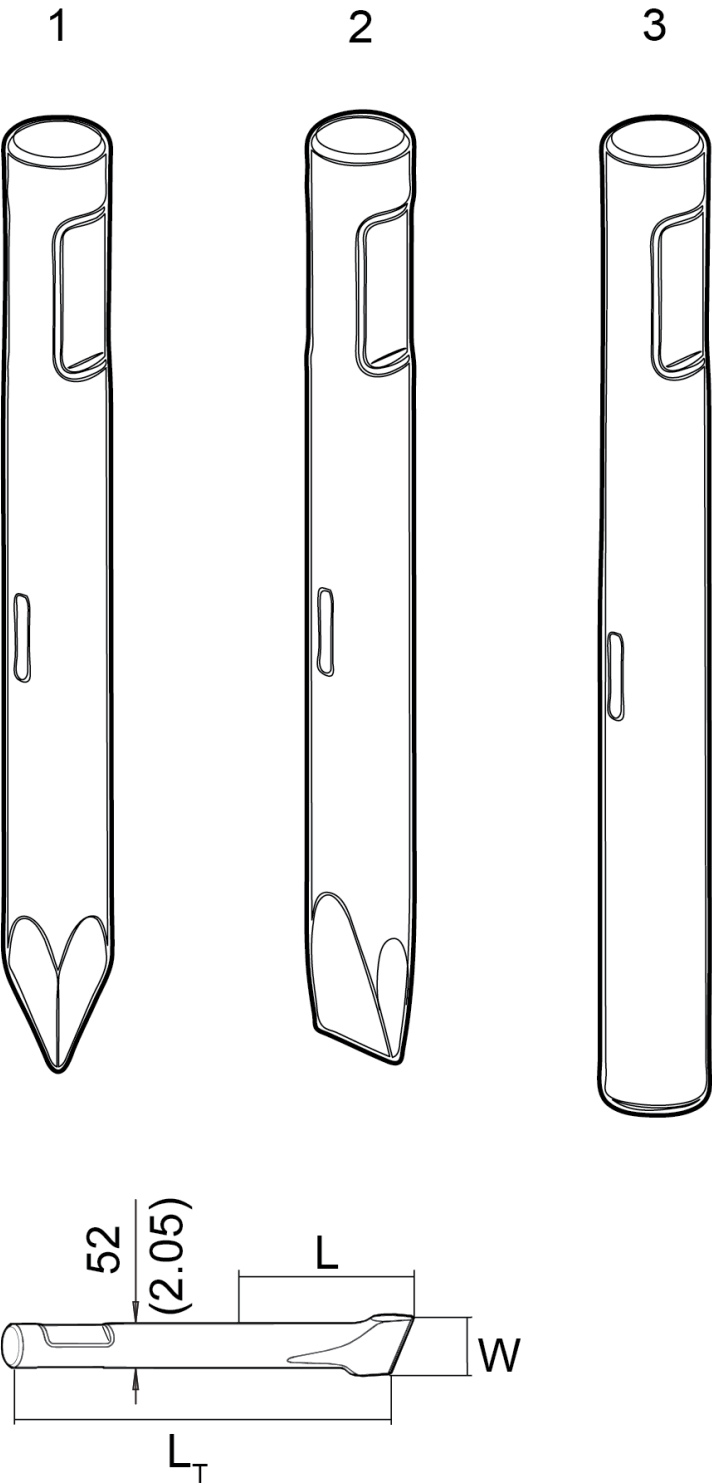
Item	Part No.	Name	Qty	L
1	-	Bolt, in production with new - 65 Nm	-	A
1	-	Bolt, in service with molycote- 78 Nm	-	
2	-	Filling valve- 130 Nm	-	
3	-	Nipple- 90 Nm	-	
4	-	Lubrication nipple- 20 Nm	-	

Mechanical Dimensions RX 3



This page intentionally left blank

Options/accessories Working tools RX 3



Item	Part No.	Name	Qty	L
1	4211105101	Moil point (conical)	1	A
2	4211105102	Chisel (cross)	1	B
3	4211105103	Blunt tool	1	C

Comments for Page: Working tools RX 3

(L)OCAL REMARKS

A | L=320 mm, LT=530 mm, Wt=8.0 kg

L=12.60 inch, LT=20.87 inch, Wt=17.6 lb

B | W= 52 mm, L=320 mm, LT=530 mm, Wt=8.3 kg

W=2.05 inch, L=12.60 inch, LT=20.87 inch, Wt=18.4 lb

C | L=320mm, LT=530 mm, Wt=8.6 kg

L=12.60 inch, LT=20.87 inch, Wt=19.0 lb

Options/accessories Hydraulic hoses

NO EXPLODED VIEW
AVAILABLE
FOR THIS BOM

Item	Part No.	Name	Qty	L
-	3363491002	Hose, both ends 18 L(M26x1.5) length 1500 mm	2	

Options/accessories Optional equipment

NO EXPLODED VIEW
AVAILABLE
FOR THIS BOM

Item	Part No.	Name	Qty	L
-	3363094910	Chisel paste cartridge for grease gun and CP-Lube, 30 x 500 g (1.1 lbs)	1	A
-	3363034567	Grease gun for 500 g cartridge	1	
-	3363491004	Charging box with nitrogen cylinder, 2 l, 0.43 gal (0.53 US gal)	1	
-	3315303700	Test gauge wear bush	1	
Not Shown	-	Adapter plate matching the carrier	1	B
-	3362269303	Base plate	1	
-	3363106507	Bolt kit	1	
-	3360209251	Allen key	1	C
-	3360430655	Open end spanner (24/27 mm)	1	D

Comments for Page: Optional equipment

(L)OCAL REMARKS

A | 500 g (1.1 lbs)

(carton of 30 pieces)

B | Consult the Chicago Pneumatic Customer Center/Dealer in your area.

C | 12 mm for bolt kit

D | size 24/27 for bolt kit