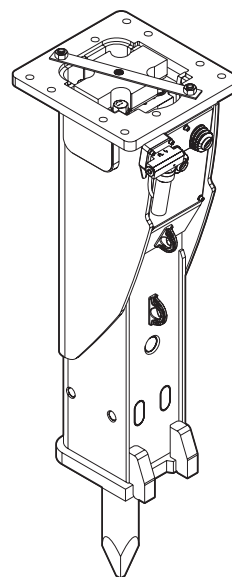


Spare parts list

Hydraulic breakers

RX 30

	Valid from serial number	Valid to serial number
RX 30	DEQ121453	



General information

This spare parts list applies to the following:

Part number	Description
3363116814	Hydraulic breaker RX 30 with CP-Lube

Use only authorized parts. Any damage or malfunction caused by the use of unauthorized parts is not covered by Warranty or Product Liability. Any unauthorized use or copying of the contents or any part thereof is prohibited. This applies in particular to trademarks, model denominations, part numbers, and drawings.

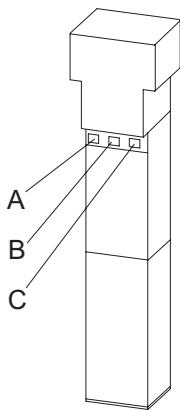
Instructions for use

This spare parts list contains no safety regulations and is merely intended to assist in the ordering of spare parts. For information about operating, servicing, or repairing, the relevant Safety and operating instructions must be consulted at all costs. Please observe the safety instructions listed in the relevant Safety and operating instructions!

Instructions for ordering

It is essential to indicate the serial number of the hydraulic attachment when ordering spare parts! Please note the full identification number of your hydraulic attachment. The code can be found on the cylinder. Determine the quantity of individual parts which are required and need to be ordered. The order must indicate the following details:

- full identification code of the hydraulic attachment
- required quantity
- part number
- description



- A. Cylinder number
- B. Type
- C. Serial number

Contents

Service, repair and wear part kits

Kit list	4
----------	---

Mechanical

Hydraulic breaker	7
Percussion unit part 1: cylinder cover	10
Percussion unit part 2: cylinder	13
Percussion unit part 3: lower breaker part	16
Automatic lubrication system kit	18
Tightening torques	20
Dimensions	23

Options / accessories

Hydraulic hoses	25
Optional equipment	28
Working tools	30

Service, repair and wear part kits Kit list

NO EXPLODED VIEW
AVAILABLE
FOR THIS BOM

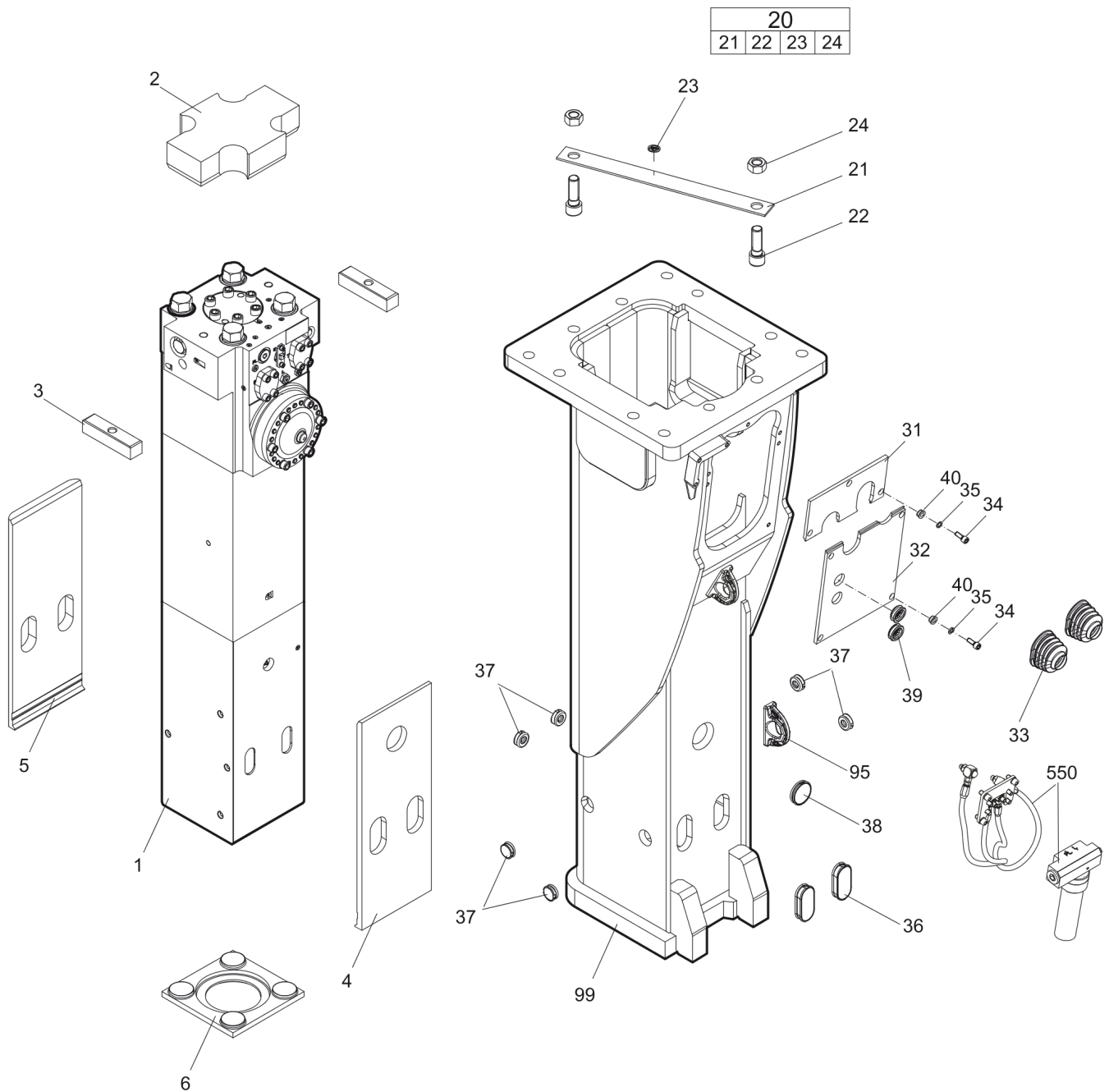
Item	Part No.	Name	Qty	L
KIT	3363112844	Label kit	1	
KIT	3363112842	Seal kit	1	
.104	3360314375	O-ring	1	
.105	3360314656	O-ring	1	
.108	3363112659	O-ring	1	
.109	3361031990	O-ring	1	
.111	3361031912	O-ring	1	
.112	3361850529	Back-up ring	1	
.151	3360314372	O-ring	2	
.162	3360478171	O-ring	1	
.182	3360478426	Threaded plug	1	
.183	3360175125	O-ring	1	
.201	3361855099	Seal	1	
.204	3363112705	Seal	1	
.290(291-292)	3363083589	Seal kit	1	
..291		Back-up ring	1	
..292		Seal	1	
.301	3361031950	O-ring	1	
.302	3363083669	Wiper	1	
.305	3362267281	Seal	8	
.306	3362267585	Seal	5	
.307	3362267582	Seal	2	
.390(391-392)	3363083590	Seal kit	1	
..391		Seal	1	
..392		Back-up ring	1	
.411	3360478097	O-ring	1	
KIT	3363091732	Seal kit for swivel joint for automatic lubrication system	1	
KIT	3363098088	Fastening screw kit	1	
.113	3361333703	Lock washer	6	
.114	3363070490	Fastening screw	6	
.158	3361031989	Threaded insert	6	
KIT	3363089849	Accumulator repair kit	1	
-	3362261647	Diaphragm	1	
-	3360332259	Filling screw	1	
-	3360314460	O-ring	1	
-	3361335025	Protective cap	1	
-	3361031912	O-ring	1	

Refer to Parts Online for the most up to date information. The printed information might be outdated.

Thu Jan 29 03:25:28 MST 2015

Item	Part No.	Name	Qty	L
.-	3361850529	Back-up ring	1	

This page intentionally left blank

Mechanical Hydraulic breaker

Refer to Parts Online for the most up to date information. The printed information might be outdated.

Thu Jan 29 03:25:29 MST 2015

Item	Part No.	Name	Qty	L
1		Percussion unit	1	A
2	3363 1058 35	Elastic pad	1	
3	3363 1058 37	Shock absorber	2	
4	3363 1058 39	Guide plate	1	
5	3363 1058 41	Guide plate	1	
6	3363 1058 45	Plate	1	
20	3363 0833 43	Transport safety device complete	1	
.21		Transport safety device	1	
.22	3360 0268 83	Allen screw	2	
.23	3363 0918 72	Label transport safety device	1	
.24	3360 1032 54	Nut	2	
31	3363 1113 94	Plate	1	B
32	3363 1113 97	Plate	1	C
33	3363 1051 39	Cover	2	
34	3360 1037 51	Allen screw	7	
35	3361 8505 96	Pair of lock washers	7	
36	3363 0860 11	Plug	2	
37	3363 0860 15	Plug	6	
38	3362 2678 93	Plug	1	
39	3363 1059 87	Plug	2	
40	3363 1112 71	Sleeve	7	
95	3363 1119 94	Lifting eye	2	D
99	3363 1124 18	Breaker box	1	E
550	3363 1114 90	Automatic lubrication system kit	1	A

Comments for Page: Hydraulic breaker

(L)OCAL REMARKS

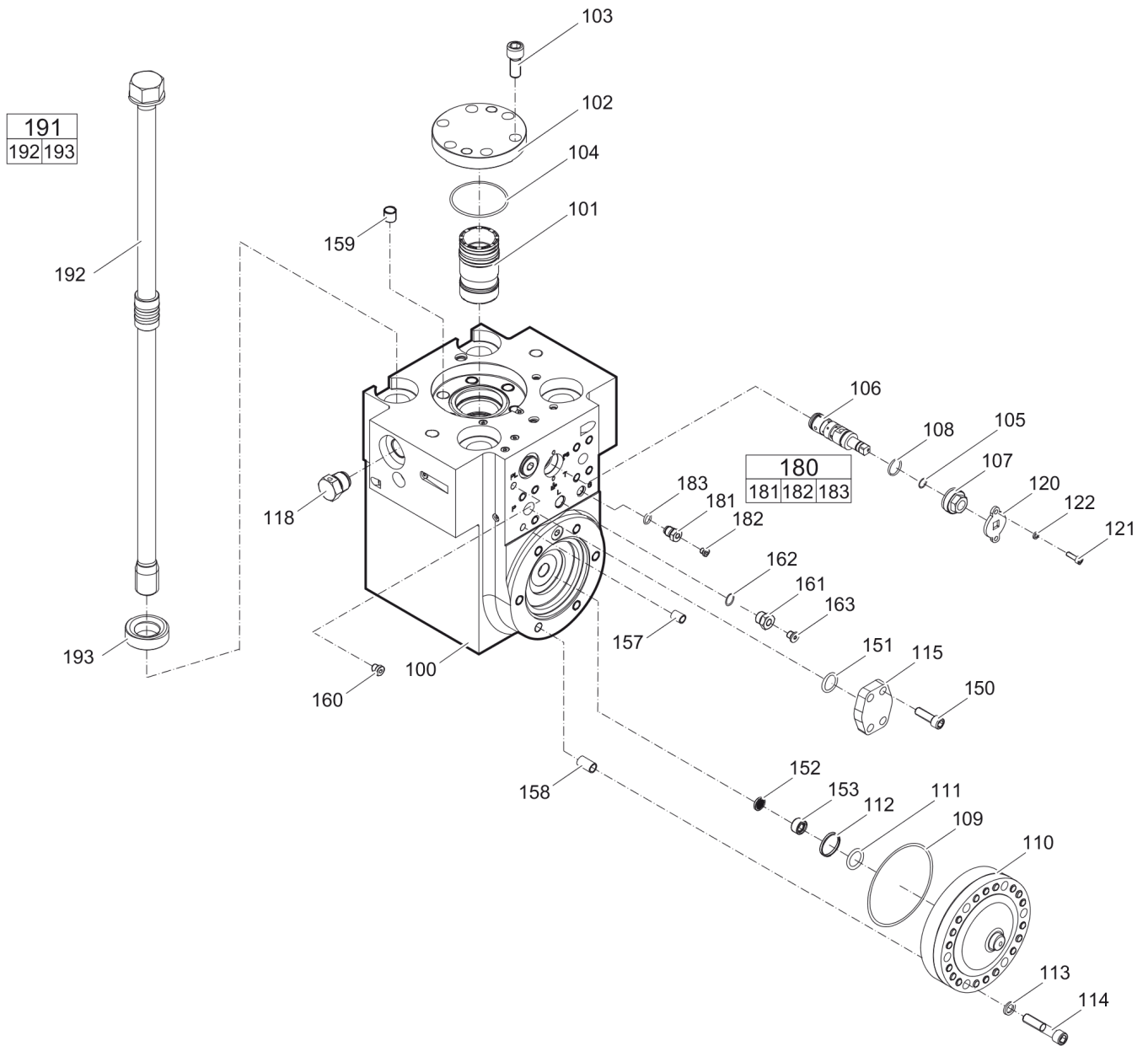
A | see separate chapter

B | with 3 times item 40

C | with 4 times item 40

D | professional welding process necessary

E | with item 95

Mechanical Percussion unit part 1: cylinder cover

Refer to Parts Online for the most up to date information. The printed information might be outdated.

Thu Jan 29 03:25:30 MST 2015

Item	Part No.	Name	Qty	L
100	3363112739	Cylinder cover	1	A
101	3363035439	Main control valve	1	
102	3361331555	Cover	1	
103	3360103776	Allen screw	6	
104	3360314375	O-ring	1	
105	3360314656	O-ring	1	
106	3363113244	Valve	1	
107	3363113246	Threaded plug	1	
108	3363112659	O-ring	1	
109	3361031990	O-ring	1	
110	3363069585	HP-accumulator	1	
111	3361031912	O-ring	1	
112	3361850529	Back-up ring	1	
113	3361333703	Lock washer	6	
114	3363070490	Fastening screw	6	
115	3363034041	Blind flange	2	
118	3361854511	Non-return valve	1	
120	3363113243	Plate	1	
121	3360103735	Allen screw	2	
122	3361850743	Pair of lock washers	2	
150	3363034274	Allen screw	8	
151	3360314372	O-ring	2	
152	3361844113	Strainer disk	1	
153	3361844115	Threaded plug	1	
157	3361031946	Threaded insert	8	
158	3361031989	Threaded insert	6	
159	3361031529	Threaded insert	6	
160	3363066963	Plug, M14 x 1.5 mm	1	
161	3361854657	Connecting screw	1	
162	3360478171	O-ring	1	
163	3360478439	Threaded plug	1	
180(181-183)	3363087286	Filling valve complete	1	
.181		Filling valve	1	
.182	3360478426	Threaded plug	1	
.183	3360175125	O-ring	1	
191(192-193)	3363106905	Tensioning bolt complete	4	
.192		Tensioning bolt	1	

Refer to Parts Online for the most up to date information. The printed information might be outdated.

Thu Jan 29 03:25:30 MST 2015

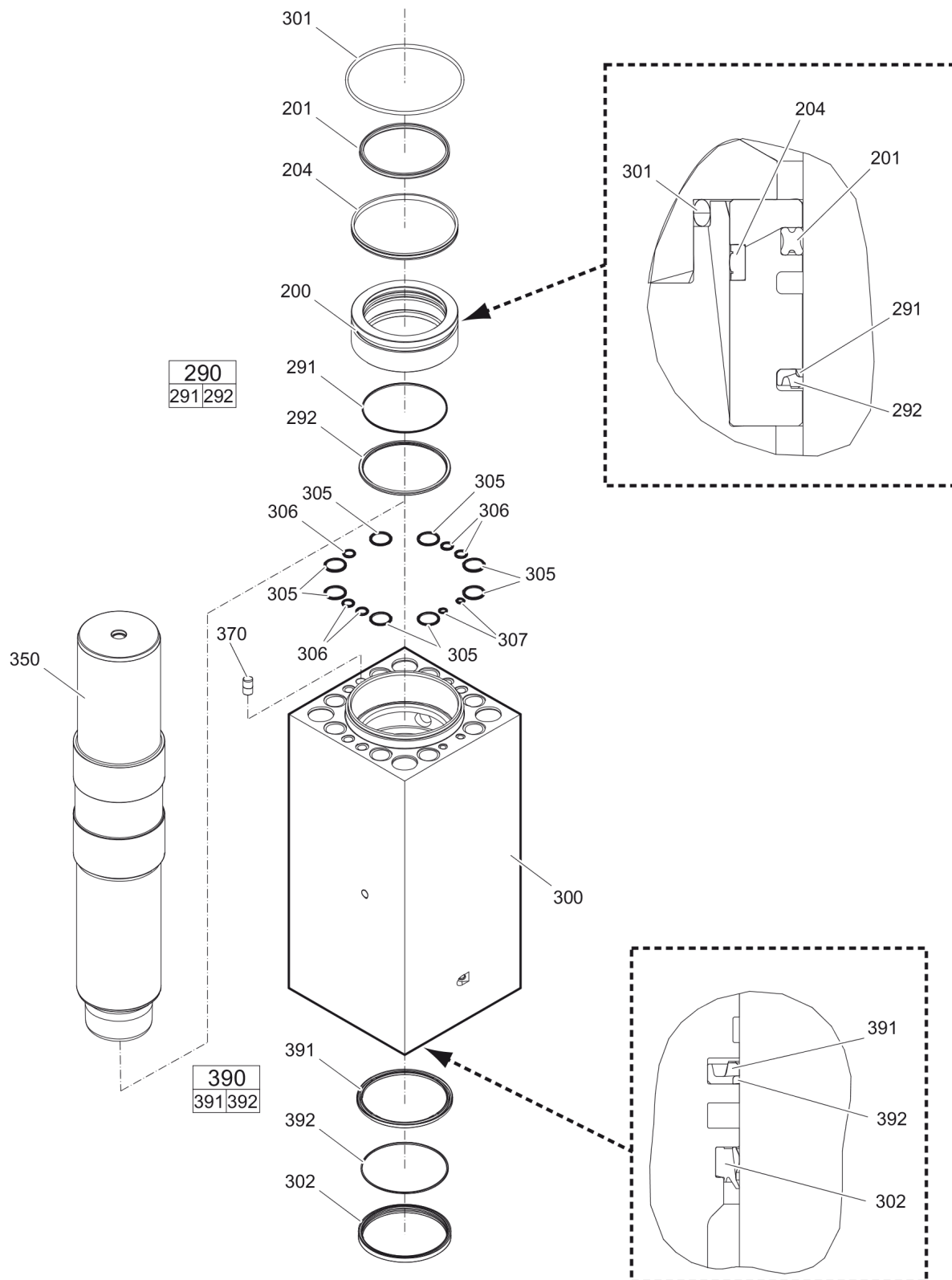
Item	Part No.	Name	Qty	L
.193	3363093649	Washer	1	

Comments for Page: Percussion unit part 1: cylinder cover

(L)OCAL REMARKS

A | with item 152 - 163

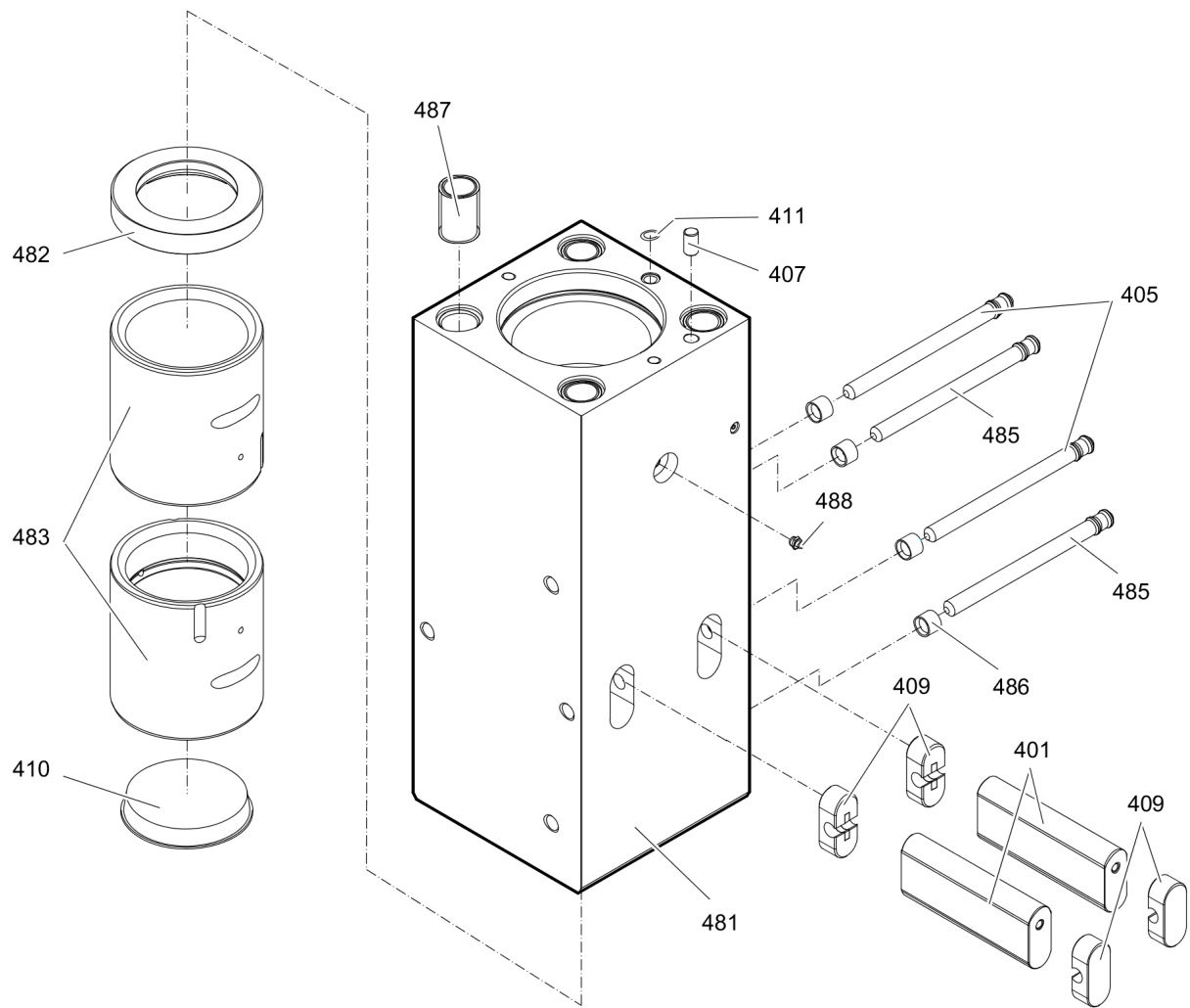
This page intentionally left blank

Mechanical Percussion unit part 2: cylinder

Item	Part No.	Name	Qty	L
200	3363112392	Seal flange	1	
201	3361855099	Seal	1	
204	3363112705	Seal	1	
290(291-292)	3363083589	Seal kit	1	
.291		Back-up ring	1	
.292		Seal	1	
300	3363112528	Cylinder	1	
301	3361031950	O-ring	1	
302	3363083669	Wiper	1	
305	3362267281	Seal	8	
306	3362267585	Seal	5	
307	3362267582	Seal	2	
350	3363112401	Percussion piston	1	
370	3362268185	Lock pin	1	
390(391-392)	3363083590	Seal kit	1	
.391		Seal	1	
.392		Back-up ring	1	

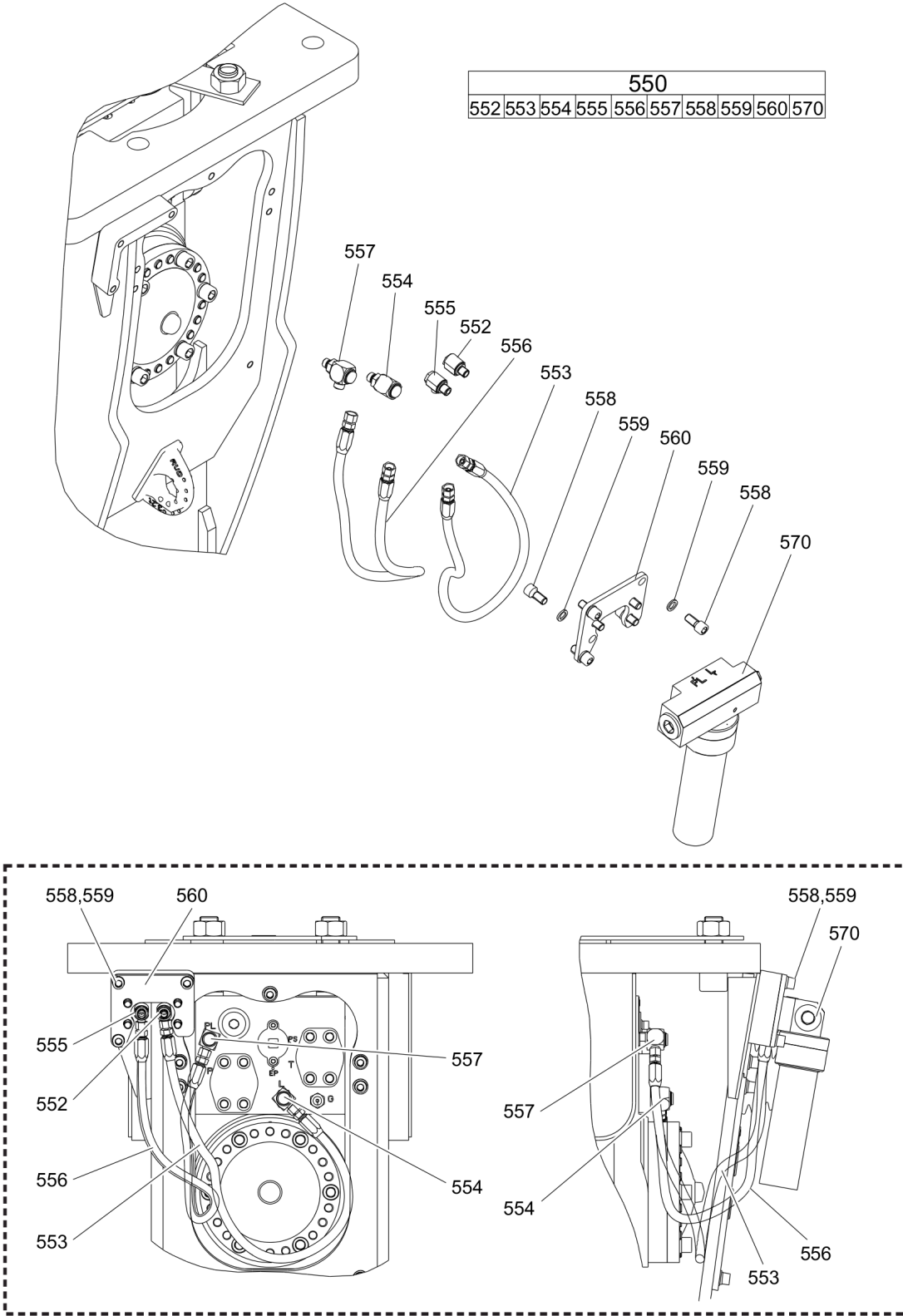
Mechanical Percussion unit part 3: lower breaker part

480							
481	482	483	485	486	487	488	



Item	Part No.	Name	Qty	L
401	3360981927	Retainer bar	2	
405	3361854347	Bolt	2	
407	3362261705	Lock pin	1	
409	3362262925	Plug	4	
410	3360995340	Protective cap	1	
411	3360478097	O-ring	1	
480(481-488)	3363106627	Lower breaker part complete	1	
.481		Lower breaker part	1	
.482	3363069079	Impact ring	1	
.483	3363105553	Wear bush	2	
.485	3361854347	Bolt	2	
.486	3361854363	Locking bush	4	
.487	3363085379	Threaded insert	4	
.488	3360433774	Grease nipple	1	

Mechanical Automatic lubrication system kit



Item	Part No.	Name	Qty	L
550(552-570)	3363 1114 90	Automatic lubrication system kit	1	
.552	3363 0662 33	Fitting	1	A
.553	3363 0838 73	Hydraulic hose	1	B
.554	3363 0871 86	Fitting	1	C
.555	3363 0662 34	Fitting	1	D
.556	3363 0873 94	Hydraulic hose	1	E
.557	3363 0871 85	Fitting	1	F
.558	3360 1037 50	Allen screw	7	G
.559	3361 8505 96	Pair of lock washers	7	
.560	3363 1104 11	Support	1	
.570	3363 1105 30	Automatic lubrication system	1	H

Comments for Page: Automatic lubrication system kit

(L)OCAL REMARKS

A | secure with Loctite 243

B | Grease line

secure with Loctite 243

Route the hydraulic hoses as shown on the drawing. It must be ensured that the hydraulic hoses can move freely and are not in contact at any point.

C | secure with Loctite 243

D | secure with Loctite 243

E | Oil line

secure with Loctite 243

Route the hydraulic hoses as shown on the drawing. It must be ensured that the hydraulic hoses can move freely and are not in contact at any point.

F | secure with Loctite 243

G | secure all 4 Allen screws with Loctite 243 screwed in the CP-Lube

H | CP-Lube

Mechanical Tightening torques

NO EXPLODED VIEW
AVAILABLE
FOR THIS BOM

Item	Part No.	Name	Qty	L
22	-	Allen screw - 240 Nm		A
24	-	Nut - 240 Nm		B
34	-	Allen screw - 85 Nm		C
103	-	Allen screw - 380 Nm		D
107	-	Threaded plug - 300 Nm		E
114	-	Allen screw - 350 Nm		F
118	-	Non-return valve - 200 Nm		G
121	-	Allen screw - 20 Nm		H
150	-	Allen screw - 130 Nm		I
181	-	Filling valve - 130 Nm		J
182	-	Threaded plug - 20 Nm		K
192	-	Tensioning bolt		L
552	-	Fitting - 45 Nm		M
553	-	Hydraulic hose, grease line - 16 Nm		N
554	-	Fitting - 50 Nm		O
555	-	Fitting - 55 Nm		P
556	-	Hydraulic hose, oil line - 42 Nm		Q
557	-	Fitting - 60 Nm		R
558	-	Allen screw - 85 Nm		S

Comments for Page: Tightening torques

(L)OCAL REMARKS

A | Allen key size 22

B | Socket spanner size 46

C | Allen key size 10

D | Allen key size 17

E | Socket spanner size 30

F | Allen key size 14

G | Socket spanner size 41

H | Allen key size 6

I | Allen key size 12

J | Socket spanner size 22

K | Allen key size 5

L | Torque wrench or Power wrench size 55

1. Pretighten the tensioning bolts to 500 Nm, proceeding in a crosswise fashion,
2. then tighten each tensioning bolt through 120° (2 sides of hexagonal head) in a crosswise fashion,
3. finally tighten each tensioning bolt again through 120° (2 sides of hexagonal head) in a crosswise fashion.

M | Open-end wrench size 17, 19, 22

N | Open-end wrench size 17

O | Open-end wrench size 17, 22, 27

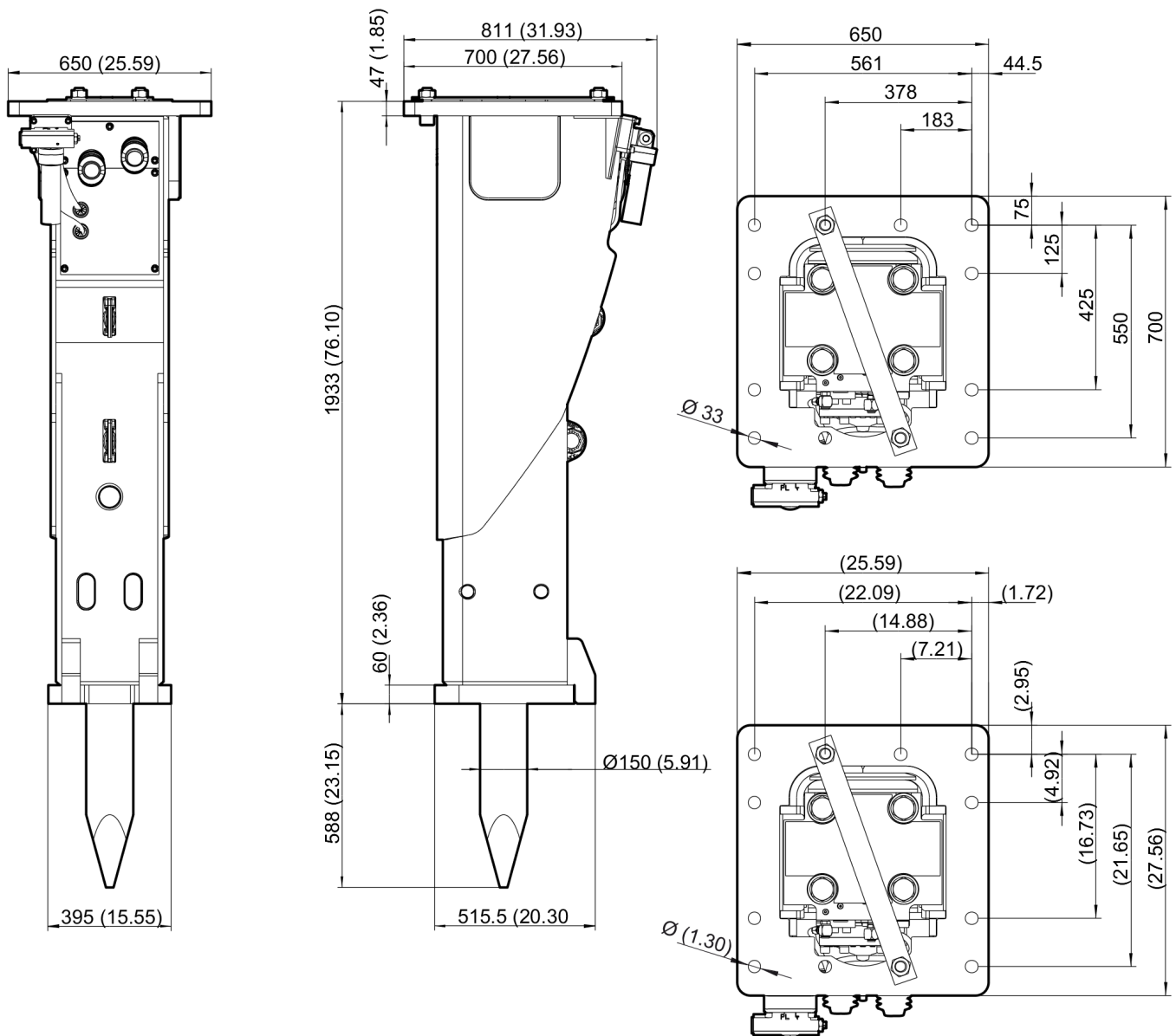
P | Open-end wrench size 19, 22

Q | Open-end wrench size 19

R | Open-end wrench size 19, 22, 27

S | Allen key size 10

This page intentionally left blank

Mechanical Dimensions

Refer to Parts Online for the most up to date information. The printed information might be outdated.

Thu Jan 29 03:25:33 MST 2015

This page intentionally left blank

Options / accessories Hydraulic hoses

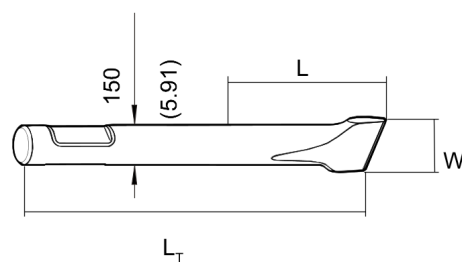
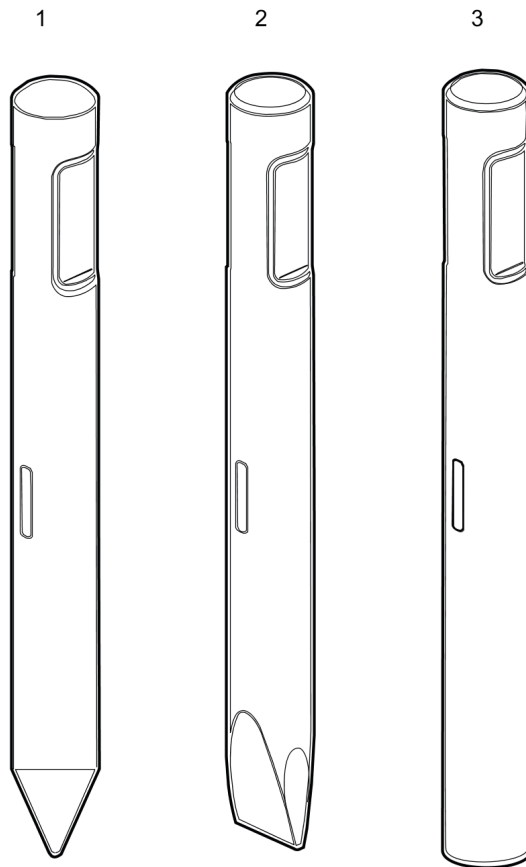
NO EXPLODED VIEW
AVAILABLE
FOR THIS BOM

Item	Part No.	Name	Qty	L
Not Shown	-	Hydraulic hoses		
-	3363087015	Hose with flange, I.D. 25 (1"), flange SAE 1 1/4" - 6000 PSI / JIC 1 5/8", length 2300 mm (91 in.)	2	
-	3363087016	Hose with flange, I.D. 25 (1"), flange SAE 1 1/4" - 6000 PSI / JIC 1 5/8", length 2800 mm (110 in.)	2	
Not Shown	-	Accessories to the hydraulic hoses (for two hoses)		
-	3360106074	Allen screw	8	
-	3363089476	Seal	2	
-	3363066963	Plug, M14 x 1.5 mm	4	

Options / accessories Optional equipment

NO EXPLODED VIEW
AVAILABLE
FOR THIS BOM

Item	Part No.	Name	Qty	L
-	3363094910	Chisel paste cartridge for grease gun and automatic lubrication system, 30 x 500 g (1.1 lbs)	1	
-	3363034567	Grease gun for 500 g cartridge	1	
-	3363491004	Service box with nitrogen cylinder, 2 l, 0.43 gal (0.53 US gal)	1	
-	3363094940	Service box without nitrogen cylinder	1	
-	3361852171	Test gauge lower wear bush	1	
-	3363094952	Inside callipers upper wear bush	1	
Not Shown	-	Adapter plate matching the carrier. Consult the Chicago Pneumatic Customer Center/Dealer in your area.	1	
-	3363100699	Base plate with through borings	1	
-	3363094575	Bolt kit	1	
-	3360209445	Allen key (22 mm)	1	
-	3363105847	Dust wiper	1	

Options / accessories Working tools

Item	Part No.	Name	Qty	L
1	4211105509	Moil point		A
2	4211105510	Chisel (cross)		B
3	4211105507	Blunt tool		C

Comments for Page: Working tools

(L)OCAL REMARKS

A | L=590 mm, LT=1225 mm, Wt=145.9 kg

L=23.23 inch, LT=48.23 inch, Wt=321.6 lb

B | W=150 mm, L=590 mm, LT=1225 mm, Wt=154.7 kg

W=5.91 inch, L=23.23 inch, LT=48.23 inch, Wt=341.0 lb

C | L=590 mm, LT=1225 mm, Wt=165.3 kg

L=23.23 inch, LT=48.23 inch, Wt=364.4 lb

