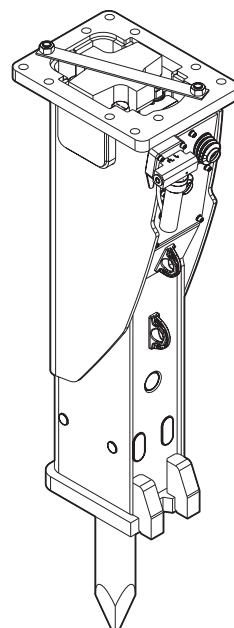


Spare parts list

Hydraulic breakers

RX 26

	Valid from serial number	Valid to serial number
RX 26	DEQ152263	



General information

This spare parts list applies to the following:

Part number	Description
3363116813	Hydraulic breaker RX 26 with CP-Lube

Use only authorized parts. Any damage or malfunction caused by the use of unauthorized parts is not covered by Warranty or Product Liability. Any unauthorized use or copying of the contents or any part thereof is prohibited. This applies in particular to trademarks, model denominations, part numbers, and drawings.

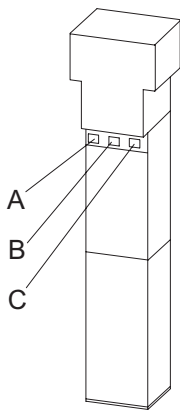
Instructions for use

This spare parts list contains no safety regulations and is merely intended to assist in the ordering of spare parts. For information about operating, servicing, or repairing, the relevant Safety and operating instructions must be consulted at all costs. Please observe the safety instructions listed in the relevant Safety and operating instructions!

Instructions for ordering

It is essential to indicate the serial number of the hydraulic attachment when ordering spare parts! Please note the full identification number of your hydraulic attachment. The code can be found on the cylinder. Determine the quantity of individual parts which are required and need to be ordered. The order must indicate the following details:

- full identification code of the hydraulic attachment
- required quantity
- part number
- description



- A. Cylinder number
- B. Type
- C. Serial number

Contents

Service, repair and wear part kits

Kit list	1
----------	---

Mechanical

Hydraulic breaker	3
Percussion unit part 1: cylinder cover	5
Percussion unit part 2: cylinder	8
Percussion unit part 3: lower breaker part	11
Automatic lubrication system kit	13
Tightening torques	15
Dimensions	18

Options / accessories

Hydraulic hoses	20
Optional equipment	23
Working tools	25

Service, repair and wear part kits Kit list

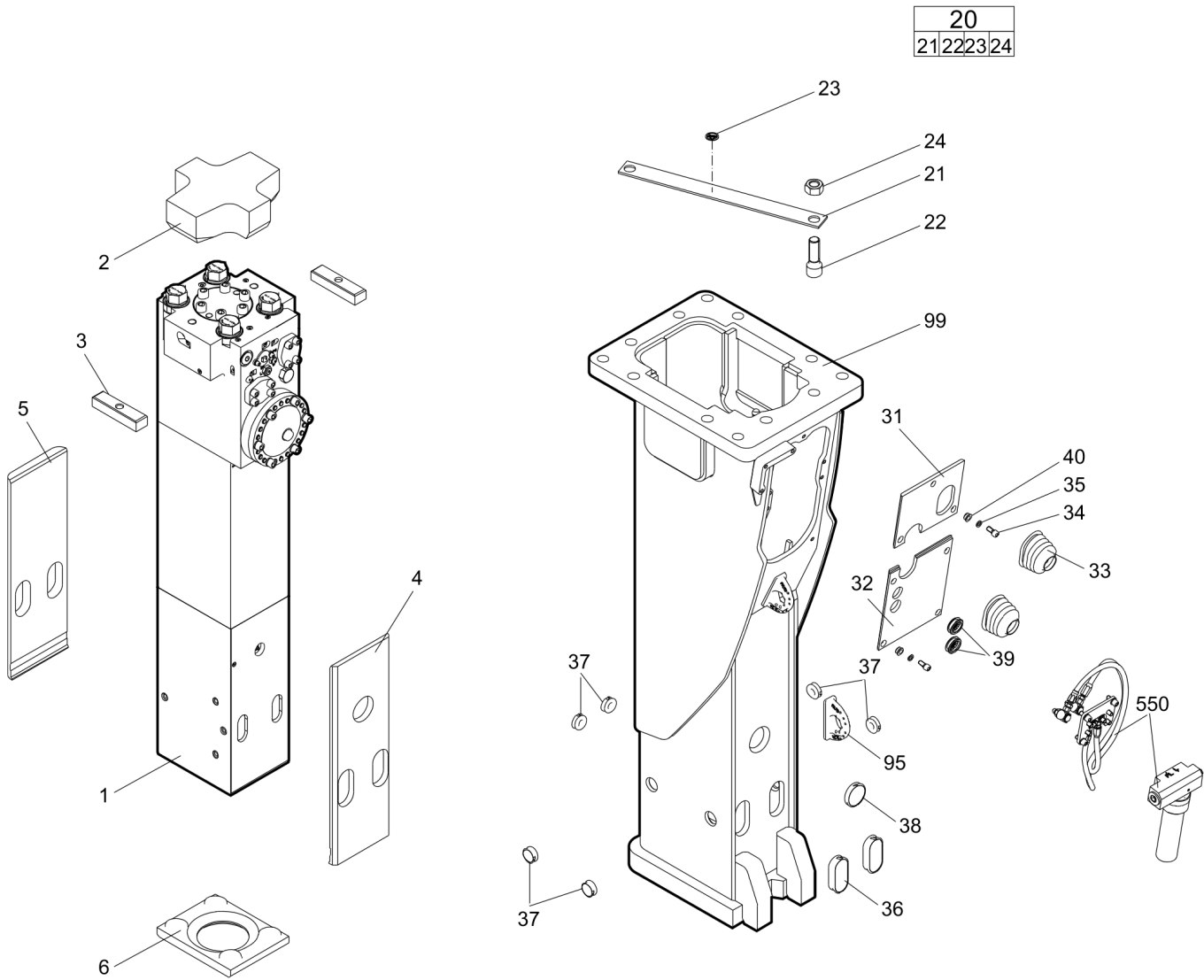
NO EXPLODED VIEW
AVAILABLE
FOR THIS BOM

Item	Part No.	Name	Qty	L
KIT	3363112933	Label kit	1	
KIT	3363112932	Seal kit	1	
104	3360314375	O-ring	1	
105	3360314656	O-ring	1	
108	3363112659	O-ring	1	
113	3361031912	O-ring	1	
114	3361850529	Back-up ring	1	
117	3361031990	O-ring	1	
151	3360314372	O-ring	2	
162	3360478171	O-ring	1	
182	3360478426	Threaded plug	1	
183	3360175125	O-ring	1	
201	3363031872	Seal	1	
202	3360479721	O-ring	1	
203	3363031973	Seal	1	
204	3363114621	Seal	1	
301	3362328126	O-ring	1	
304	3363083668	Wiper	1	
305	3362267584	Seal	5	
306	3362267589	Seal	4	
307	3362267557	Seal	1	
390(391-392)	3362263822	Seal kit	1	
391	3362263820	Seal	1	
392	2262263821	Back-up ring	1	
KIT	3363091732	Seal kit for swivel joint for automatic lubrication system	1	
KIT	3363098088	Fastening screw kit	1	
154	3361031989	Threaded insert	6	
116	3363070490	Fastening screw	6	
115	3361333703	Pair of lock washers	6	
KIT	3363089849	Accumulator repair kit	1	
-	3362261647	Diaphragm	1	
-	3360332259	Filling screw	1	
-	3360314460	O-ring	1	
-	3361335025	Protective cap	1	
-	3361031912	O-ring	1	
-	3361850529	Back-up ring	1	

Refer to Parts Online for the most up to date information. The printed information might be outdated.

Wed Jul 27 02:46:38 MDT 2016

Mechanical Hydraulic breaker



Item	Part No.	Name	Qty	L
1		Percussion unit	1	A
2	3363105171	Elastic pad	1	
3	3363105173	Shock absorber	2	
4	3363105177	Guide plate	1	
5	3363105179	Guide plate	1	
6	3363105175	Plate	1	
20(21-24)	33630834 6	Transport safety device complete	1	
21		Transport safety device	1	
22	3360026883	Allen screw	2	
23	3363091872	Label transport safety device	1	
24	3360103254	Nut	2	
31	3363111398	Plate	1	B
32	3363111399	Plate	1	C
33	3363105139	Cover	2	
34	3360103750	Allen screw	7	
35	3361850596	Pair of lock washers	7	
36	3363086011	Plug	2	
37	3363086015	Plug	6	
38	3362267893	Plug	1	
39	3363105987	Plug	2	
40	3363111271	Sleeve	7	
95	3363111994	Lifting eye	2	D
99	3363112406	Breaker box	1	E
550	3363111490	Automatic lubrication system kit	1	A

Comments for Page: Hydraulic breaker

(L)OCAL REMARKS

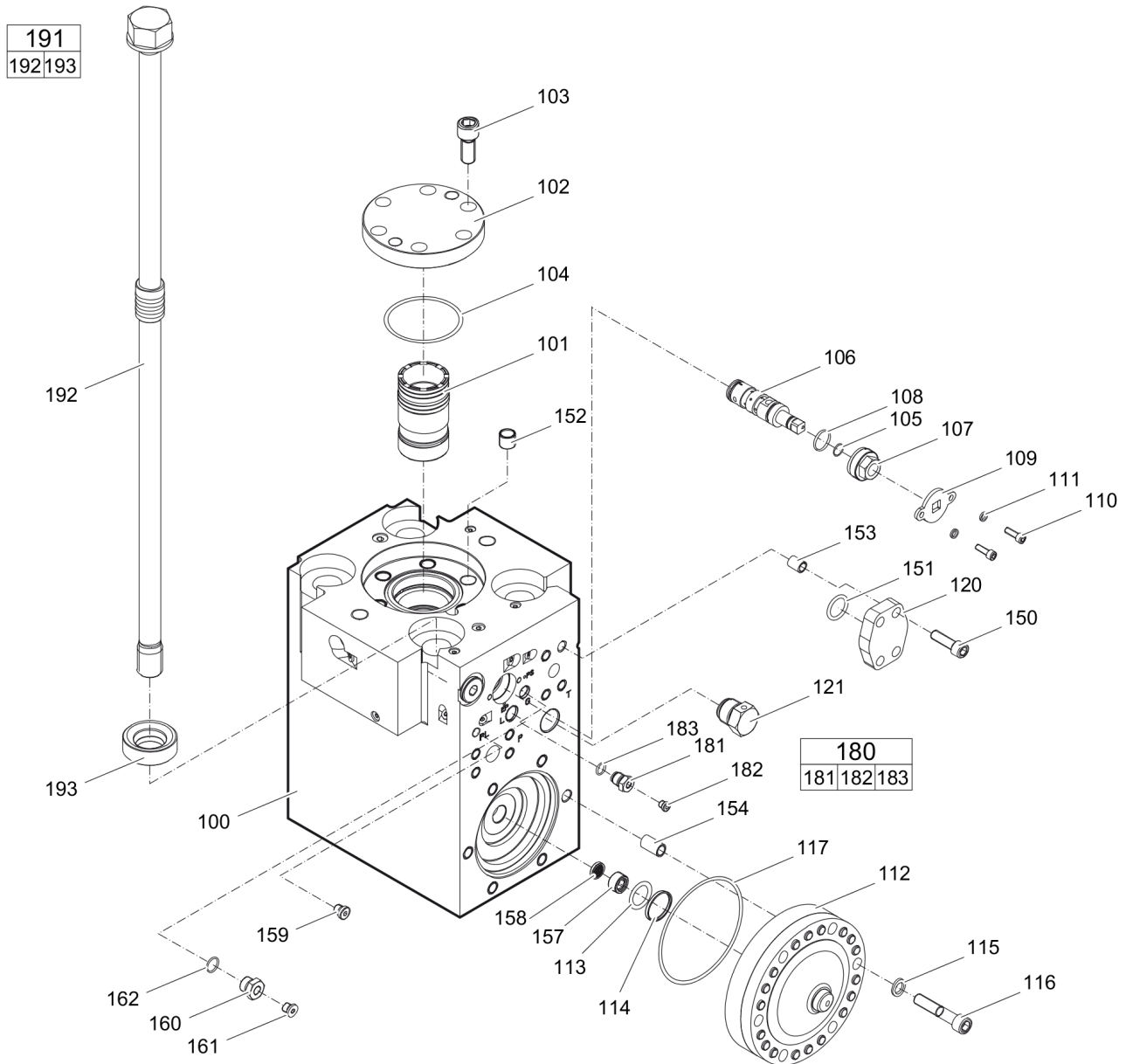
A | see separate chapter

B | with 3 times item 40

C | with 4 times item 40

D | professional welding process necessary

E | with item 95

Mechanical Percussion unit part 1: cylinder cover

Refer to Parts Online for the most up to date information. The printed information might be outdated.

Wed Jul 27 02:46:41 MDT 2016

Item	Part No.	Name	Qty	L
100	3363112635	Cylinder cover	1	A
101	3363118244	Main control valve	1	
102	3361331555	Cover	1	
103	3360103776	Allen screw	6	
104	3360314375	O-ring	1	
105	3360314656	O-ring	1	
106	3363113244	Valve	1	B
107	3363113246	Threaded plug	1	
108	3363112659	O-ring	1	
109	3363119005	Plate	1	
110	3360103735	Allen screw	2	
111	3361850743	Pair of lock washers	2	
112	3363069585	HP-accumulator	1	
113	3361031912	O-ring	1	
114	3361850529	Back-up ring	1	
115	3361333703	Pair of lock washers	6	
116	3363070490	Fastening screw	6	
117	3361031990	O-ring	1	
120	3363034041	Blind flange	2	
121	3361854511	Non-return valve	1	
150	3363034274	Allen screw	8	
151	3360314372	O-ring	2	
152	3361031529	Threaded insert	6	
153	3361031946	Threaded insert	8	
154	3361031989	Threaded insert	6	
157	3361844115	Threaded plug	1	
158	3361844113	Strainer disk	1	
159	3363066963	Plug, M14 x 1.5 mm	1	
160	3361854657	Connecting screw	1	
161	3360478439	Threaded plug	1	
162	3360478171	O-ring	1	
180(181-183)	3363087286	Filling Valve Complete	1	
181		Filling valve	1	
182	3360478426	Threaded plug	1	
183	3360175125	O-ring	1	
191(192-193)	3363112935	Tensioning bolt complete	4	
192		Tensioning bolt	1	

Refer to Parts Online for the most up to date information. The printed information might be outdated.

Wed Jul 27 02:46:41 MDT 2016

Item	Part No.	Name	Qty	L
193	3363097773	Washer	1	

Comments for Page: Percussion unit part 1: cylinder cover

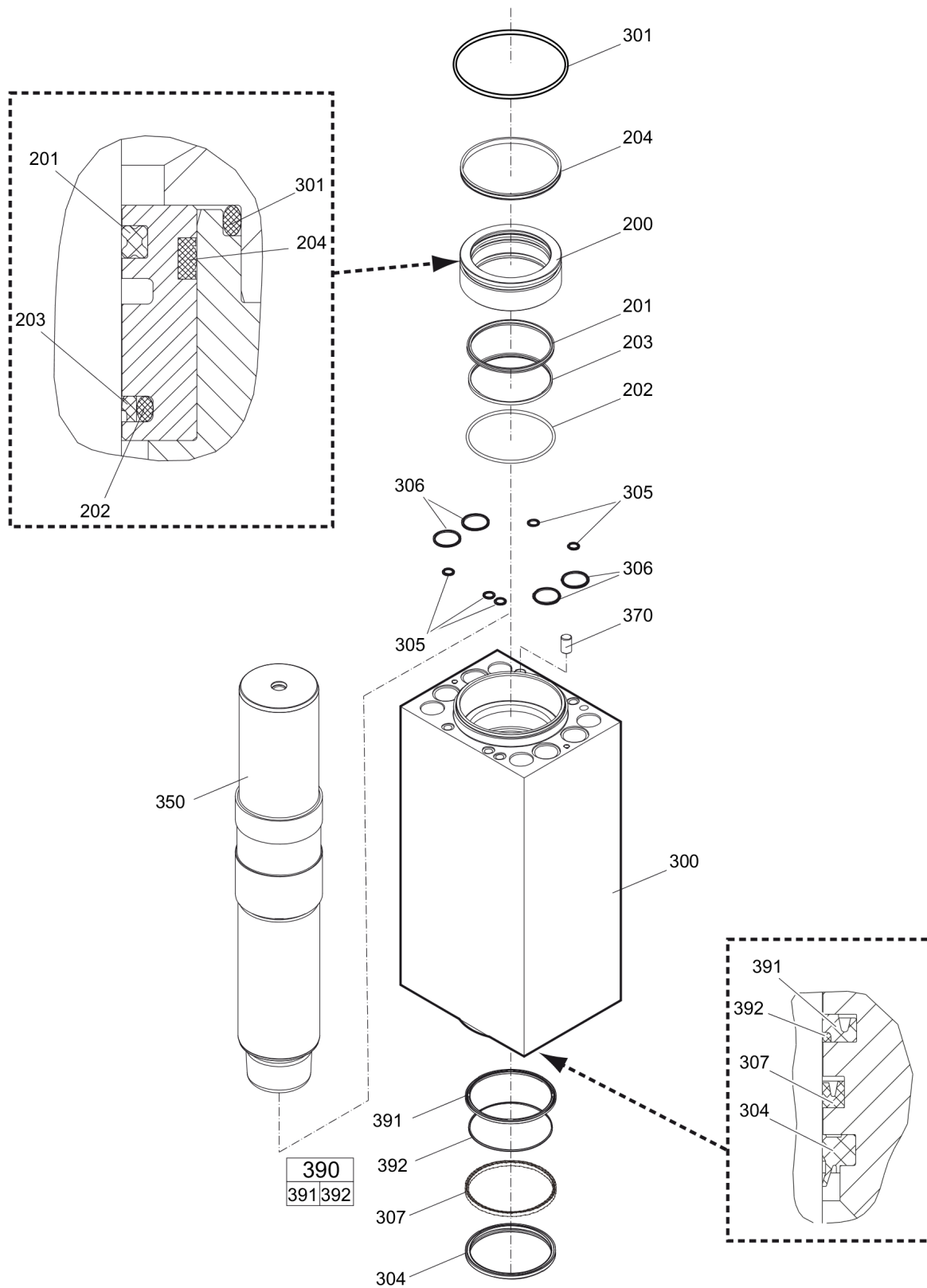
(L)OCAL REMARKS

A | with item 152 - 162

B | PowerControl Plus

This page intentionally left blank

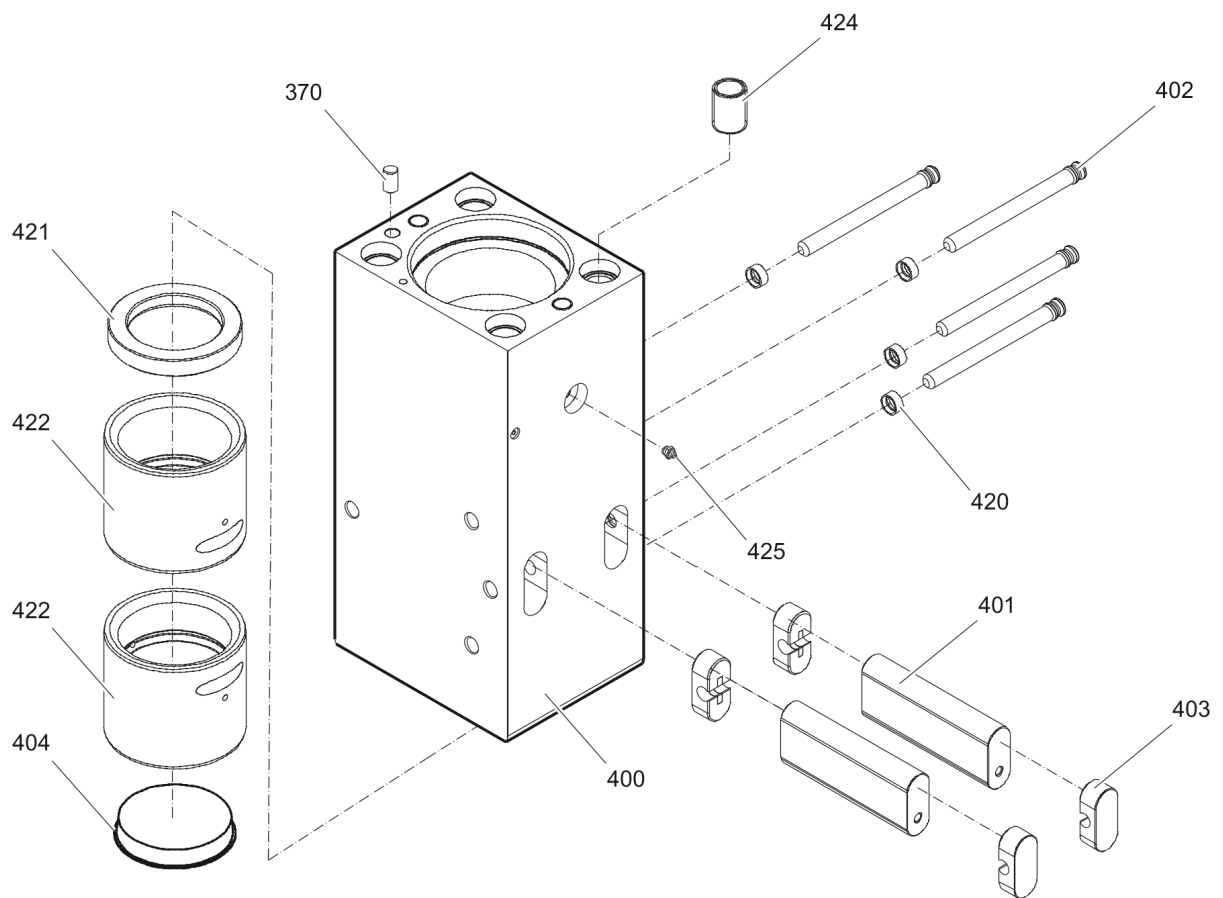
Mechanical Percussion unit part 2: cylinder



Refer to Parts Online for the most up to date information. The printed information might be outdated.

Wed Jul 27 02:46:42 MDT 2016

Item	Part No.	Name	Qty	L
200	3363105557	Seal bush	1	
201	3363031872	Seal	1	
202	3360479721	O-ring	1	
203	3363031973	Seal	1	
204	3363114621	Seal	1	
300	3363112441	Cylinder	1	
301	3362328126	O-ring	1	
304	3363083668	Wiper	1	
305	3362267584	Seal	5	
306	3362267589	Seal	4	
307	3362267557	Seal	1	
350	3363085730	Percussion piston	1	
370	3363033051	Lock pin	1	
390(391-392)	3362263822	Seal kit	1	
391		Seal	1	
392		Back-up ring	1	

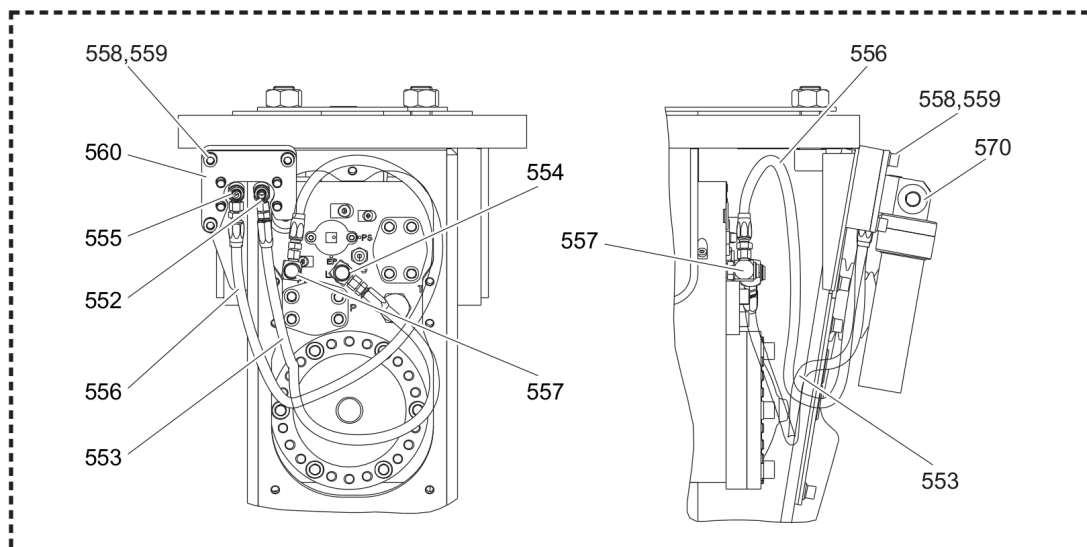
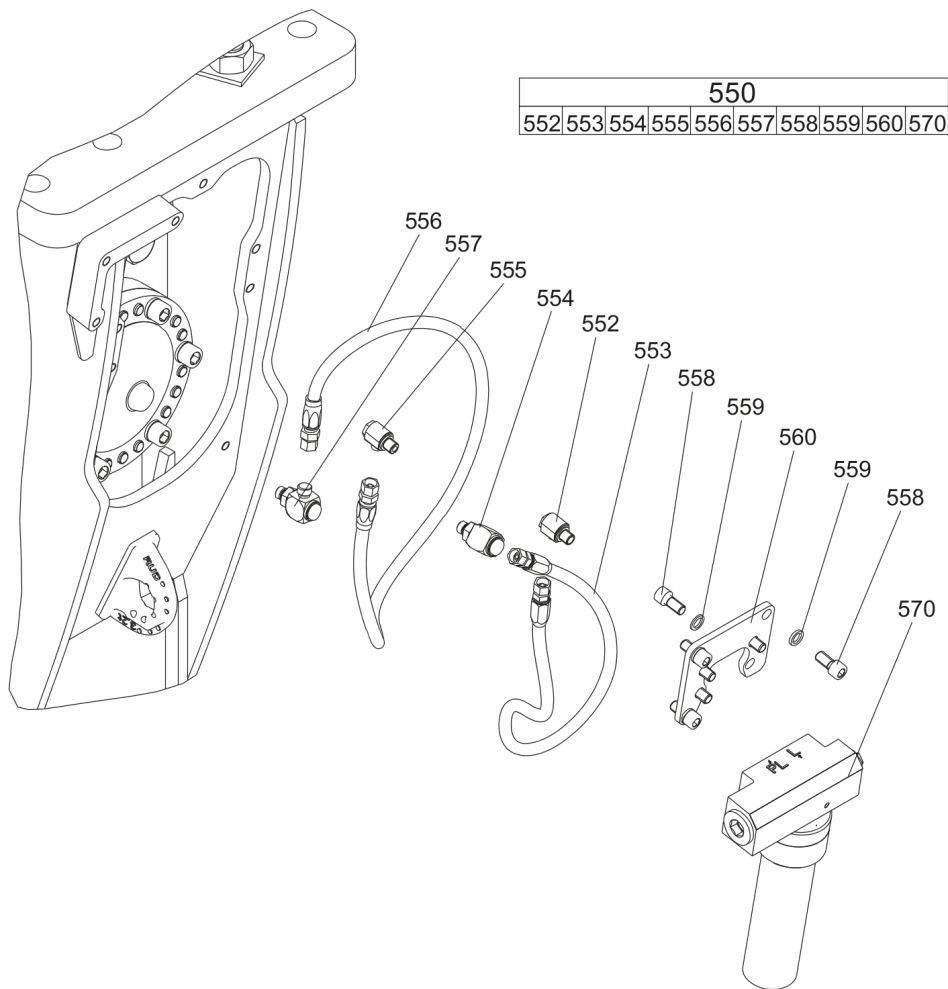
Mechanical Percussion unit part 3: lower breaker part

Item	Part No.	Name	Qty	L
370	3363033051	Lock pin	1	
400	3363106623	Lower breaker part	1	A
401	3360981927	Retainer bar	2	
402	3363033027	Bolt	4	
403	3362262925	Plug	4	
404	3363066028	Protective cap	1	
420	3363033043	Locking bush	4	
421	3363069077	Impact ring	1	
422	3363105555	Wear bush	2	
424	3363031774	Threaded insert	4	
425	3360433774	Grease nipple	1	

Comments for Page: Percussion unit part 3: lower breaker part

(L)OCAL REMARKS

A | with item 420 - 425 and two times item 402

Mechanical Automatic lubrication system kit

Item	Part No.	Name	Qty	L
550(552-570)		Automatic lubrication system kit	1	
552	3363066233	Fitting	1	A
553	3363083873	Hydraulic hose	1	B
554	3363087186	Fitting	1	C
555	3363066234	Fitting	1	D
556	3363110402	Hydraulic hose	1	E
557	3363087185	Fitting	1	F
558	3360103750	Allen screw	7	G
559	3361850596	Pair of lock washers	7	
560	3363110411	Support	1	
570	3363110530	Automatic lubrication system	1	H

Comments for Page: Automatic lubrication system kit

(L)OCAL REMARKS

A | secure with Loctite 243

B | Grease line

secure with Loctite 243

Route the hydraulic hoses as shown on the drawing. It must be ensured that the hydraulic hoses can move freely and are not in contact at any point.

C | secure with Loctite 243

D | secure with Loctite 243

E | Oil line

secure with Loctite 243

Route the hydraulic hoses as shown on the drawing. It must be ensured that the hydraulic hoses can move freely and are not in contact at any point.

F | secure with Loctite 243

G | secure all 4 Allen screws with Loctite 243 screwed in the CP-Lube

H | CP-Lube

Mechanical Tightening torques

NO EXPLODED VIEW
AVAILABLE
FOR THIS BOM

Item	Part No.	Name	Qty	L
22	-	Allen screw - 240 Nm		A
24	-	Nut - 240 Nm		B
34	-	Allen screw - 85 Nm		C
103	-	Allen screw - 380 Nm		D
107	-	Threaded plug - 300 Nm		E
110	-	Allen screw - 20 Nm		F
116	-	Allen screw - 350 Nm		G
121	-	Non-return valve - 200 Nm		H
150	-	Allen screw - 130 Nm		I
181	-	Filling valve - 130 Nm		J
182	-	Threaded plug - 20 Nm		K
192	-	Tensioning bolt		L
552	-	Fitting 45 Nm		M
553	-	Hydraulic hose, grease line - 16 Nm		N
554	-	Fitting - 50 Nm		O
555	-	Fitting - 55 Nm		P
556	-	Hydraulic hose, oil line - 42 Nm		Q
557	-	Fitting - 60 Nm		R
558	-	Allen screw - 85 Nm		S

Comments for Page: Tightening torques

(L)OCAL REMARKS

A | Allen key size 22

B | Socket spanner size 46

C | Allen key size 10

D | Allen key size 17

E | Socket spanner size 30

F | Allen key size 6

G | Allen key size 14

H | Socket spanner size 41

I | Allen key size 12

J | Socket spanner size 22

K | Allen key size 5

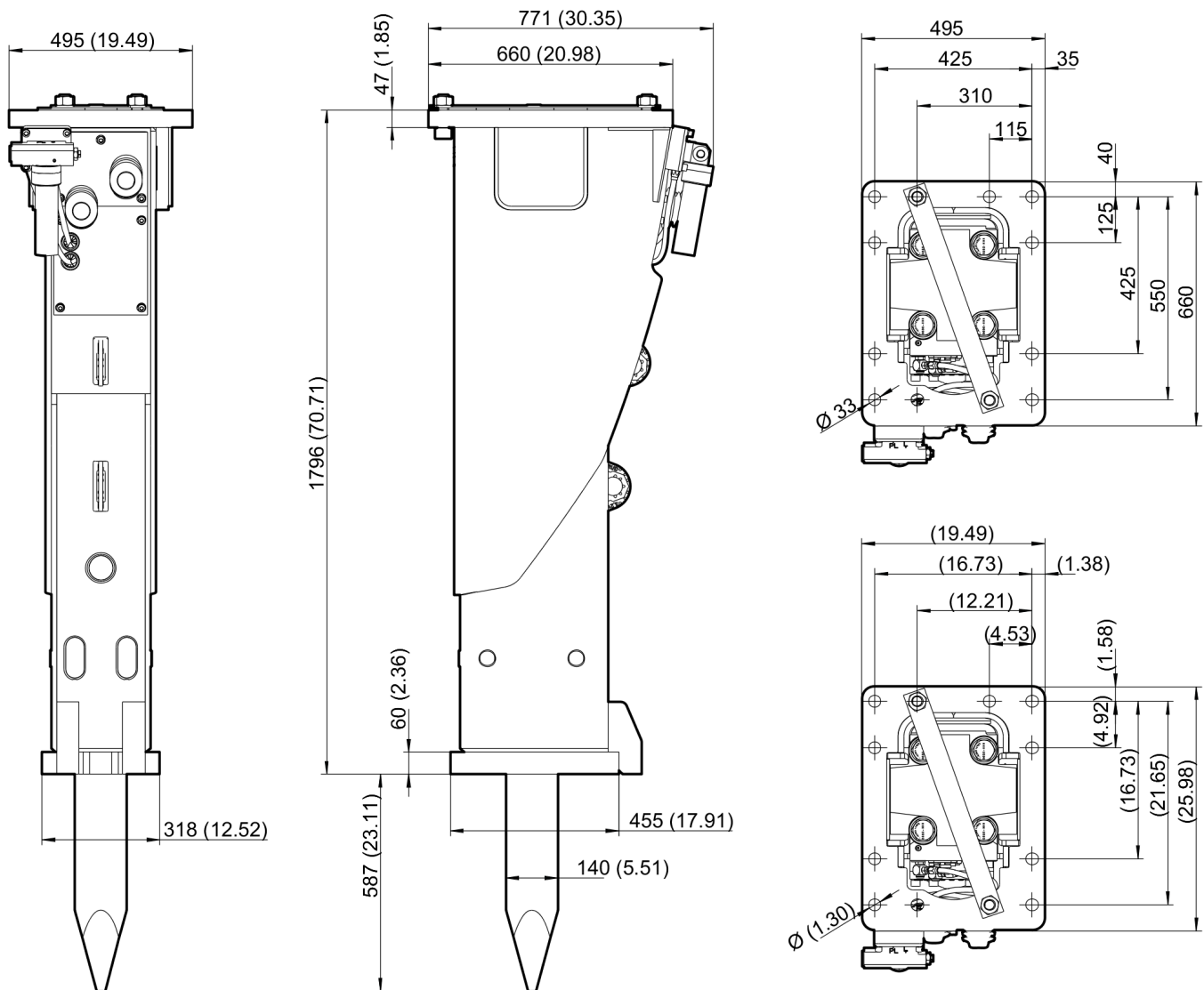
L | Torque wrench or Power wrench size 55

1. Pretighten the tensioning bolts to 500 Nm, proceeding in a crosswise fashion,
2. then tighten each tensioning bolt through 120° (2 sides of hexagonal head) in a crosswise fashion,
3. finally tighten each tensioning bolt again through 150° (2.5 sides of hexagonal head) in a crosswise fashion.

M | Open-end wrench size 17, 19, 22

- N | Open-end wrench size 17
- O | Open-end wrench size 17, 22, 27
- P | Open-end wrench size 19, 22
- Q | Open-end wrench size 19
- R | Open-end wrench size 19, 22, 27
- S | Allen key size 10

This page intentionally left blank

Mechanical Dimensions

Refer to Parts Online for the most up to date information. The printed information might be outdated.

Wed Jul 27 02:46:46 MDT 2016

This page intentionally left blank

Options / accessories Hydraulic hoses

NO EXPLODED VIEW
AVAILABLE
FOR THIS BOM

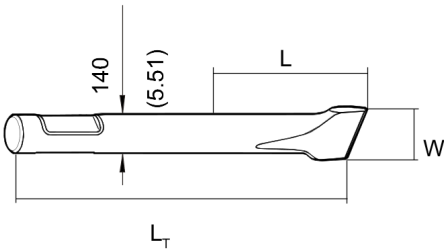
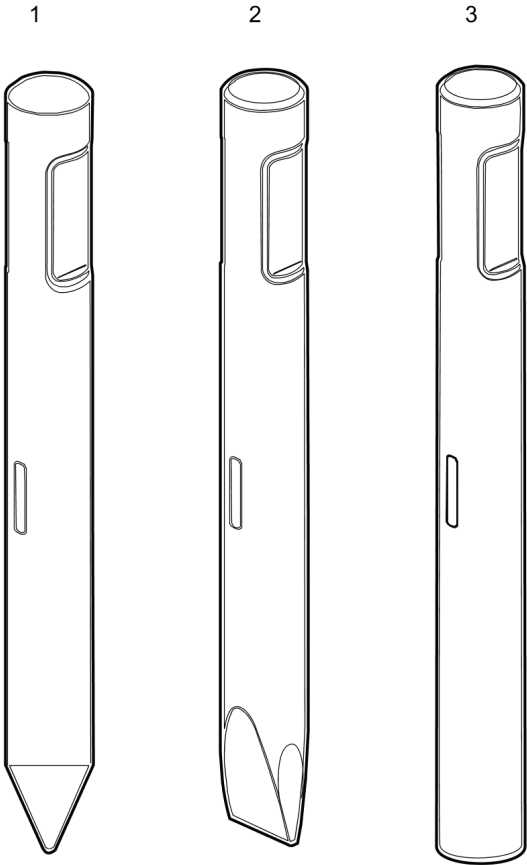
Item	Part No.	Name	Qty	L
Not Shown	-	Hydraulic hoses		
-	3363087015	Hydraulic hose with flange, I.D. 25 (1"), flange SAE 1 1/4" - 6000 PSI / JIC 1 5/8", length 2300 mm (91 in.)	2	
-	3363087016	Hydraulic hose with flange, I.D. 25 (1"), flange SAE 1 1/4" - 6000 PSI / JIC 1 5/8", length 2800 mm (110 in.)	2	
Not Shown	-	Accessories to the hydraulic hoses (for two hoses)		
-	3360106074	Allen screw	8	
-	3363089476	Seal	2	
-	3363066963	Plug, M14 x 1.5 mm	4	

Options / accessories Optional equipment

NO EXPLODED VIEW
AVAILABLE
FOR THIS BOM

Item	Part No.	Name	Qty	L
-	3363094910	Chisel paste cartridge for grease gun and CP-Lube, 30 x 500 g (1.1 lbs)	1	
-	3363034567	Grease gun for 500 g cartridge	1	
-	3363491004	Service box with nitrogen cylinder, 2 l, 0.43 gal (0.53 US gal)	1	
-	3363094940	Service box without nitrogen cylinder	1	
-	3363067413	Test gauge lower wear bush	1	
-	3363094952	Inside callipers upper wear bush	1	
Not Shown	-	Adapter plate matching the carrier. Consult the Chicago Pneumatic Customer Center/Dealer in your area.	1	
-	3363100697	Base plate with through borings	1	
-	3363094575	Bolt kit	1	
-	3360209445	Allen key (22 mm)	1	
-	3363112941	Dust wiper kit	1	

Options / accessories Working tools



Item	Part No.	Name	Qty	L
1	4211105503	Moil point	1	A
2	4211105504	Chisel (cross)	1	B
3	4211105501	Blunt tool	1	C

Comments for Page: Working tools

(L)OCAL REMARKS

A | L=585 mm, LT=1115 mm, Wt=114.7 kg

L=23.03 inch, LT=43.90 inch, Wt=202.9 lb

B | W=140 mm, L=585 mm, LT=1115 mm, Wt=121.9 kg

W=5.51 inch, L=23.03 inch, LT=43.90 inch, Wt=268.8 lb

C | L=585 mm, LT=1115 mm, Wt=130.8 kg

L=23.03 inch, LT=43.90 inch, Wt=288.3 lb

