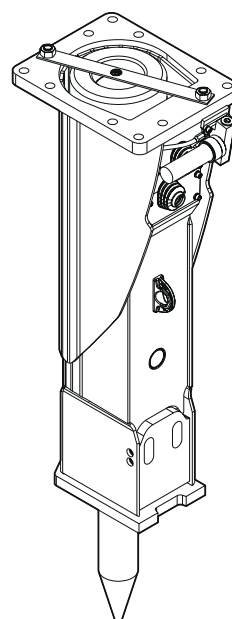


# Spare parts list

## Hydraulic breakers

### RX 22

	Valid from serial number	Valid to serial number
RX 22	DEQ151844	



# General information

This spare parts list applies to the following:

Part number	Description
3363116812	Hydraulic breaker RX 22 with CP-Lube

Use only authorized parts. Any damage or malfunction caused by the use of unauthorized parts is not covered by Warranty or Product Liability. Any unauthorized use or copying of the contents or any part thereof is prohibited. This applies in particular to trademarks, model denominations, part numbers, and drawings.

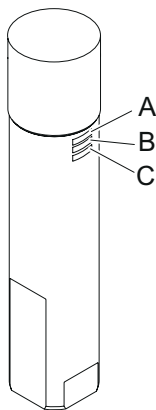
## Instructions for use

This spare parts list contains no safety regulations and is merely intended to assist in the ordering of spare parts. For information about operating, servicing, or repairing, the relevant Safety and operating instructions must be consulted at all costs. Please observe the safety instructions listed in the relevant Safety and operating instructions!

## Instructions for ordering

It is essential to indicate the serial number of the hydraulic attachment when ordering spare parts! Please note the full identification number of your hydraulic attachment. The code can be found on the main body. Determine the quantity of individual parts which are required and need to be ordered. The order must indicate the following details:

- full identification code of the hydraulic attachment
- required quantity
- part number
- description



- A. Type
- B. Serial number
- C. Main body number

## Contents

### Service, repair and wear part kits

Kit list	1
----------	---

### Mechanical

Hydraulic breaker	3
Hydraulic breaker	5
Percussion unit part 1: cover	7
Percussion unit part 2: main body complete	9
Automatic lubrication system kit	11
Tightening torques	13
Dimensions	15

### Options / accessories

Hydraulic hoses	16
Optional equipment	19
Working tools	21

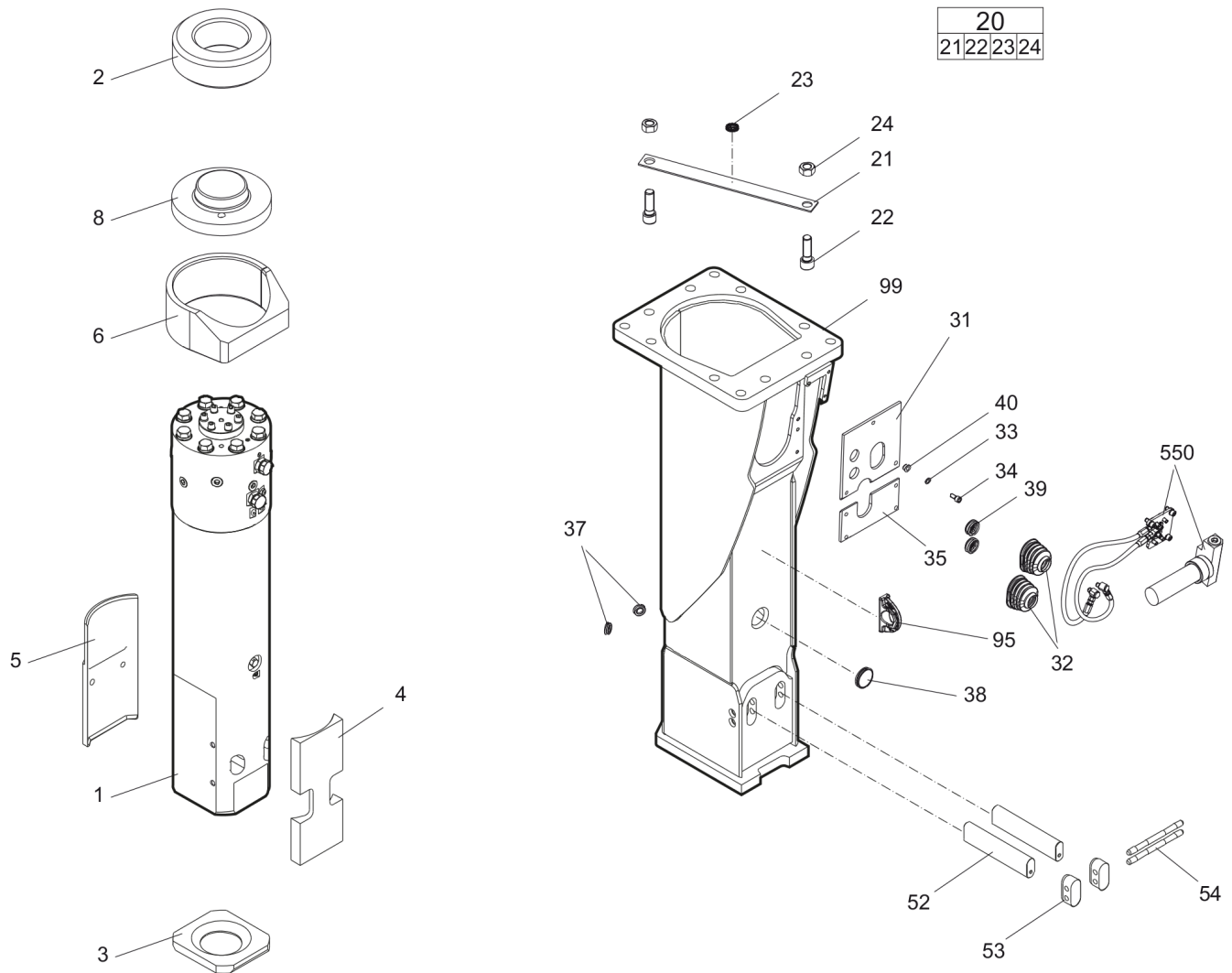
---

**Service, repair and wear part kits** Kit list

NO EXPLODED VIEW  
AVAILABLE  
FOR THIS BOM

Item	Part No.	Name	Qty	L
KIT	3363115063	Label kit	1	
KIT	3363110085	Seal kit	1	
101	3361031951	O-ring	2	
107	3363098702	O-ring	1	
160	3360314551	O-ring	2	
182	3360478426	Threaded plug	1	
183	3360175125	O-ring	1	
203	3363098700	Seal	1	
204	3363110027	Seal	6	
290(291-292)	3363103152	Seal kit	1	
291		Seal	1	
292		Back-up ring	1	
305	3363098705	Wiper	1	
306	3363110029	Seal	8	
307	3362267582	Seal	1	
308	3362267583	Seal	1	
386	3363110076	O-ring	2	
390(391-392)	3363103153	Seal kit	1	
391		Seal	1	
392		Back-up ring	1	

**Mechanical** Hydraulic breaker



Refer to Parts Online for the most up to date information. The printed information might be outdated.

Thu Mar 03 01:49:47 MST 2016

Item	Part No.	Name	Qty	L
1		Percussion unit	1	A
2	3363105141	Elastic pad	1	
3	3363114783	Shock absorber	1	
4	3363115013	Guide plate	1	
5	3363114784	Guide plate	1	
6	3363104695	Guide plate	1	
8	3363105995	Cap	1	
20(21-24)	3363083416	Transport safety device complete	1	
21		Transport safety device	1	
22	3360026883	Allen screw	2	
23	3363091872	Label transport safety device	1	
24	3360103254	Nut	2	
31	3363115344	Plate	1	
32	3363105139	Cover	2	B
33	3361850596	Pair of lock washers	7	
34	3360103750	Allen screw	7	
35	3363115343	Plate	1	C
37	3362267897	Plug	2	
38	3362267893	Plug	1	
39	3363105987	Plug	2	
40	3363111271	Sleeve	7	
52	3363114768	Retainer bar	2	
53	3363114673	Plug	2	
54	3363114778	Bolt	2	
95	3363111994	Lifting eye	1	D
99	3363114989	Breaker box	1	E
550	3363111490	Automatic lubrication system kit	1	A

Comments for Page: Hydraulic breaker

(L)OCAL REMARKS

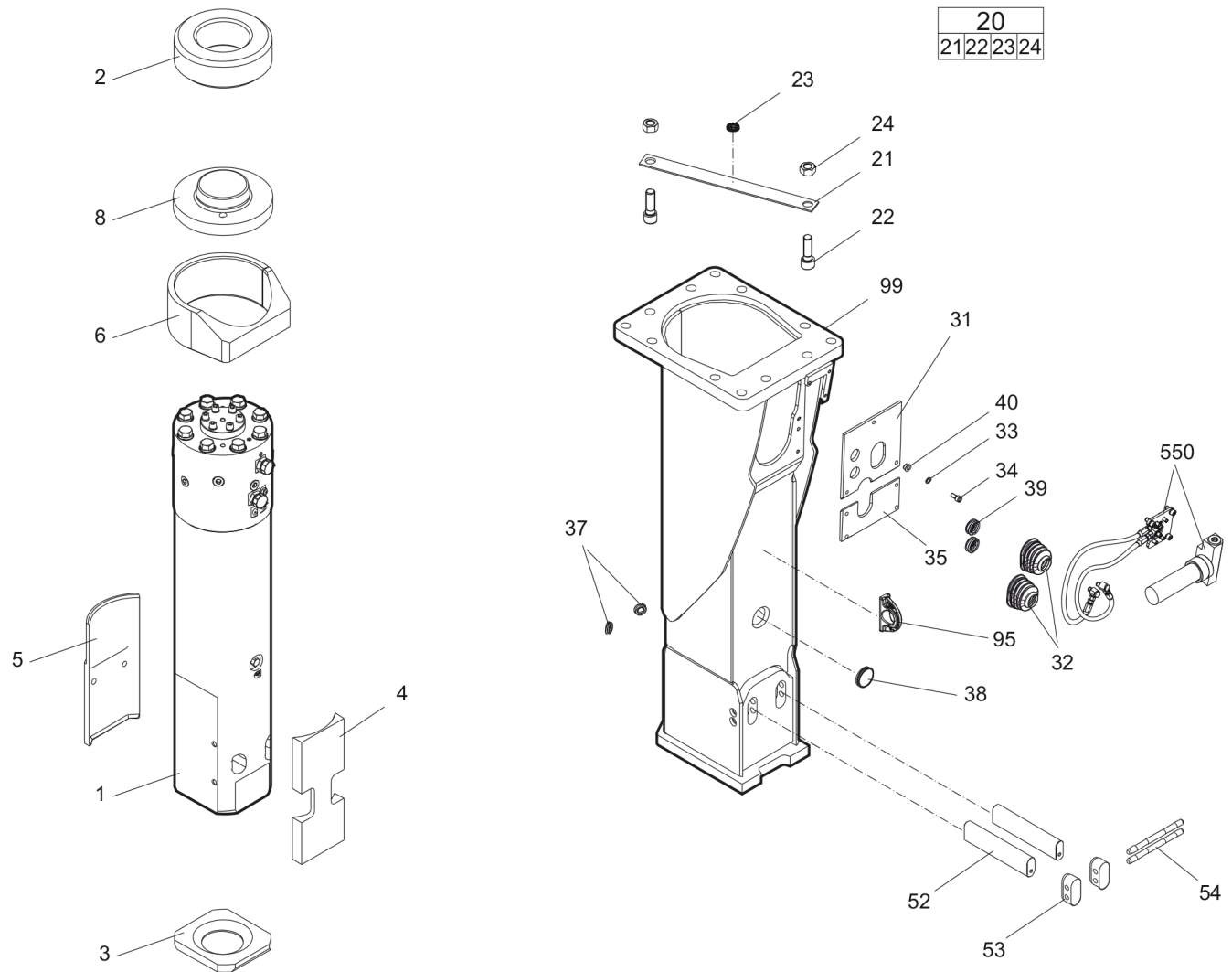
A | see separate chapter

B | with 3 times item 40

C | with 4 times item 40

D | professional welding process necessary

E | with item 95

**Mechanical** Hydraulic breaker

Refer to Parts Online for the most up to date information. The printed information might be outdated.

Thu Mar 03 01:49:49 MST 2016

Item	Part No.	Name	Qty	L
1		Percussion unit	1	A
2	3363105141	Elastic pad	1	
3	3363114783	Shock absorber	1	
4	3363115013	Guide plate	1	
5	3363114784	Guide plate	1	
6	3363104695	Guide plate	1	
8	3363105995	Cap	1	
20(21-24)	3363083416	Transport safety device complete	1	
21		Transport safety device	1	
22	3360026883	Allen screw	2	
23	3363091872	Label transport safety device	1	
24	3360103254	Nut	2	
31	3363111402	Plate	1	
32	3363105139	Cover	2	B
33	3361850596	Pair of lock washers	7	
34	3360103750	Allen screw	7	
35	3363111403	Plate	1	C
37	3362267897	Plug	2	
38	3362267893	Plug	1	
39	3363105987	Plug	2	
40	3363111271	Sleeve	7	
52	3363114768	Retainer bar	2	
53	3363114673	Plug	2	
54	3363114778	Bolt	2	
95	3363111994	Lifting eye	1	D
99	3363114989	Breaker box	1	E
550	3363111490	Automatic lubrication system kit	1	A

Comments for Page: Hydraulic breaker

(L)OCAL REMARKS

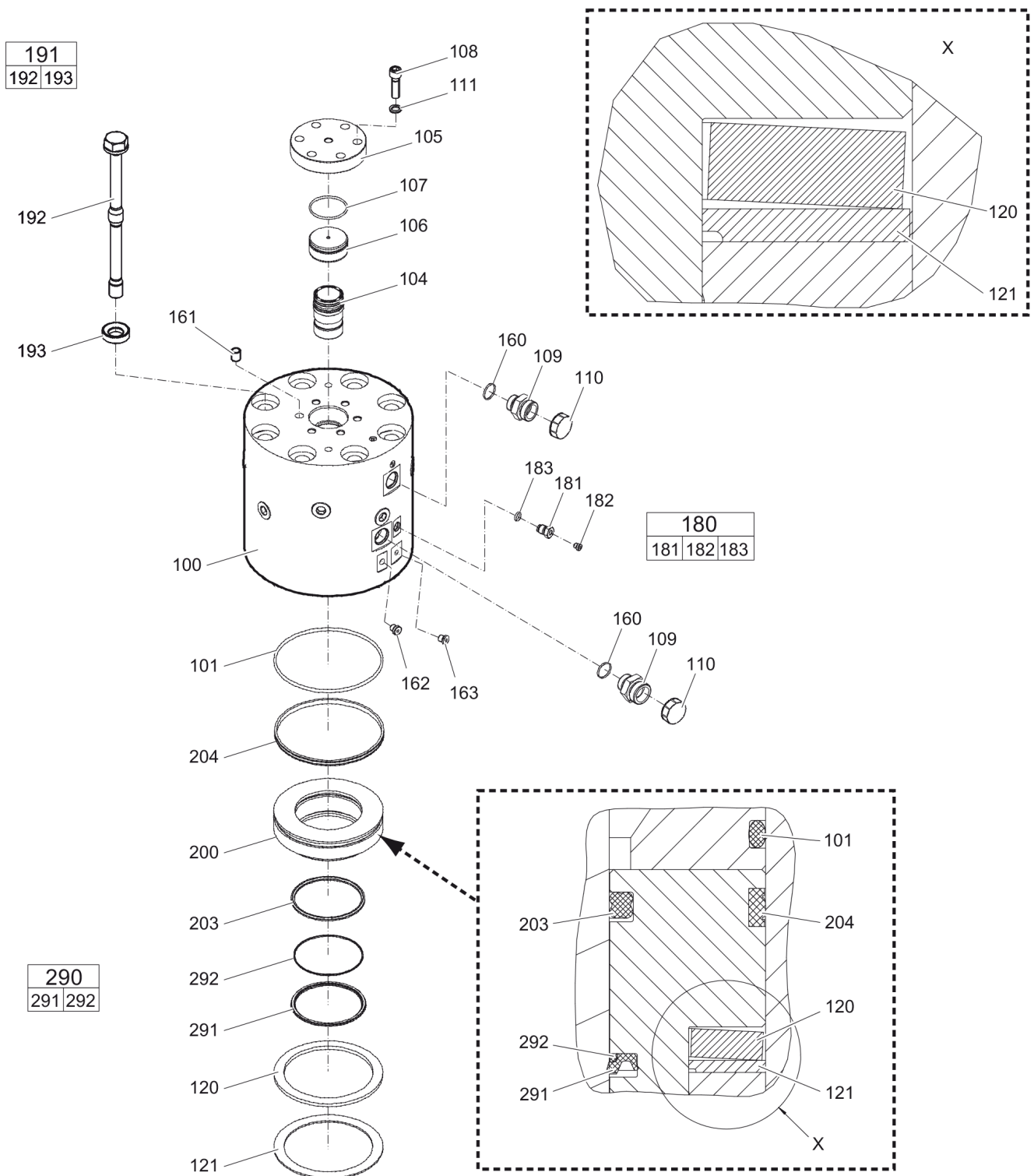
A | see separate chapter

B | with 3 times item 40

C | with 4 times item 40

D | professional welding process necessary

E | with item 95

**Mechanical** Percussion unit part 1: cover

Item	Part No.	Name	Qty	L
100	3363110017	Cover	1	A
101	3361031951	O-ring	1	
104	3363109459	Main control valve	1	
105	3363109465	Cover	1	
106	3363102115	Cover	1	
107	3363098702	O-ring	1	
108	3363083725	Allen screw	6	
109	3360995665	Fitting	2	B
110	3361353488	Protective cap	2	
111	3361333703	Lock washer	6	
120	3363110016	Plate spring	1	
121	3363109471	Disk	1	C
160	3360314551	O-ring	2	
161	3361031915	Threaded insert	6	
162	3363066963	Plug, M14 x 1.5 mm	1	
163	3360478439	Threaded plug	1	
180(181-183)	3363087286	Filling valve	1	
181		Filling valve	1	
182	3360478426	Threaded plug	1	
183	3360175125	O-ring	1	
191(192-193)	3363110084	Bolt complete	8	
192		Bolt	1	
193	3363109463	Washer	1	
200	3363109461	Seal bush	1	
203	3363098700	Seal	1	
204	3363110027	Seal	1	
290(291-292)	3363103152	Seal kit	1	
291		Seal	1	
292		Back-up ring	1	

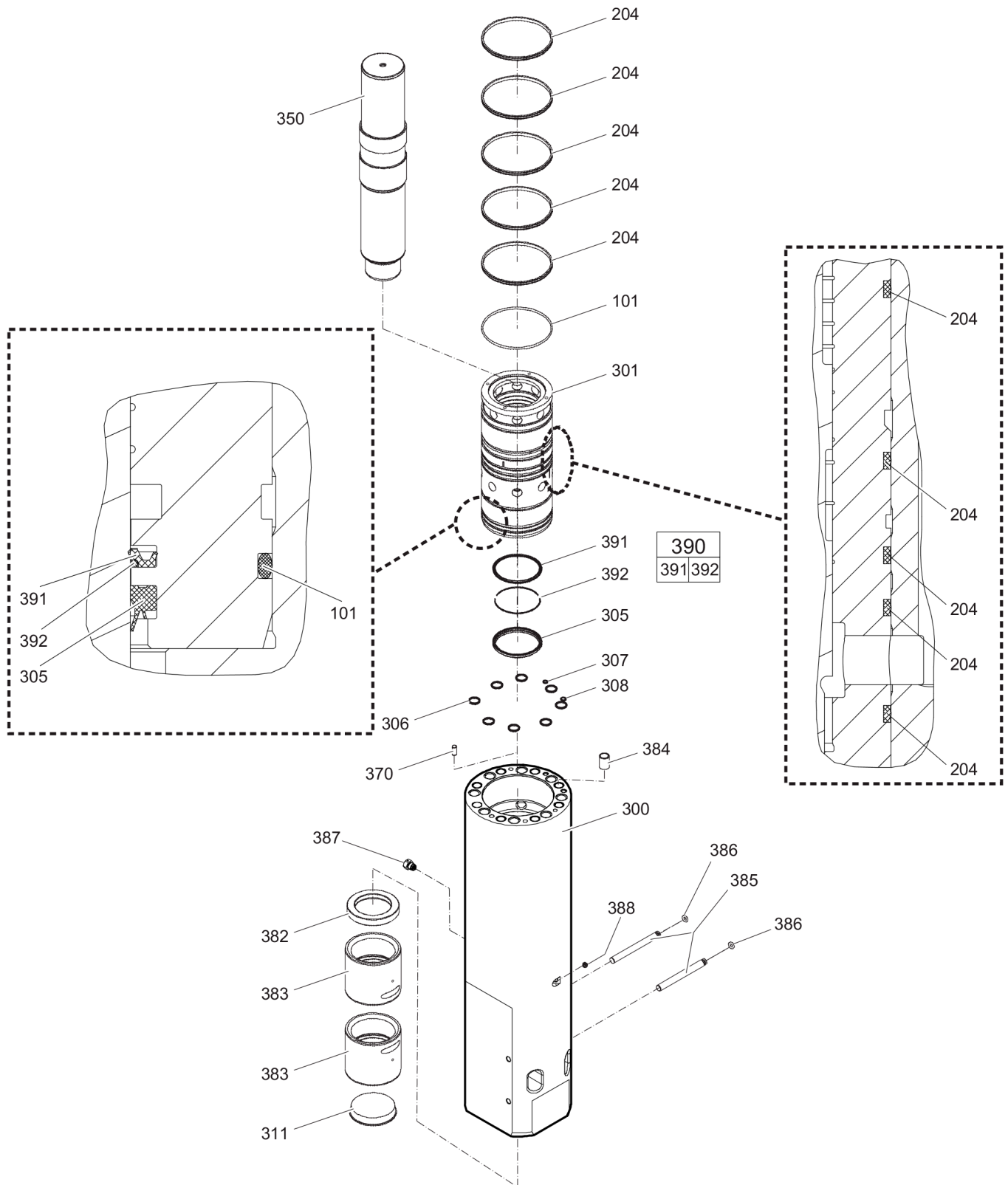
Comments for Page: Percussion unit part 1: cover

(L)OCAL REMARKS

A | with item 161 - 163

B | with item 160

C | observe mounting direction

**Mechanical** Percussion unit part 2: main body complete

Refer to Parts Online for the most up to date information. The printed information might be outdated.

Thu Mar 03 01:49:54 MST 2016

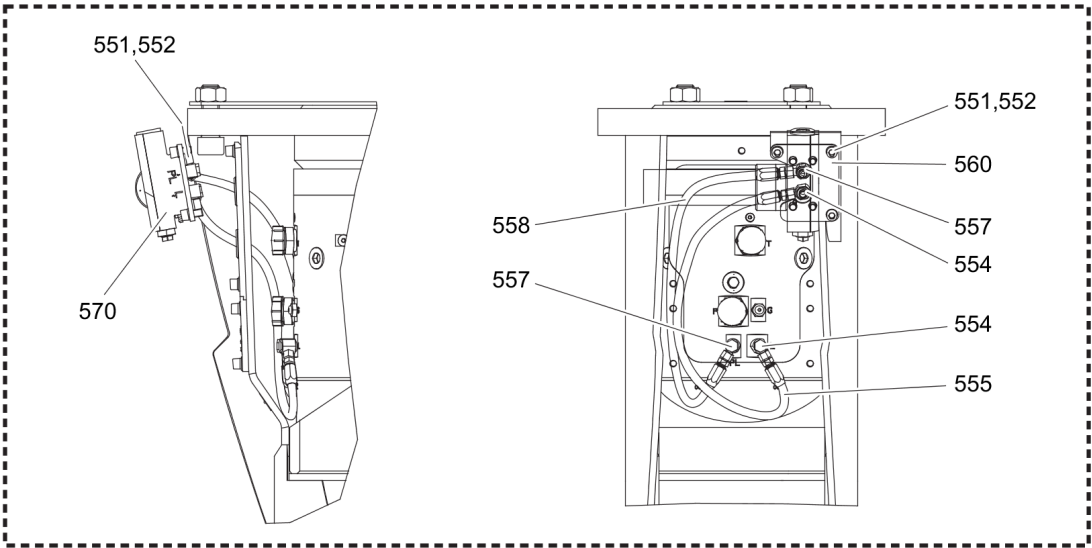
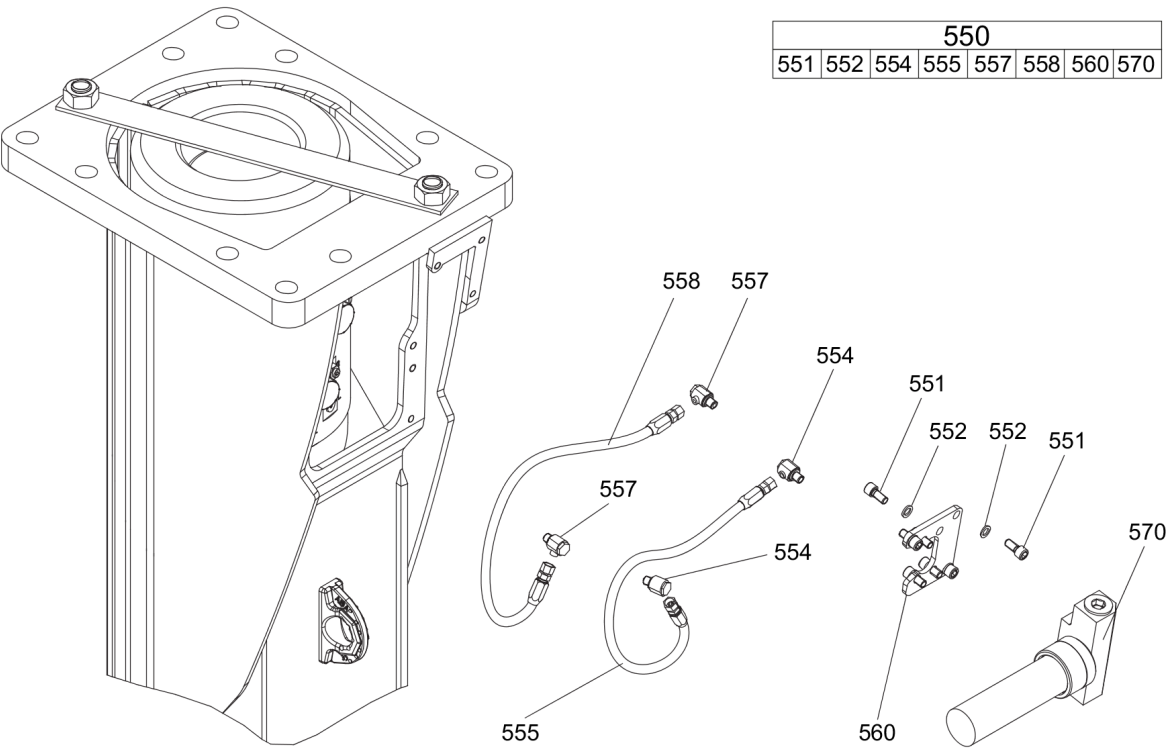
Item	Part No.	Name	Qty	L
101	3361031951	O-ring	1	
204	3363110027	Seal	5	
300	3363114923	Main body	1	A
301	3363111447	Cylinder bush	1	
305	3363098705	Wiper	1	
306	3363110029	Seal	8	
307	3362267582	Seal	1	
308	3362267583	Seal	1	
311	3360995339	Protective cap	1	
350	3363110020	Percussion piston	1	
370	3360106784	Lock pin	1	
382	3363109467	Impact ring	1	
383	3363109469	Wear bush	2	
384	3363083574	Threaded insert	8	
385	3363109457	Bolt	2	
386	3363110076	O-ring	2	
387	3363109435	Non return valve, G1/2 in.	1	
388	3360433774	Grease nipple	1	
390(391-392)	3363103153	Seal kit	1	
391		Seal	1	
392		Back-up ring	1	

Comments for Page: Percussion unit part 2: main body complete

(L)OCAL REMARKS

A | with item 382 - 388

**Mechanical** Automatic lubrication system kit



Item	Part No.	Name	Qty	L
550(551-570)	3363111490	Automatic lubrication system kit	1	
551	3360103750	Allen screw	7	A
552	3361850596	Pair of lock washers	7	
554	3363066233	Fitting	2	B
555	3363083873	Hydraulic hose	1	C
557	3363066234	Fitting	2	D
558	3363087394	Hydraulic hose	1	E
560	3363110411	Support	1	
570	3363110530	Automatic lubrication system	1	F

Comments for Page: Automatic lubrication system kit

(L)OCAL REMARKS

A | secure all 4 Allen screws with Loctite 243 screwed in the CP-Lube

B | secure with Loctite 243

C | Grease line

secure with Loctite 243

Route the hydraulic hoses as shown on the drawing. It must be ensured that the hydraulic hoses can move freely and are not in contact at any point.

D | secure with Loctite 243

E | Oil line

secure with Loctite 243

Route the hydraulic hoses as shown on the drawing. It must be ensured that the hydraulic hoses can move freely and are not in contact at any point.

F | CP-Lube

---

**Mechanical** Tightening torques

NO EXPLODED VIEW  
AVAILABLE  
FOR THIS BOM

Item	Part No.	Name	Qty	L
34	-	Allen screw - 85 Nm		A
108	-	Allen screw - 200 Nm		B
109	-	Fitting - 330 Nm		C
181	-	Filling valve - 130 Nm		D
182	-	Threaded plug - 20 Nm		E
192	-	Bolt		F
387	-	Non-return valve - 200 Nm		G
551	-	Allen screw - 85 Nm		H
554	-	Fitting - 45 Nm		I
555	-	Hydraulic hose, grease line - 16 Nm		J
557	-	Fitting - 55 Nm		K
558	-	Hydraulic hose, oil line - 42 Nm		L

Comments for Page: Tightening torques

(L)OCAL REMARKS

A | Allen key size 10

B | Allen key size 14

C | Open-end wrench size 46

D | Socket spanner size 22

E | Allen key size 5

F | Torque wrench or Power wrench size 41

1. Pretighten the bolts to 100 Nm, proceeding in a crosswise fashion,
2. again pretighten the bolts to 100 Nm, proceeding in a crosswise fashion,
3. then tighten each bolt through 60° (1 sides of hexagonal head) in a crosswise fashion,
4. finally tighten each bolt again through 90° (1 ½ sides of hexagonal head) in a crosswise fashion.

G | Socket wrench size 27

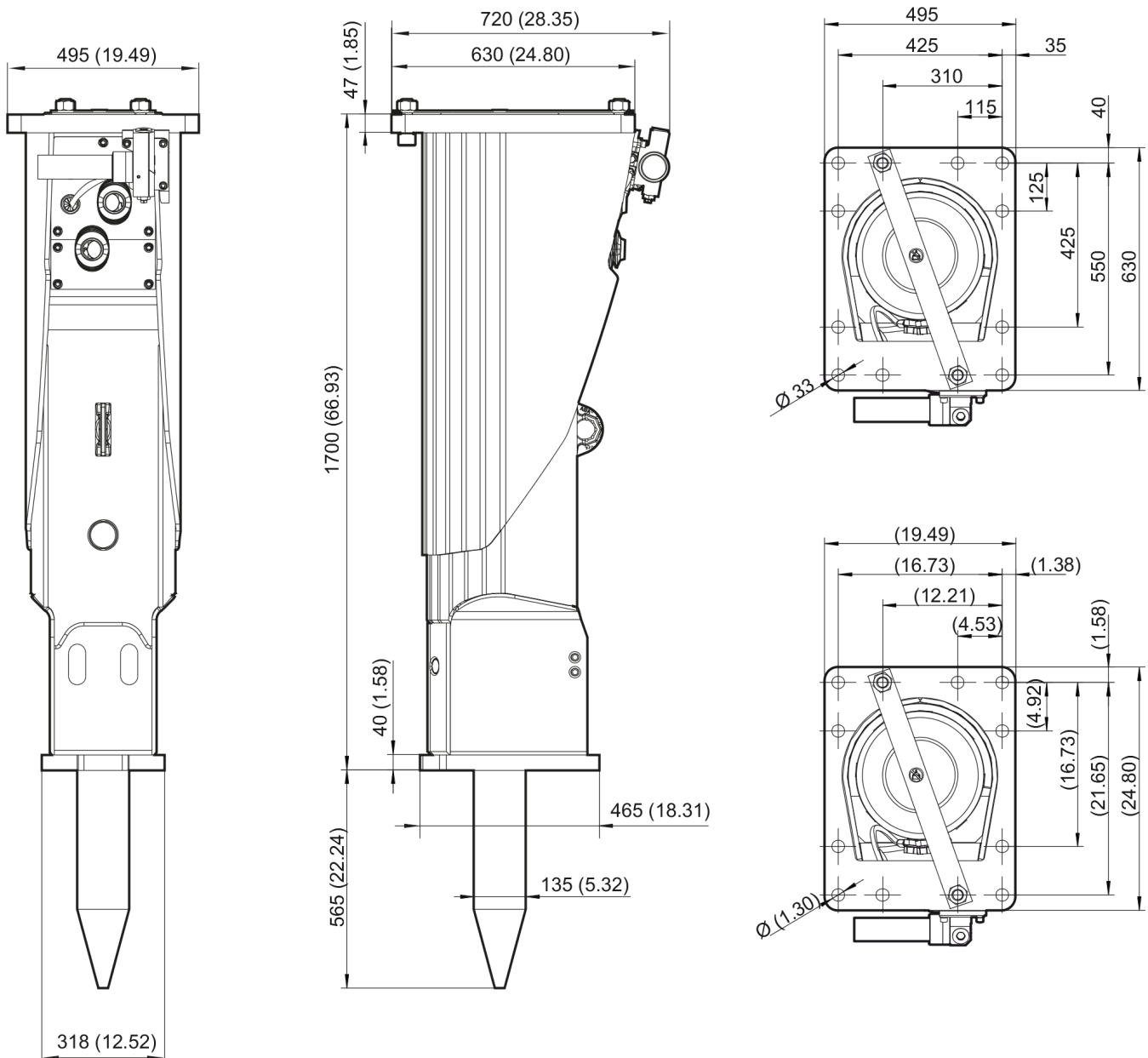
H | Allen key size 10

I | Open-end wrench size 17, 19, 22

J | Open-end wrench size 17

K | Open-end wrench size 19, 22

L | Open-end wrench size 19

**Mechanical** Dimensions

Refer to Parts Online for the most up to date information. The printed information might be outdated.

Thu Mar 03 01:49:59 MST 2016

This page intentionally left blank

---

**Options / accessories** Hydraulic hoses

NO EXPLODED VIEW  
AVAILABLE  
FOR THIS BOM

Item	Part No.	Name	Qty	L
-	3360992340	Hose, I.D. 25 (1"), both ends M42 x 2 conical seal 24°, length 2300 mm (91 in.)	2	
-	3361853859	Hose, I.D. 25 (1"), both ends M42 x 2 conical seal 24°, length 2800 mm (110 in.)	2	

---

**Options / accessories** Optional equipment

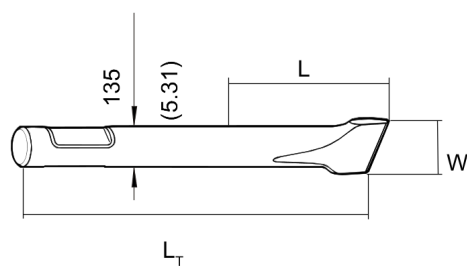
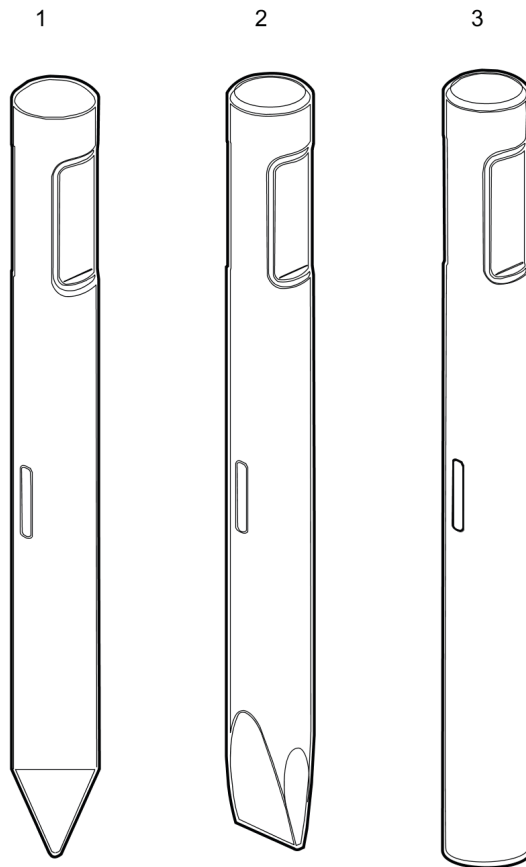
NO EXPLODED VIEW  
AVAILABLE  
FOR THIS BOM

Item	Part No.	Name	Qty	L
-	3363 94910	Chisel paste cartridge for grease gun and automatic lubrication system, 30 x 500 g (1.1 lbs)	1	
-	3363034567	Grease gun for 500 g cartridge	1	
-	3363491004	Service box with nitrogen cylinder, 2 l, 0.43 gal (0.53 US gal)	1	
-	3363094940	Service box without nitrogen cylinder	1	
-	3361852169	Test gauge lower wear bush	1	
-	3363094952	Inside callipers upper wear bush	1	
Not Shown	-	Adapter plate matching the carrier. Consult the Chicago Pneumatic Customer Center/Dealer in your area.	1	
-	3363100697	Base plate with through borings	1	
-	3363094575	Bolt kit	1	
-	3360209253	Allen key (19 mm)	1	
-	3363105151	Dust wiper	1	
-	3363112564	HD kit	1	A

Comments for Page: Optional equipment

(L)OCAL REMARKS

A | reinforcement for breaker box

**Options / accessories** Working tools

Item	Part No.	Name	Qty	L
1	4211105527	Moil point		A
2	4211105528	Chisel (cross)		B
3	4211105525	Blunt tool		C

Comments for Page: Working tools

(L)OCAL REMARKS

A | L=565 mm, LT=1050 mm, Wt=101.5 kg

L=22.44 inch, LT=41,34 inch, Wt=223.8 lb

B | W=135 mm, L=565 mm, LT=1050 mm, Wt=107.8 kg

W=5.32 inch, L=22.44 inch, LT=41,34 inch, Wt=227.7 lb

C | L=565 mm, LT=1050 mm, Wt=115.1 kg

L=22.44 inch, LT=41,34 inch, Wt=253.8 lb





