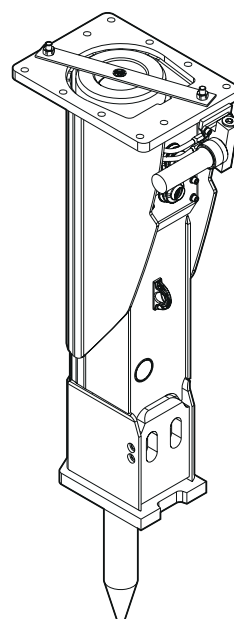


Spare parts list

Hydraulic breakers

RX 14

	Valid from serial number	Valid to serial number
RX 14	DEQ122134	



General information

This spare parts list applies to the following:

Part number	Description
3363116810	Hydraulic breaker RX 14 with CP-Lube

Use only authorized parts. Any damage or malfunction caused by the use of unauthorized parts is not covered by Warranty or Product Liability. Any unauthorized use or copying of the contents or any part thereof is prohibited. This applies in particular to trademarks, model denominations, part numbers, and drawings.

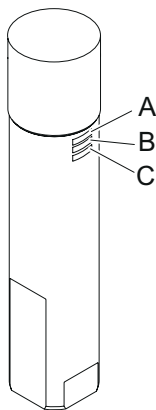
Instructions for use

This spare parts list contains no safety regulations and is merely intended to assist in the ordering of spare parts. For information about operating, servicing, or repairing, the relevant Safety and operating instructions must be consulted at all costs. Please observe the safety instructions listed in the relevant Safety and operating instructions!

Instructions for ordering

It is essential to indicate the serial number of the hydraulic attachment when ordering spare parts! Please note the full identification number of your hydraulic attachment. The code can be found on the main body. Determine the quantity of individual parts which are required and need to be ordered. The order must indicate the following details:

- full identification code of the hydraulic attachment
- required quantity
- part number
- description



- A. Type
- B. Serial number
- C. Main body number

Contents

Service, repair and wear part kits

Kit list	1
----------	---

Mechanical

Hydraulic breaker	3
Percussion unit part 1: Cover	5
Percussion unit part 2: main body complete	7
Automatic lubrication system kit	9
Tightening torques	11
Dimensions	13

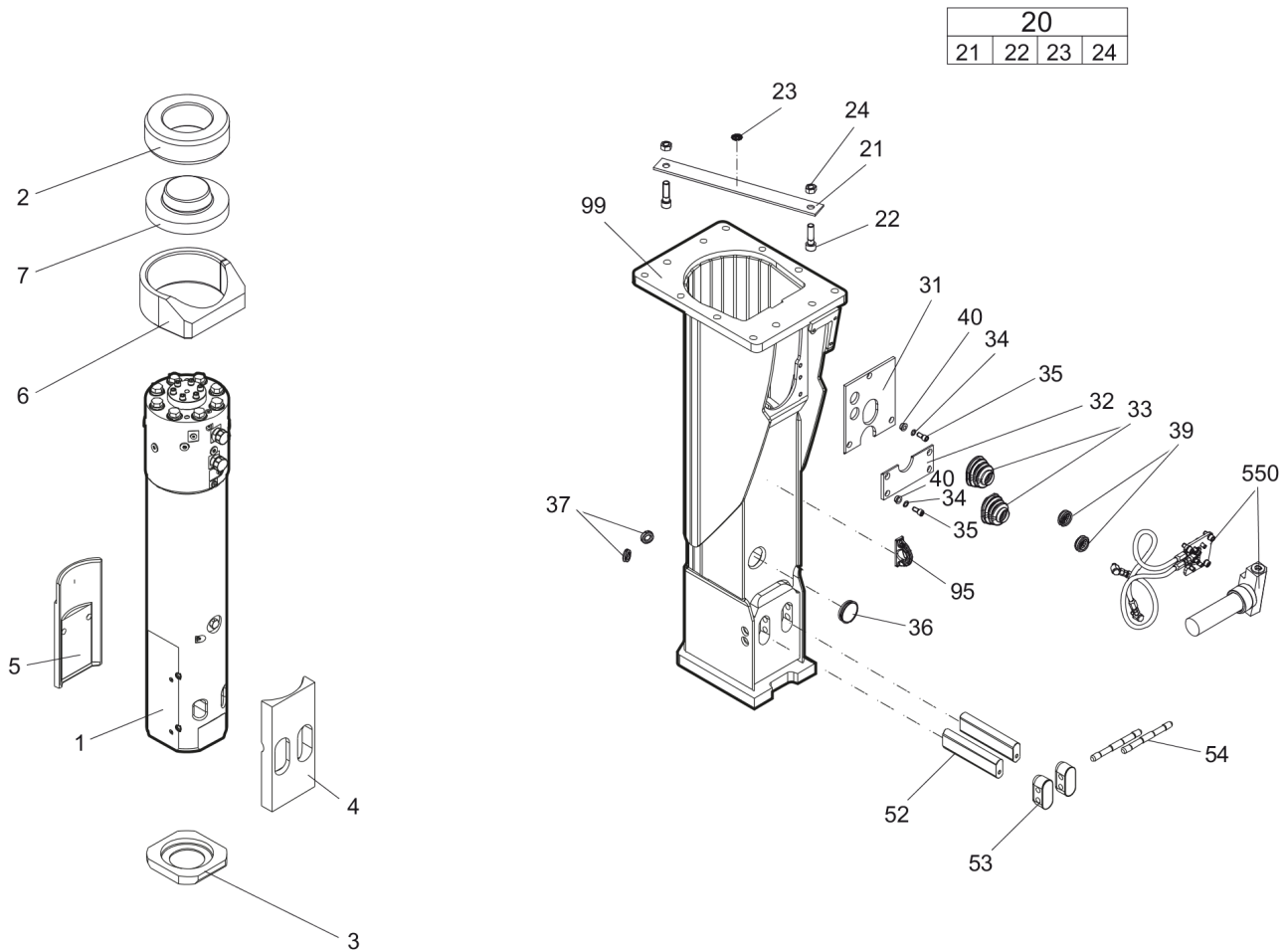
Options / accessories

Hydraulic hoses	14
Optional equipment	17
Working tools	19

Service, repair and wear part kits Kit list

NO EXPLODED VIEW
AVAILABLE
FOR THIS BOM

Item	Part No.	Name	Qty	L
KIT	3363115061	Label kit	1	
KIT	3363110008	Seal kit	1	
101	3361853317	O-ring	1	
107	3360314494	O-ring	1	
160	3360314551	O-ring	2	
182	3360478426	Threaded plug	1	
183	3360175125	O-ring	1	
201	3363109525	Seal	1	
202	3363109527	Back-up ring	1	
203	3363091710	Seal	1	
302	3363110010	Seal	6	
303	3363066582	O-ring	1	
305	3363091711	Seal	1	
306	3363091774	Wiper	1	
307	3363083573	Seal	8	
308	3362267583	Seal	1	
309	3362267581	Seal	1	

Mechanical Hydraulic breaker

Refer to Parts Online for the most up to date information. The printed information might be outdated.

Mon Aug 17 02:06:07 MDT 2015

Item	Part No.	Name	Qty	L
1		Percussion unit	1	A
2	3363104943	Elastic pad	1	
3	3363114493	Shock absorber	1	
4	3363113793	Guide plate	1	
5	3363114491	Guide plate	1	
6	3363109331	Guide ring	1	
7	3363104955	Cap	1	
20(21-24)	3363083731	Transport safety device complete	1	
21		Transport safety device	1	
22	3360026786	Allen screw	2	
23	3363091872	Label transport safety device	1	
24	3360103251	Nut	2	
31	3363111390	Plate	1	B
32	3363111391	Plate	1	C
33	3363104675	Cover	2	
34	3361850596	Pair of lock washers	7	
35	3360103750	Allen screw	7	
36	3362267893	Plug	1	
37	3362267897	Plug	2	
39	3363105987	Plug	2	
40	3363111271	Sleeve	7	
52	3363114486	Retainer bar	2	
53	3363114673	Plug	2	
54	3363114461	Bolt	2	
95	3363111993	Lifting eye	1	D
99	3363114577	Breaker box	1	E
550	3363111490	Automatic lubrication system kit	1	F

Comments for Page: Hydraulic breaker

(L)OCAL REMARKS

A | see separate chapter

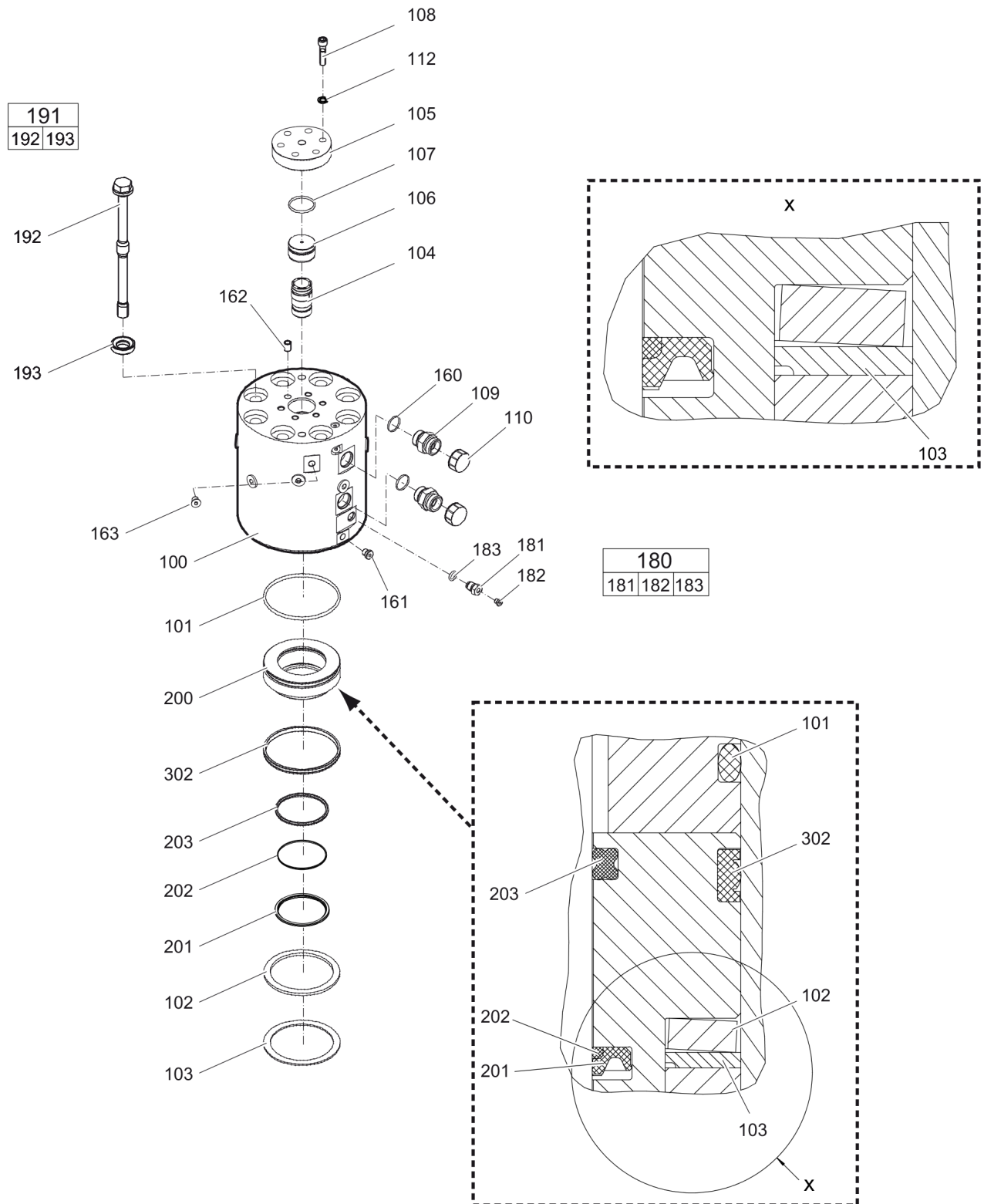
B | with 3 times no. 40

C | with 4 times no. 40

D | professional welding process necessary

E | with item 95

F | see separate chapter

Mechanical Percussion unit part 1: Cover

Refer to Parts Online for the most up to date information. The printed information might be outdated.

Mon Aug 17 02:06:08 MDT 2015

Item	Part No.	Name	Qty	L
100	3363110014	Cover	1	A
101	3361853317	O-ring	1	
102	3363110009	Plate spring	1	
103	3363109431	Disk	1	B
104	3363109417	Main control valve	1	
105	3363109425	Cover	1	
106	3363109419	Cap	1	
107	3360314494	O-ring	1	
108	3360026514	Allen screw	6	
109	3360478190	Fitting	2	C
110	3361353487	Cap	2	
112	3361850596	Pair of lock washers	6	
160	3360314551	O-ring	2	
161	3363066963	Plug, M14 x 1.5 mm	1	
162	3363110012	Threaded insert	6	
163	3360478439	Threaded plug	1	
180(181-183)	3363087286	Filling valve complete	1	
181		Filling valve	1	
182	3360478426	Threaded plug	1	
183	3360175125	O-ring	1	
191(192-193)	3363110057	Bolt complete	8	
192		Bolt	1	
193	3363109423	Washer	1	
200	3363109415	Seal bush	1	
201	3363109525	Seal	1	
202	3363109527	Back-up ring	1	
203	3363091710	Seal	1	
302	3363110010	Seal	1	

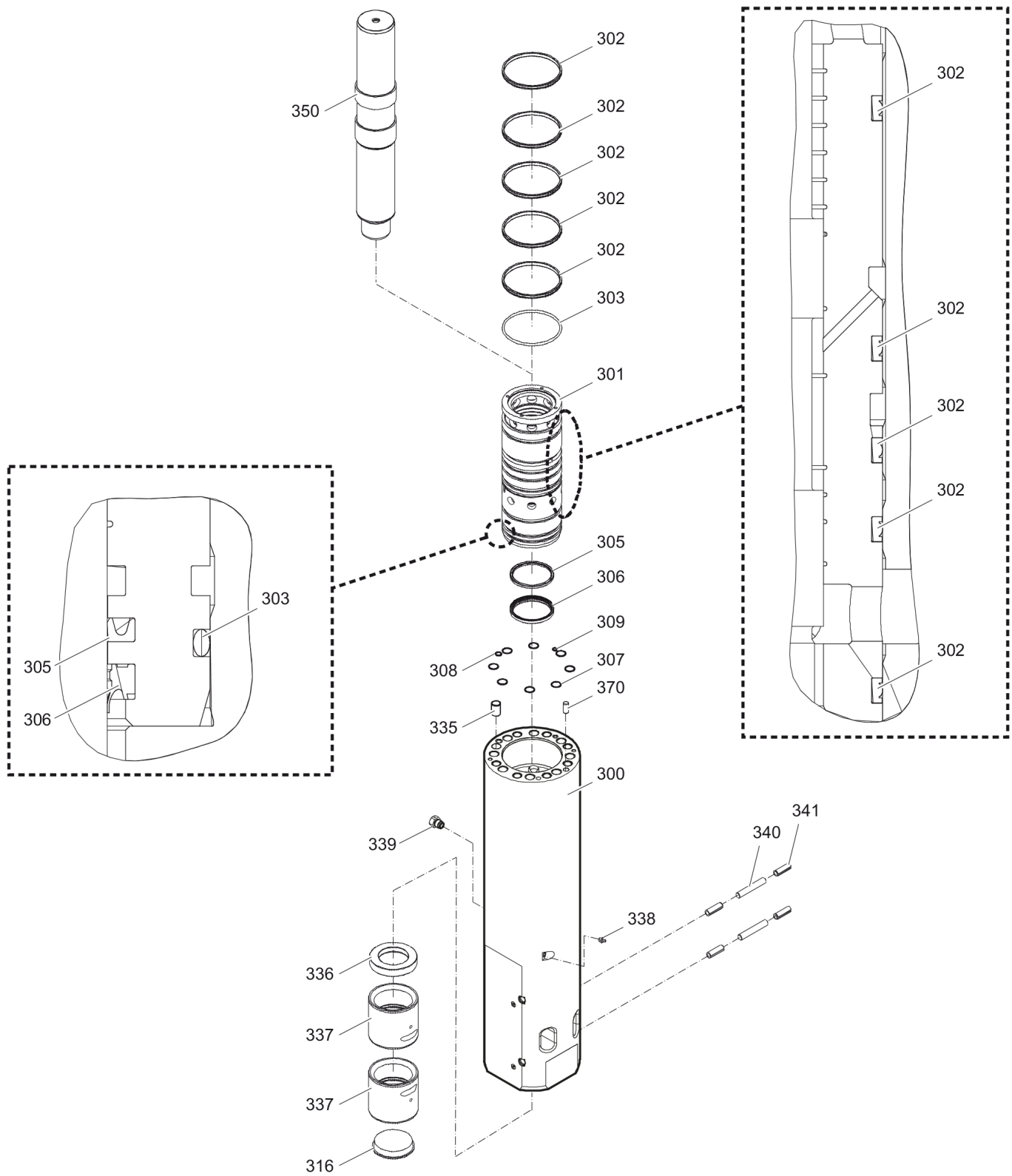
Comments for Page: Percussion unit part 1: Cover

(L)OCAL REMARKS

A | with item 161 - 163

B | observe mounting direction

C | with item 160

Mechanical Percussion unit part 2: main body complete

Refer to Parts Online for the most up to date information. The printed information might be outdated.

Mon Aug 17 02:06:09 MDT 2015

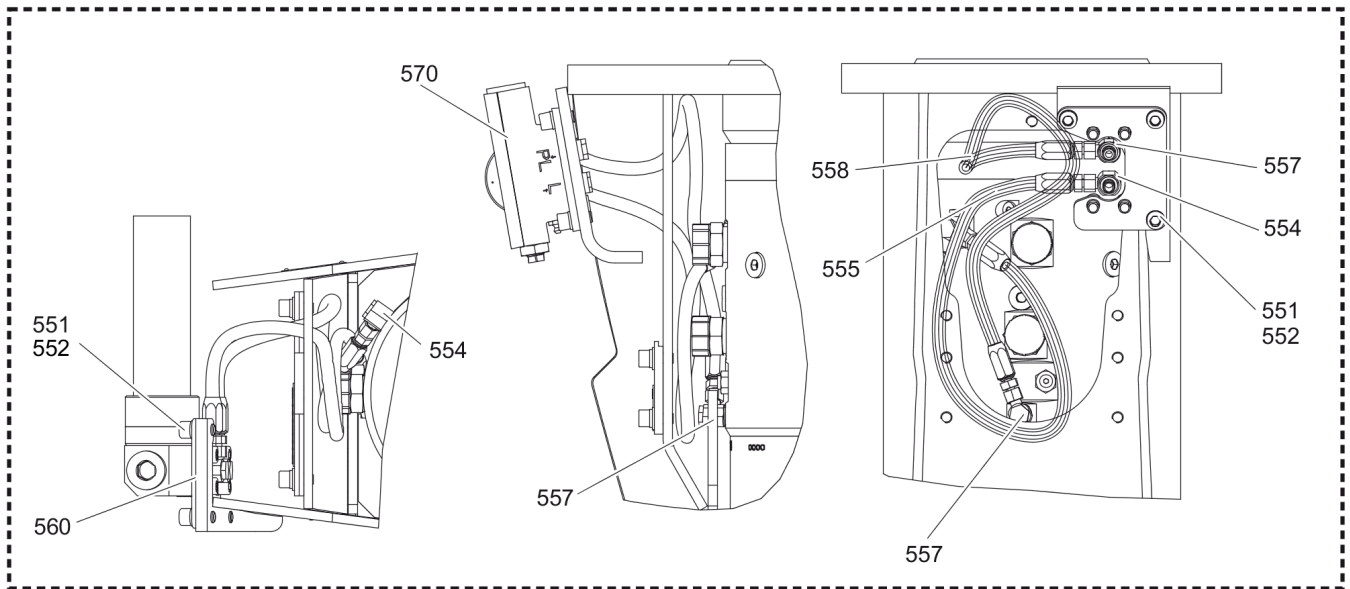
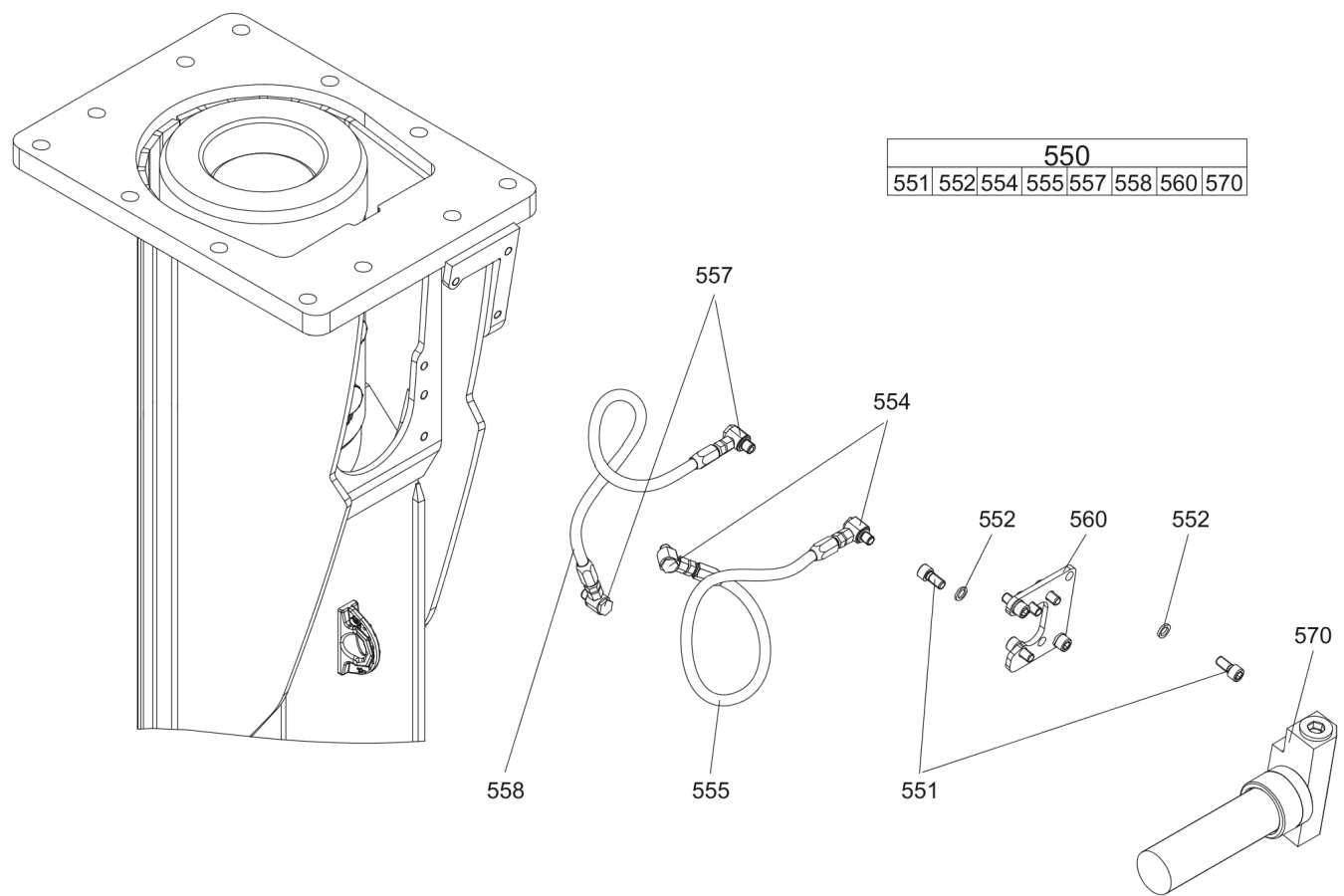
Item	Part No.	Name	Qty	L
300	3363114612	Main body	1	A
301	3363111433	Cylinder bush	1	
302	3363110010	Seal	5	
303	3363066582	O-ring	1	
305	3363091711	Seal	1	
306	3363091714	Wiper	1	
307	3363083573	Seal	8	
308	3362267583	Seal	1	
309	3362267581	Seal	1	
316	3363031713	Protective cap	1	
335	3363110011	Threaded insert	8	
336	3363109427	Impact ring	1	
337	3363109429	Wear bush	2	
338	3360433774	Grease nipple	1	
339	3363109435	Non return valve, G1/2 in.	1	
340	3362261509	Pin	2	
341	3363091201	Spring dowel sleeve	4	
350	3363110051	Percussion piston	1	
370	3360106784	Lock pin	1	

Comments for Page: Percussion unit part 2: main body complete

(L)OCAL REMARKS

A | with item 335 - 341

Mechanical Automate lubrication system kit



Item	Part No.	Name	Qty	L
550(551-570)		Automatic lubrication system kit	1	
551	3360103750	Allen screw	7	A
552	3361850596	Pair of lock washers	7	
554	3363066233	Fitting	2	B
555	3363083873	Hydraulic hose	1	C
557	3363066234	Fitting	2	D
558	3363087394	Hydraulic hose	1	E
560	3363110411	Support	1	
570	3363110530	Automatic lubrication system	1	F

Comments for Page: Automatc lubrication system kit

(L)OCAL REMARKS

A | secure all 4 Allen screws with Loctite 243 screwed in the CP-Lube

B | secure with Loctite 243

C | Grease line

secure with Loctite 243

Route the hydraulic hoses as shown on the drawing. It must be ensured that the hydraulic hoses can move freely and are not in contact at any point.

D | secure with Loctite 243

E | Oil line

secure with Loctite 243

Route the hydraulic hoses as shown on the drawing. It must be ensured that the hydraulic hoses can move freely and are not in contact at any point.

F | CP-Lube

Mechanical Tightening torques

NO EXPLODED VIEW
AVAILABLE
FOR THIS BOM

Item	Part No.	Name	Qty	L
35	-	Allen screw - 85 Nm		A
108	-	Allen screw - 85 Nm		B
109	-	Fitting - 120 Nm		C
181	-	Filling valve - 130 Nm		D
182	-	Threaded plug - 20 Nm		E
192	-	Bolt		F
339	-	Non-return valve - 200 Nm		G
551	-	Allen screw - 85 Nm		H
554	-	Fitting - 45 Nm		I
555	-	Hydraulic hose, grease line - 16 Nm		J
557	-	Fitting - 55 Nm		K
558	-	Hydraulic hose, oil line - 42 Nm		L

Comments for Page: Tightening torques

(L)OKAL REMARKS

A | Allen key size 10

B | Allen key size 10

C | Open-end wrench size 41

D | Socket spanner size 22

E | Allen key size 5

F | Torque wrench or Power wrench size 32

1. Pre-tighten the bolts to 100 Nm, proceeding in a crosswise fashion,
2. pre-tighten the bolts to 100 Nm again, proceeding in a crosswise fashion,
3. then tighten each bolt through 90° (1 ½ sides of hexagonal head) in a crosswise fashion,
4. finally tighten each bolt again through 90° (1 ½ sides of hexagonal head) in a crosswise fashion.

G | Socket wrench size 27

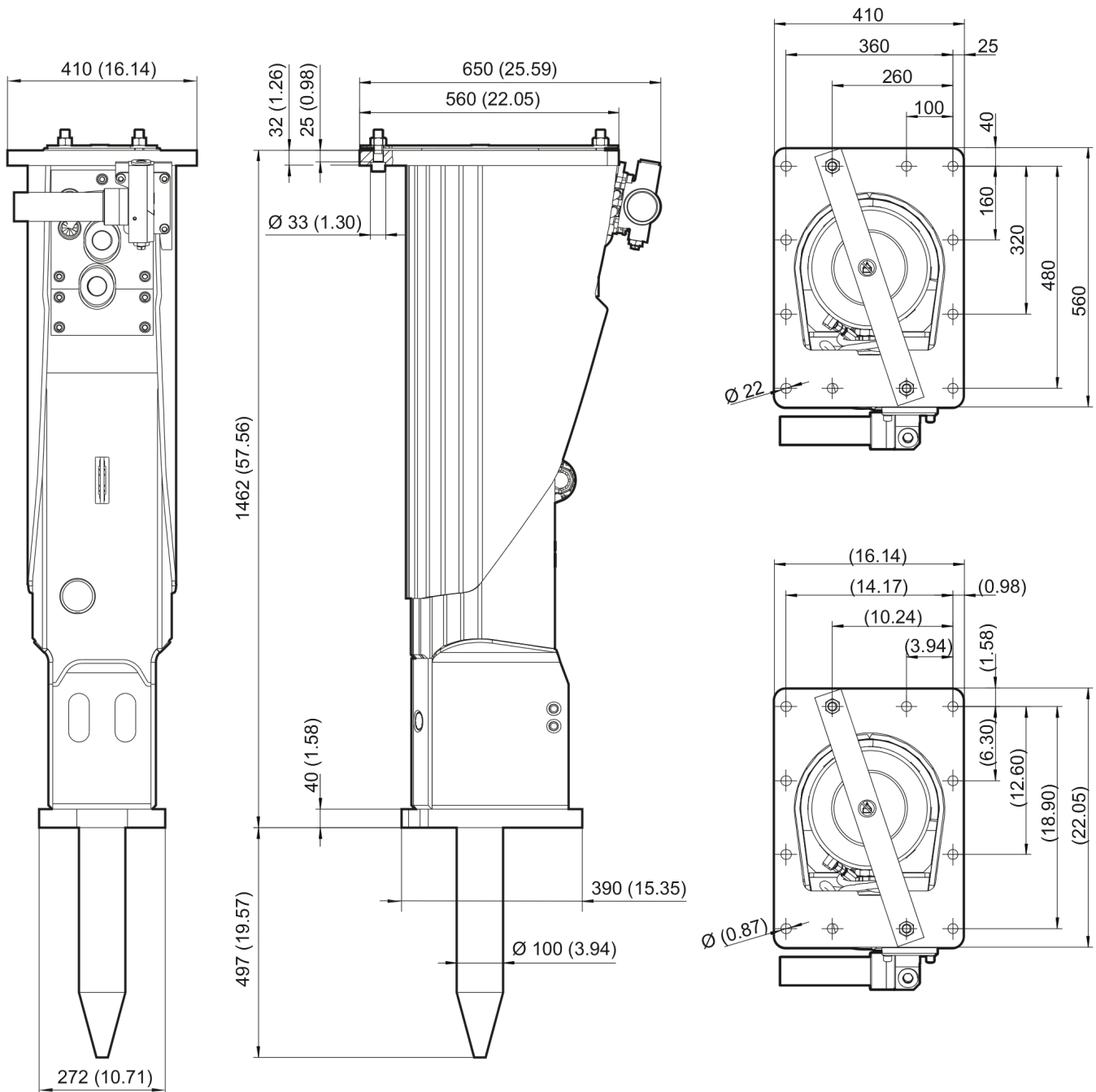
H | Allen key size 10

I | Open-end wrench size 17, 19, 22

J | Open-end wrench size 17

K | Open-end wrench size 19, 22

L | Open-end wrench size 19

Mechanical Dimensions

Refer to Parts Online for the most up to date information. The printed information might be outdated.

Mon Aug 17 02:06:11 MDT 2015

This page intentionally left blank

Options / accessories Hydraulic hoses

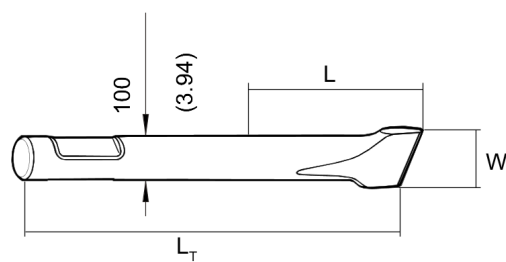
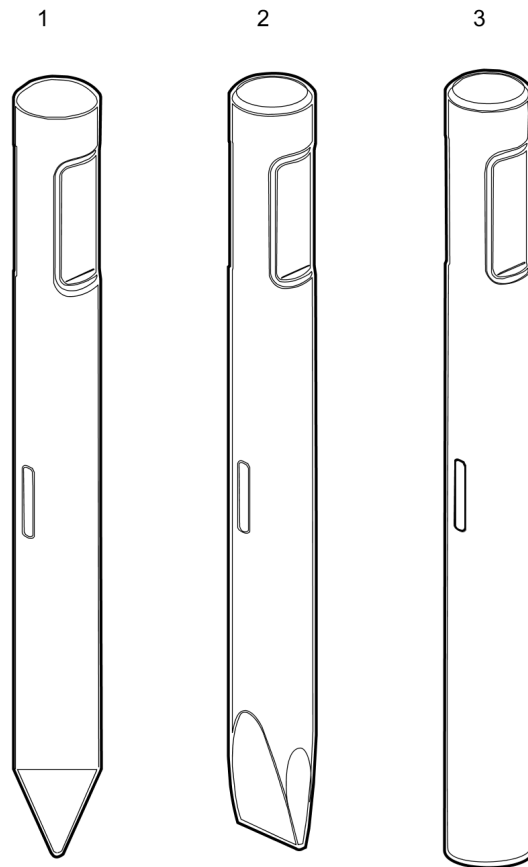
NO EXPLODED VIEW
AVAILABLE
FOR THIS BOM

Item	Part No.	Name	Qty	L
-	3360332294	Hydraulic hose, I.D. 20 (0.79 in.), both ends M36 x 2 mm conical seal 24°, length 2,300 mm (90.5 in.)	2	
-	3363085947	Hydraulic hose, I.D. 20 (0.79 in.), both ends M36 x 2 mm conical seal 24°, length 2,800 mm (110.2 in.)	2	

Options / accessories Optional equipment

NO EXPLODED VIEW
AVAILABLE
FOR THIS BOM

Item	Part No.	Name	Qty	L
-	3363094910	Chisel paste cartridge for grease gun and automatic lubrication system, 30 x 500 g (1.1 lbs)	1	
-	3363034567	Grease gun for 500 g cartridge	1	
-	3363491004	Service box with nitrogen cylinder, 2 l, 0.43 gal (0.53 US gal)	1	
-	3363094940	Service box without nitrogen cylinder	1	
-	3362235293	Test gauge lower wear bush	1	
-	3363094952	Inside callipers upper wear bush	1	
Not Shown	-	Adapter plate matching the carrier. Consult the Chicago Pneumatic Customer Center/Dealer in your area.	1	
-	3363100695	Base plate with through borings	1	
-	3363094574	Bolt kit	1	
-	3360209253	Allen key (19 mm)	1	
-	3363104953	Dust wiper	1	

Options / accessories Working tools

Item	Part No.	Name	Qty	L
1	4211105538	Moil point		A
2	4211105539	Chisel (cross)		B
3	4211105536	Blunt tool		C

Comments for Page: Working tools

(L)OKAL REMARKS

A | L=495 mm, LT =895 mm, Wt=48.7 kg

L=19.49 inch, LT=35.24 inch, Wt=107.4 lb

B | W=100 mm, L=495 mm, LT=895 mm, Wt=51.1 kg

W=3.94 inch, L=19.49 inch, LT=35.24 inch, Wt=112.6 lb

C | L=495 mm, LT=895 mm, Wt=53.5 kg

L=19.49 inch, LT=35.24 inch, Wt=117.9 lb

