

# CPPG 7.5P HP S5 ESF



## Spare Parts List Power Generator

CPPG 7.5P HP S5 ESF s/n ESF999999 -

Engine:



## General information

This spare parts list applies to the following:

Part number	Description
8170023187	CPPG 7.5P HP S5
8170023188	CPPG 7.5P HP S5
8170023189	CPPG 7.5P HP S5

Use only authorized parts. Any damage or malfunction caused by the use of un authorized parts is not covered by Warranty or Product Liability. Any unauthorized use or copying of the contents or any part thereof is prohibited. This applies in particular to trademarks, model denominations, part numbers, and drawings.

### Instructions for use

This spare parts list contains no safety regulations and is merely intended to assist in the ordering of spare parts.

For information about operating, servicing, or repairing, the relevant Safety and operating instructions must be consulted at all costs.

Please observe the safety instructions listed in the relevant Safety and operating instructions!

**Service**

Engine oil - Genoil - 5W40	1
Engine oil - Genoil 15W40	3
Service pack 300h	5

**Mechanical**

1636320202_00 Frame & mounts CPPG7.5 P	7
1636320134_00 Frame & mounts CPPG7,5P AD	9
1636320200_00 Frame & mounts CPPG7,5P D	11

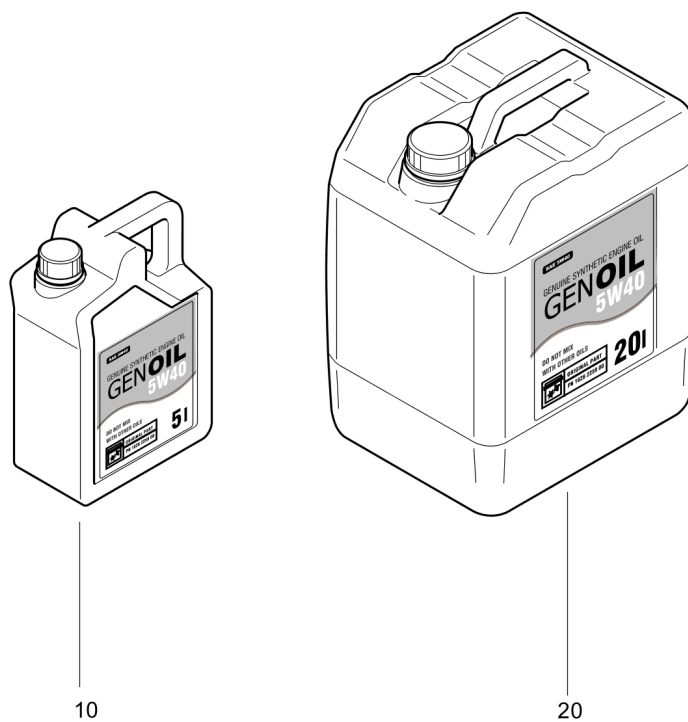
**Engine**

1636320126_00 Engine and accessories Honda GX390	13
--	----

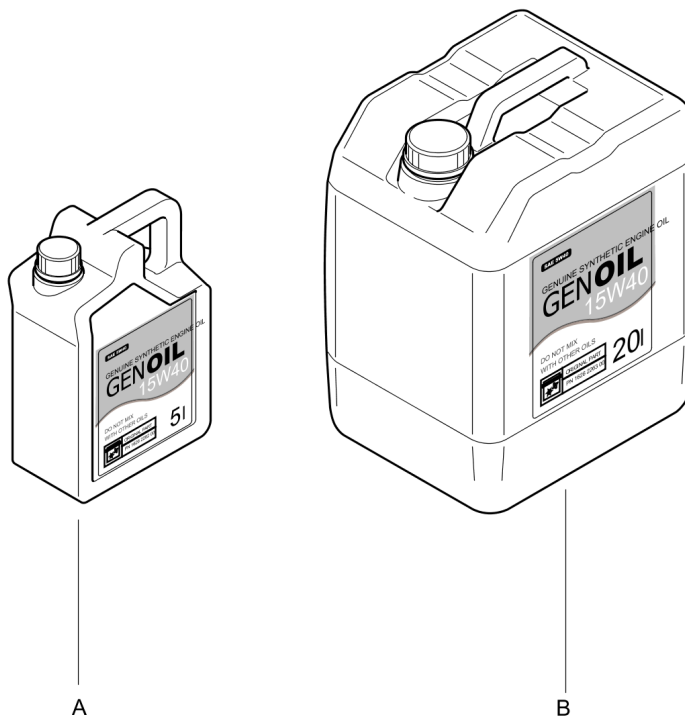
**Electric System**

1636320175_00 Alternator and accessories CPPG7.5P AD	15
1636320161_00 Alternator and accessories	17



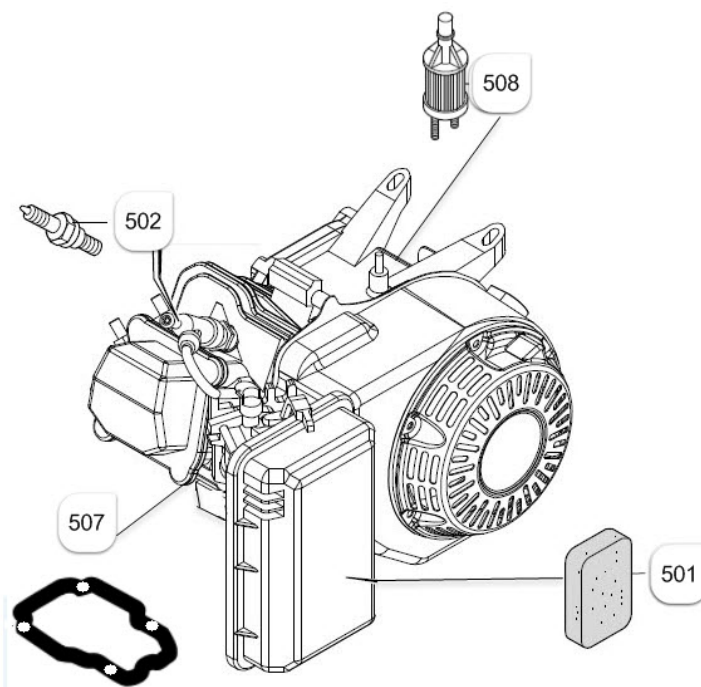
**Service** Engine oil - Genoil - 5W40

Item	Part No.	Name	Qty	L
10	1626225800	Can Genoil 5W40 5 Liter/1.32 Gallon	1	
20	1626225900	Can Genoil 5W40 20 Liter/5.3 Gallon	1	

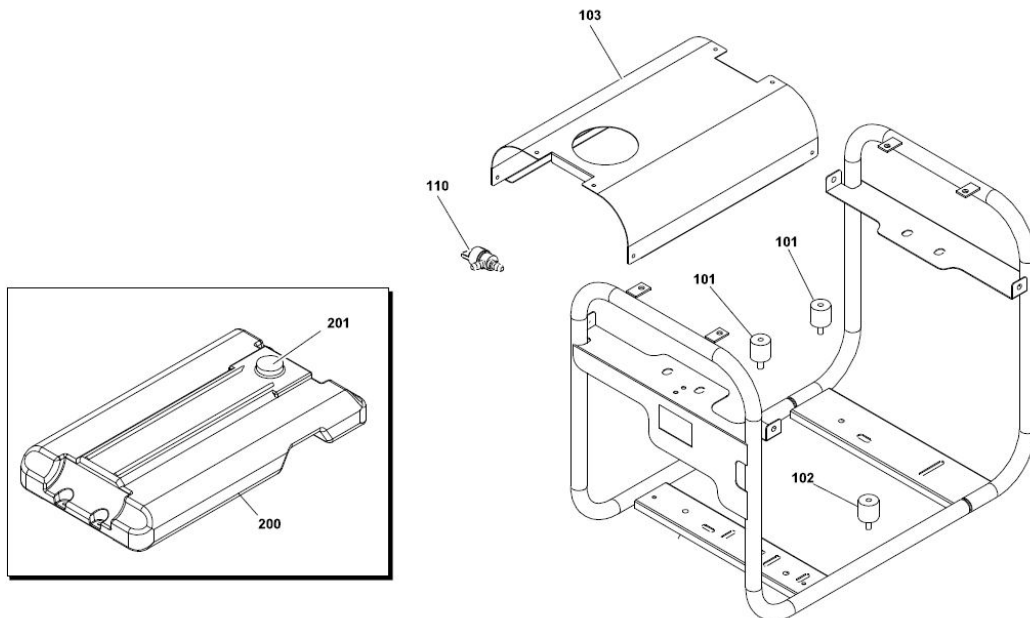
**Service** Engine oil - Genoil 15W40

Item	Part No.	Name	Qty	L
A	1626226200	Can Genoil 15W40 5 Liter/1.32 Gallon	1	
B	1626226300	Can Genoil 15W40 20 Liter/5.3 Gallon	1	

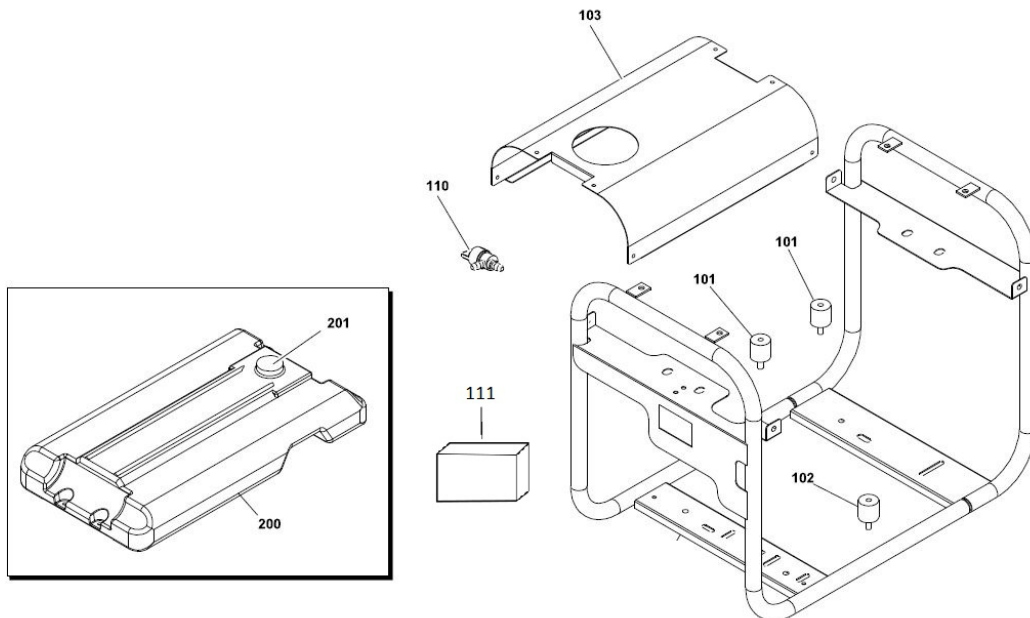


**Service** Service pack 300h

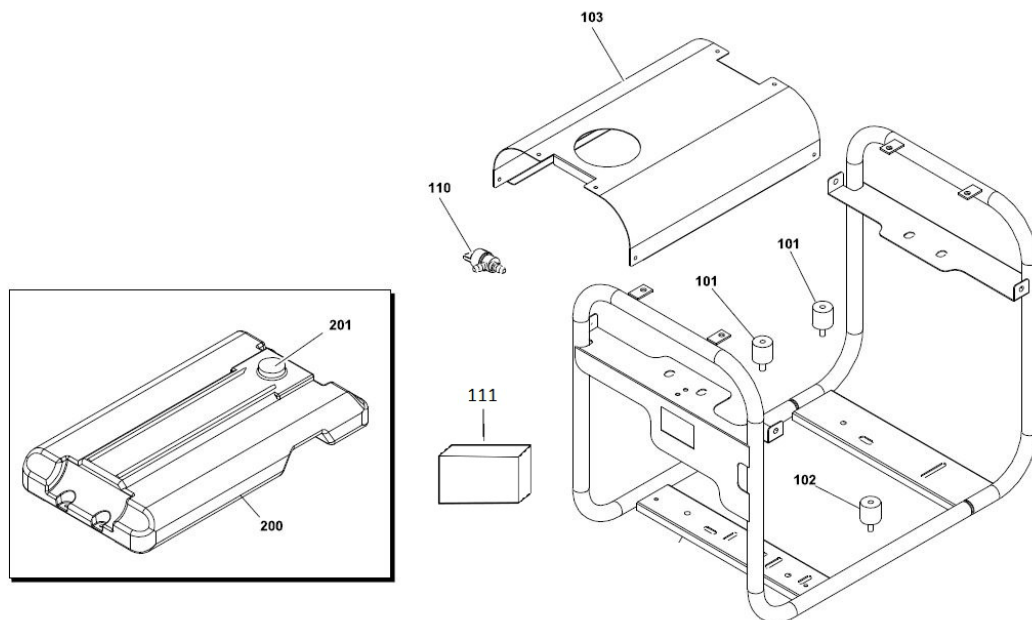
Item	Part No.	Name	Qty	L
-	1636310409	Service pack 300h		
501	1636301491	Air filter	1	
502	1636301616	Spark plug	1	
507	1636301806	Rocker cover gasket	1	
508	1636301807	Fuel filter	1	

**Mechanical** 1636320202\_00 Frame & mounts CPPG7.5 P

Item	Part No.	Name	Qty	L
101	1636301619	Silent-block	2	
102	1636301620	Silent-block	1	
103	1636301950	Plate	1	
110	1636302060	Fuel valve	1	
200	1636301447	Fuel tank	1	
201	1636301448	Fuel cap	1	

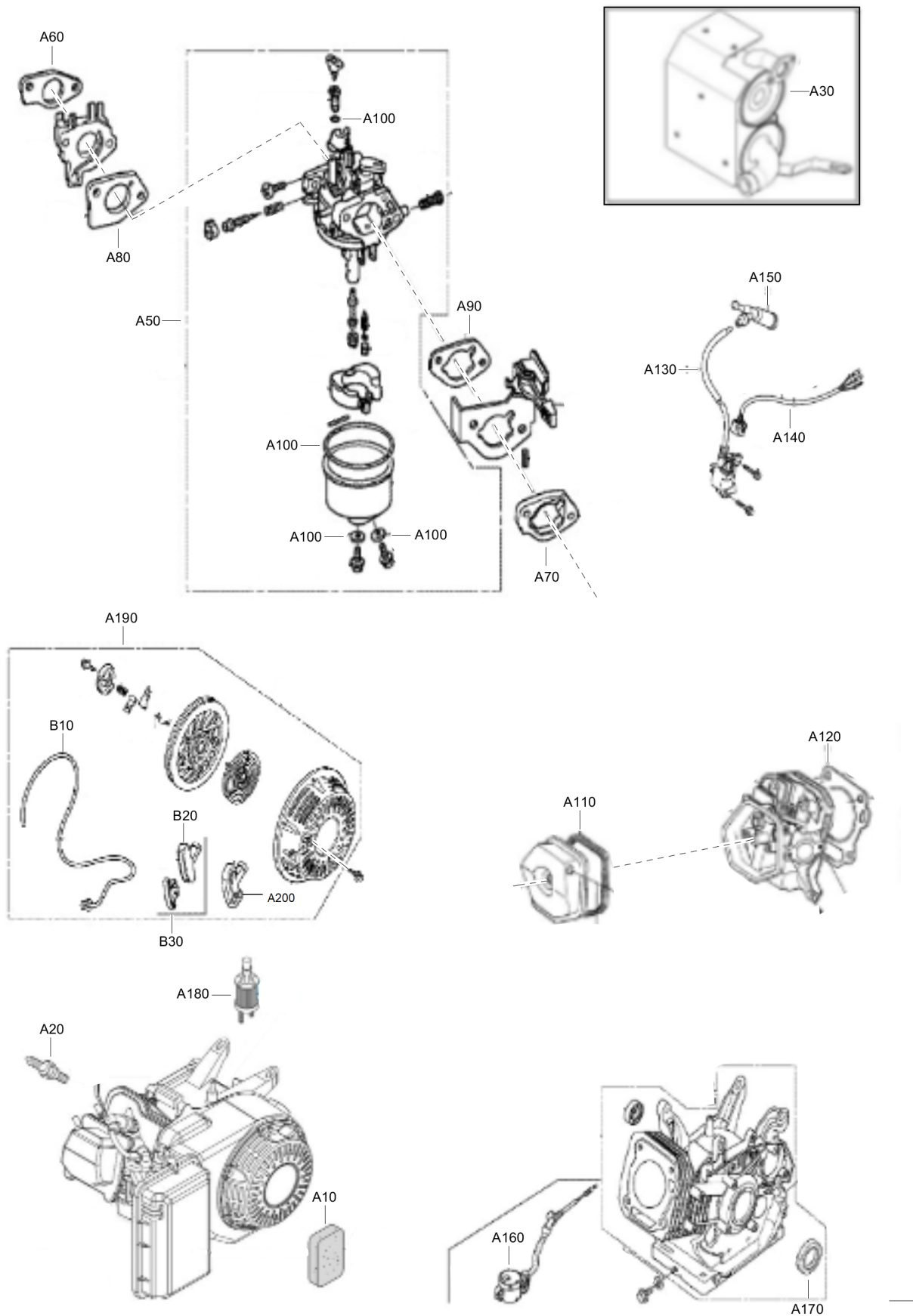
**Mechanical** 1636320134\_00 Frame & mounts CPPG7,5P AD

Item	Part No.	Name	Qty	L
101	1636301619	Silent-block	2	
102	1636301506	Silent-block	1	
103	1636301950	Plate	1	
110	1636302060	Fuel valve	1	
111	1636301805	Earth leakage circuit breaker	1	
200	1636301447	Fuel tank	1	
201	1636301448	Fuel cap	1	

**Mechanical** 1636320200\_00 Frame & mounts CPPG7,5P D

Item	Part No.	Name	Qty	L
101	1636301619	Silent-block	2	
102	1636301620	Silent-block	1	
103	1636301950	Plate	1	
110	1636302060	Fuel valve	1	
111	1636301818	Earth leakage relay	1	
200	1636301447	Fuel tank	1	
201	1636301448	Fuel cap	1	

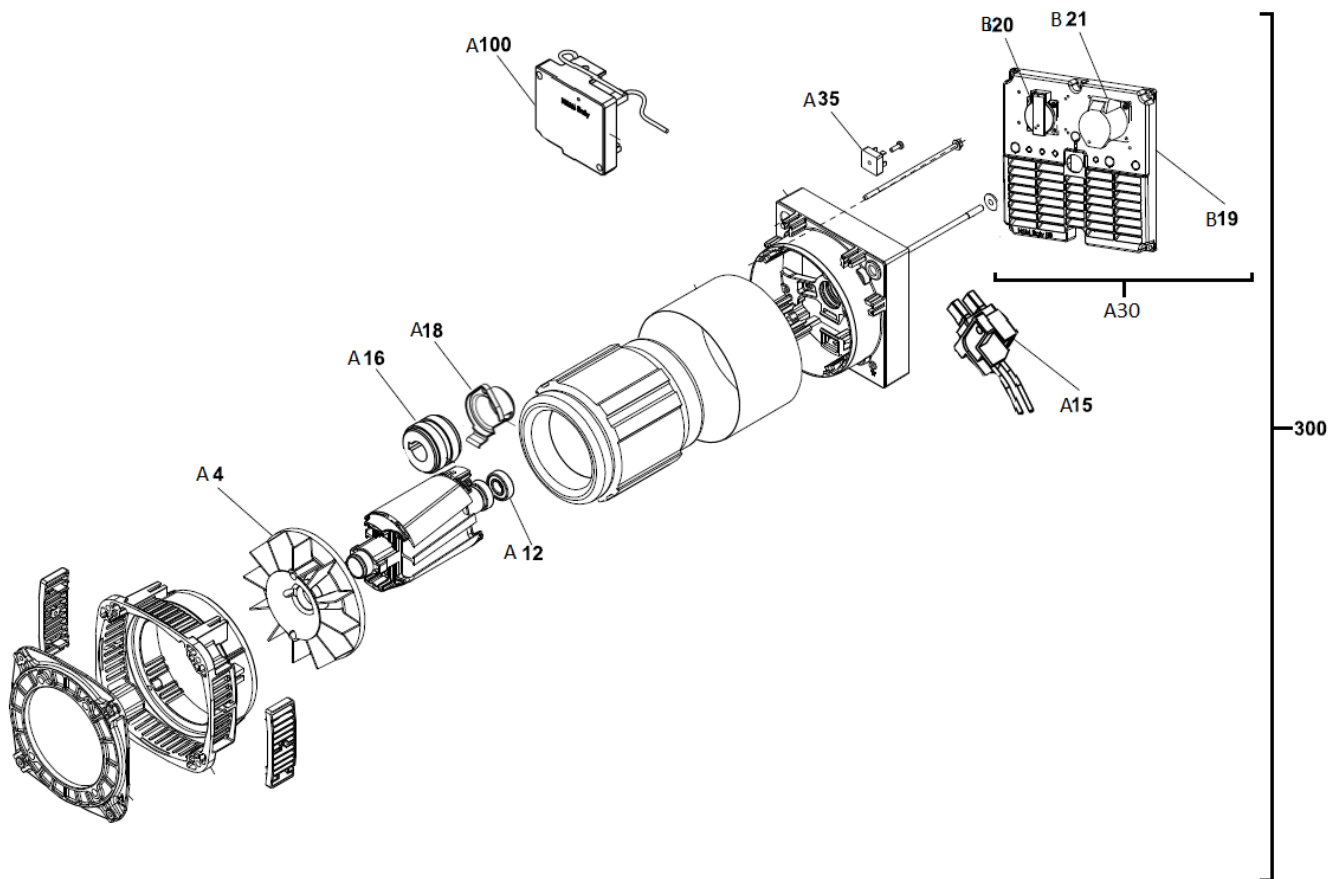


**Engine** 1636320126\_00 Engine and accessories Honda GX390

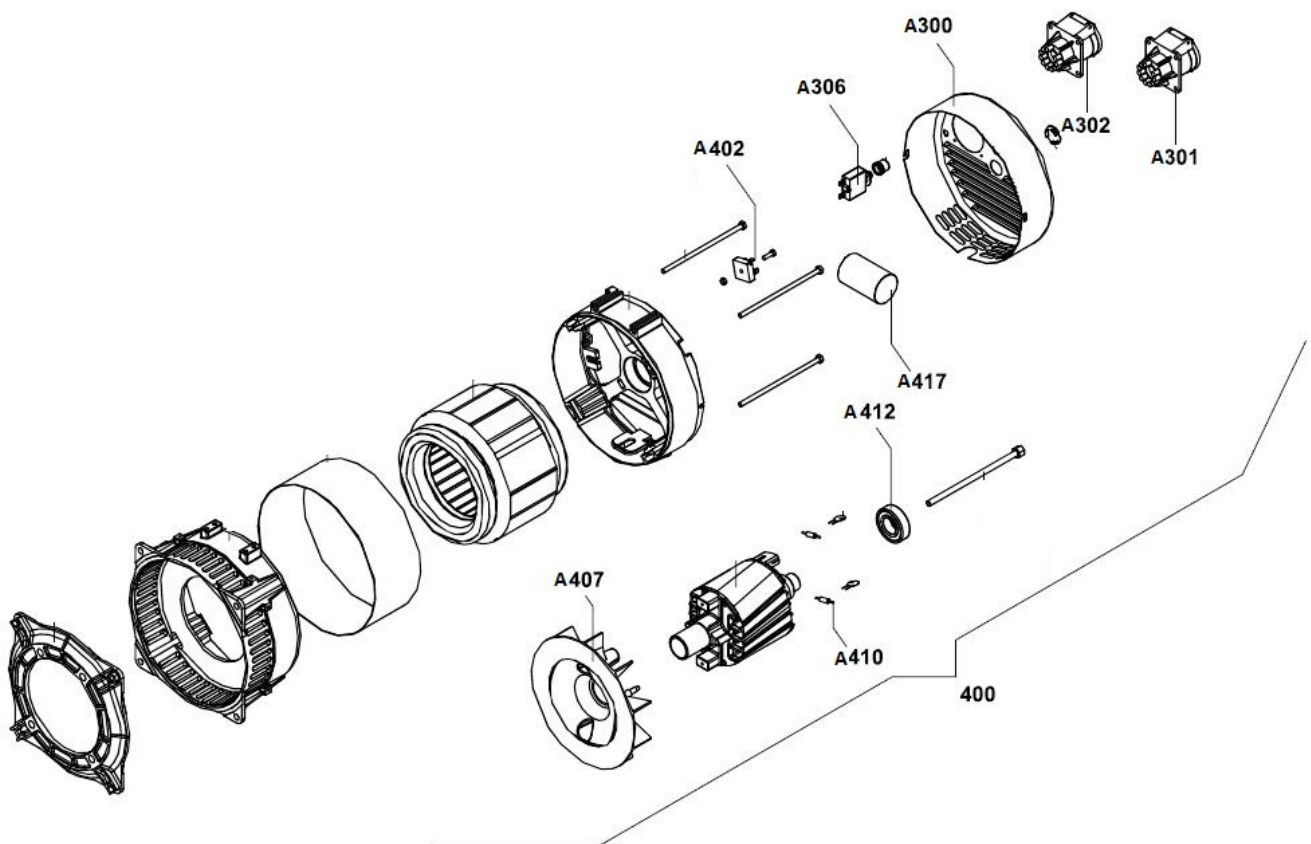
Refer to Parts Online for the most up to date information. The printed information might be outdated.

Thu Mar 25 07:05:33 UTC 2021

Item	Part No.	Name	Qty	L
10	1636304301	Engine GX390T2	1	
A10	1636301491	Air filter	1	
A20	1636301616	Spark plug	1	
A30	1636301548	Muffler	1	
A50	1636304307	Carburetor assembly	1	
A60	1636304308	Carburetor insulator gasket	1	
A70	1636304319	Carburetor spacer gasket	1	
A80	1636304309	Carburetor gasket	1	
A90	1636304310	Air cleaner gasket	1	
A100	1636304311	Gasket set	1	
A110	1636301806	Rocker cover gasket	1	
A120	1636304312	Cylinder head gasket	1	
A130	1636301973	Sparck plug cable	1	
A140	1636304313	Wire harness assembly	1	
A150	1636304314	Noise supressor cap	1	
A160	1636301968	Switch oil pessure	1	
A170	1636304315	Oil seal	2	
A180	1636301807	Fuel filter	1	
A190	1636304302	Recoil starter assembly	1	
B10	1636304303	Rope recoil starter	1	
B20	1636304304	Grip starter	1	
B30	1636304305	Grip reinforcement starter	1	
A200	1636304627	Choke compressor	1	

**Electric System** 1636320175\_00 Alternator and accessories CPPG7.5P AD

Item	Part No.	Name	Qty	L
300	1636301550	Alternator	1	
A4	1636301481	Fan	1	
A12	1636301544	Bearing	1	
A15	1636301496	Brush holders	1	
A16	1636301497	Bearing plastic cover	1	
A18	1636301498	Bearing plastic cover	1	
A30	1636301499	Cover with Sockets	1	
B19	1636301518	Cover without sockets	1	
B20	1636301450	Socket schuko 16a	1	
B21	1636304413	Socket 1ph 32a	1	
A35	1636301611	Electric handling	1	
A100	1636301505	AVR	1	

**Electric System** 1636320161\_00 Alternator and accessories

Item	Part No.	Name	Qty	L
400	1636301573	Alternator	1	
A300	1636301572	Cover	1	
A301	1636301450	Socket schuko 16a	1	
A302	1636301549	Socket	1	
A306	1636301530	Circuit breaker	1	
A402	1636301574	Bridge rectifier	1	
A407	1636301578	Fan	1	
A410	1636301580	Diode	1	
A412	1636301582	Rear bearing	1	
A417	1636301585	Capacitor	1	