

**CPPG 3i Bp S5 50Hz 230V ESF
s/n ESF999999 -**

Spare Parts List : Power Generators

Mechanical

Frame assembly

Appearance cover

1

3

Engine

Engine

Crankcase

Crankcase cover

Cylinder head

Muffler

Protector muffler

Carburetor

Air cleaner

Fuel tank

Rotor stator

5

7

9

11

13

15

17

19

21

23

Electric system

Control panel

Starter subassembly

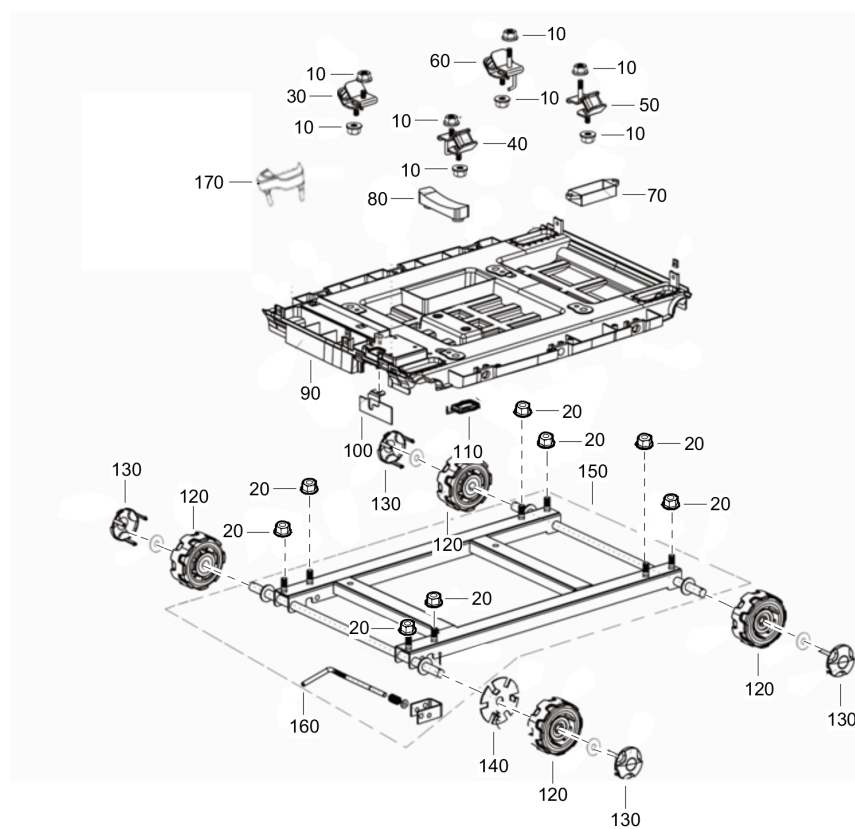
Inverter assembly

25

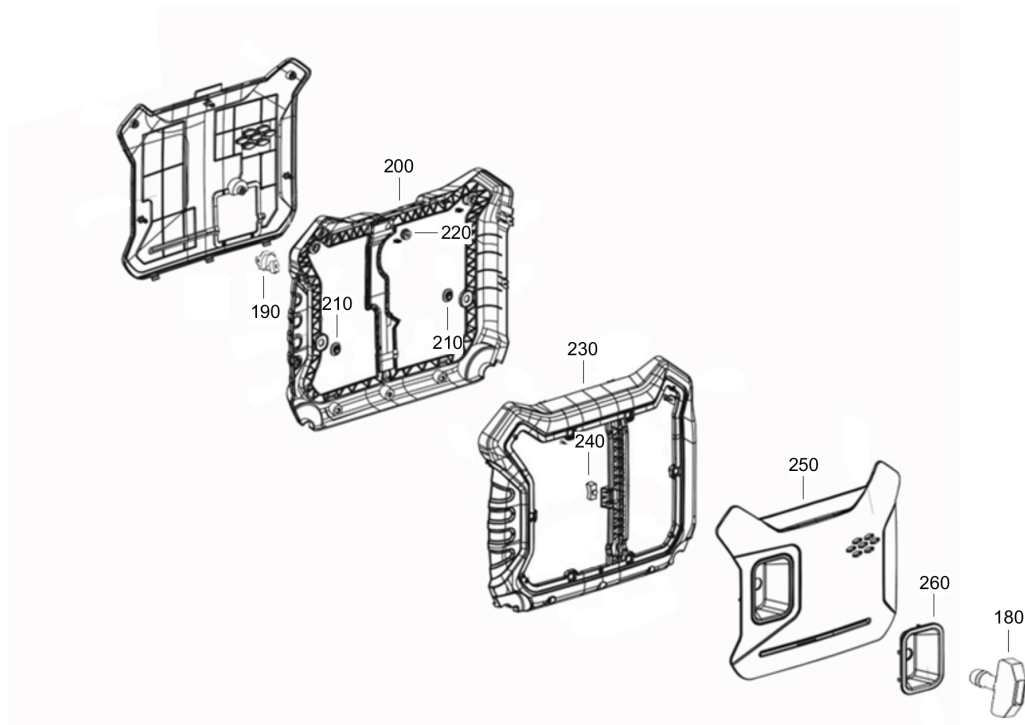
27

29

Options

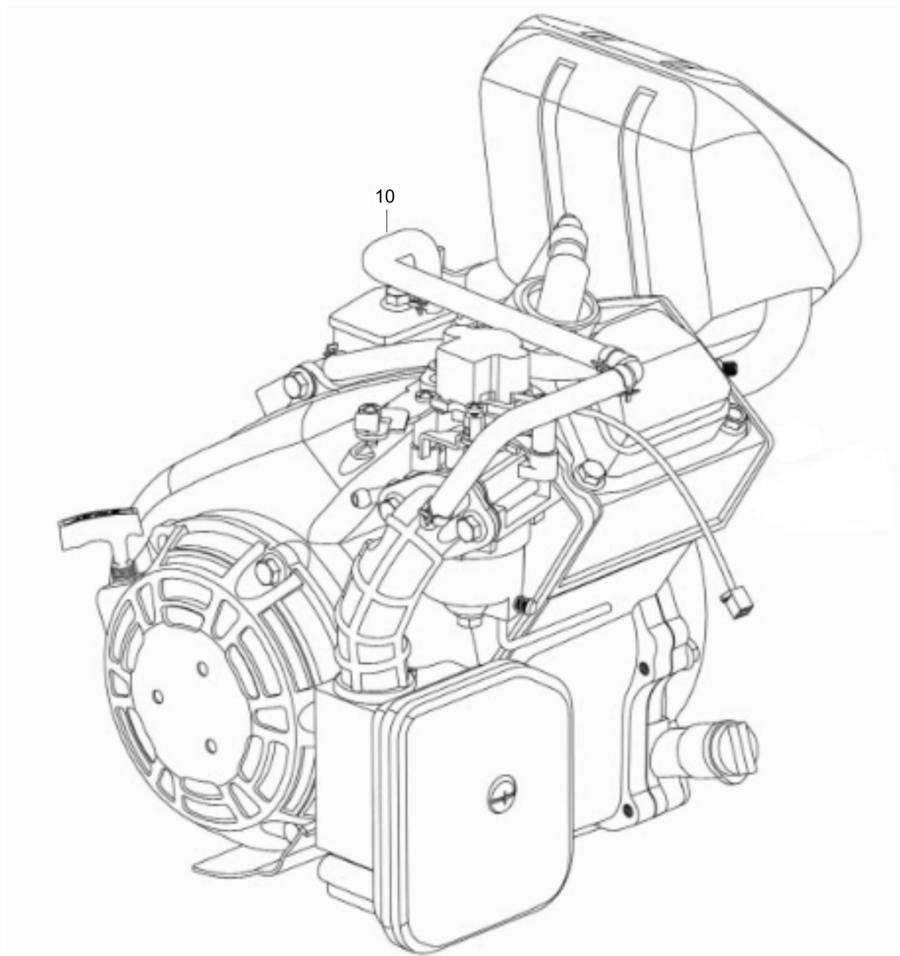
Mechanical Frame assembly

Item	Part No.	Name	Qty	L
10	1636302283	Hexagon nut with flange	8	
20	1636302296	Hexagon nut with flange	8	
30	1636302556	Machine buffering seat	1	
40	1636302557	Machine buffering seat	1	
50	1636302558	Machine buffering seat	1	
60	1636302559	Machine buffering seat	1	
70	1636302560	Lighter	1	
80	1636302561	Cushioning rubber	1	
90	1636302562	Frame component backplane	1	
100	1636302563	Support wheel stop block	1	
110	1636302564	Caulking	1	
120	1636302565	Components of supporting wheel	4	
130	1636302566	Support wheel dust cap	1	
140	1636302567	Lock disc of machine set supporting wheel shaft	1	
150	1636302568	Components of frame	1	
160	1636302569	Support wheel stop arm	1	
170	1636303365	Drain rubber	1	

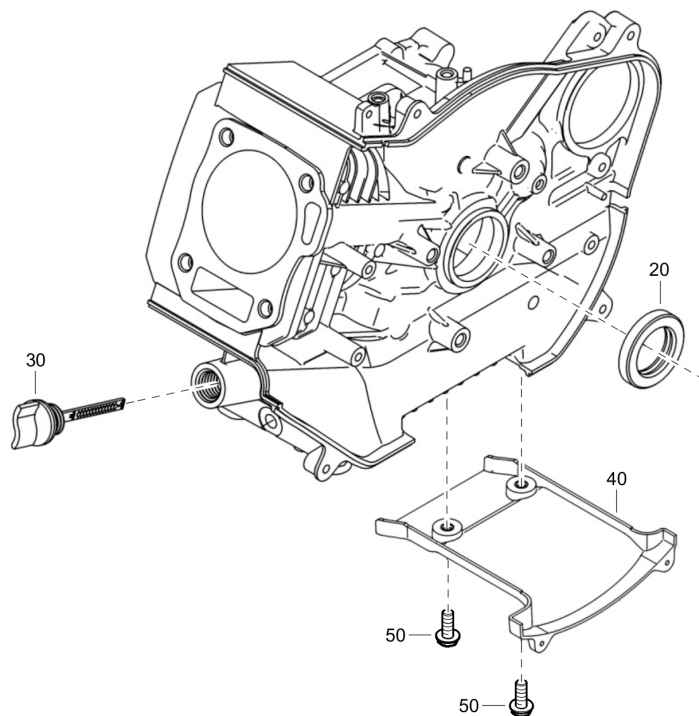
Mechanical Appearance cover

Item	Part No.	Name	Qty	L
180	1636303520	Pull rope handle	1	
190	1636303364	Cushioning rubber	1	
200	1636302576	Generator shell (Left)	1	
210	1636302463	Tank damping cushion	2	
220	1636302462	Tank damping cushion	1	
230	1636302577	Generator shell (right)	1	
240	1636303363	Cushioning rubber	1	
250	1636303355	Exterior cover (Right)	1	
260	1636302579	Recoil hand shank cover	1	

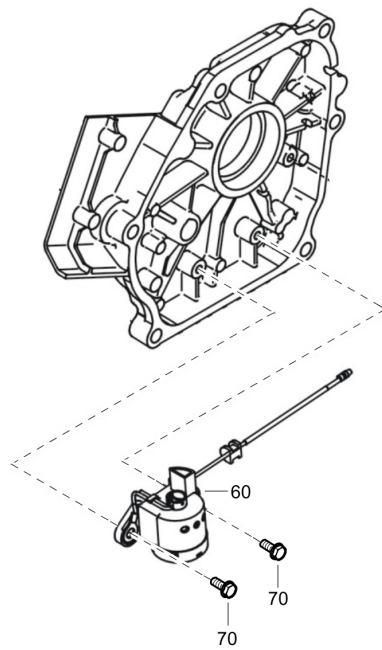
Engine Engine



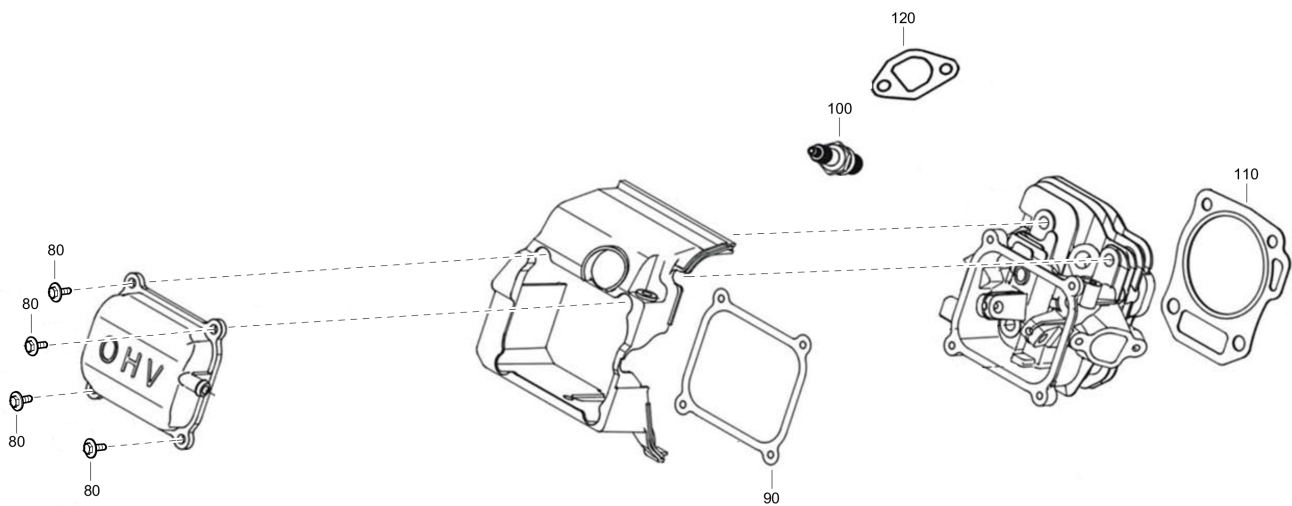
Item	Part No.	Name	Qty	L
10	1636303347	Engine assembly	1	

Engine Crankcase

Item	Part No.	Name	Qty	L
20	1636300605	Oil seal	1	
30	1636302507	Oil rule combination	1	
40	1636302545	Side plate	1	
50	1636303324	Hexagon bolt with flange	2	

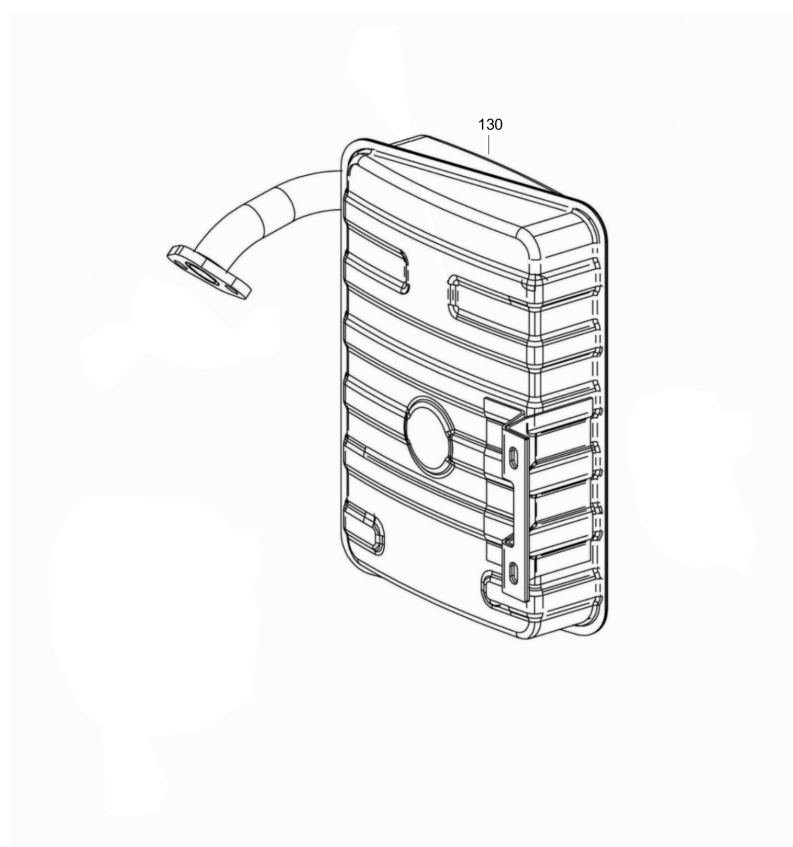
Engine Crankcase cover

Item	Part No.	Name	Qty	L
60	1636304158	Oil level sensor	1	
70	1636303324	Hexagon bolt with flange	2	

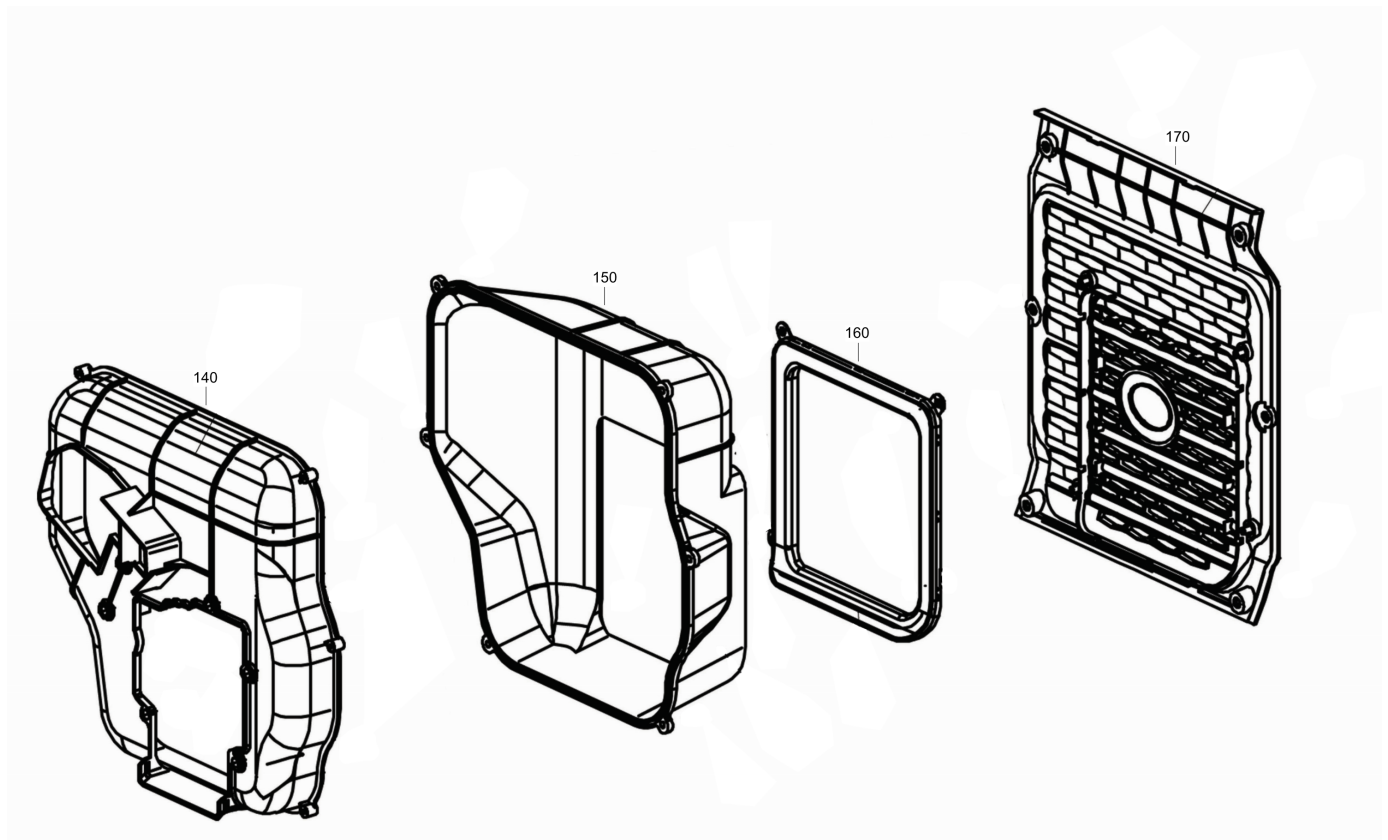
Engine Cylinder head

Item	Part No.	Name	Qty	L
80	1636303324	Hexagon bolt with flange	4	
90	1636302506	Gasket for cylinder head cover	1	
100	1636300603	Spark plug	1	
110	1636304157	Gasket for cylinder head	1	
120	1636300639	Outlet gasket	1	

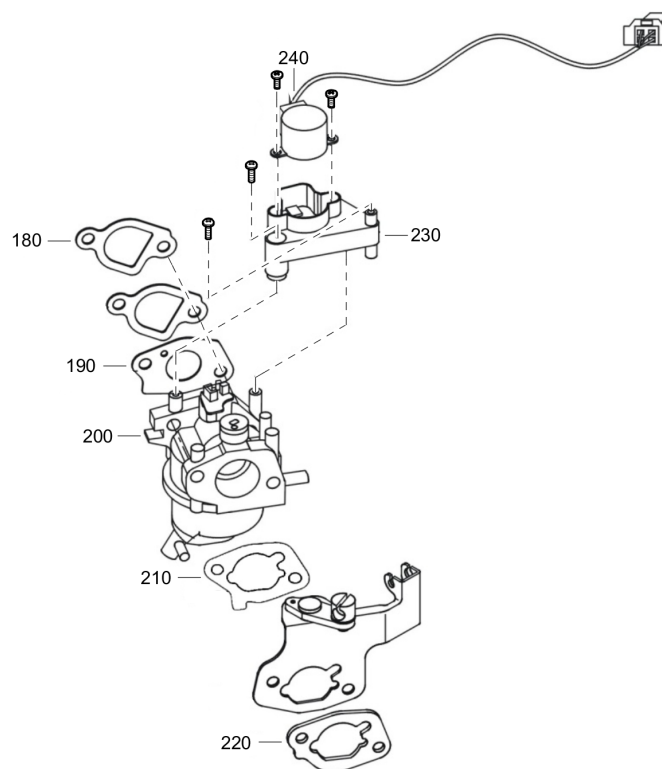
Engine Muffler



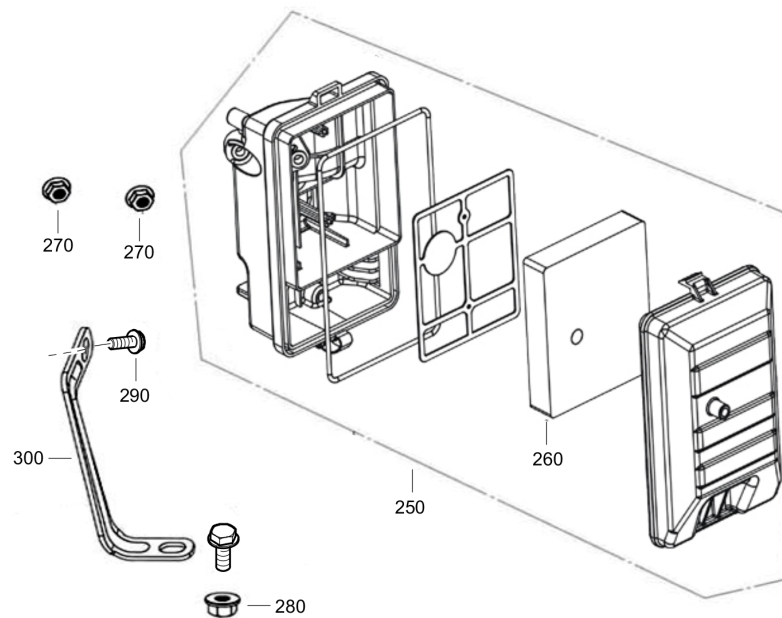
Item	Part No.	Name	Qty	L
130	1636303777	Muffler body	1	

Engine Protector muffler

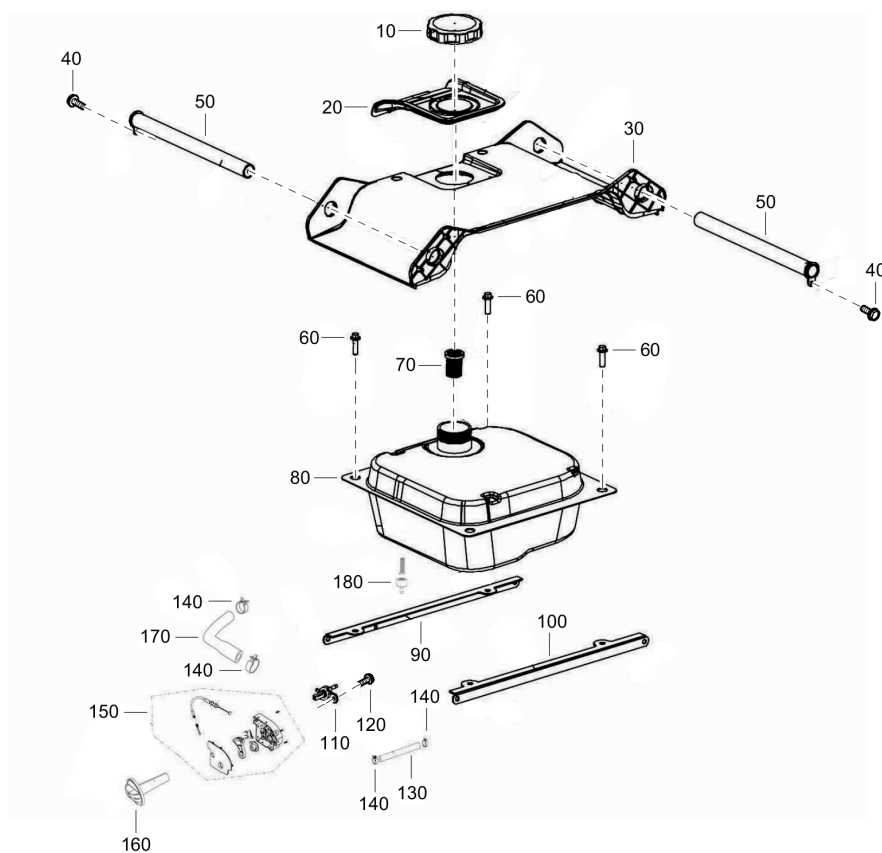
Item	Part No.	Name	Qty	L
140	1636302570	Muffler guard shield	1	
150	1636302571	Muffler guard shield	1	
160	1636302572	Wind scooper	1	
170	1636302573	Shutter	1	

Engine Carburetor

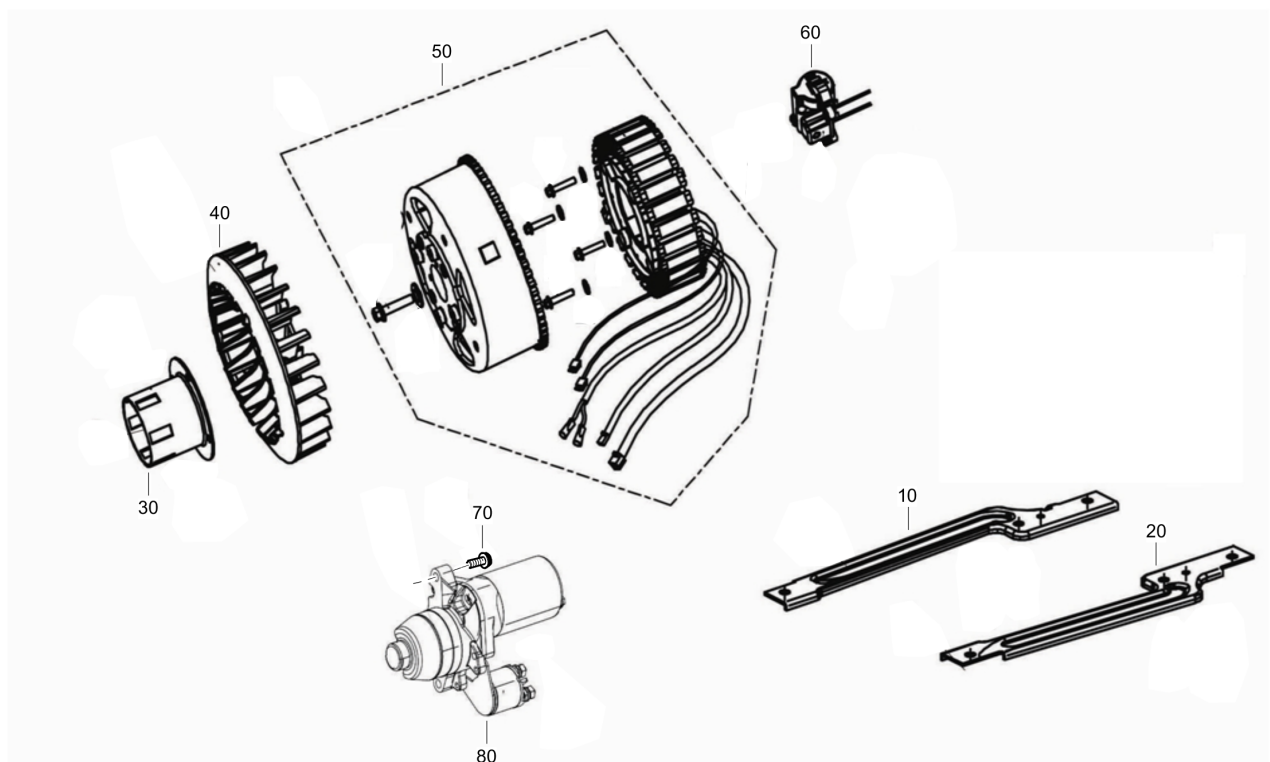
Item	Part No.	Name	Qty	L
180	1636300623	Carburetor gasket	1	
190	1636300625	Carburetor gasket	1	
200	1636302509	Carburetor	1	
210	1636304159	Carburetor gasket	1	
220	1636304160	Carburetor gasket	1	
230	1636302580	Mounting bracket of speed-regulated step motor	1	
240	1636302458	Speed regulator	1	

Engine Air cleaner

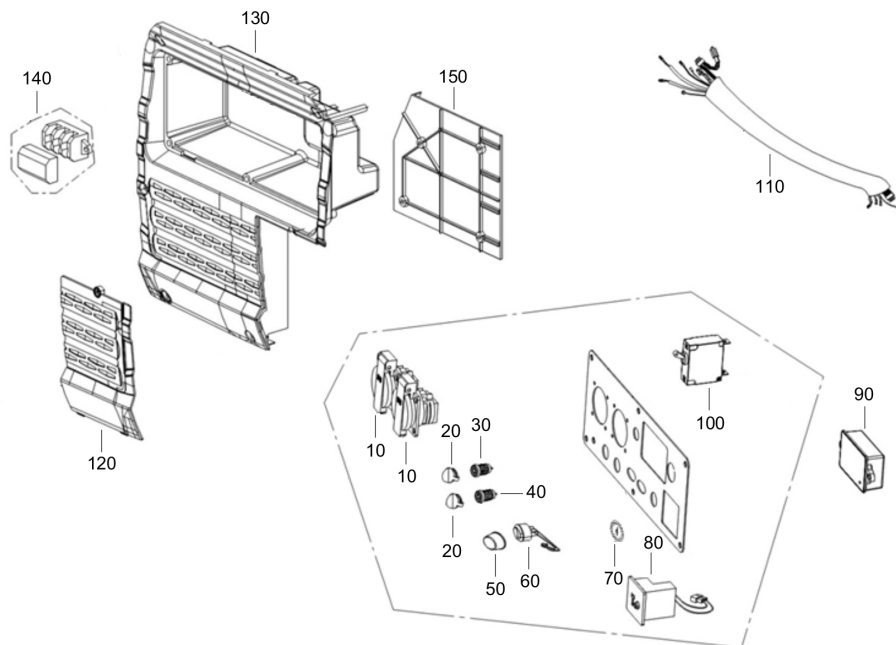
Item	Part No.	Name	Qty	L
250	1636302510	Air filter	1	
260	1636304161	Air filter element	1	
270	1636302285	Hexagon nut with flange	2	
280	1636302299	Hexagon nut with flange	1	
290	1636302323	Hexagon bolt with flange	1	
300	1636303351	Air filter bracket	1	

Engine Fuel tank

Item	Part No.	Name	Qty	L
10	1636302526	Tank cover	1	
20	1636302527	Rubber lagging for pouring orifice	1	
30	1636302528	Frame top cover	5	
40	1636302323	Hexagon bolt with flange	6	
50	1636302529	Lever combination	2	
60	1636302287	Hexagon bolt with flange	4	
70	1636302530	Pouring orifice filter screen combination	1	
80	1636302531	Tank	1	
90	1636302532	Tank install support Left	1	
100	1636302533	Tank install support Right	1	
110	1636302534	Components of oil switch	1	
120	1636302323	Hexagon bolt with flange	1	
130	1636302535	Oil tube	1	
140	1636303361	Clip combination	4	
150	1636302536	Combination Switch	1	
160	1636302537	Oil switch knob	1	
170	1636302538	Oil tube	1	
180	1636303362	Tank oilout	1	

Engine Rotor stator

Item	Part No.	Name	Qty	L
10	1636302539	Engine Support plate	1	
20	1636302540	Engine Support plate	1	
30	1636302541	Starting disc	1	
40	1636302542	Motor fan	1	
50	1636302543	Components of motor	1	
60	1636302544	Coil assembly ignition	1	
70	1636302323	Hexagon bolt with flange	3	
80	1636302546	Components of starting motor	1	

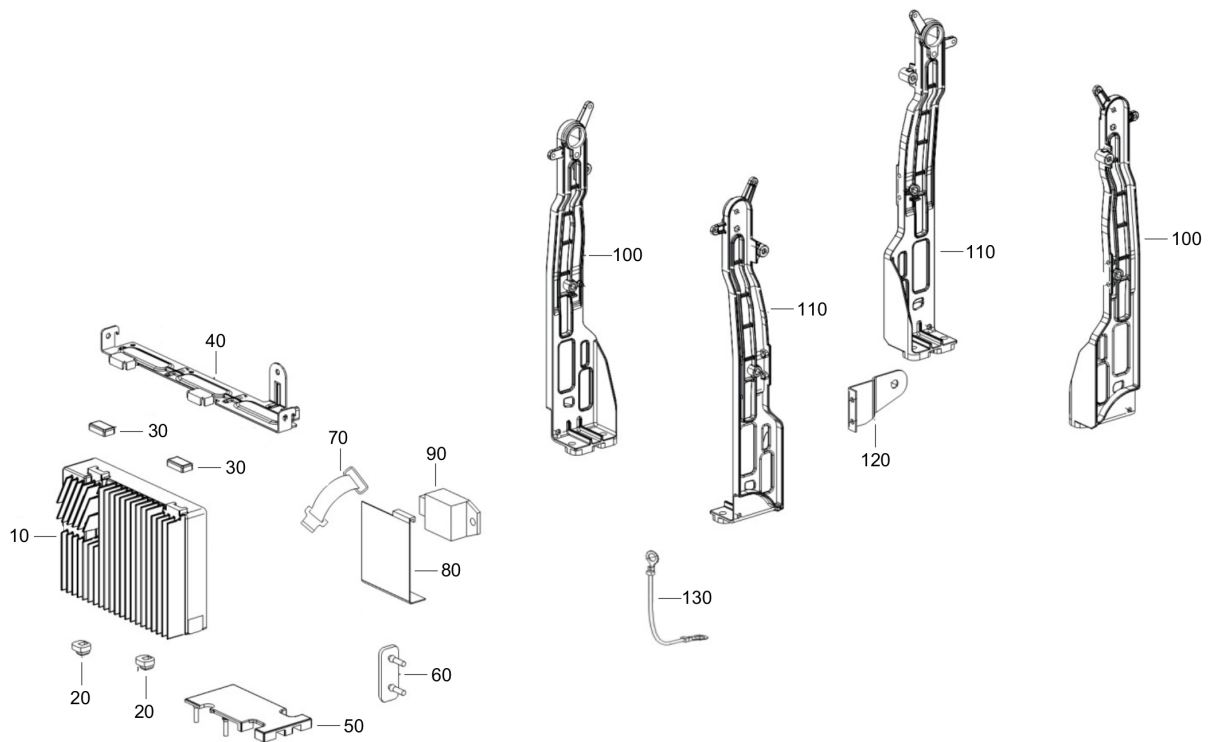
Electric system Control panel

Item	Part No.	Name	Qty	L
10	1636300961	Power socket combination	2	
20	1636302500	Button cover	2	
30	1636302501	Grid socket(red)	1	
40	1636302502	Grid socket(black)	1	
50	1636302498	Tarpaulin	1	
60	1636304162	Idle switch	1	
70	1636303434	Start control switch	1	
80	1636302503	Dc socket	1	
90	1636303348	Multifunctional indicating meter	1	
100	1636302550	Overcurrent protector	1	
110	1636303518	Control panel harness	1	
120	1636302552	Battery maintainance cover	1	
130	1636302553	Panel bed	1	
140	1636302554	Line connection	1	
150	1636302555	Inverter inlet air deflector	1	

Electric system Starter subassembly



Item	Part No.	Name	Qty	L
90	1636302508	Fan cover component	1	

Electric system Inverter assembly

Item	Part No.	Name	Qty	L
10	1636302513	Inverter assembly	1	
20	1636302514	Cushioning rubber	2	
30	1636302515	Cushioning rubber	2	
40	1636302516	Inverter mounting bracket	1	
50	1636302517	Cushioning rubber	1	
60	1636302519	Battery Cushion	1	
70	1636302520	Strap	1	
80	1636302521	Battery baffle	1	
90	1636302522	Self control constant current charger	1	
100	1636302523	Vertical skeleton frame	2	
110	1636302524	Vertical skeleton frame	2	
120	1636302525	Rope Support	1	
130	1636303350	Earth wire of general-purpose engine	1	