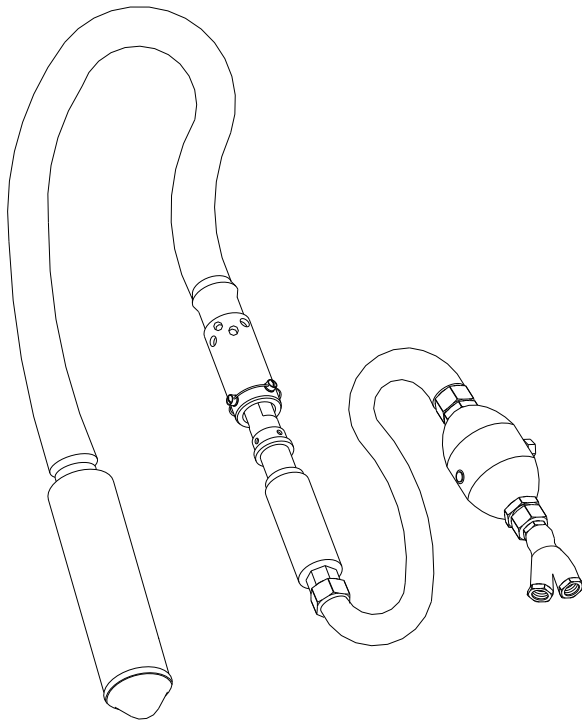




Spare Parts List

CP 2190 Vibrator



www.cp.com

 **Chicago
Pneumatic**

2005-09
No. 9800 0541 01

© Copyright
Stockholm, Sweden

Contents**Pages**

General information.....	4
Exploded views and tables	6-9

GENERAL INFORMATION

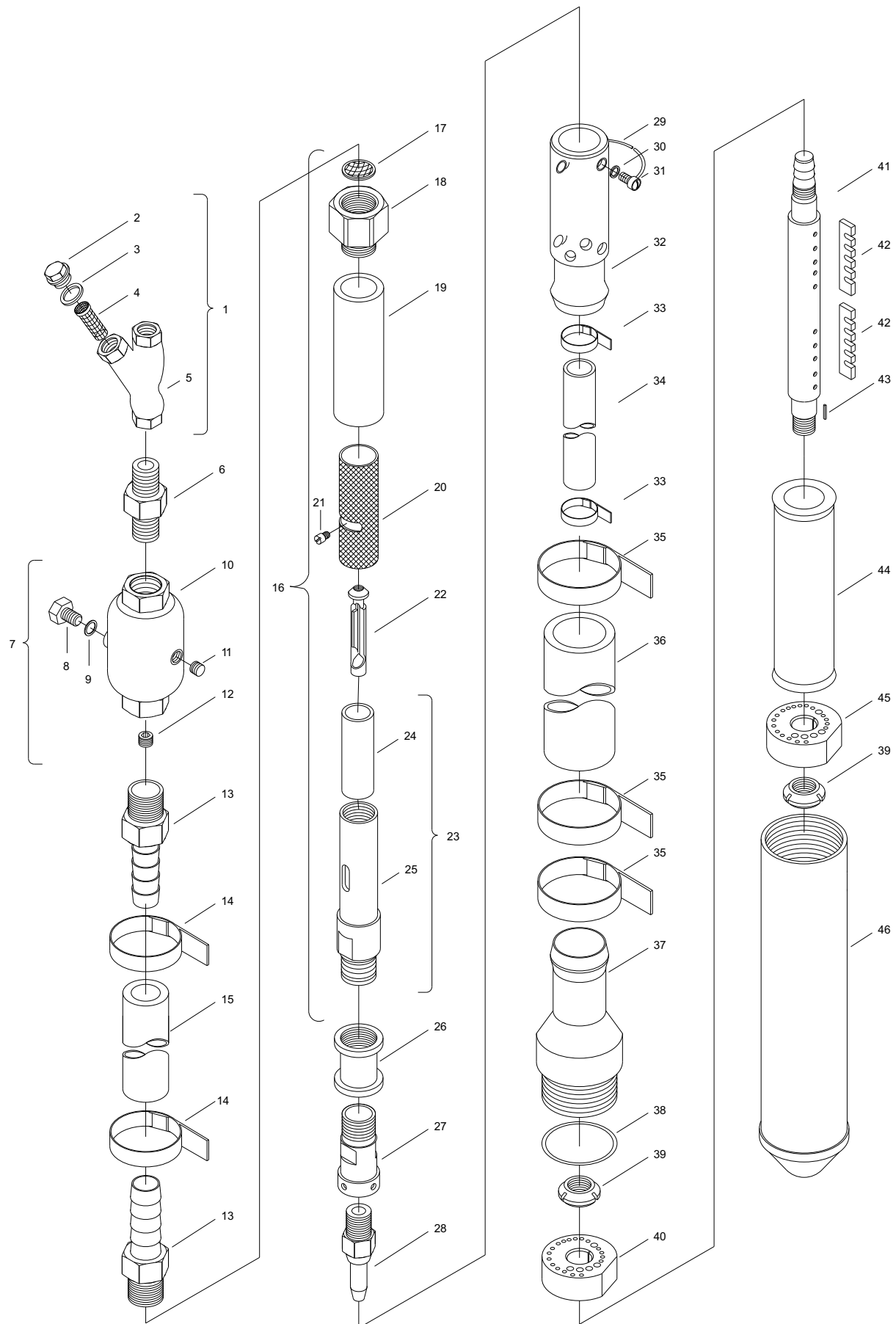
Welcome! Protect your investment in the world's finest air tools. Use genuine CP replacement parts.

The purchase of replacement parts for your CP tools deserves the same good judgment that resulted in the buying of the tools themselves. Each genuine CP part is made from carefully selected and inspected material, subjected to sophisticated machinery and finishing processes and heat-treated to produce just the right combination of hardness, ductility and impact resistance for its intended use. All parts are manufactured concurrently with those used in production tools, and are identical to them. The use of parts other than genuine CP replacement parts can lead to substandard performance, early failure, possible damage of other parts and, in some instances, unsafe conditions.

To reduce the risk of injury, read and understand the Operating Instructions manual and the percussion tool safety instructions before operating the tool.

CP 2190 is a pneumatic tool designed to vibrate and compact low slump concrete in columns, footings, slabs and walls.

EXPLODED VIEW OF CP 2190



Ref. No.	Ordering No.	Qty.	Description
1	C061460	1	Strainer - Live air complete (Includes item Nos. 2, 3, 4 & 5)
2		1	Plug - Gland
3		1	Gasket
4	C061340	1	Screen - Air strainer
5		1	Strainer - Live air
6	F016602	1	Nipple
7	C015137	1	Oiler (Includes item No. 8, 9, 10, 11 & 12)
8	C015155	1	Plug - Oiler body
9	C015156	1	Washer - Plug
10		1	Oiler
11	C077941	1	Plug - Pipe (3/8")
12	C068799	1	Plug - Pipe (1/4")
13	C073940	2	Nipple - Hose
14	C090674	2	Clamp - Hose
15	C060332	1	Hose - Intake (3/4")
16	C060364	1	Throttle complete (Includes item No. 17, 18, 19, 20, 21, 22, 24 & 25)
17	C037292	1	Strainer - Air
18	C037293	1	Cap - Handle
19	S061798	1	Cover - Throttle handle
20	C014054	1	Sleeve - Handle
21	C014055	1	Screw - Handle
22	C010046	1	Plug - Handle
23	C014050	1	Stem - Live air handle complete (Includes item Nos. 24 & 25)
24	C014052	1	Bushing
25		1	Stem - Live air handle
26	C015026	1	Coupling - Pipe (3/4")
27	C038683	1	Nipple - Swivel
28	P002079	1	Nipple - Hose
29	C039438	1	Wire - Lock
30	C012058	4	Lock washer (1/4")
31	C062118	4	Screw (#14 - 24 x 5/16")
32	C039584	1	Collar - Exhaust swivel
33	C090672	2	Clamp - Hose
34	C069153	1	Hose - Live air (10Ft.)
35	C090677	3	Clamp - Hose
36	C069151	1	Hose - Exhaust
37	C105367	1	Cap - End
38	R110210	1	O-ring
39	R041208	2	Nut - Bearing lock
40	C105372	1	Plate - Upper end
41	C105369	1	Shaft - Eccentric
42	C105373	2	Blade
43	US025392	1	Key
44	C105370	1	Weight - Eccentric
45	C105371	1	Plate - Lower end
46	C105363	1	Shell & Cap



2005-09
No. 9800 0541 01

© Copyright
Stockholm, Sweden

