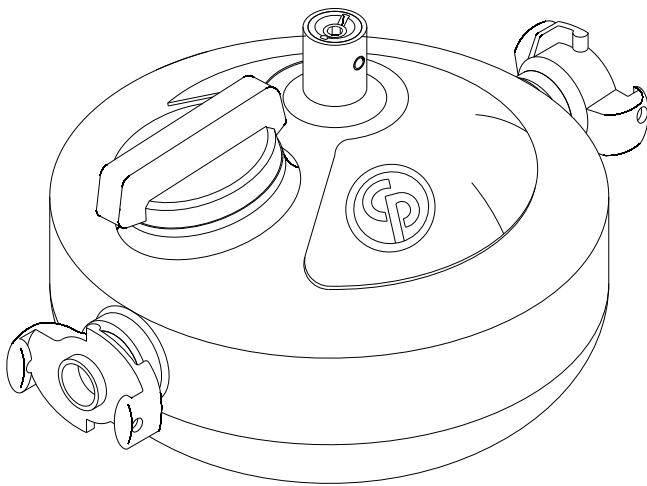


Spare Parts List

Lubricator 43
Lubricator 1300



www.cp.com

 **Chicago
Pneumatic**

2005-09
No. 9800 0409 90
© Copyright
Stockholm, Sweden

Contents

Pages

General information.....	4
Exploded views and table	6-7

GENERAL INFORMATION

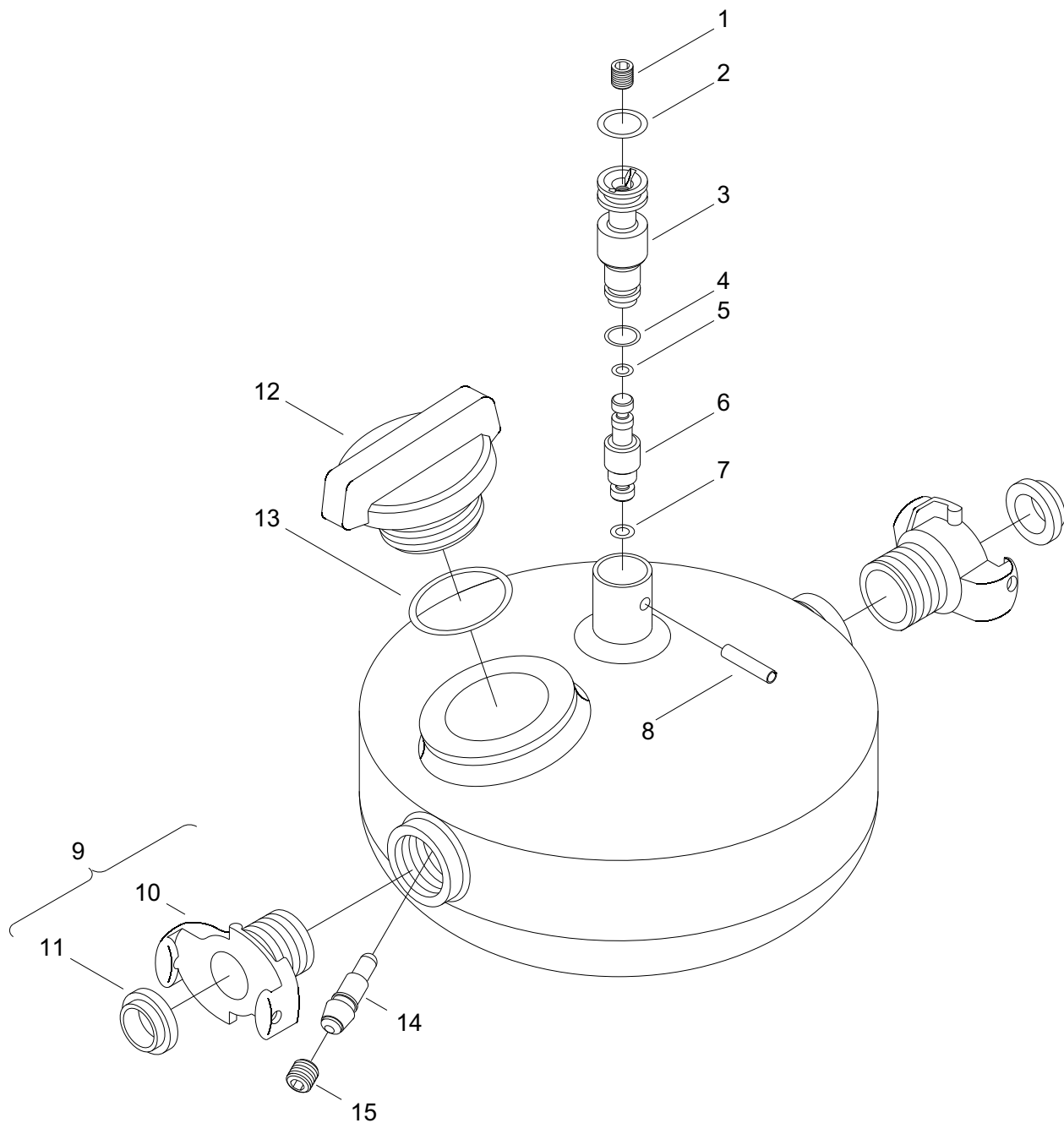
Welcome! Protect your investment in the world's finest air tools. Use genuine CP replacement parts.

The purchase of replacement parts for your CP tools deserves the same good judgment that resulted in the buying of the tools themselves. Each genuine CP part is made from carefully selected and inspected material, subjected to sophisticated machinery and finishing processes and heat-treated to produce just the right combination of hardness, ductility and impact resistance for its intended use. All parts are manufactured concurrently with those used in production tools, and are identical to them. The use of parts other than genuine CP replacement parts can lead to substandard performance, early failure, possible damage of other parts and, in some instances, unsafe conditions.

To reduce the risk of injury, read and understand the Operating Instructions manual and the percussion tool safety instructions before operating the tool.

Lubricator 43 and Lubricator 1300 are accessories to be used with pneumatic tools externally for adequately lubricating the internal parts.

Exploded view of Lubricator 43, Lubricator 1300



Ref. No.	Ordering No.	Qty. Lubricator 43	Qty. Lubricator 1300	Description
1	0192 1168 00	1	1	Set screw M4x6
2	0663 2116 00	1	1	O-ring dia. 9.3x2.4
3	9001 0003 36	1	1	Adjusting screw
4	0663 6114 00	1	1	O-ring dia. 7.1x1.6
5	0663 6110 00	1	1	O-ring dia. 3.1x1.6
6	9001 0003 53	1	1	Valve cone
7	0663 2110 00	1	1	O-ring dia. 3.3x2.4
8	0108 1193 00	1	1	Spring pin dia. 3x14
9	9000 0303 00	-	2	Claw coupling, complete G1A (Includes item No. 10 & 11)
	9001 0005 18	2	-	Claw coupling, complete G1A US Version (Includes item No. 10 & 11)
10		1	1	Claw coupling
11	9000 0000 00	-	1	Gasket
	9001 0005 15	1	-	Gasket
12	9090 0371 00	1	1	Plug
13	0663 2128 00	1	1	O-ring dia. 26.2x3
14	9001 0003 43	1	1	Check valve
15	3115 1746 02	1	1	Nozzle



2005-09
No. 9800 0409 90

© Copyright
Stockholm, Sweden

