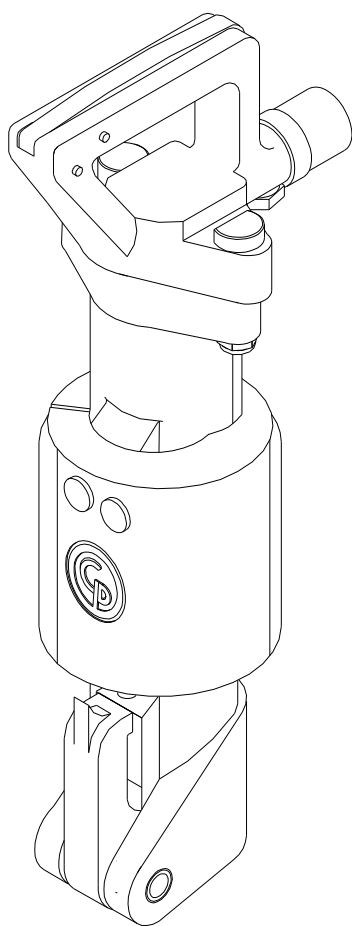


Spare Parts List

CP 0222

Hammers/Clay Diggers/Picks



www.cp.com

 **Chicago
Pneumatic**

2005-08
No. 9800 0520 01
© Copyright
Stockholm, Sweden

Contents

Pages

General information.....	4
Useful Information	5
Exploded views and tables	6-9

GENERAL INFORMATION

Welcome! Protect your investment in the world's finest air tools. Use genuine CP replacement parts.

The purchase of replacement parts for your CP tools deserves the same good judgment that resulted in the buying of the tools themselves. Each genuine CP part is made from carefully selected and inspected material, subjected to sophisticated machinery and finishing processes and heat-treated to produce just the right combination of hardness, ductility and impact resistance for its intended use. All parts are manufactured concurrently with those used in production tools, and are identical to them. The use of parts other than genuine CP replacement parts can lead to substandard performance, early failure, possible damage of other parts and, in some instances, unsafe conditions.

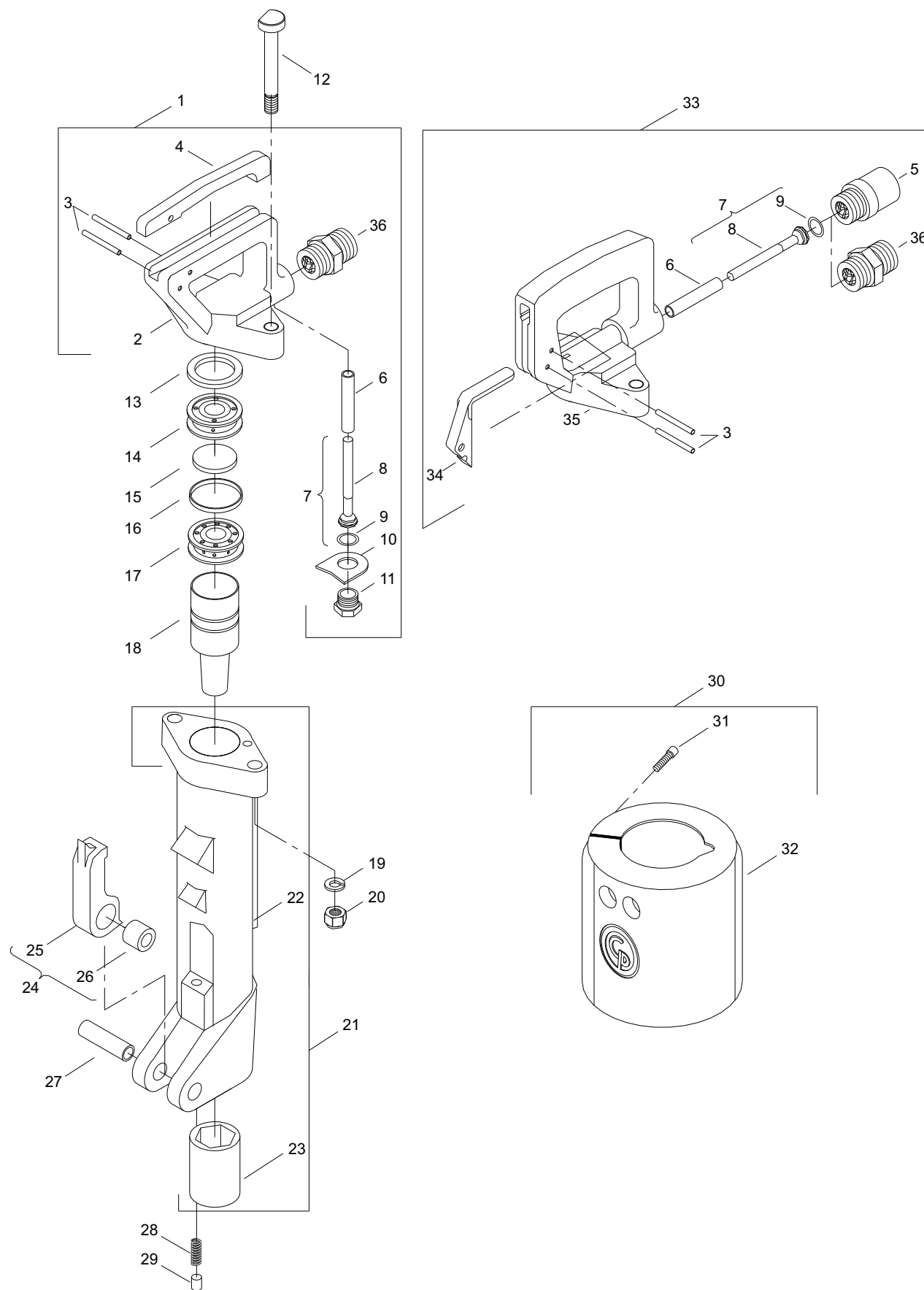
To reduce the risk of injury, read and understand the Operating Instructions manual and the percussion tool safety instructions before operating the tool.

CP 0222 is a pneumatic tool designed for trenching, tunneling, lateral, and overhead work and light demolition in construction applications.

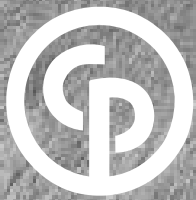
Useful information

Part no.	Tool model	Trigger	Air inlet bushing thread	Muffler present
T022181	CP0222 CHIT	Inside trigger	NPT	no
T022325	CP0222 CHIT BS	Inside trigger	BSP	yes
T022323	CP0222 CHOT BS	Outside trigger	BSP	yes

EXPLODED VIEW OF CP 0222



Ref. No.	Ordering No.	Qty.	Description
CP 0222			
1	F815271	1	Outside trigger handle complete (Includes item No. 2, 3, 4, 6, 8, 9, 10, 11 & 36)
2		1	Handle - Outside trigger
3	R133757	2	Pin - Throttle lever
4	F815161	1	Lever - Outside trigger
5	F814130	1	Nipple - Air inlet NPT
6	F813910	1	Bush
7	F814812	1	Valve - Throttle (Includes item No. 8 & 9)
8		1	Valve - Throttle
9	P083071	1	O-ring
10	F814582	1	Washer - Tab
11	P814440	1	Plug - Throttle valve (Outside trigger)
12	F813911	2	Bolt - Handle
13	F813908	1	Pad - Valve case preload
14	F814774	1	Lid - Upper valve case
15	F012659	1	Valve
16	F814776	1	Case - Valve
17	F814775	1	Lid - Lower valve case
18	F815015	1	Piston
19	R000550	2	Lock washer (5/8 ")
20	P081091	2	Nut - Self locking (5/8 - 18)
21	F815268	1	Cylinder assembly (Includes item No. 22 & 23)
22		1	Cylinder
23	F813919	1	Sleeve - Tool
24	F815269	1	Retainer - Latch (Includes Item No. 25 & 26)
25		1	Retainer - Latch
26	F815174	1	Bushing - Latch
27	R133758	2	Pin - Latch Retainer (1/2 " Dia. X 2 1/2 ")
28	R086982	1	Spring-Retainer latch plunger
29	F813308	1	Plunger - Latch
30	R141765	1	Muffler (optional) (Includes item No. 31 & 32)
31	P072446	4	Screw - Hex socket (1/4 - 28 x 5/8)
32		1	Muffler
33	F815852	1	Inside - Trigger handle complete (Includes item No. 3, 5, 6, 8, 9, 34, 35)
34	F815167	1	Lever - Inside trigger
35	F815276	1	Handle - Inside trigger
36	F035769	1	Nipple - Air inlet (BSP)



2005-08
No. 9800 0520 01
© Copyright
Stockholm, Sweden

