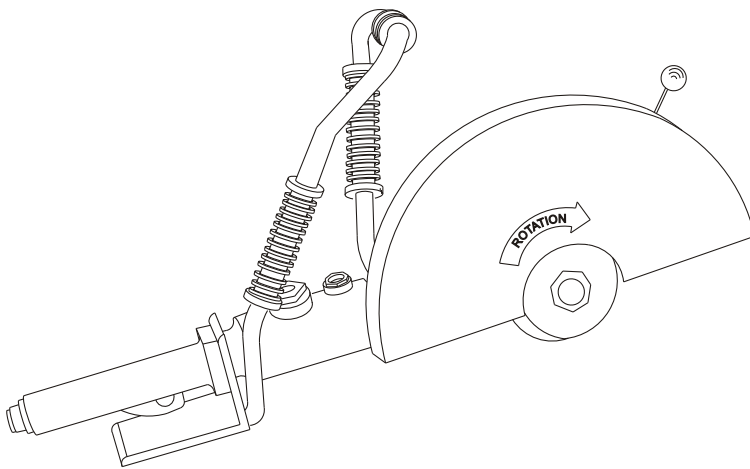




# **Spare Parts List**

## **CP 0044 Concrete Saw**



[www.cp.com](http://www.cp.com)

 **Chicago  
Pneumatic**

**2005-10**  
**No. 9800 0511 01**

© Copyright  
Stockholm, Sweden

## Contents

### Pages

General information..... 4

Exploded views and tables ..... 6-11

## GENERAL INFORMATION

Welcome! Protect your investment in the world's finest air tools. Use genuine CP replacement parts.

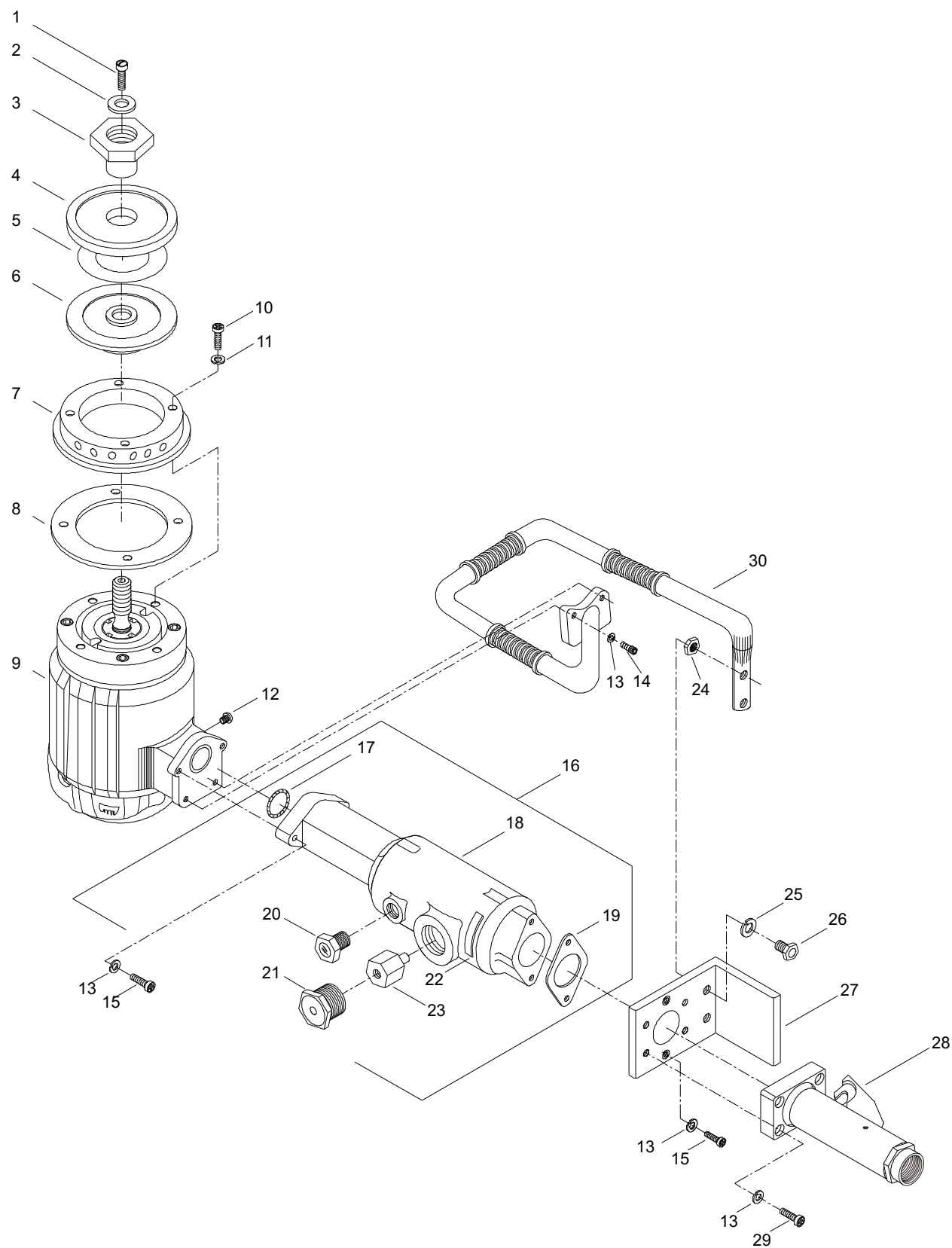
The purchase of replacement parts for your CP tools deserves the same good judgment that resulted in the buying of the tools themselves. Each genuine CP part is made from carefully selected and inspected material, subjected to sophisticated machinery and finishing processes and heat-treated to produce just the right combination of hardness, ductility and impact resistance for its intended use. All parts are manufactured concurrently with those used in production tools, and are identical to them. The use of parts other than genuine CP replacement parts can lead to substandard performance, early failure, possible damage of other parts and, in some instances, unsafe conditions.

To reduce the risk of injury, read and understand the Operating Instructions manual and the percussion tool safety instructions before operating the tool.

CP 0044 is a pneumatic concrete saw designed for cutting brick, block, masonry, asphalt and concrete. The saw can be used for cutting at any angle.

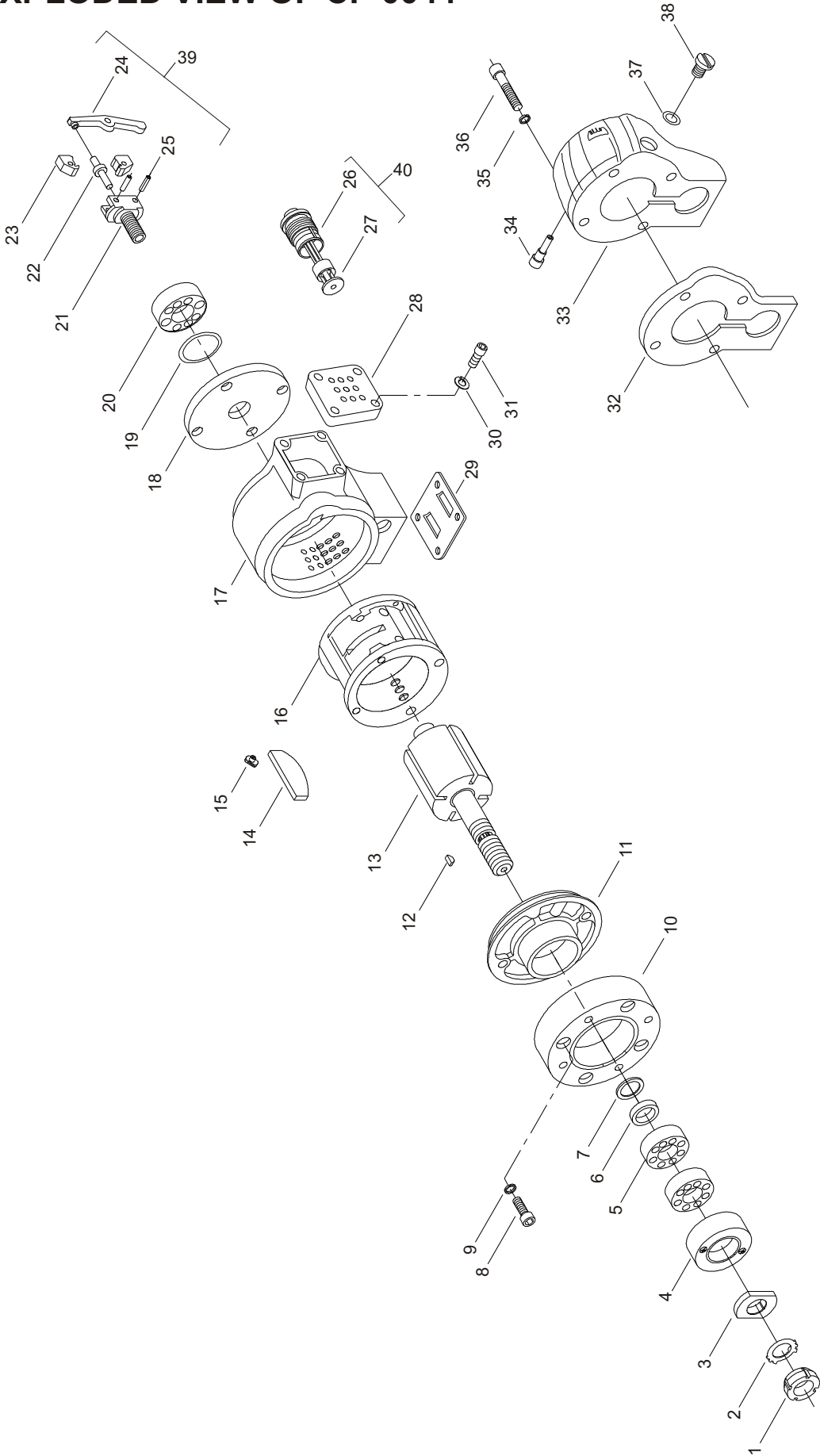


# EXPLODED VIEW OF CP 0044



Ref. No.	Ordering No.	Qty.	Description
CP 0044 Concrete Saw			
1	N430126	1	Screw - Pan head (M6 X 1)
2	N430125	1	Washer - Flat
3	N430124	1	Nut - Locking
4	N430123	1	Wheel collar (Outer)
5	N430122		Decal - Warning
6	C6635561	1	Wheel collar (Inner)
7	N430113	1	Ring - Mounting
8	N430130	1	Ring - Retaining (Inner)
9	T039015	1	Motor (CP 4HP Concrete Saw Motor)
10	C127944	4	Screw - Socket head cap
11	C127505	4	Washer - Lock (6mm)
12	C086065	4	Screw - Drive
13	C012058	10	Washer - Lock
14	Q2678000	2	Screw - Hex socket head (1/4-20 X 5/8)
15	S062753	4	Screw
16	Z9603561	1	Oiler complete (Includes item No 17, 18, 19, 20, 21, 22 & 23)
17	C084172	1	O-ring
18		1	Oiler
19	N430101	1	Gasket
20	N430106	1	Sight glass
21	N430104	1	Valve - Manual safety
22	N430109	1	Decal - Check oil daily
23	N430105	1	Feeder
24	C018515	2	Nut - Hex (1/4-20)
25	S000271	2	Washer - Lock
26	S009438	2	Hex - Cap screw
27	N430100	1	Guard throttle
28	C133535	1	Handle - Throttle complete
29	P072446	4	Screw - Cap
30	N430107	1	Handle

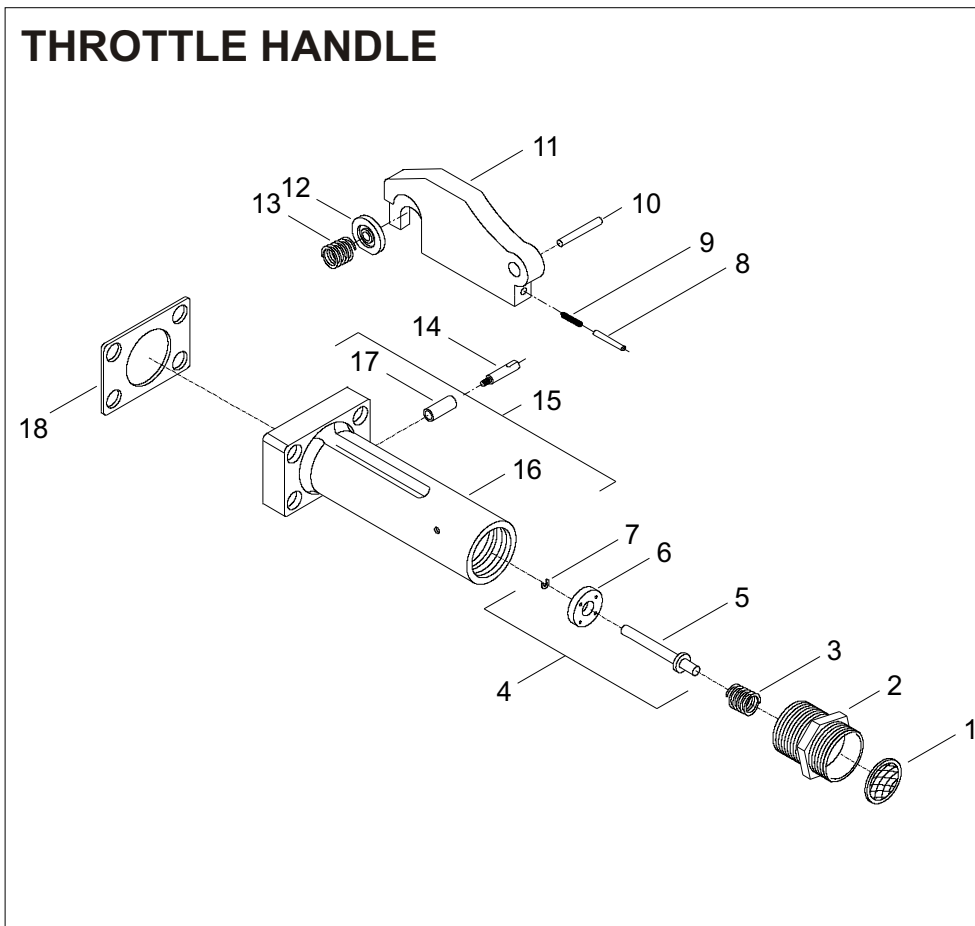
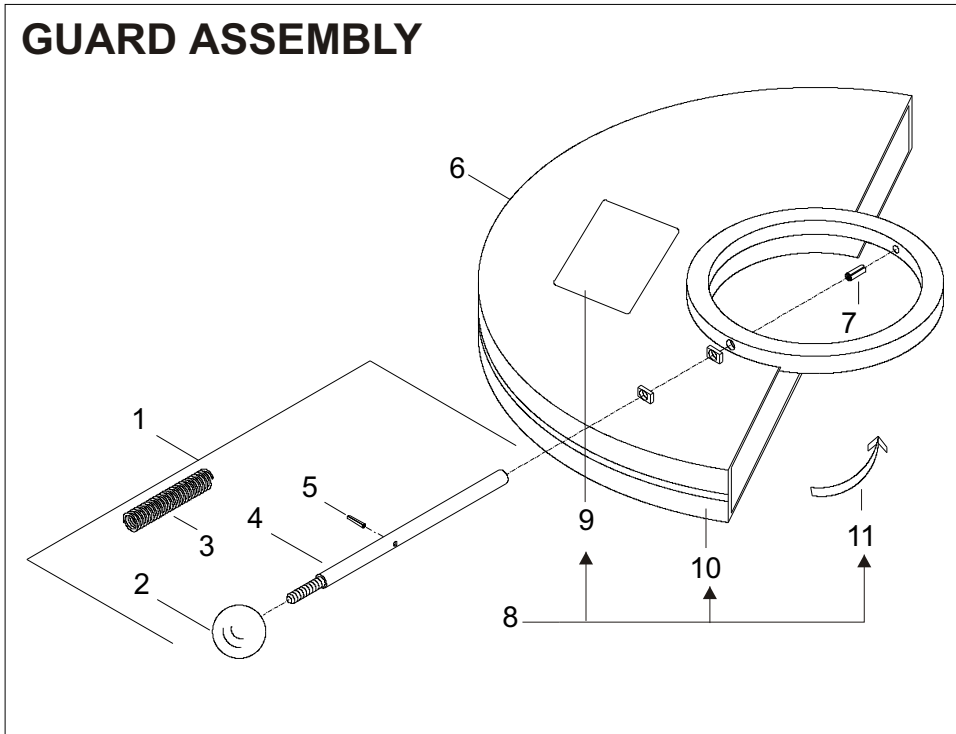
EXPLODED VIEW OF CP 0044





Ref. No.	Ordering No.	Qty.	Description
4 HP Motor (Consists of items 1 to 38)			
1	Q4105400	1	Lock nut
2	N430002	1	Lock washer
3	N430003	1	Spacer
4	N430004	1	Spindle bearing lock nut
5	N430005	2	Ball bearing
6	N430007	1	Spacer
7	N430042	*	Shim (As needed)
8	N430008	4	Cap screw
9	N430016	4	Spring washer
10		1	Spacer ring
11	N430010	1	Lower end plate
12	N430011	1	Spindle key
13	N430012	1	Rotor
14	N430013	4	Rotor blade
15	N430014	1	Cylinder liner dowel
16	N430037	1	Cylinder liner
17		1	Cylinder housing
18	N430015	1	Upper end plate
19	N430018	1	Tension washer
20	N430019	1	Ball bearing
21		1	Governor body
22		1	Governor push pin
23		2	Governor weight
24		1	Governor lever
25		2	Governor weight pin
26		1	Governor valve cage
27		1	Governor valve
28	N430041	1	Exhaust deflector
29	N430033	1	Gasket
30	C012058	4	Lock washer
31	N430035	4	Screw
32	N430028	1	Governor housing gasket
33		1	Governor housing
34	N430032	1	Governor lever pin
35	N430016	4	Spring washer
36	N430017	4	Cap screw
37	N430030	1	Gasket for oil filter plug
38	N430031	1	Oil filter plug
	C068064	1	Plug
39	Z9164561	1	Governor complete (Includes item No. 21, 22,23,24 & 25)
40	Z9165561	1	Governor valve complete (Includes item No. 26 & 27)

## EXPLODED VIEW OF CP 0044



Ref. No.	Ordering No.	Qty.	Description
	Z8288561	1	Guard assembly (Includes item Nos.1, 6, 7 & 8)
1	Z3626561	1	Locking rod complete (includes item No. 2, 3, 4 & 5)
2		1	Knob
3		1	Spring
4		1	Rod - Locking
5		1	Pin - Roll
6		1	Guard
7		1	Pin - Roll
8	Z7208561	1	Decal set complete (Includes item No. 9,10 & 11)
9		1	Decal - Danger
10		1	Decal - Rotation
11		1	Decal - Strip

**THROTTLE HANDLE (Consists of item No. 1 to 18)**

1	C120618	1	Strainer - Air
2	C092292	1	Bushing - Air Inlet (1/2")
3	C120619	1	Spring - Throttle valve
4	Z9549561	1	Throttle - Valve complete (Includes item No. 5, 6 & 7)
5		1	Valve - Throttle
6		1	Seal - Throttle valve
7		1	Ring - Retaining
8	S014764	1	Pin - Rolled (1/8" diameter x 11/16" )
9	C132695	1	Spring - Roll pin
10	P072359	1	Pin - Throttle lever
11	C132694	1	Lever - Throttle
12	C133902	1	Stop - Throttle lever
13	C133903	1	Spring - Compression
14	C133904	1	Button - Lock
15	C133419		Handle - Throttle complete (Includes item No.16 & 17)
16		1	Handle - Throttle
17	C133905	1	Bushing - Lock bushing
18	C090940	1	Gasket - Handle



**2005-10**  
**No. 9800 0511 01**

© Copyright  
Stockholm, Sweden

