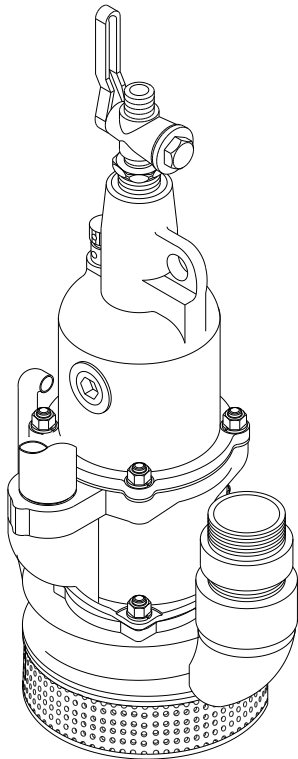




# **Spare Parts List**

## **CP 0020 Pump**



**[www.cp.com](http://www.cp.com)**

 **Chicago  
Pneumatic**

**2005-09**  
**No. 9800 0526 01**

© Copyright  
Stockholm, Sweden

**Contents****Pages**

General information.....	4
Exploded views and tables .....	6-7

## GENERAL INFORMATION

Welcome! Protect your investment in the world's finest air tools. Use genuine CP replacement parts.

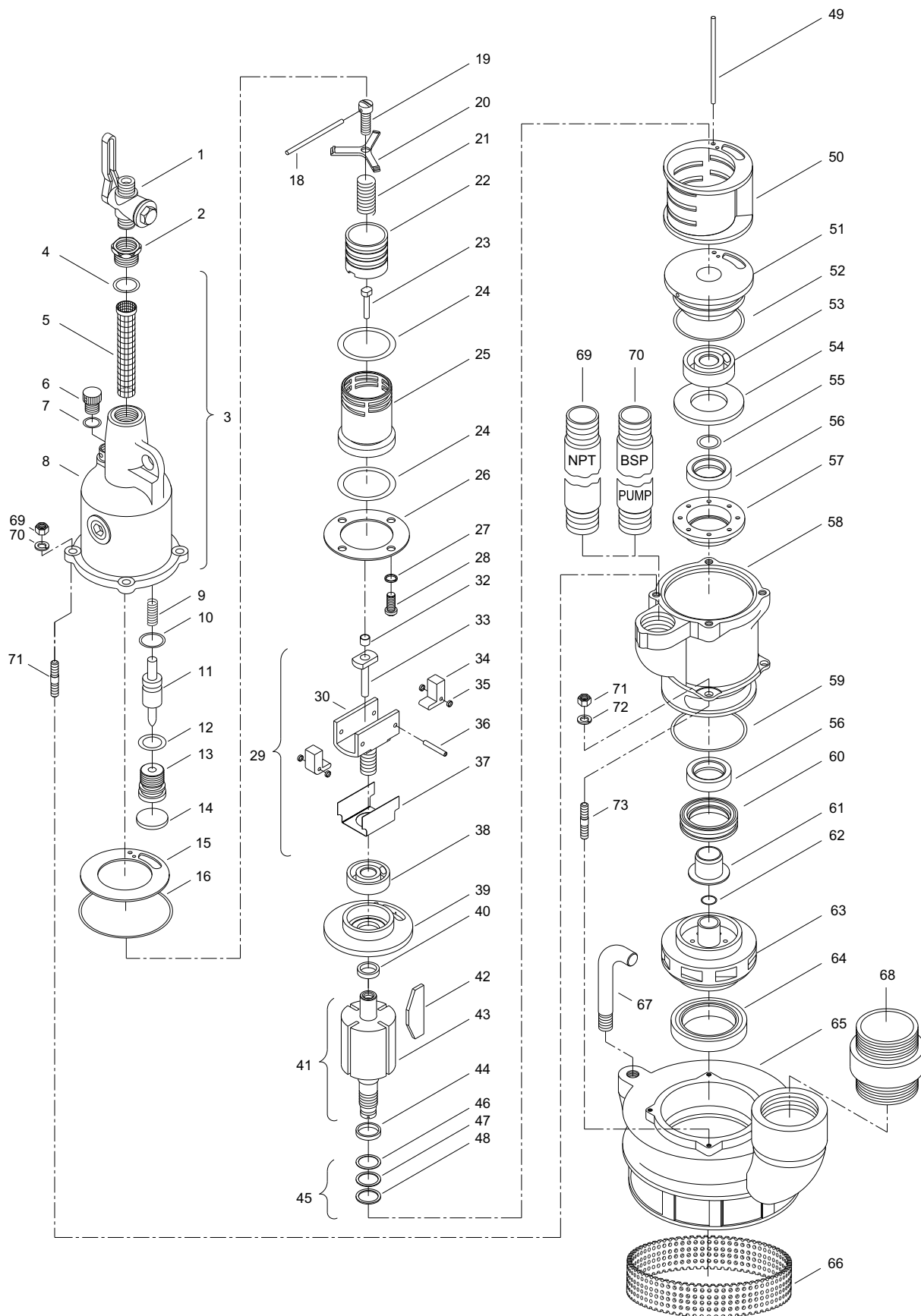
The purchase of replacement parts for your CP tools deserves the same good judgment that resulted in the buying of the tools themselves. Each genuine CP part is made from carefully selected and inspected material, subjected to sophisticated machinery and finishing processes and heat-treated to produce just the right combination of hardness, ductility and impact resistance for its intended use. All parts are manufactured concurrently with those used in production tools, and are identical to them. The use of parts other than genuine CP replacement parts can lead to substandard performance, early failure, possible damage of other parts and, in some instances, unsafe conditions.

To reduce the risk of injury, read and understand the Operating Instructions manual and the percussion tool safety instructions before operating the tool.

CP 0020 is a pneumatic sump pump designed to remove water from trenches, ditches, manholes, industrial sumps and excavations.



## EXPLODED VIEW OF CP 0020



Ref. No.	Ordering No.	Qty.	Description
1	R137313	1	Valve (3/4" male)
2	R137314	1	Bushing - Air inlet
3	C086466	1	Governor housing complete (Includes item No.4, 5, 6, 7 & 8)
4	C084172	1	O-ring
5	C085374	1	Strainer - Air
6	C086130	1	Plug - Oil
7	P083082	1	O-ring
8	C085366	1	Housing - Governor
9	S017510	1	Spring
10	C079489	1	O-ring
11	C085378	1	Valve - Oiler
12	P083071	1	O-ring
13	C085379	1	Seat - Oiler valve
14	C085380	1	Plug - Oiler
15	C085363	1	Gasket - Governor housing
16	C085386	1	O-ring
18	C056975	1	Lock wire
19	C056974	1	Screw
20	C089835	1	Retainer - Governor spring
21	C085372	1	Spring - Governor
22	C085370	1	Valve - Governor
23	C085371	1	Pin - Governor valve
24	C085385	2	O-ring
25	C085368	1	Cage - Governor
26	C085369	1	Disc - Gage tension
27	S008020	4	Lock washer
28	S007685	4	Screw
29	C086467	1	Governor body complete (Includes item No. 30, 32, 33, 34, 35, 36 & 37)
30		1	Body governor
32		1	Nylon insert
33		1	Pin - Governor push
34		2	Weight - Governor
35		4	Spacer - Governor weight
36		2	Pin - Governor weight
37		1	Retainer - Pin
38	C013654	1	Bearing - Ball
39	*C085360	1	Plate - Upper end
40	C085358	1	Spacer - Rotor bearing (Upper)
41	Z8777463	1	Rotor complete (Includes item No. 42 & 43)
42	C085362	4	Blade - Rotor
43		1	Rotor
44	C085357	1	Spacer - Rotor bearing (Lower)
45	Z8778463	1	Shim complete (Includes item No.46, 47 & 48)
46		2	Shim (0.001")
47		2	Shim (0.002")
48		2	Shim (0.003")
49	C085355	1	Pin - Dowel
50	*C085361	1	Liner
51	*C085356	1	Plate - Lower end
52	C086699	1	O-ring
53	C085382	1	Bearing - Ball
54	C088457	1	Gasket - Seal plate
55	C084173	1	O-ring
56	C088616	2	Seal - Oil
57	C088456	1	Plate - Seal
58	C085348	1	Housing - Motor
59	H083084	1	O-ring
60	C088458	1	Plate - Upper wear
61	C088455	1	Sleeve - Impeller
62	C084400	1	O-ring
63	C088758	1	Impeller
64	C088459	1	Plate - Lower wear
65		1	Housing - Impeller
66	C085342	1	Screen
67	C085347	1	Handle
68	R137581	1	Nipple (2 1/2" BSP)
69	C086080	1	Pipe - Exhaust (NPT)
70	R137580	1	Pipe - Exhaust (BSP)
71	C085384	8	Nut - Brass (3/8"-16)
72	C035166	8	Lock washer (3/8")
73	C061078	8	Stud (3/8" - 16 x 3/8")
74	C048412	1	Shims (May be required if parts shown * are replaced)



**2005-09**  
**No. 9800 0526 01**

© Copyright  
Stockholm, Sweden

