



Spare Parts List

CP 0016 Chipping Hammer



www.cp.com

 **Chicago
Pneumatic**

2004-10
No. 9800 0513 01

© Copyright
STOCKHOLM • SWEDEN

Contents

Pages

General information.....	4
Exploded views and table	6,7

GENERAL INFORMATION

Welcome! Protect your investment in the world's finest air tools. Use genuine CP replacement parts.

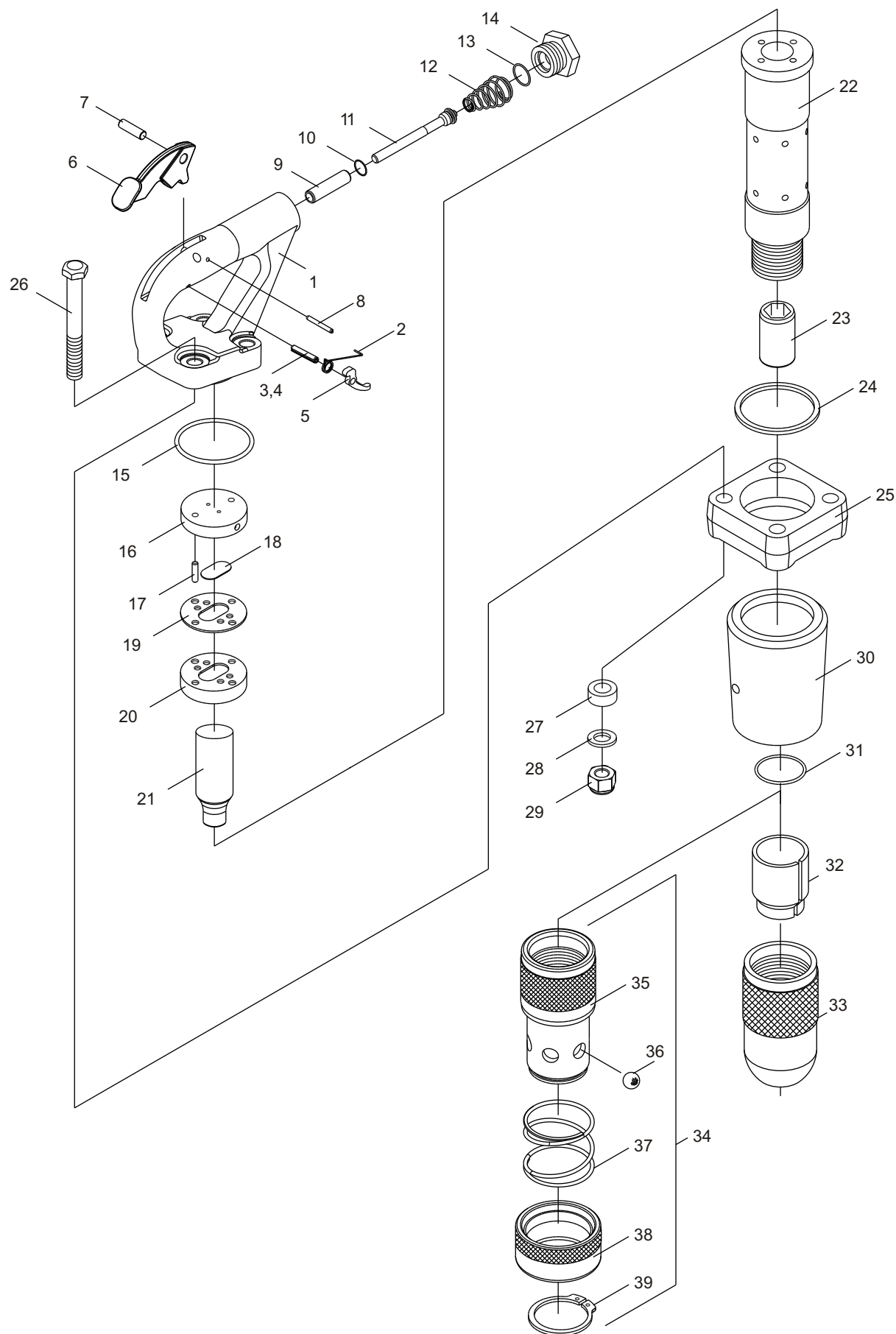
The purchase of replacement parts for your CP tools deserves the same good judgment that resulted in the purchase of the tools themselves. Each genuine CP part is made from carefully selected and inspected material, subjected to sophisticated machinery and finishing processes and heat-treated to produce just the right combination of hardness, ductility and impact resistance for its intended use. Each part is identical to, and made concurrently with, parts used in production tools. The use of parts other than genuine CP replacement parts can lead to substandard performance, early failure, possible damage of other parts and, in some instances, unsafe conditions.

CP 0016 is a machine designed for light demolition and plant work. The machine can be used both horizontally and vertically.

To reduce the risk of injury, read and understand the Operating Instructions manual and the percussion tool safety instructions before operating the tool.

Install the chipping hammer as per directions given in the Operating Instructions.

EXPLODED VIEW AND TABLES



Ref. No.	Part No.	Qty.	Description
CP 0016 Chipping Hammer			(consists of 1 to 33) (from serial number 04190U156N onwards)
1	Z8342857	1	Handle (includes index number 9)
2	R157956	1	Lock-off spring
3	R158137	1	Pin-Lock-off trigger (5/32")
4	R158138	1	Pin-Lock-off trigger (3/32")
5	R157955	1	Lock-off trigger
6	R157990	1	Lever
7	A043627	1	Pin - Lever
8	G071660	1	Pin - Stop (1/8")
9	-	1	Bush-Throttle valve
10	R138140	1	"O" - Ring (Throttle valve)
11	R157957	1	Throttle valve (includes index number 10)
12	R157960	1	Spring-Throttle valve
13	C046471	1	"O" - Ring (Air Inlet Bushing)
14	F826645	1	Air Inlet Bushing
15	C116352	1	"O" - Ring
16	P071350	1	Lid - Upper valve case
17	A041797	2	Pin - Dowel
18	P071358	1	Valve
19	P071352	1	Case - Valve
20	P071351	1	Lid - Lower valve case
21	P157919	1	Piston - 3" Stepped Ø
22	-	1	Cylinder
23	P157918	1	Bushing -19 x 50 hex
24	R157952	1	Ring - Clamp
25	R157951	1	Flange - Cylinder
26	R157954	4	Bolt
27	P155421	4	Bumper
28	R158143	4	Washer
29	R157953	4	Nyloc Nut
30	P155535	1	Muffler
31	H2228858	1	Retainer Lock Ring (Dia. 39.2 x 3mm)
32	H2303858	1	Buffer
33	C8788859	1	Retainer
34	Z8389857	1	Retainer Assembly (Optional) (includes index numbers 35,36,37,38 and 39)
35	---	1	Retainer
36	Z8754857	1	Steel Ball (1 set consists of 6 numbers)
37	H3437857	1	Spring
38	---	1	Retainer Sleeve
39	H3275857	1	External Circlip



2004-10
No. 9800 0513 01
© Copyright
Stockholm, Sweden

