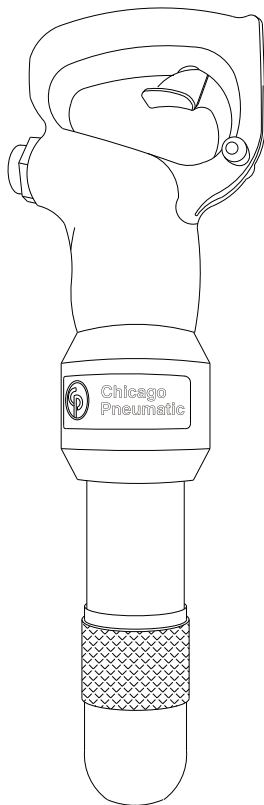




Spare Parts List

CP 0012 Chipping Hammer



www.cp.com



2005-01
No. 9800 0516 01

© Copyright
STOCKHOLM • SWEDEN

Contents

Pages

| | |
|---------------------------------|------|
| General information..... | 4 |
| Exploded views and tables | 6, 7 |

GENERAL INFORMATION

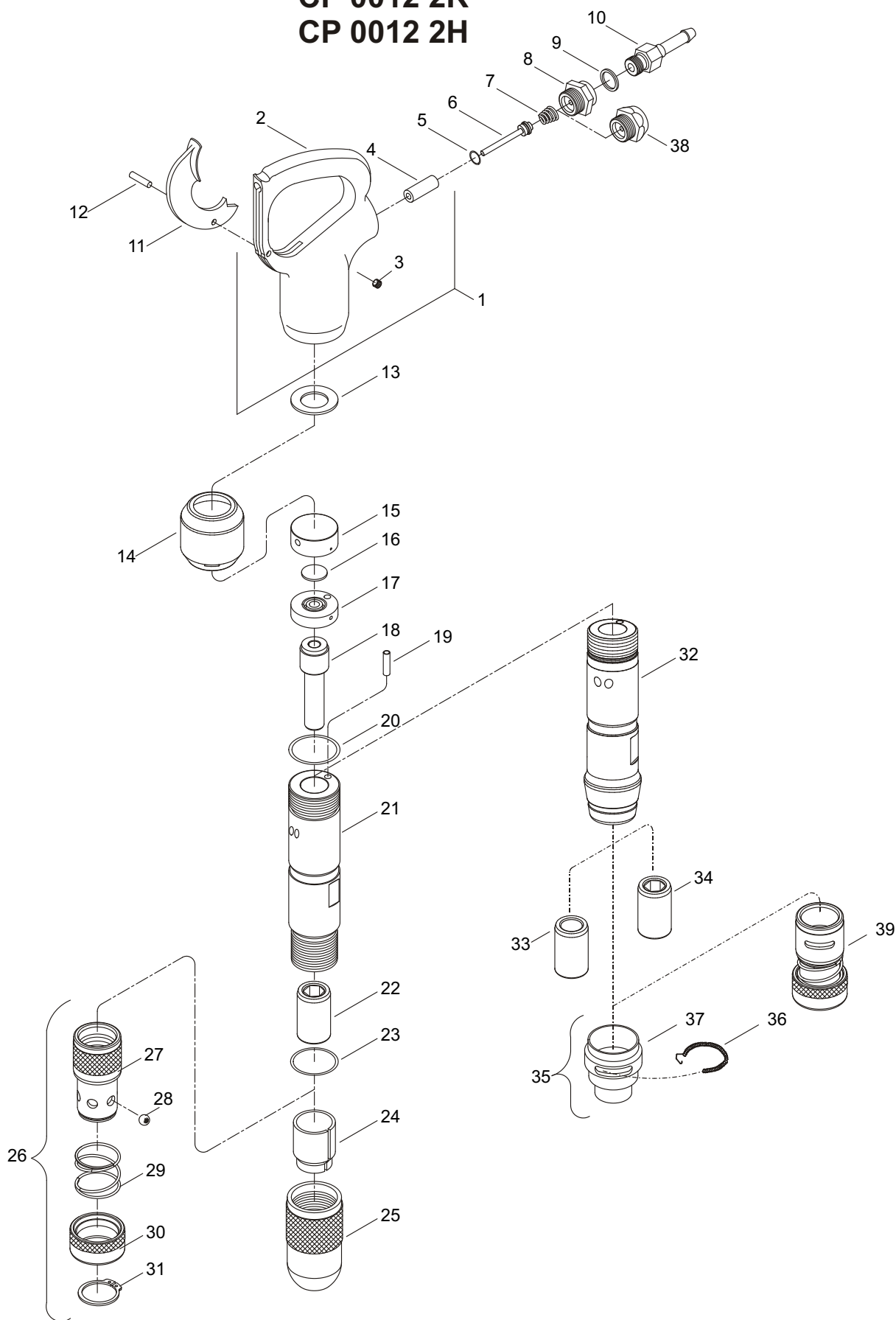
Welcome! Protect your investment in the world's finest air tools. Use genuine CP replacement parts.

The purchase of replacement parts for your CP tools deserves the same good judgment that resulted in the buying of the tools themselves. Each genuine CP part is made from carefully selected and inspected material, subjected to sophisticated machinery and finishing processes and heat-treated to produce just the right combination of hardness, ductility and impact resistance for its intended use. All parts are manufactured concurrently with those used in production tools, and are identical to them. The use of parts other than genuine CP replacement parts can lead to substandard performance, early failure, possible damage of other parts and, in some instances, unsafe conditions.

To reduce the risk of injury, read and understand the Operating Instructions manual and the percussion tool safety instructions before operating the tool.

CP 0012 is a pneumatic tool designed for rugged use in foundries, fabrication shops and construction applications for light to medium chipping and trimming.

EXPLODED VIEW OF CP 0012 H19 CP 0012 2R CP 0012 2H



| Ref. No. | Ordering No. | Qty. | Description |
|-------------------------|--------------|------|---|
| CP 0012 Chipping Hammer | | | |
| 1 | Z8360858 | 1 | Handle complete (Includes item No. 2, 3 & 4) |
| 2 | | 1 | Handle |
| 3 | C102507 | 1 | Plug - 1/16 x 27 NPTF |
| 4 | | 1 | Bushing - Throttle valve |
| 5 | Q0132858 | 1 | O-ring - Throttle valve |
| 6 | D3182858 | 1 | Throttle valve |
| 7 | R085596 | 1 | Spring - Throttle valve |
| 8 | F064697 | 1 | Air inlet bushing (BSP) |
| 9 | F064696 | 1 | Gasket - hose tail |
| 10 | F064695 | 1 | Hose tail (3/8" BSP) |
| 11 | F027853 | 1 | Lever - Throttle |
| 12 | A043627 | 1 | Pin - Throttle lever |
| 13 | Q4204858 | 2 | Washer 1.0 mm |
| 14 | H3740858 | 1 | Muffler |
| 15 | Z3803858 | 1 | Valve housing |
| 16 | D7368858 | 1 | Main valve |
| 17 | D5090858 | 1 | Lower valve lid |
| 18 | D1579858 | 1 | Piston |
| 19 | D7288858 | 1 | Pin - Dowel (Pipe) |
| 20 | H0359858 | 1 | O-ring (Cylinder) |
| 21 | | 1 | Cylinder |
| 22 | D8389858 | 1 | Guide bush (19 mm Hex. x 50) |
| 23 | H2228858 | 1 | Retainer lock ring (dia. 39.2 x 3 mm) |
| 24 | H2303858 | 1 | Buffer |
| 25 | C8788859 | 1 | Retainer |
| 26 | Z8389857 | 1 | Retainer complete (Ball type screw - on) (Optional) (Includes item No 27, 28, 29, 30, 31 & 32) |
| 27 | | 1 | Retainer |
| 28 | | 6 | Chuck retainer ball (Only available as set Z8754857 incl. 6 balls) |
| 29 | H3437857 | 1 | Spring |
| 30 | | 1 | Retainer sleeve |
| 31 | H3275857 | 1 | External circlip |
| 32 | | 1 | Cylinder (for spring type retainer) |
| 33 | P001550 | 1 | Bushing - Round |
| 34 | P001551 | 1 | Bushing - Hexagon |
| 35 | P107243 | 1 | Sleeve - Retainer (Includes item No. 36 & 37) |
| 36 | P070994 | 1 | Spring - Lock coil |
| 37 | | 1 | Sleeve - Retainer |
| 38 | R085893 | 1 | Air inlet bushing (NPTF) |
| 39 | | 1 | Ball type retainer, US-Standard (Optional) |



2005-01
No. 9800 0516 01
© Copyright
Stockholm, Sweden

