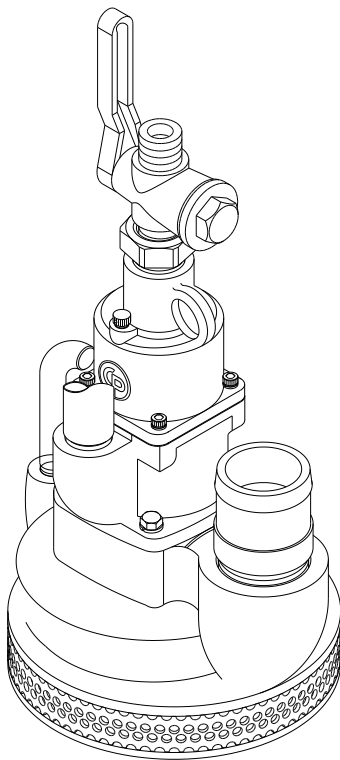




Spare Parts List

CP 0010 Pump



www.cp.com

 **Chicago
Pneumatic**

2005-09
No. 9800 0525 01

© Copyright
Stockholm, Sweden

Contents

Pages

General information.....	4
Exploded views and tables	6-7

GENERAL INFORMATION

Welcome! Protect your investment in the world's finest air tools. Use genuine CP replacement parts.

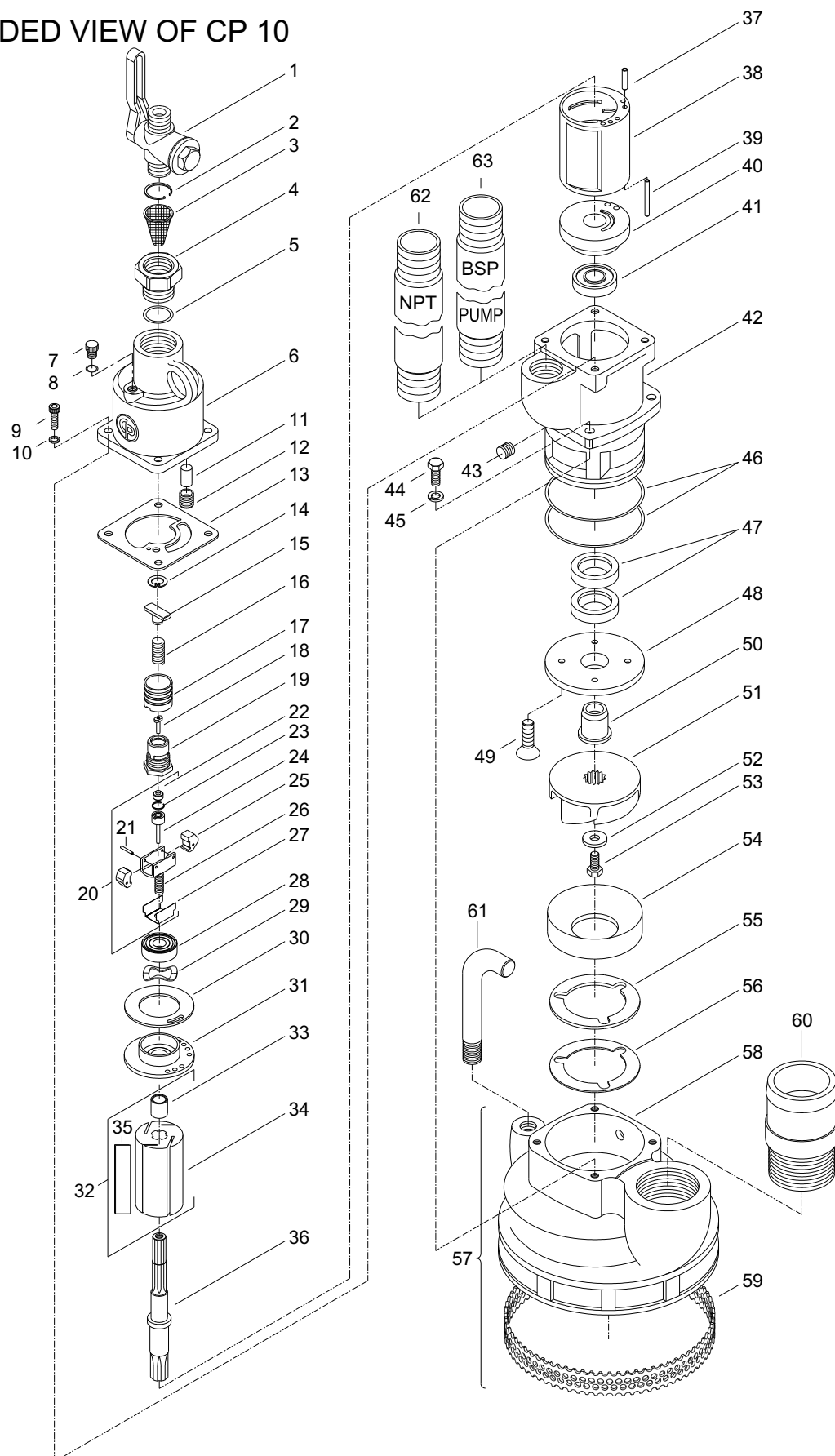
The purchase of replacement parts for your CP tools deserves the same good judgment that resulted in the buying of the tools themselves. Each genuine CP part is made from carefully selected and inspected material, subjected to sophisticated machinery and finishing processes and heat-treated to produce just the right combination of hardness, ductility and impact resistance for its intended use. All parts are manufactured concurrently with those used in production tools, and are identical to them. The use of parts other than genuine CP replacement parts can lead to substandard performance, early failure, possible damage of other parts and, in some instances, unsafe conditions.

To reduce the risk of injury, read and understand the Operating Instructions manual and the percussion tool safety instructions before operating the tool.

CP 0010 is a pneumatic sump pump designed to remove water from trenches, ditches, manholes, industrial sumps and excavations.

EXPLODED VIEW OF CP 0010

EXPLODED VIEW OF CP 10



Ref. No.	Ordering No.	Qty.	Description
1	R137313	1	Valve (3/4" male)
2	C090746	1	Ring - Retainer
3	C078057	1	Filter - Screen
4	C113782	1	Air inlet bushing
5	C046471	1	O-ring
6	C113799	1	Housing - Governor
7	C085233	1	Plug - Oil
8	A082777	1	O-ring
9	C064806	4	Screw - Cap (Allen) (1/4" - 20 x 3/4")
10	C012058	4	Lock washer (1/4")
11	C113787	1	Wick
12	C113789	1	Plug - Orifice
13	C113791	1	Gasket - Housing
14	S087190	1	Ring - Retainer
15	C113780	1	Retainer - Spring
16	C113779	1	Spring - Compression
17	C090935	1	Valve - Governor
18	C084364	1	Pin - Governor valve
19	C113798	1	Cage - Governor
20	Z8769462	1	Governor body complete (Includes item No.21, 22, 23, 24, 25, 26 & 27)
21		2	Pin - Governor weight
22		1	Button - Push pin
23		1	Ring - Retaining
24		1	Pin - Governor push
25		2	Weight - Governor
26		1	Body - Governor
27		1	Retainer - Pin
28	S014490	1	Bearing - Ball
29	C089794	1	Washer - Tension
30	C113786	2	Shim - Motor
31	C089790	1	End plate - Upper
32	Z8770462	1	Rotor complete (Includes item No.33, 34 & 35)
33	C089779	1	Sleeve - Rotor
34		1	Body - Rotor
35	C092050	4	Blade - Rotor
36	C113797	1	Shaft - Rotor
37	P056138	1	Pin - Roll (.156" x 9/16" Lg.)
38	C092047	1	Liner - Motor
39	C088617	1	Pin - Roll (.156" x 1" Lg.)
40	C113795	1	Plate - Lower end
41	S039951	1	Bearing ball
42		1	Housing - motor
43	C035390	1	Plug - Pipe (1/8")
44	P070423	4	Screw cap
45	C011005	4	Lock washer
46	CA087468	2	O Ring
47	C113792	2	Seal - Shaft
48	C113783	1	Plate - Wear (Upper)
49	C113793	4	Screw - Flat head
50	C113790	1	Sleeve - Impeller
51	F814673	1	Impeller - Pump
52	C113785	1	Spacer (Retaining)
53	C113788	1	Bolt - Hex. (Long lok) (5/16" - 18 x 5/8")
54	F814672	1	Plate - Wear (Lower)
55	C115755	x	Shim (Wear plate) (.005")
56	F814688	x	Shim (Wear plate) (.003")
57		1	Impeller housing complete (Includes item No. 58 & 59)
58		1	Housing - Pump
59	C113794	1	Screen - Sump
60	R137579	1	Nipple - Outlet
61	C085347	1	Handle - Pump
62	R137578	1	Pipe - Exhaust (1" NPT 1" BSP)
63	S038723	1	Pipe - Exhaust (NPTF)



2005-09
No. 9800 0525 01

© Copyright
Stockholm, Sweden

