



Spare parts list

Oil Flow Dividers

OFD 5, OFD 8





2008-06

No. 3392 5159 01

© Copyright Chicago Pneumatic Construction Tools
STOCKHOLM • SWEDEN



Introduction

Welcome! Protect your investment in the world's finest hydraulic tools. Use genuine CP replacement parts.

The purchase of replacement parts for your CP tools deserves the same good judgment that resulted in the purchase of the tools themselves. Each genuine CP part is made from carefully selected and inspected material, subjected to sophisticated machinery and finishing processes and heat-treated to produce just the right combination of hardness, ductility and impact resistance for its intended use. Each part is identical to, and made concurrently with, parts used in production tools.

The use of parts other than genuine CP replacement parts can lead to substandard performance, early failure, possible damage of other parts and, in some instances, unsafe conditions.

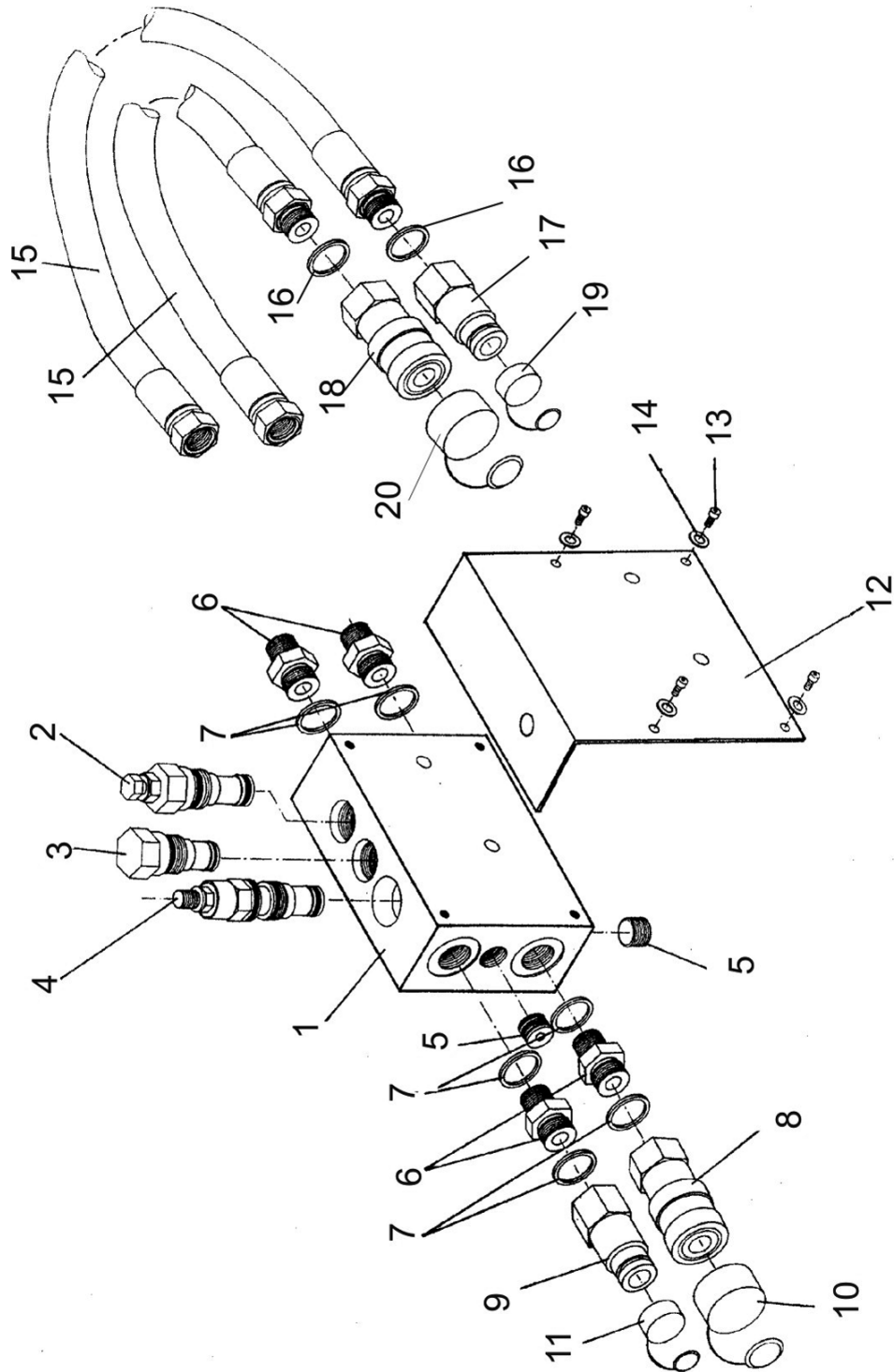
Use only authorized parts. Any damage or malfunction caused by unauthorized parts will not be covered by the Warranty or Product Liability.

Any machine modification not approved by Chicago Pneumatics may result in serious injuries to yourself or others.

To reduce the risk of injury, read and understand the relevant safety and operating instructions before operating the machine.

Before undertaking any maintenance or changing the working tool on hydraulic machines, always switch off the hydraulic oil supply and bleed the machine by activating the start and stop device. Then disconnect the hydraulic hose from the machine.

The OFD 5 and OFD 8 oil flow dividers are used, when the oil flow from the power source exceeds the oil flow required by the hydraulic machine.



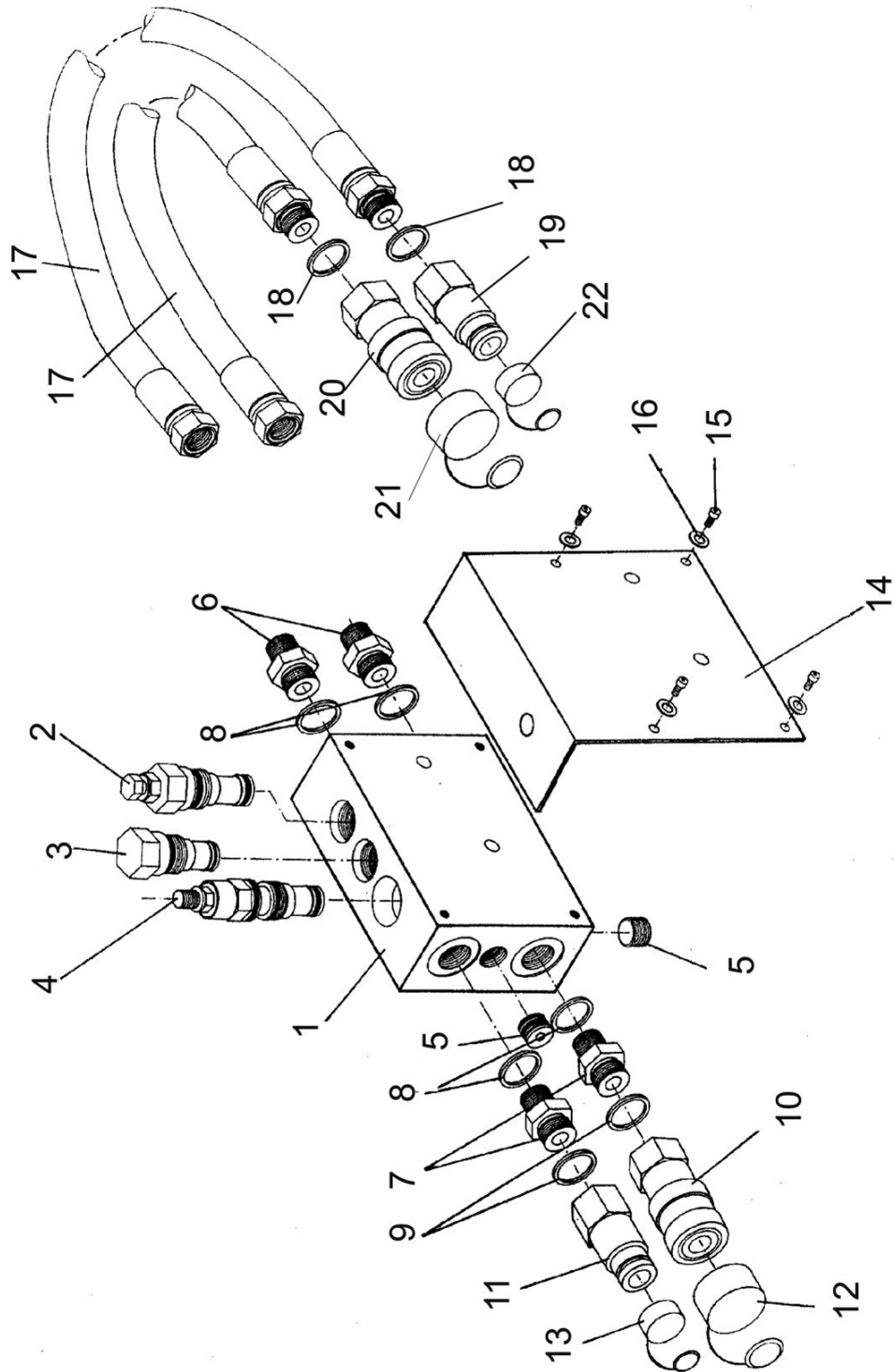
A



OFD 5

No.	Part Number	Quantity	Description
1	3371 8031 14	1	Valve housing
2	3377 0051 72	1	Pressure relief valve
3	3371 8037 37	1	Check valve
4	3371 8037 38	1	Flow regulating valve
5	3371 8037 36	2	Plug $\frac{3}{8}$ " BSP
6	3371 8057 11	4	Nipple $\frac{1}{2}$ " BSP M - $\frac{1}{2}$ " BSP M
7	3371 8057 14	6	Seal ring Bonded seal $\frac{1}{2}$ " BSP
8	3371 8051 33	1	Quick-release coupling Female $\frac{1}{2}$ " BSP
9	3371 8051 34	1	Quick-release coupling Male $\frac{1}{2}$ " BSP
10	3371 8057 33	1	Protective cap Female
11	3371 8057 32	1	Protective cap Male
12	3371 8031 18	1	Bracket
13	3371 8147 15	4	Screw M6x10
14	3377 0004 24	4	Washer $\varnothing 6$
-	3371 8010 83		Connection hose, complete Incl. fig. No. 15-20
15	3371 8030 50	2	- Hose 0.4 m $\frac{1}{2}$ "
16	3371 8057 14	2	- Seal ring Bonded seal $\frac{1}{2}$ " BSP
17	3371 8051 34	1	- Quick-release coupling Male $\frac{1}{2}$ " BSP
18	3371 8051 33	1	- Quick-release coupling Female $\frac{1}{2}$ " BSP
19	3371 8057 32	1	- Protective cap Male
20	3371 8057 33	1	- Protective cap Female

A



B



OFD 8

No.	Part Number	Quantity	Description
1	3371 8031 16	1	Valve housing
2	3371 8037 47	1	Pressure relief valve
3	3371 8037 46	1	Check valve
4	3371 8037 45	1	Flow regulating valve
5	3371 8037 36	2	Plug $\frac{3}{8}$ " BSP
6	3371 8037 44	2	Nipple $\frac{3}{4}$ " BSP M - $\frac{3}{4}$ " BSP M
7	3371 8037 18	2	Nipple $\frac{3}{4}$ " BSP M - $\frac{1}{2}$ " BSP M
8	3371 8137 05	4	Seal ring Bonded seal $\frac{3}{4}$ " BSP
9	3371 8057 14	2	Seal ring Bonded seal $\frac{1}{2}$ " BSP
10	3371 8051 33	1	Quick-release coupling Female $\frac{1}{2}$ " BSP
11	3371 8051 34	1	Quick-release coupling Male $\frac{1}{2}$ " BSP
12	3371 8057 33	1	Protective cap Female
13	3371 8057 32	1	Protective cap Male
14	3371 8031 17	1	Bracket
15	3371 8147 15	4	Screw M6x10
16	3377 0004 24	4	Washer $\varnothing 6$
-	3371 8011 65		Connection hose, complete Incl. fig. No. 17-22
17	3371 8030 60	2	- Hose 0.4 m $\frac{3}{4}$ "
18	3371 8137 05	2	- Seal ring Bonded seal $\frac{3}{4}$ " BSP
19	3371 8051 48	1	- Quick-release coupling Male $\frac{3}{4}$ " BSP
20	3371 8051 47	1	- Quick-release coupling Female $\frac{3}{4}$ " BSP
21	3371 8057 35	1	- Protective cap Female
22	3371 8057 36	1	- Protective cap Male



2008-06

No. 3392 5159 01

© Copyright Chicago Pneumatic Construction Tools
STOCKHOLM • SWEDEN

Chicago Pneumatic Construction Tools